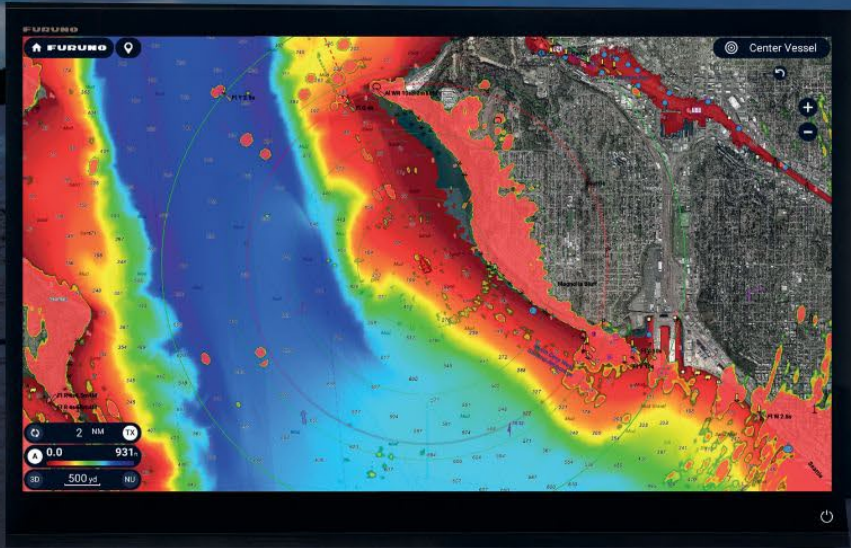


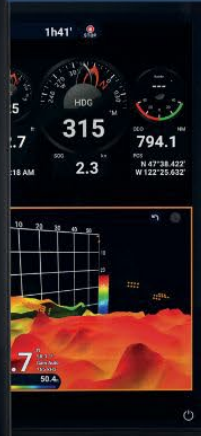
SALES BULLETIN

Number of Pages: 24

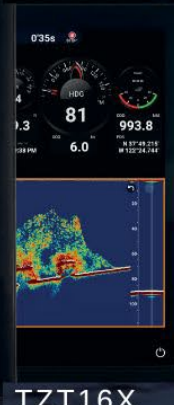
Date: February 20, 2025



TZT24X



TZT22X



TZT16X



TZT13X

TZT10X



TZTBBX



New Software Version 25.11

1. More Integration
 - 1.1. Sonar Integration with CSH-10
 - 1.2. Suzuki Engine Display
 - 1.3. NMEA 2000 Alert PGNs
 - 1.4. NavNet Command Center – New Third-Party Partners
2. Refined Visual Impression
 - 2.1. New Startup and Welcome Screens
 - 2.2. Larger Data Box and Icons
 - 2.3. Larger Depth and Temperature Indicators
3. Home
 - 3.1. New Design with Versatile Functionality
 - 3.2. Assisting to Create Split Screens
 - 3.3. Power Off via Home – TZTBBX Only
 - 3.4. Independent Home Tiles
4. Plotter
 - 4.1. Versatile Slider Bar Options
 - 4.2. Deep Blue Presentation for Depth
 - 4.3. Adjustable Symbols and Texts on Charts
 - 4.4. Optimized Contextual Menu Orders
5. Radar
 - 5.1. Versatile Slider Bar Options
 - 5.2. Distance Markers
 - 5.3. Risk Visualizer Icon
6. Points and Routes
 - 6.1. Point Filter
 - 6.2. Shortcut to Points List by Gesture
 - 6.3. Compass Indicator
 - 6.4. Waypoint Centering for Route Creation
 - 6.5. Navigation Notice for NAVpilot
7. Enhanced AI Routing
8. TZ MAPS
 - 8.1. Dynamic Mooring
 - 8.2. Enhanced Visibility on Land – Sunlight
 - 8.3. Color Mode Selectable via Layer
 - 8.4. Direct Feedback to Mapmedia
9. PBG
10. Fish Finder
 - 10.1. New Transducers
11. CHIRP Side Scan
 - 11.1. Auto Gain
 - 11.2. New Echo Colors
 - 11.3. Others
12. Instrument and Data Box
 - 12.1. Refined Instrument Design
 - 12.2. Separator and Spacer
 - 12.3. Pinning Favorite Page – Instrument
 - 12.4. Others
13. TZ Weather
14. Enhanced Layer Menu
15. Enhanced Search Functions
 - 15.1. Smart Search
 - 15.2. Menu Search
16. Details of Software Versions
17. Others

1. More Integration

1.1. Sonar Integration with CSH-10

The **New 360-degree Omni Scanning Sonar CSH-10** can be networked with the NavNet TZtouchXL series MFDs.

On CSH-10

✚ Installation setup is required on the CSH-10.

On NavNet TZtouchXL series MFDs (after setup on CSH-10)

- ✚ Sonar page
- ✚ Overlay on charts
- ✚ Range, Gain, Tilt, Event Mark operation, etc.
- ✚ User menu settings

[See CSH10/TZTXL interface bulletin for details.](#)

CSH-10 – Overview

- ✚ Improved target detection
- ✚ 83.5 kHz (±2 kHz selectable)
- ✚ Built-in motion sensor
- ✚ Tilt: -5 to +60°
- ✚ 400- or 600-mm stroke
- ✚ Faster raise/lower speed:
7 sec (400 mm) or 10 sec. (600 mm)
- ✚ Max. 20kn (18kn for raise/lower operation)
- ✚ F1 to F10 function keys
- ✚ SXGA (1280×1024) via HDMI
- ✚ Max. range scale 2000 m
- ✚ 24 VDC



1.2. Suzuki Engine Display

The NavNet TZtouchXL series MFDs support the Suzuki engine display mode, like the Suzuki SMD7/9/12/16 models. With the same interconnection and engine configuration as the SM7/9/12/16, the TZT10X/13X/16X/22X/24X/BBX can be used as Suzuki engine gauges.

[See Suzuki bulletin for more information.](#)

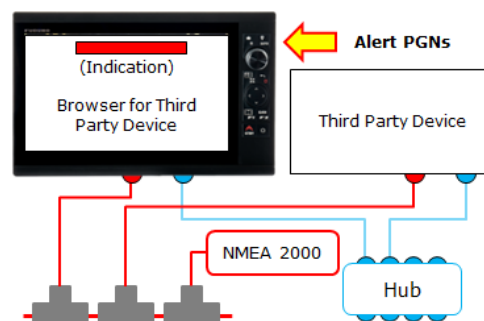


1.3. NMEA 2000 Alert PGNs

NMEA 2000 alert PGNs are supported.

- ✚ PGN: 126983 - Alert (Input)
- ✚ PGN: 126984 - Alert Response (Output)
- ✚ PGN: 126985 - Alert Text (Input)

When third-party devices are connected to the NavNet Command Center via HTML, they generate PGNs for alerts. Now NavNet TZtouchXL series MFDs can show these alerts on the alarm bar at the top of the screen. Details of each alert can be checked on the Alarm List. Alert indications can be turned off in [Settings] - [Alarms] - [NMEA 2000 Alert].



1.4. NavNet Command Center – New Third-Party Partners

The following third-party partner is added to the network via HTML. Check out the NavNet Command Center bulletin for a full listing of HTML5 Third Party Partners.

Company	System	URL
VisuWorld	Monitoring system VishShip	https://visuworld.eu/en/home-en/ https://visuworld.eu/en/visuship-en/

2. Refined Visual Impression

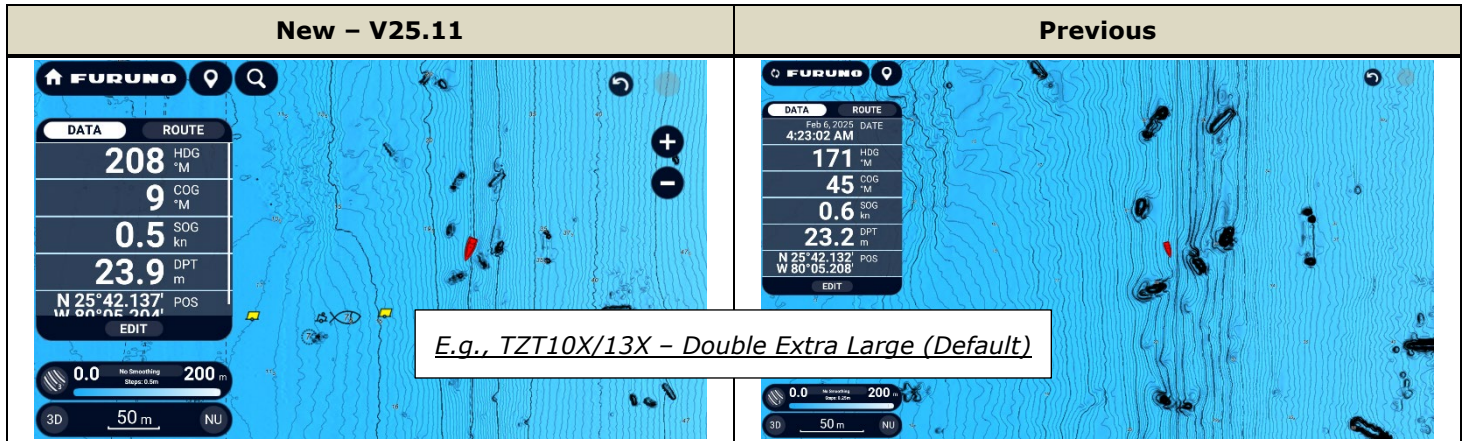
2.1. New Startup and Welcome Screens

The background design at startup is refined to have the same deep blue color as the icons and setting pages. Once the application starts, the Welcome Screen shows your My TIMEZERO nickname if the display is logged in. In the following example, the TZT16X welcomes the user named "Furuno."

New – V25.11	Previous
	
	

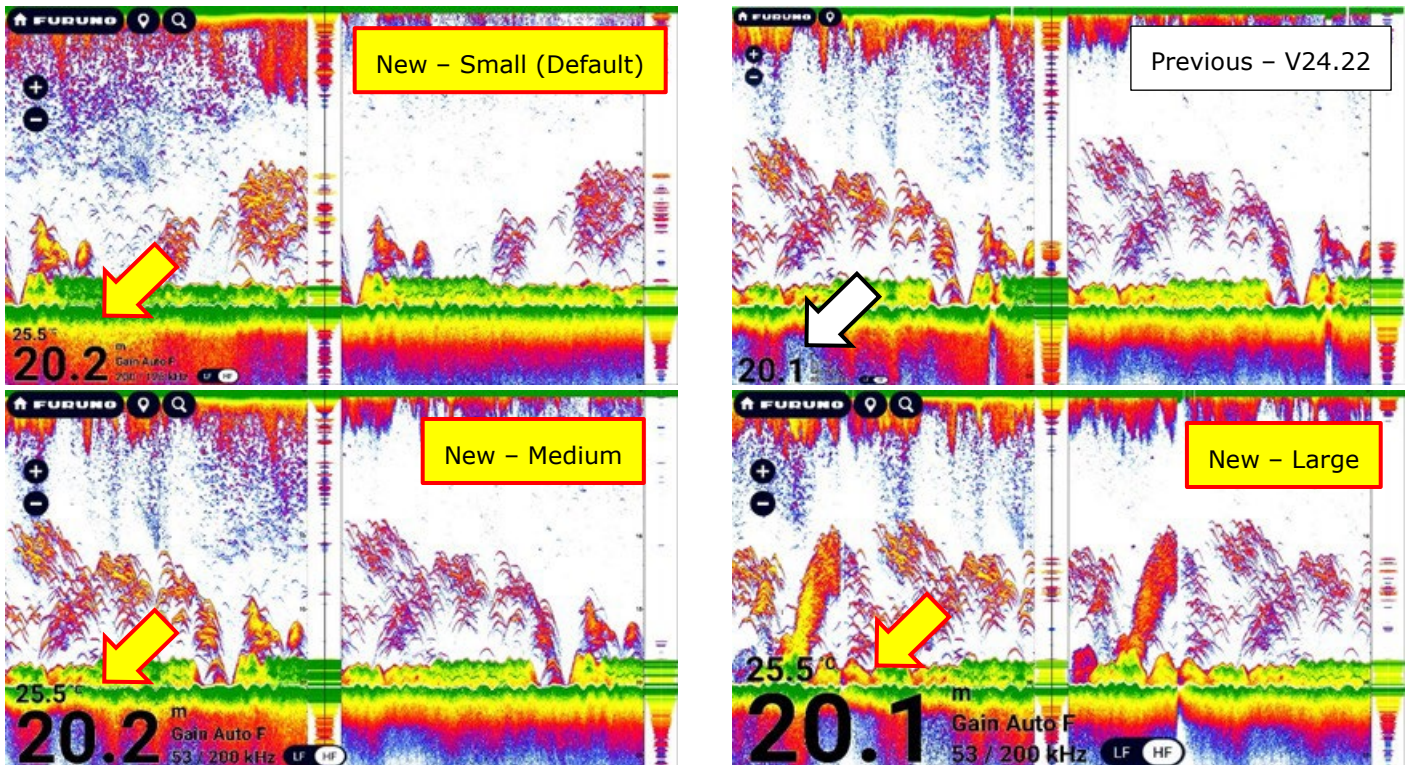
2.2. Larger Data Box and Icons

The different size selections in the Scale and Layout menu were reconfigured. All size selections were made larger. This change vastly improved the font and object size. The change is most notable on the smaller models such as the TZT10X/13X, as shown in the following screenshots.



2.3. Larger Depth and Temperature Indicators

The default size of the depth indication on **Fish Finder**, **CHIRP Side Scan**, and **DFF-3D** screens is enlarged. In addition, the size indication in full-screen mode can be adjusted to much larger sizes: Access [Settings] – [Fish Finder] – [User Settings] – [Digital Depth Size] and set [Small] (default), [Medium], or [Large]. The setting in this menu applies to the Fish Finder, CHIRP Side Scan, and DFF-3D. [Medium] and [Large] settings apply to full-screen mode only. Temperature indication was also improved. Size was increased and moved to the top of the digital depth display.



The following screenshots compare the new default [Small] setting with the previous indications. You can see that even the small setting offers larger readouts.

Screen	New - V25.11	Previous
Fish Finder		
CHIRP Side Scan		
DFF-3D		

3. Home

3.1. New Design with Versatile Functionality



- (1) The maximum quantity of tiles was increased from 16 to **32**.
- (2) A new icon to create a new page is added at the bottom right.
- (3) Edit icons are enlarged.
- (4) The status indicator has additional icons to set each sensor to TX or STBY from Home: Radar, CHIRP Side Scan, DFF-3D, NAVpilot, and Sonar.
- (5) New icons for the CSH-10 Omni Sonar, new TZ Weather, and SiriusXM™ Weather (North America only).



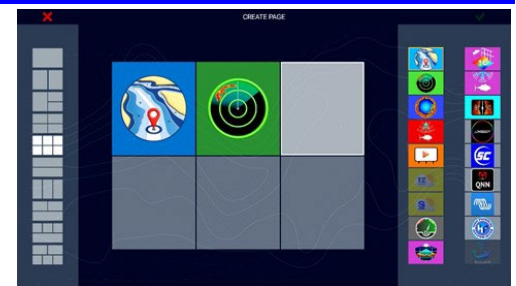
Note:

The icon for the video encoder screen is still available.



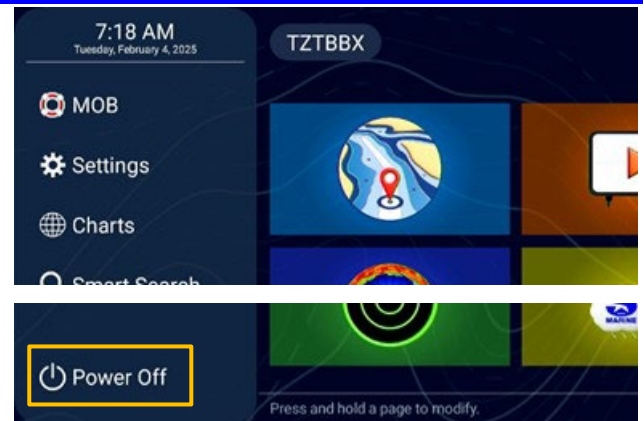
3.2. Assisting to Create Split Screens

For a new page, you no longer need to drag a screen type icon to the page builder area, just tap the desired icon. In the example on the right of a 6-split screen, you may tap each required icon one by one to fill each split screen. The page builder will automatically go to and highlight the next box to be filled. Note you can still drag an icon to a required screen position.



3.3. Power Off via Home – TZTBBX Only

The TZTBBX can be turned off from the Home page – [**Power Off**] at the bottom left. The TZTBBX can now be turned off via the Home page, instead of the ship’s mains. Tip: You can also set in the menu, to have the TZTBBX turn on with ship’s mains.



3.4. Independent Home Tiles

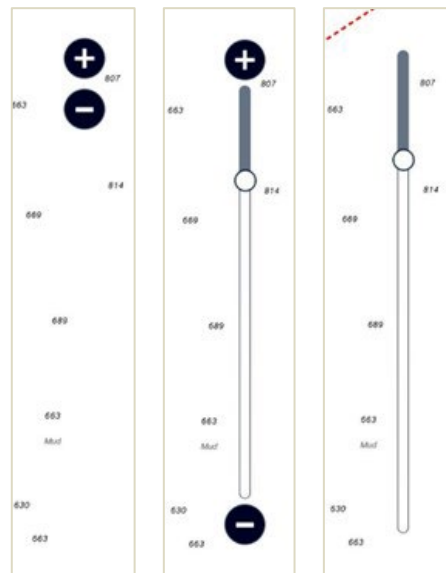
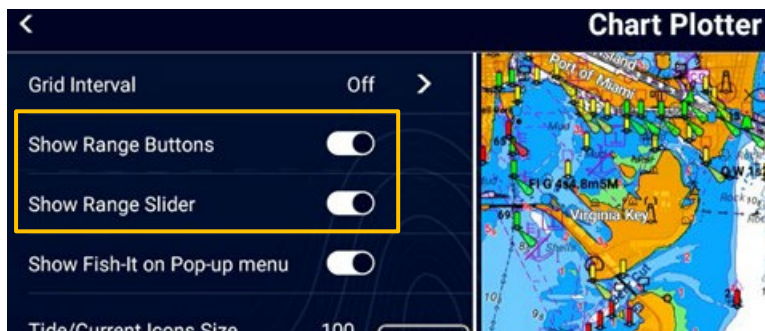
Home tiles are **NOT** shared among MFDs in the network. Previously, Home tiles were always shared across the Network. Primarily used screen modes were sometimes different between MFDs (stations). Now, Home tiles are set up independently. You can use this feature to customize/limit the number of home screen icons.



4. Plotter

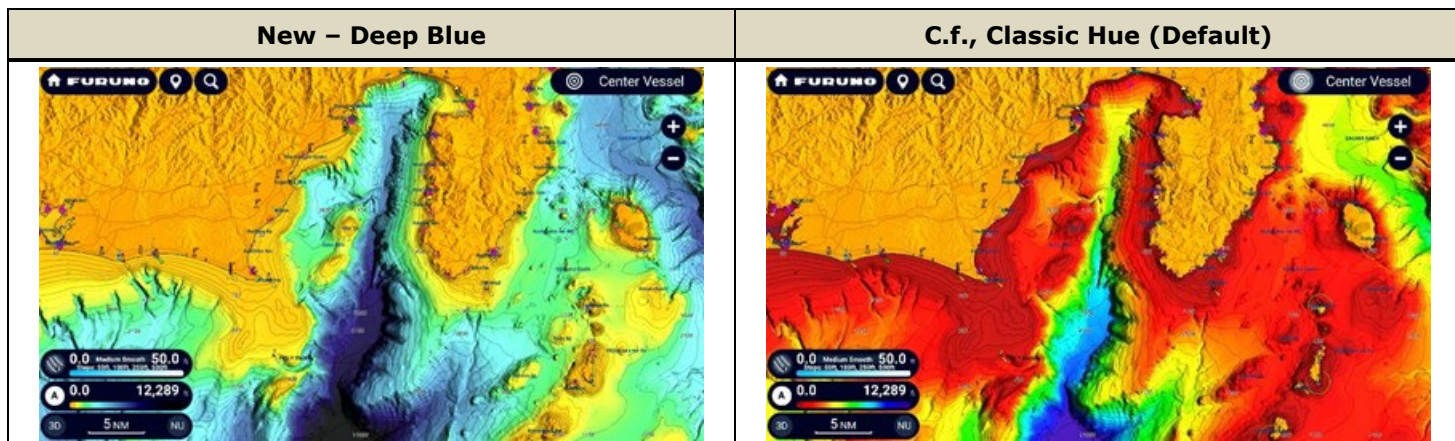
4.1. Versatile Slider Bar Options

A range slider bar is added. For more versatile operations, an option to show only the bar without the [+] and [-] range buttons is also available. By default, only the range buttons are displayed. For standard use, a slider bar can be displayed between the buttons. If only dynamic zoom in/out functionality is required, the slider bar can be used without the range buttons. These independent settings are available in [Settings] – [Chart Plotter] – [Show Range Buttons] and [Show Range Slider].



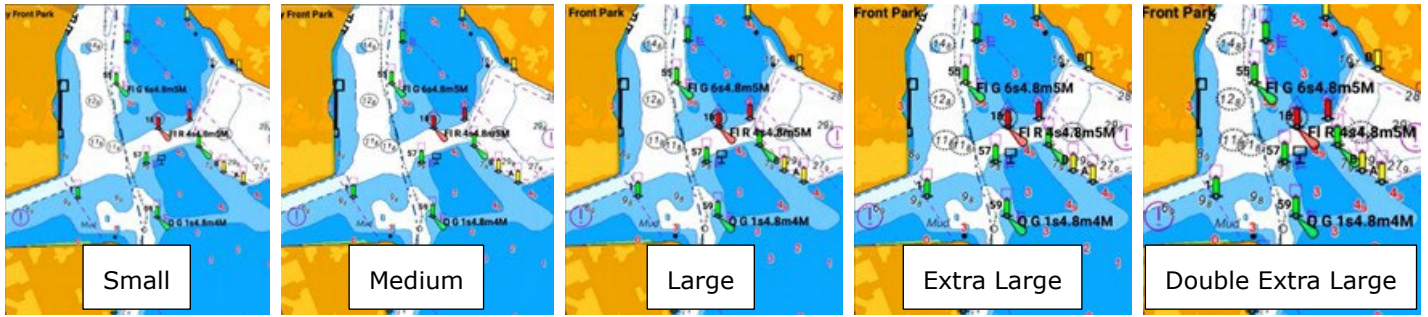
4.2. Deep Blue Presentation for Depth

Deep Blue, a new option in Depth Shading, helps to identify areas where the waters suddenly change from shallow to deep. In the example below, the area consists of a continental shelf along the coast and a trench in the center. While the continental shelf is presented in medium colors, the trench in deeper areas is shown in deep blue color graduations.



4.3. Adjustable Symbols and Texts on Charts

The size of symbols, chart objects and text on charts can be adjusted in [Settings] – [General] – [This Display] – [Plotter Objects Size] – [Small], [Medium], [Large], [Extra Large], or [Double Extra Large].



4.4. Optimized Contextual Menu Orders

The order of setting items in the contextual menu is optimized to show more frequently accessed items on top.

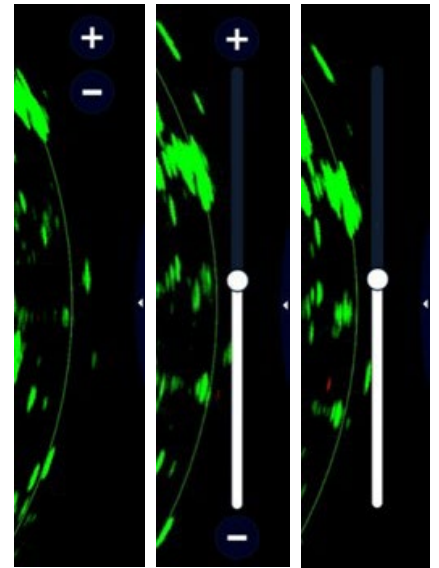
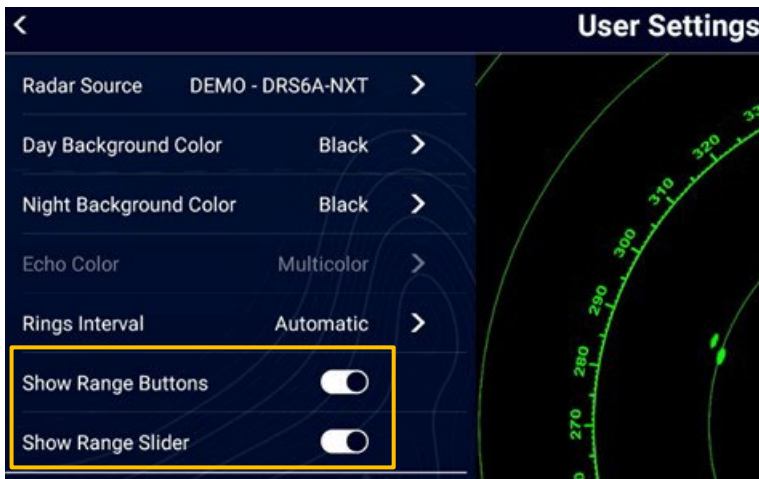
New – V25.11	Previous

5. Radar

5.1. Versatile Slider Bar Options

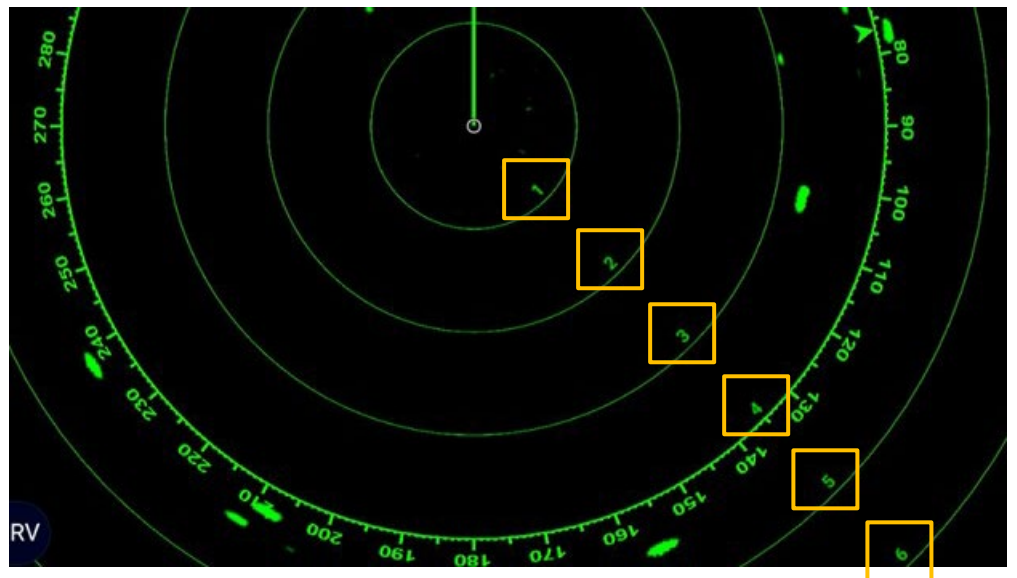
A range slider bar is added. For more versatile operations, an option to show only the bar without the [+] and [-] range buttons is also available, like in the Plotter. By default, only the range buttons are available. For conventional operation, a slider bar may be shown between the buttons. When only dynamic zoom in/out operation is needed, only the slider bar without the range buttons may be deployed. These versatile settings are available in [Settings] – [Radar] – [User Settings] – [Show Radar Range Button] and

[Show Range Slider].



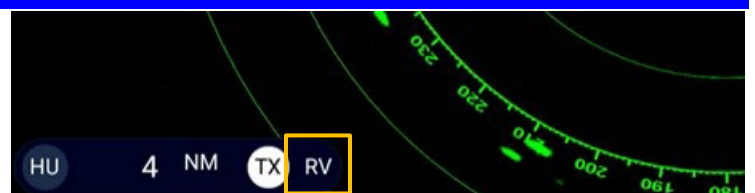
5.2. Distance Markers

Distance markers are deployed at each range ring, which quickly helps identify the distance of targets without opening a contextual menu. In the following example, the Radar range scale is set to 4 NM with three rings inside and two outside the 4 NM range. A total of 6 rings are marked with distances.



5.3. Risk Visualizer Icon

While Risk Visualizer mode is turned on, a dedicated [RV] icon is displayed on the screen.

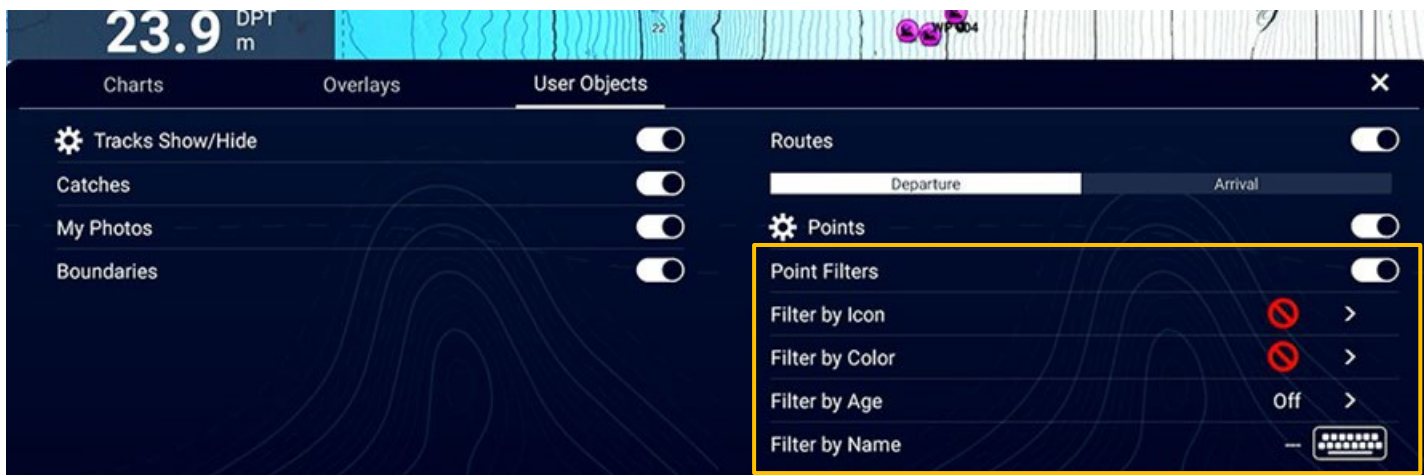


6. Points and Routes

6.1. Point Filter

Various points entered on the Plotter and Radar can be **filtered by icon, color, age, and name**. Depending on the purposes such, as fishing and navigation, the required points can be displayed.

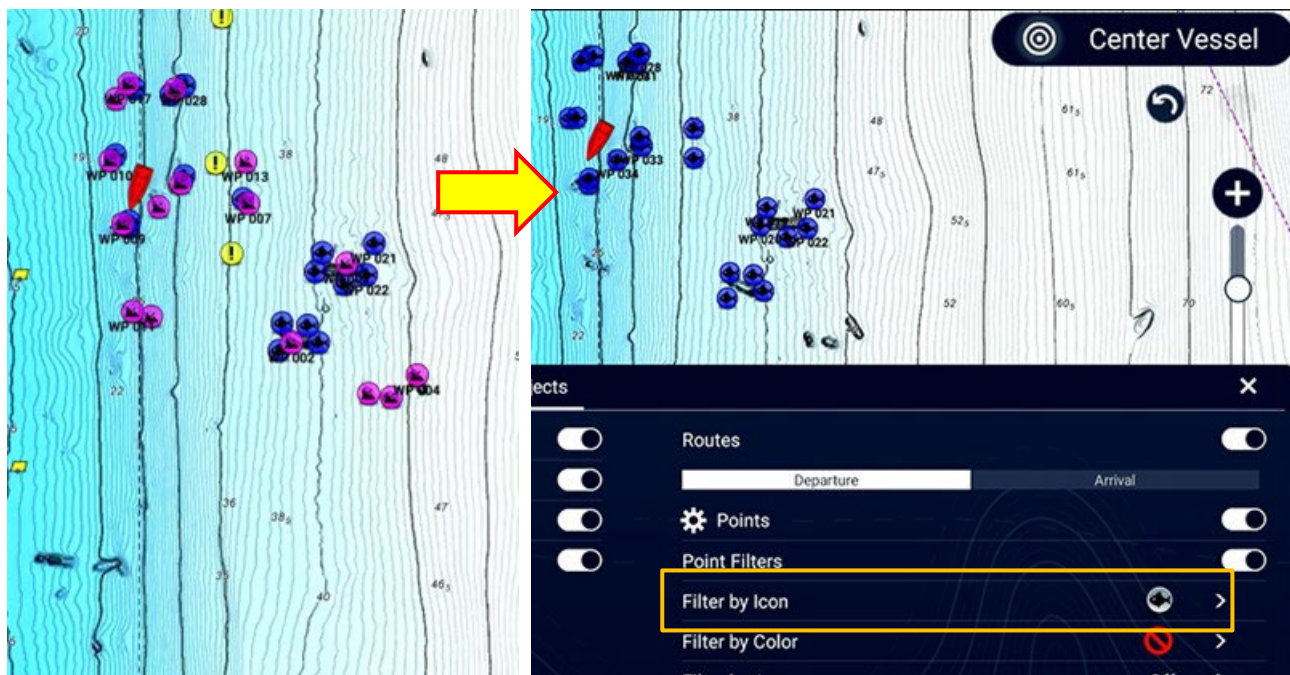
Plotter and Radar: Access Layer menu – [User Objects] tab – [**Point Filters**] – [**On**] and filter by the required options.



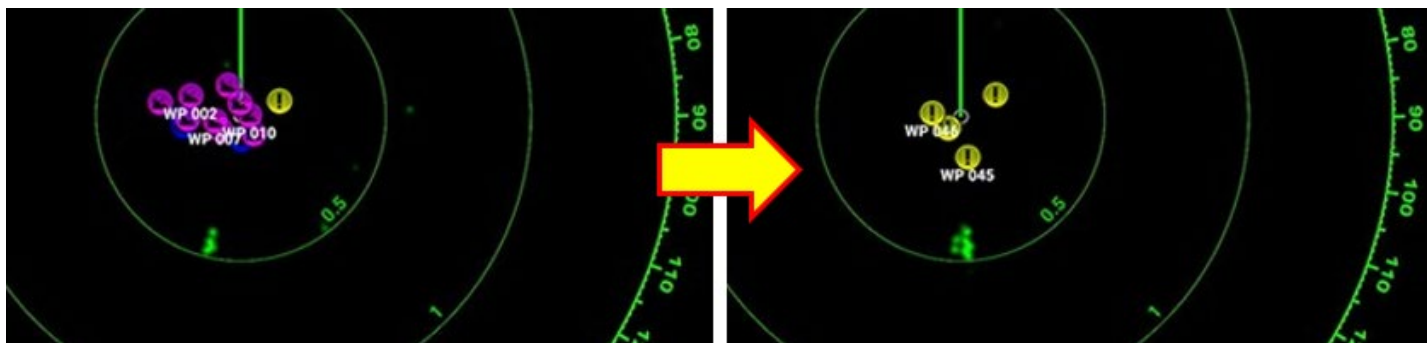
In the following example, many points are displayed while going to a fishing location.

- ⚠ Areas with dangerous underwater structures are marked with the [!] icon.
- ⚠ Wrecks are marked with the Wreck icon.
- ⚠ Spots where fish were hooked are marked with Fish icons: Single-fish, Double-fish, or Triple-fish.

Plotter – Single-fish icons are filtered to focus on areas where fish were hooked in the past.

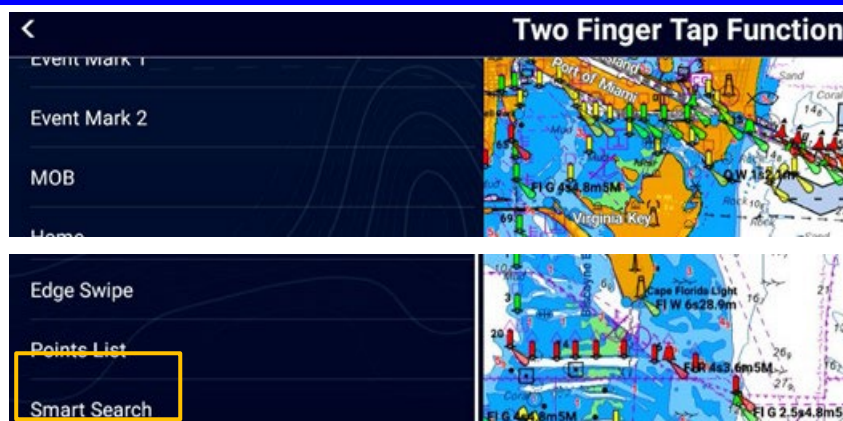


Radar – When all the points are shown on the screen, echoes can be masked by these points. In this example, [!] icons are filtered for caution spots to help recognize the caution areas not identified with Radar echoes.



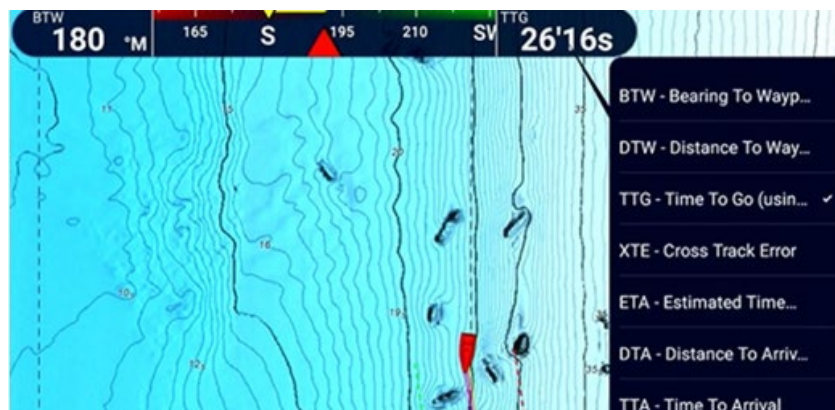
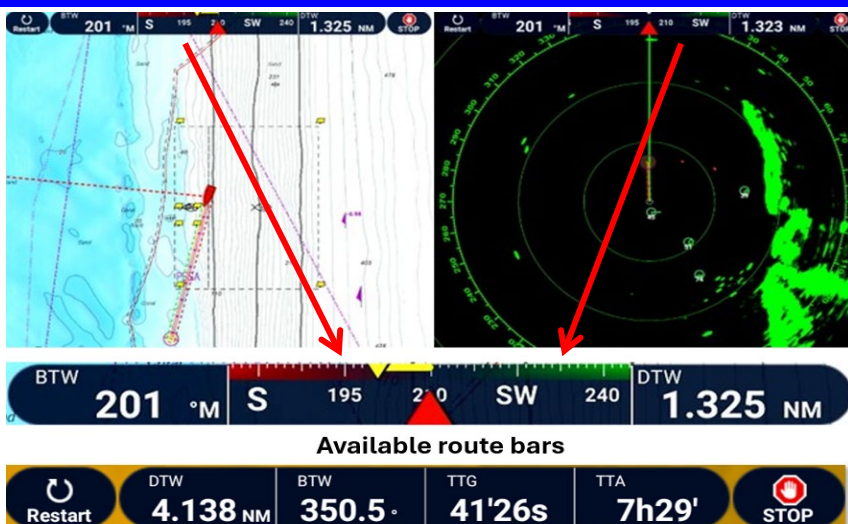
6.2. Shortcut to Points List by Gesture

Access to the Points List is available with a two-finger tap or a two-finger long tap. When entered points are frequently reviewed in the Points List, quick access to the Points List can be assigned in [Settings] – [General] – [This Display] – [Two Finger Tap Function] or [Two Finger Long Tap Function] – [**Points List**]. You can also set one of the Event Icon functions as a shortcut to the Points List.



6.3. Compass Indicator

When a route or waypoint is active, a new compass bar can be displayed on the Plotter and Radar screens. When steering manually, the compass indicator, along with the yellow deviation marker, helps you track how far your ship has strayed from the set course. To revert between the two route bar types, just tap in the middle of the compass or the route bar.

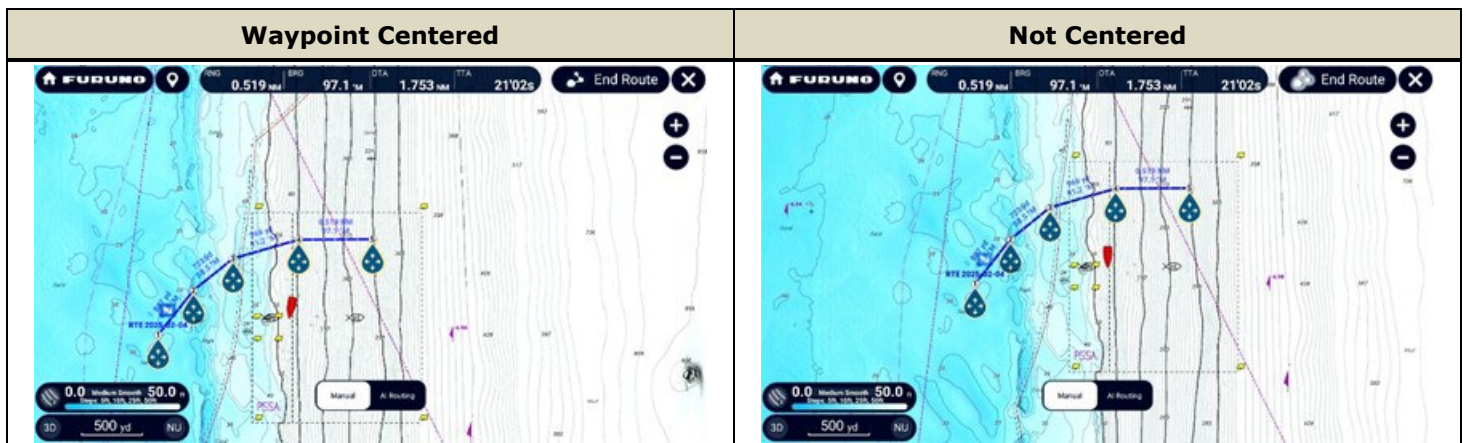
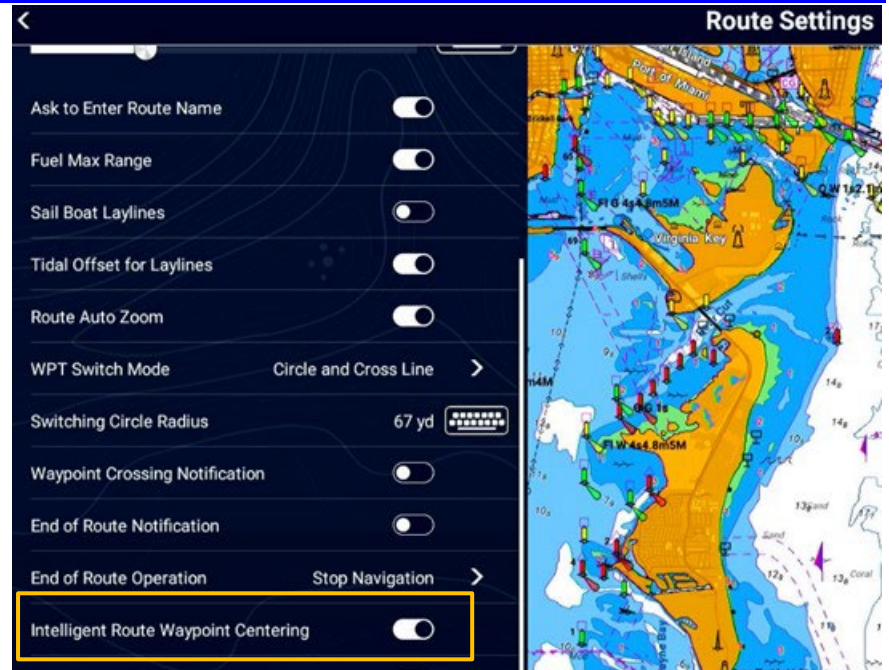


Also, the data in the Data boxes on each end of the compass bar can be customized. Just tap in the box to bring up available data selections.

6.4. Waypoint Centering for Route Creation

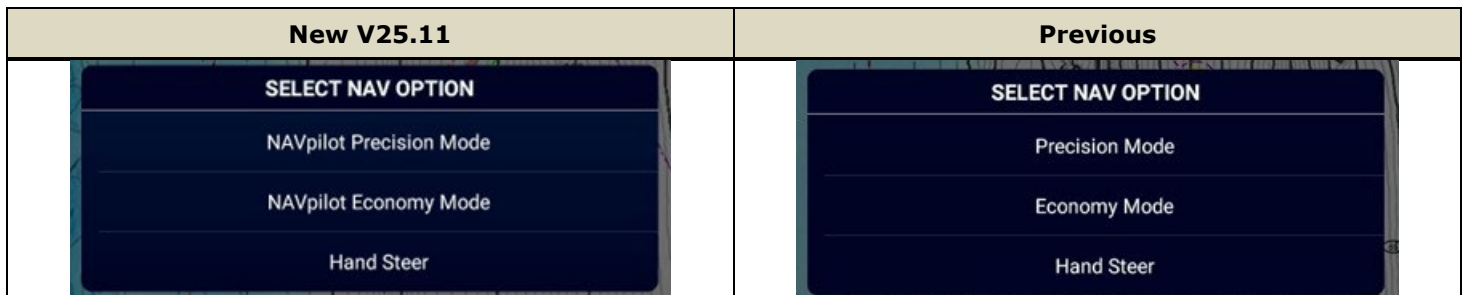
When a manual route is created, the chart screen can automatically be shifted to show a new waypoint in the center of the screen. While you make a long route, you no longer need to scroll/pan the chart while entering a waypoint.

To activate this function, access [Settings] – [Routes] – [Route Settings] and set [Intelligent Route Waypoint Centering] to [On].

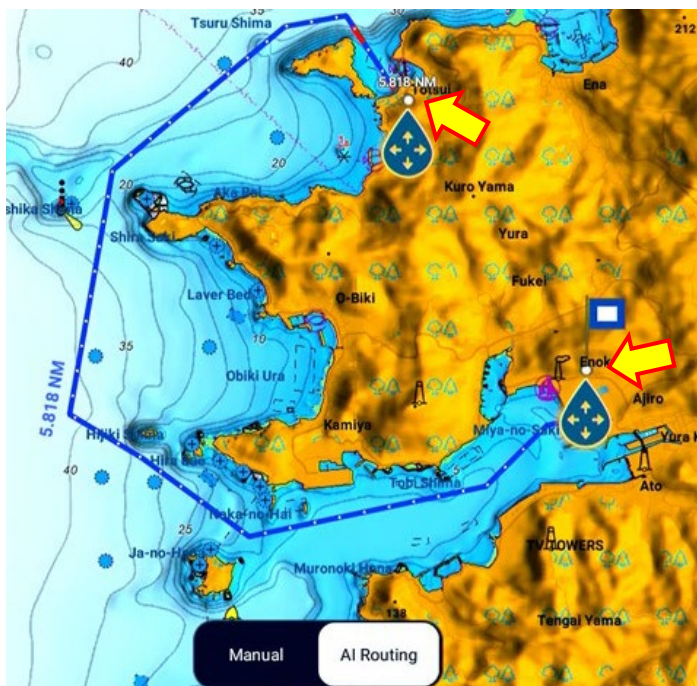


6.5. Navigation Notice for NAVpilot

The description in the message box that appears when activating a route is improved to help users select the most appropriate steering option with the NAVpilot-300/711C (Precision or Economy modes) or by hand.



7. Enhanced AI Routing

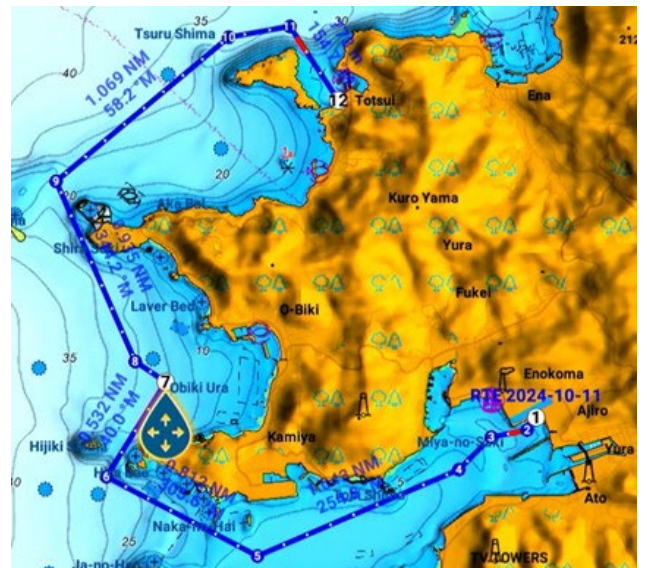


AI Routing has been improved with the following updates.

Start & End on Land

When a route is created between land areas, AI Routing automatically assigns nearby coastal spots on the water as start- and endpoints.

Previously, when land areas were selected as start- and/or endpoints, AI Routing did not work.



Auto Routing Consistently Available

AI Routing still works while editing a created route. Previously, a manual edit of any leg in red was required after automatically creating the route with AI Routing. With the new V25.11, the route will automatically be adjusted while editing waypoints and legs.

Others

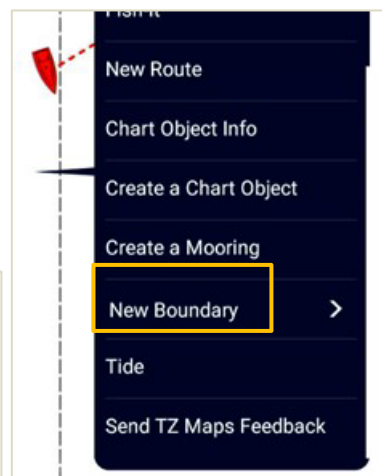
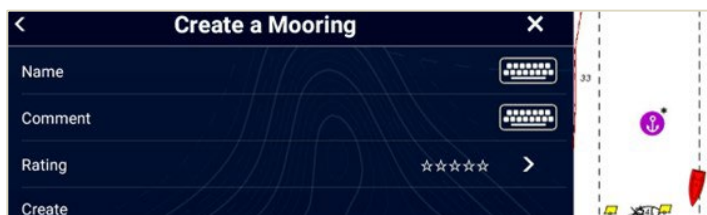
- (1) Red indications for dangerous or caution areas remain active even after ending route creation.
- (2) Safety depths can be set by selecting from a list in [Settings] – [Routes] – [AI Routing] – [Safety Depth]. Previously, entering a specific value was required. Note that the preset value with previous software versions 24.22.2 or earlier will not be transferred after updating to V25.11. Make sure to set the safety depth again after the software update.
- (3) A new setting option is added in [Settings] – [Routes] – [AI Routing] – [**Strict Depth Compliance**] – [ON] or [OFF] (default). With this setting turned on, a route will not be created in shallower water than the depth set as safety depth.
- (4) Searching time for vector charts and crowdsource recommended routes is improved.
- (5) Waypoints are reduced on vector charts and crowdsource recommended routes.
- (6) The [Safety Distance from Land] setting is **removed**.

8. TZ MAPS

8.1. Dynamic Mooring

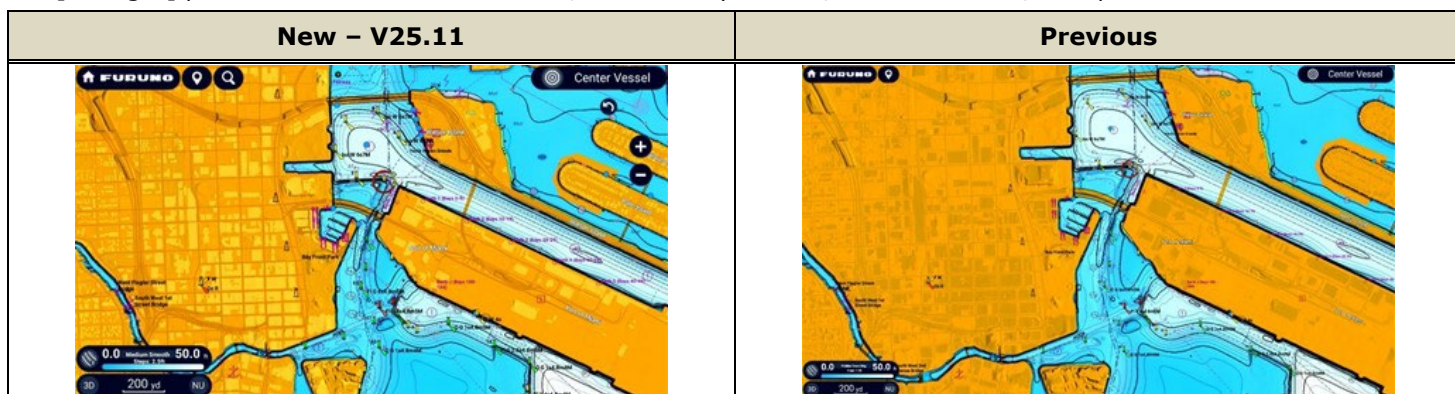
Dynamic Mooring, supported by TZ Navigator, TZ Professional, as well as TZ iBoat, is now available on NavNet TZtouchXL series MFDs. Tap the spot where anchoring is planned so that the wind forecast is graphically displayed. You can also view previously created Dynamic Moorings created by other TZ MAPS community members.

Note: This function is only available with TZ MAPS – TZ Vector charts.



8.2. Enhanced Visibility on Land – Sunlight

In [Sunlight] presentation mode for TZ MAPS, the visibility of land, such as streets, is improved.



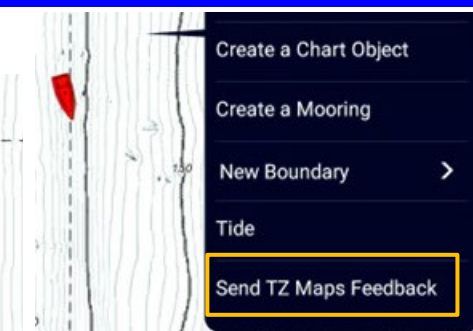
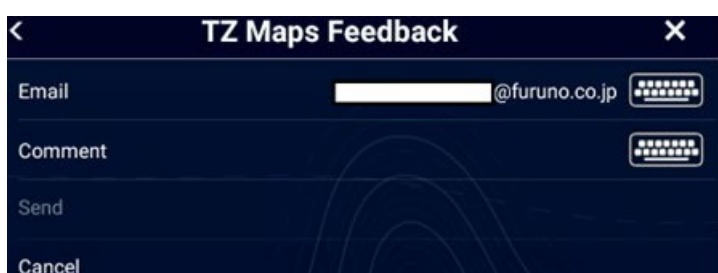
8.3. Color Mode Selectable via Layer

The chart color scheme is selectable on the Layer menu. You can switch from one to the other depending on the navigation purposes, such as fishing or cruising. These graphical icons are also available in [Settings] - [TZ MAPS].



8.4. Direct Feedback to Mapmedia

Feedback on TZ MAPS can be posted directly to Mapmedia via MFDs.



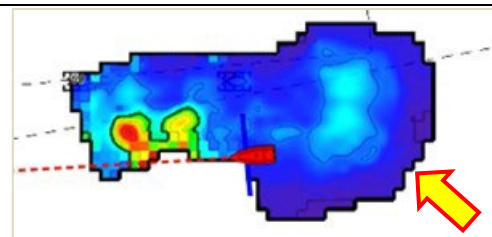
9. PBG

The presentation of PBG (bottom mapping) with the DFF-3D is improved as follows.

New – V25.11	Previous
<ul style="list-style-type: none"> Depth contour lines are NOT synchronized with the settings on TZ BathyVision. The minimum step is 1 m. The step becomes larger at deeper depths. No density level setting is available. 	<ul style="list-style-type: none"> Depth contour lines are synchronized with the settings on TZ BathyVision. The minimum step is 1 m. To adjust the density level, you need to take multiple steps: Switch the chart source to [TZ BathyVision], adjust the depth contour level on [TZ BathyVision], go back to [TZ Vector] and select [3D Data Source] – [DFF-3D] to show PBG.

Notes:

- (1) This presentation is common with the NavNet TZtouch3 series MFDs.
- (2) The edge of the mapping areas is presented with blocks like previous software versions, as shown on the right.



10. Fish Finder

10.1. New Transducers

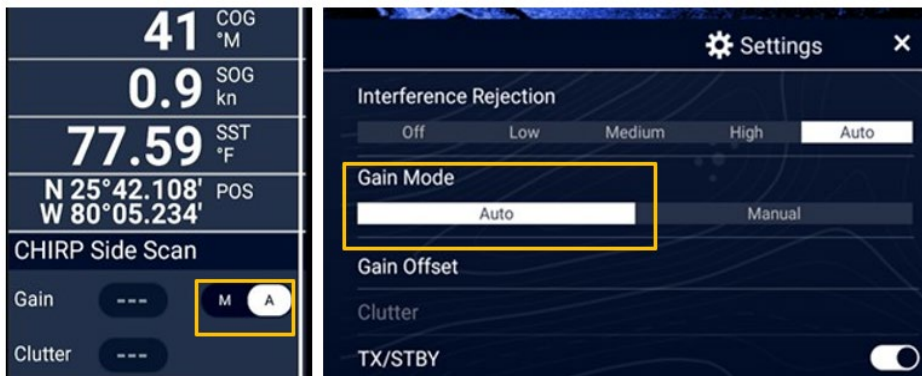
Transducer	TX	Power Rating	Frequency	Beamwidth	Housing	Mounting	ACCU-FISH™ Bottom Disc.
SS175L	CHIRP	1 kW	40-60 kHz	32-21°	Stainless	Thru-hull	N/A
SS175M	CHIRP	1 kW	85-135 kHz	16-11°	Stainless	Thru-hull	N/A
SS175H	CHIRP	1 kW	130-210 kHz	10-6°	Stainless	Thru-hull	N/A
SS175HW	CHIRP	1 kW	150-250 kHz	25°	Stainless	Thru-hull	N/A
M265LH	CHIRP	1 kW	LF: 42-65 kHz HF: 130-210 kHz	LF: 25-16° HF: 10-6°	Plastic	In-hull	N/A
M265LM	CHIRP	1 kW	LF: 42-65 kHz MF: 85-135 kHz	LF: 25-16° MF: 16-11°	Plastic	In-hull	N/A
M285HW	CHIRP	1 kW	150-250 kHz	25°	Plastic	In-hull	N/A
TM260	CW	1 kW	50/200 kHz	19/6°	Urethane	Transom	Available

11. CHIRP Side Scan

11.1. Auto Gain





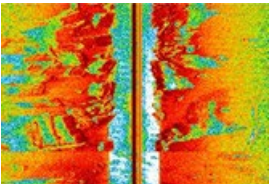
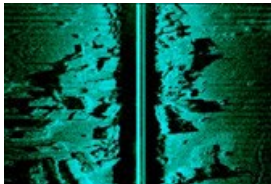
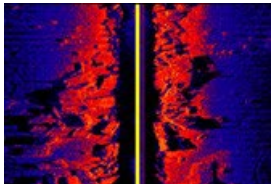
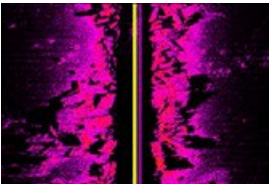
Auto Gain now supported for CHIRP Side Scan.

Referring to underwater conditions, the gain is automatically adjusted. [Gain Mode] can be switched between [Manual] and [Auto] in the Data Box – CHIRP Side Scan control box or the Layer menu.



11.2. New Echo Colors

Four (4) new colors are added to support a variety of navigation and fishing scenes. These colors are selectable in the Layer menu or [Settings] – [CHIRP Side Scan] – [Echo Color].

 Tuna Hunter	 Aqua Marine	 Fury	 Volcano
			

11.3. Others

- (1) The threshold of Manual Gain is optimized to increase the gain and show echoes in thicker colors.
- (2) The default threshold of the Bottom Level is optimized for more successful bottom detection in deep waters.

12. Instrument and Data Box

12.1. Refined Instrument Design



E.g., TZT16X – Instrument Page

New **Modern** design is added (default). The graphic design is selectable between the new [**Modern**] and the conventional [**Legacy**] in [Settings] – [Initial Setup] – [Instruments Setup] – [Graphic Instruments Setup] – [Instruments Theme]. The screenshots below show the designs on the Instrument page (left) and Data Box (right).



New – V25.11	Previous
<p>The background color is fixed to Solid Black, and the instrument color is fixed to Black. The optional Carbon Black background and White instruments menu selections are removed.</p>	

12.2. Separator and Spacer

When many graphical instruments and numerical data boxes are deployed on one screen, they can be visually categorized into several groups by data type. On the Instrument page, white or red separator lines can be drawn on the screen like borders in Excel to recognize the difference in data types. In the Data Box, spacers can be deployed to create space between boxes.

--	--

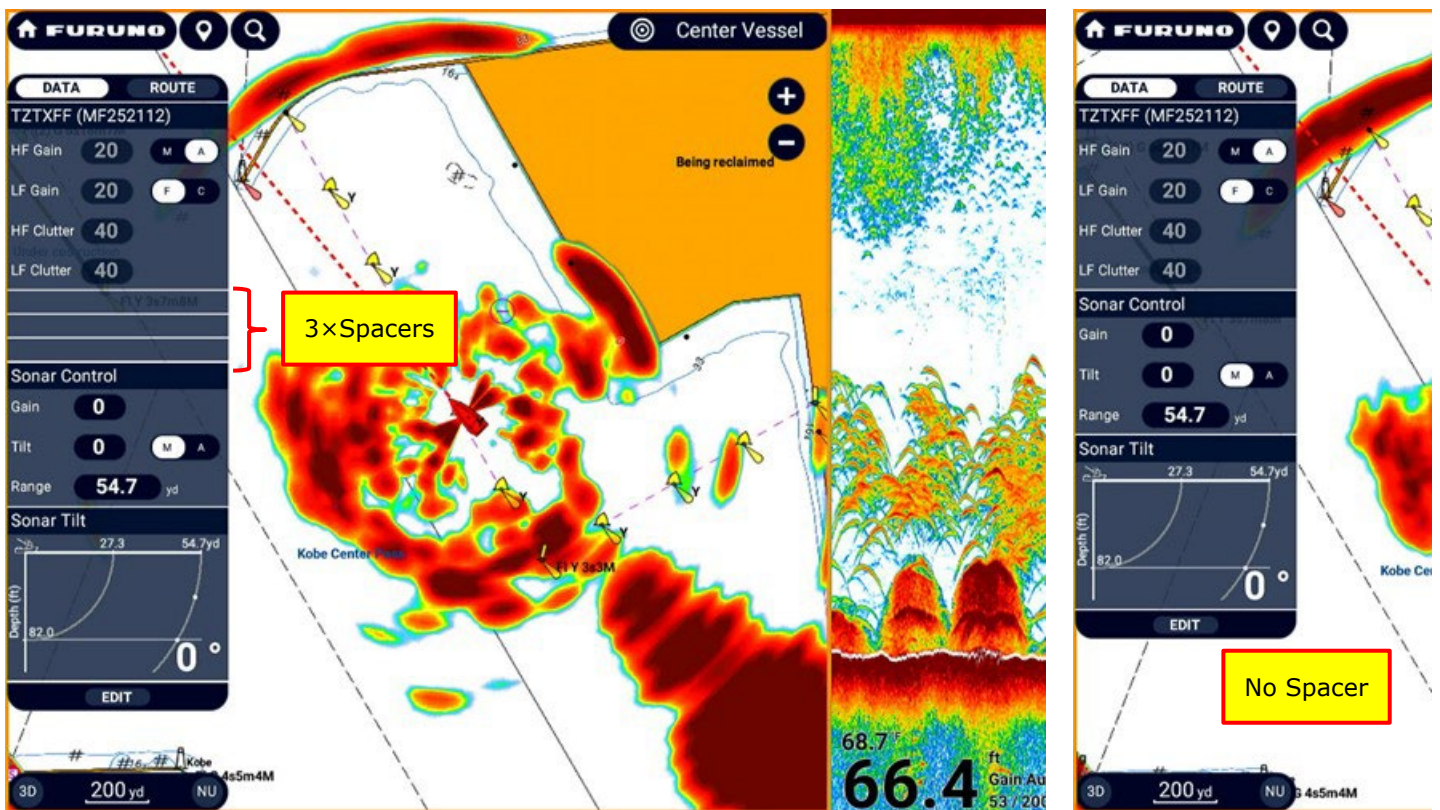
Instrument with Separators

In the following example, the top area with Highway and Autopilot boxes is assigned to steering aids, the center is for engines with numerical data indications, and the bottom shows numerical data for navigation. Two white lines are drawn to separate these three data categories.



Data Box with Spacers

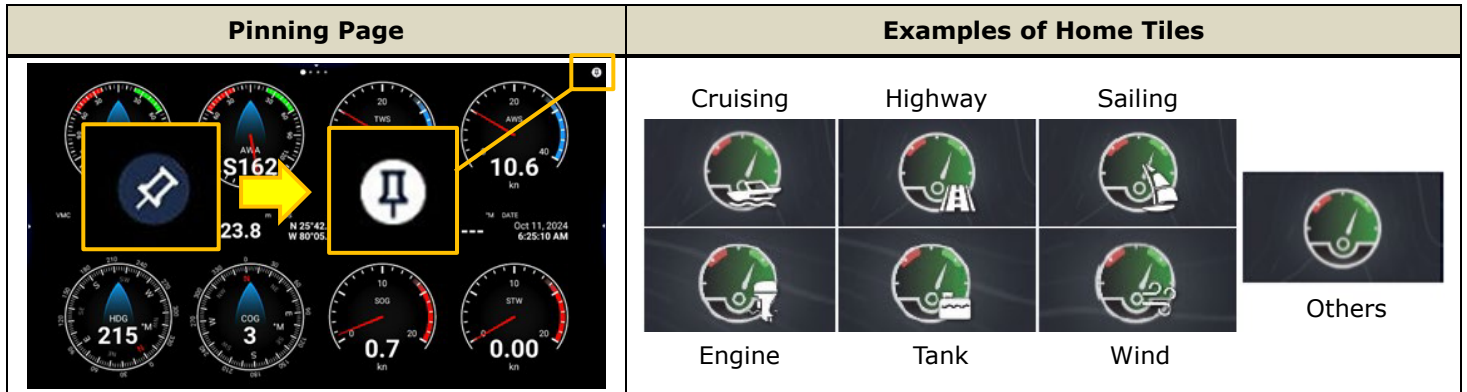
In the following example, Control Boxes of the Fish Finder and CSH-10 are shown in the same Data Box tab. Three spacers in-between help identify the different box types so that users can instantly access the appropriate box.



E.g., - Split Screen with Chart (CSH-10 overlay) and Fish Finder

12.3. Pinning Favorite Page – Instrument

One of the Instrument pages can be pinned. The Home page shows dedicated tiles depending on the pinned page types: [Cruising], [Highway], [Sailing], [Wind], [Tank], [Engine]. Note that pinned pages are **NOT** synchronized with other MFDs in the network.

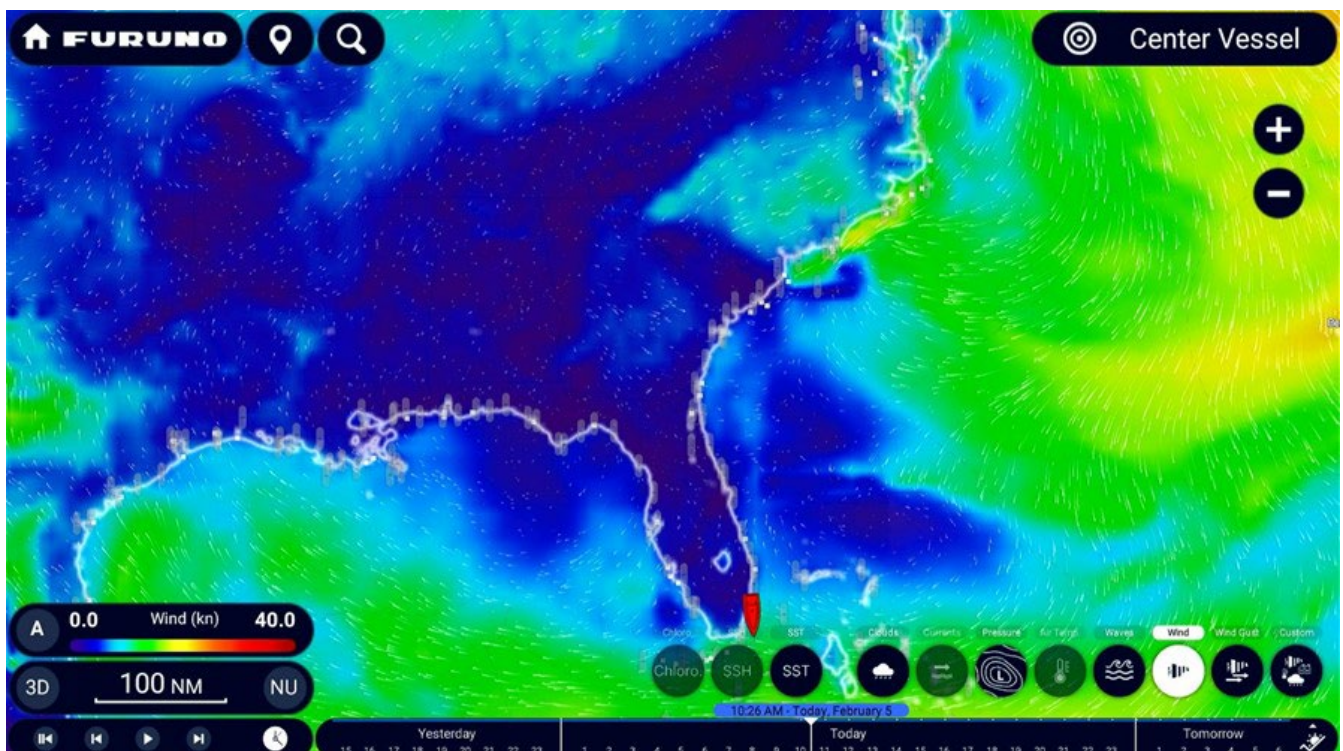


12.4. Others

- (1) Instrument: The Edit menu will not appear with a single tap but now with a long tap only.
- (2) Data Box: The Edit menu will not appear with a long tap. Make sure to tap the [EDIT] icon.

13. TZ Weather

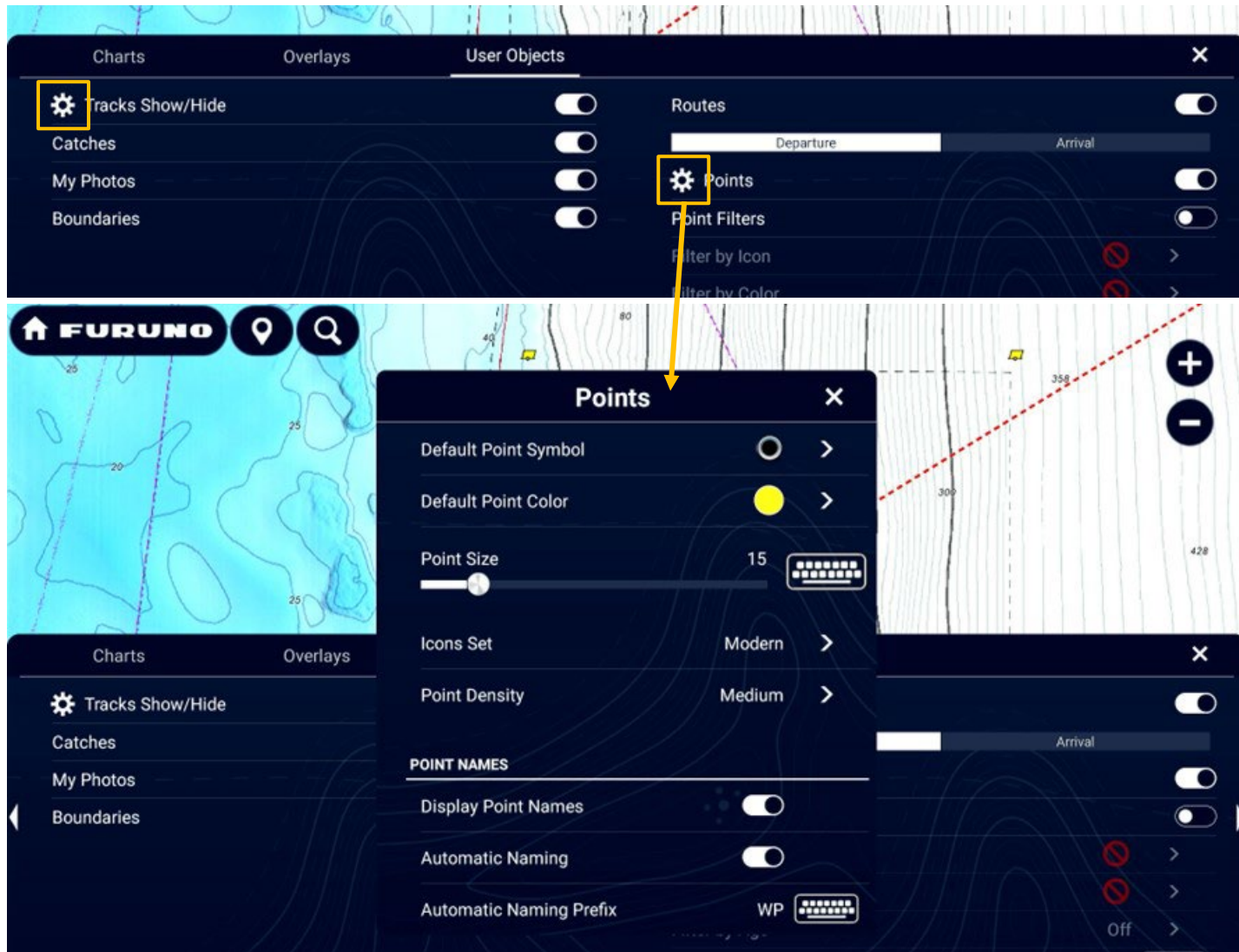
New TZ Weather, available with TZ Navigator, TZ Professional, and TZ iBoat is now available with V25.11. The new TZ Weather offers a rich presentation. In addition, a premium weather service is available on a monthly subscription basis.



14. Enhanced Layer Menu

TZtouchXL V25.11 offers more setting options in the Layer menu.

(1) Shortcut icons [⚙️] to detailed settings are available for certain functions. The following example is the shortcut to Points settings.



(2) The Layer menu will now open with the previously opened tab. It remembers the last menu opened and instead of always going to the far-left menu, will now go back to the previous menu you had open.

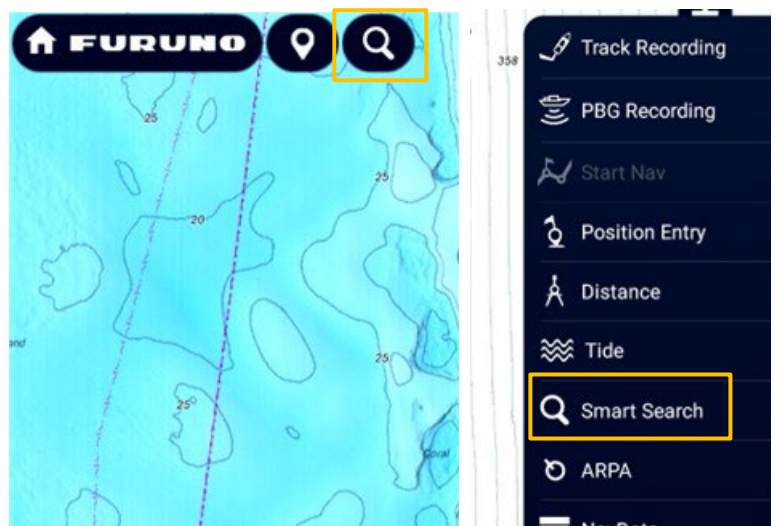
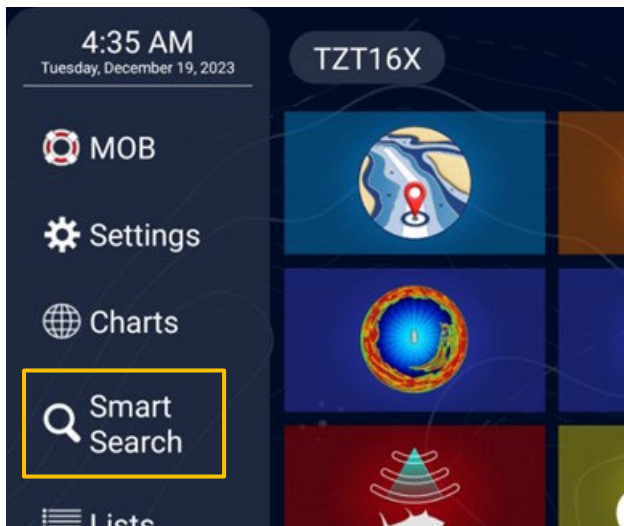
(3) The location of [Community Maps] and [ACCU-FISH Icons] are changed to the [Overlays] tab.



15. Enhanced Search Functions

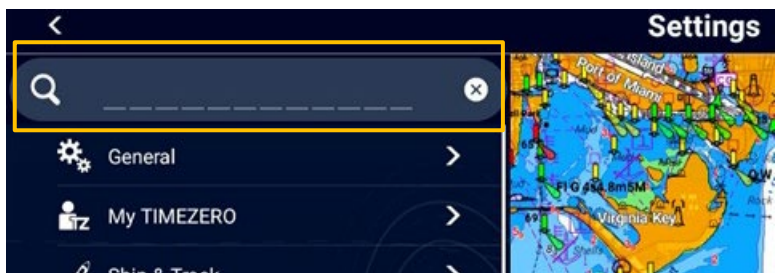
15.1. Smart Search

Smart Search features available on TZ Navigator, TZ Professional, and TZ iBoat, are now available with NavNet TZtouchXL series MFDs. In addition to chart contents, various information such as points, routes, AIS, etc. can be searched. The Smart Search page can be accessed via Home, the [Search] icon on the top left, the Slide-out menu, or a two-finger tap.



15.2. Menu Search

The Settings menu can be searched by text. The search box is deployed at the top of the Settings page where menu items can be searched.



16. Details of Software Versions

The table on the right shows the detailed versions of the updated items.

Items	TZT10X/13X/16X/22X/24X/BBX
First Boot	1950246-25.11 (Prev. 24.22.2)
System Version (OS)	1950247-25.11 (Prev. 24.22.2)
Application	1950248-25.11 (Prev. 24.22.2)
Built-in Fish Finder: App	0252495-25.11 (Prev. 24.22)
Selftest Application	1950249-25.11 (Prev. 24.21)
Browser Files	1950251-25.11 (Prev. 24.21)
eGuide	E42-02205-C (Prev. -B)

17. Others

- (1) **New:** Opened pages or contextual menus can stay on the screen. (Previously, opened pages or contextual menus disappeared in preset seconds, the longest being 30 seconds.)



- (2) **New:** Pinch and pan speed for touch operation can be adjusted between [x1] (default) to [x3]. When you frequently scroll and zoom in/out charts to check short and long ranges, you may change the speed to [x3] to allow charts to be dynamically zoomed and/or scrolled.
- (3) **New:** On the Home page, animation is added when the screen is transferred from Home to the selected page.
- (4) **New:** TX/STBY buttons for CHIRP Side Scan and Sonar are added in the Quick Access Window.
- (5) **Change:** The primary source of distance calculation, such as Fuel Distance To Empty (FDTE) and others, is based on SOG. (Previous: STW)
- (6) **Change:** The design of icons at the top of the List page is changed.
- (7) **Improvement:** When the Fish Finder and CHIRP Side Scan are simultaneously used and either one is set to STBY, the other unit still in TX will transmit according to the current range scale.
- (8) **Improvement:** The issue of no user object synchronization when setting the Anchor Watch Alarm Value in the unit of the yard (yd) is fixed.

--- END ---

- All brand and product names are registered trademarks, trademarks, or service marks of their respective holders.