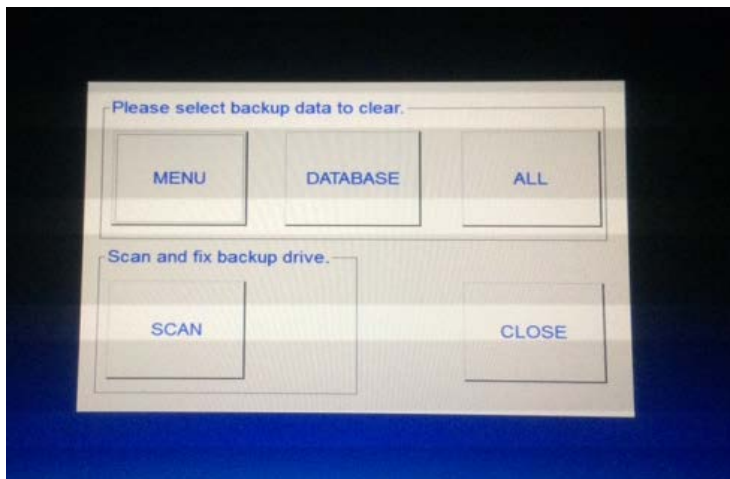


TZT9/14 Master Reset

1. Power OFF the TZT9/14 by pushing the “Power” key and select Power off This Device.
2. Disconnect any network devices
3. Disconnect any NMEA2000 Instruments
4. Press and Hold the [HOME] key

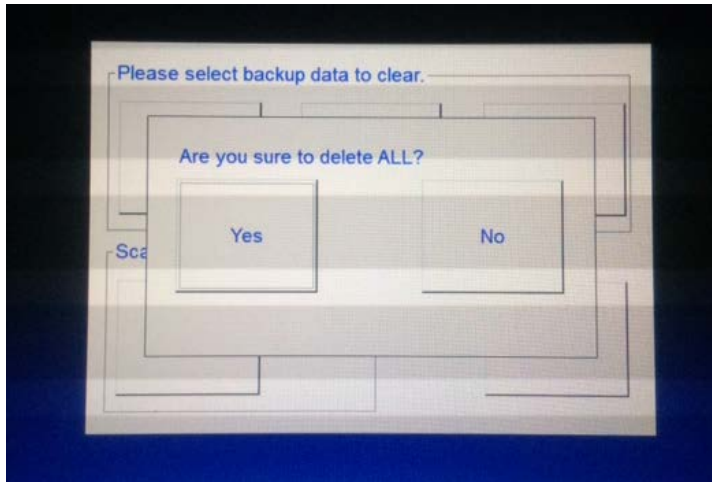


5. Start the TZT and continue to hold in/press the [HOME] key
6. Once the “Please Select Backup data to Clear” window appears, select “ALL”

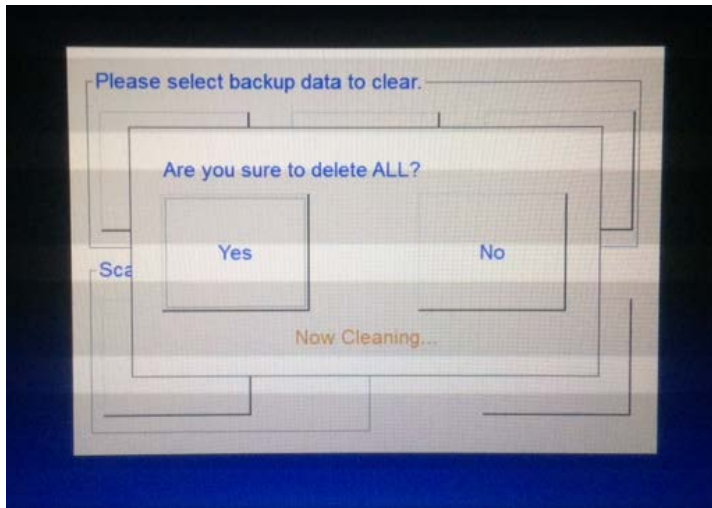


7. After selecting **ALL**, Select “Yes” to confirm.

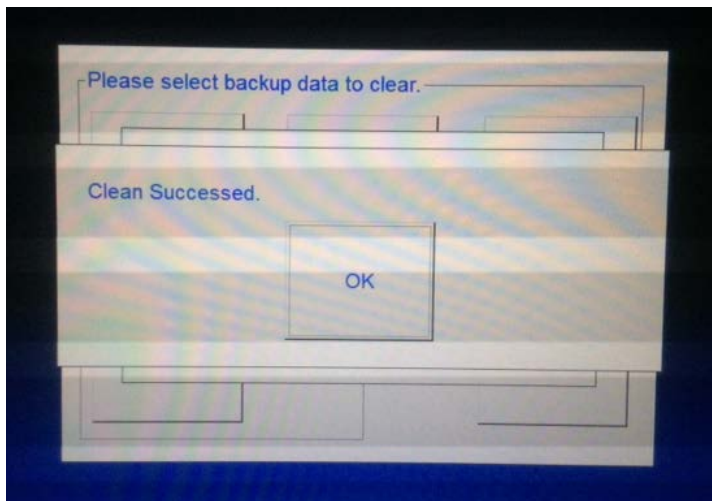
Caution: If you have not previously saved your waypoints, routes, tracklines, and system settings, press close at this time and follow the procedures in chapter 8 of the operator’s manual to save that information. Once you press all, this information will be cleared. It cannot be retrieved.



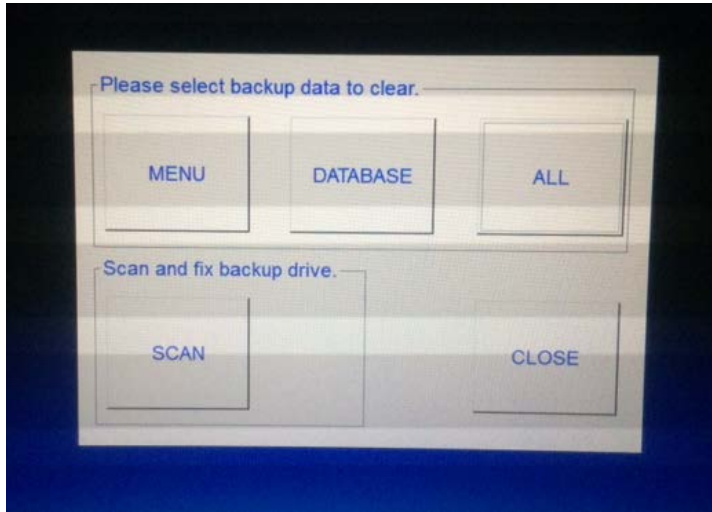
8. After pressing the “Yes” button, the following screen will appear and display “Now Cleaning”.



9. If the master reset was successful, the “Clean Succeeded” screen will appear to confirm that the Master Reset has been done. Press the “Okay” button. Note: If the master reset failed, perform the master reset again.



10. Press close.



11) The TZT9/14 will reboot itself to normal operation. Turn the display off; re-connect the Ethernet and NMEA2000 cable and power on the unit.

12) Reload the saved information such as waypoints, routes, tracklines, and system settings.

XXXENDXXX