

FURUNO

How to Download and Prepare an SD Card for GP16/1870F Update

1. Software and instructions for updating units in the field can be found on our website under the software tab on the product page for each Plotter display. Download the new software for the GP1670F/1870F to your PC.
2. Your PC may ask you if you want to Run or Save the file. Please save the file to your PC in a known location.

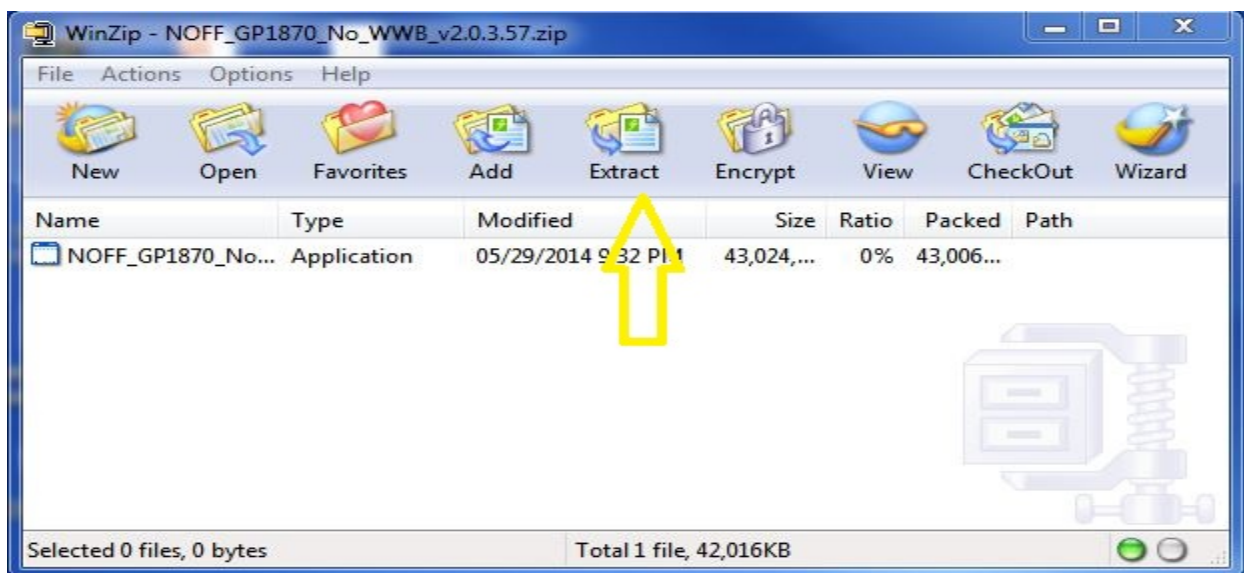
Do you want to open or save UPLOADER.zip (107 MB) from www.furunousa.com?

Open Save Cancel X

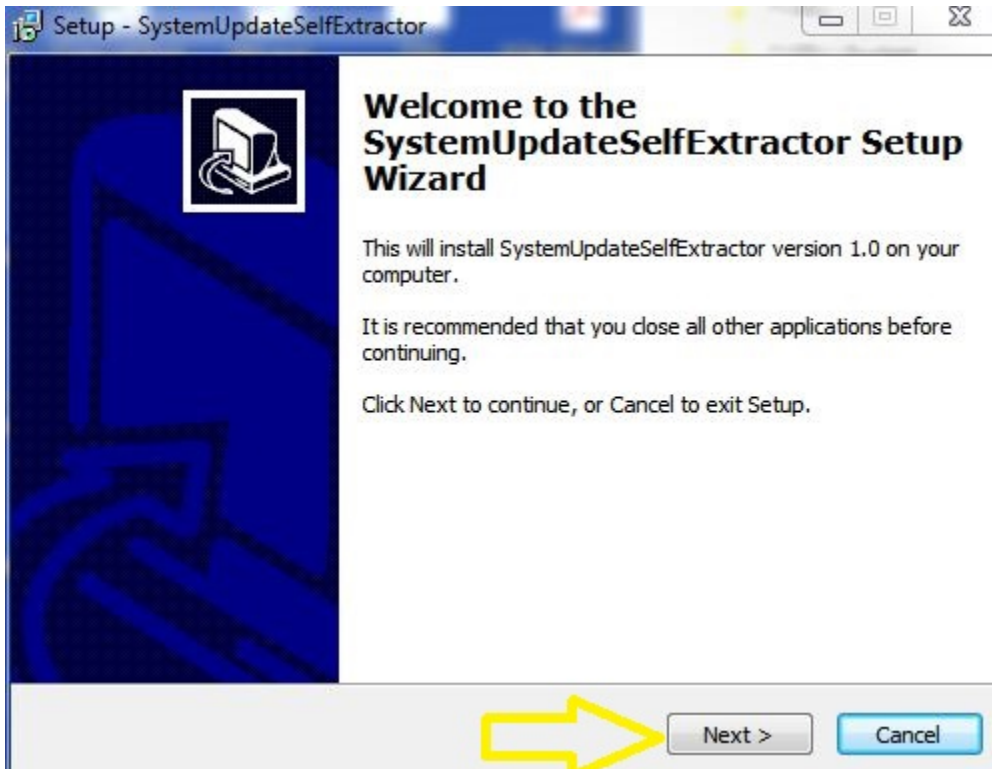
3. Navigate to the software file you just saved to your PC.

NOFF_GP1870_No_WWB_v2.0.3.57.zip 06/12/2014 4:49 PM WinZip File 41,999 KB

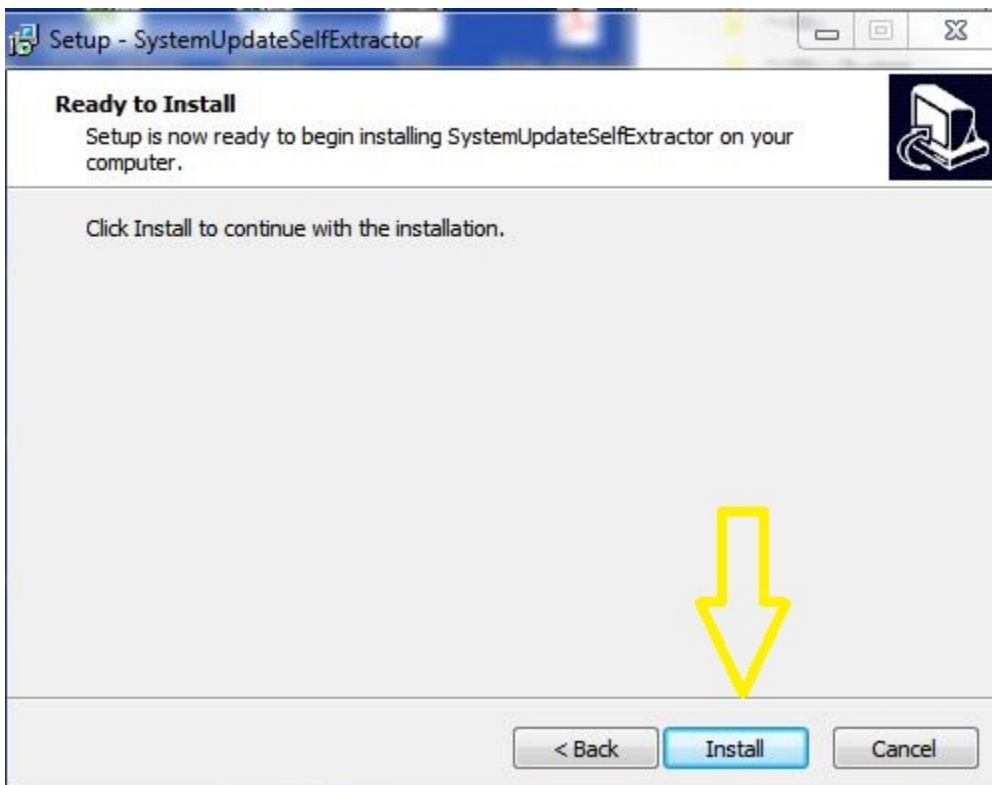
4. Double Click on the .zip file to open it and prepare for extraction.



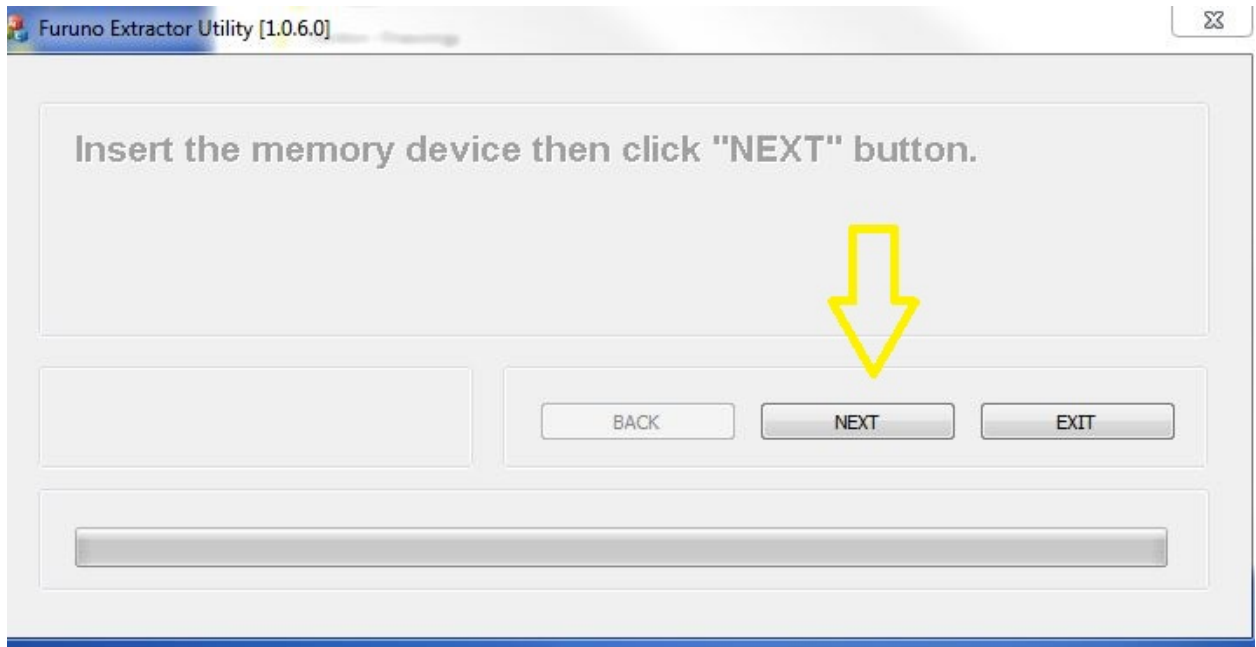
5. Once you click on “Extract” the following screen will appear:



6. Click on the “Next” button and the following screen appears:

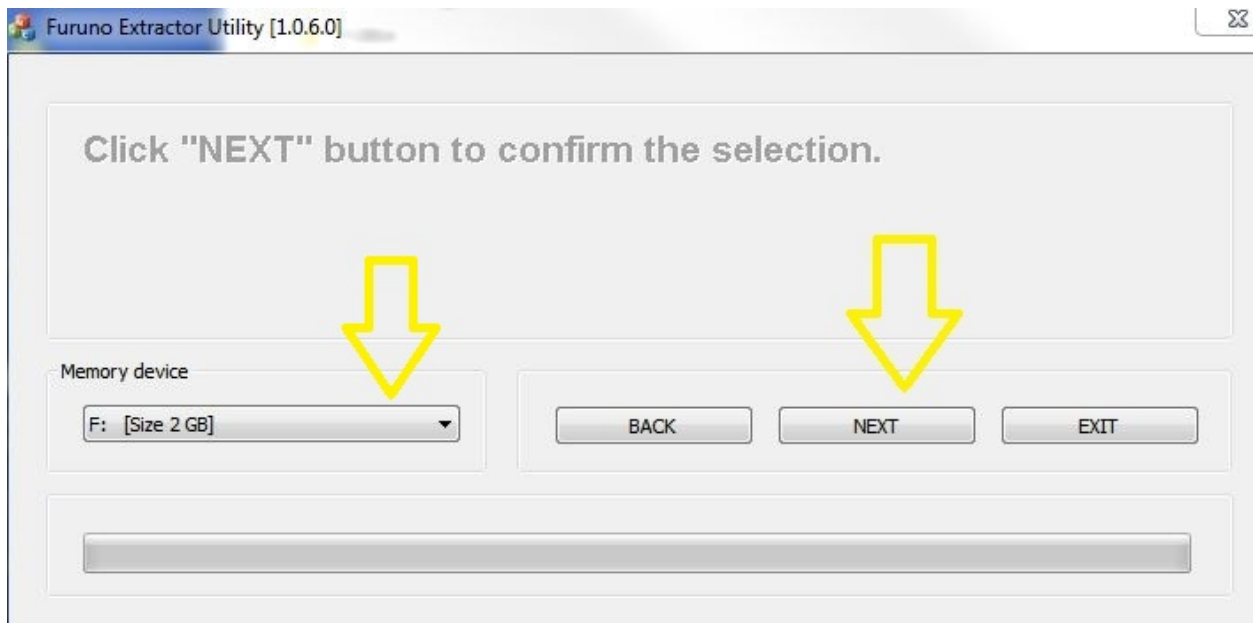


7. Click on "Install" and the following screen appears:

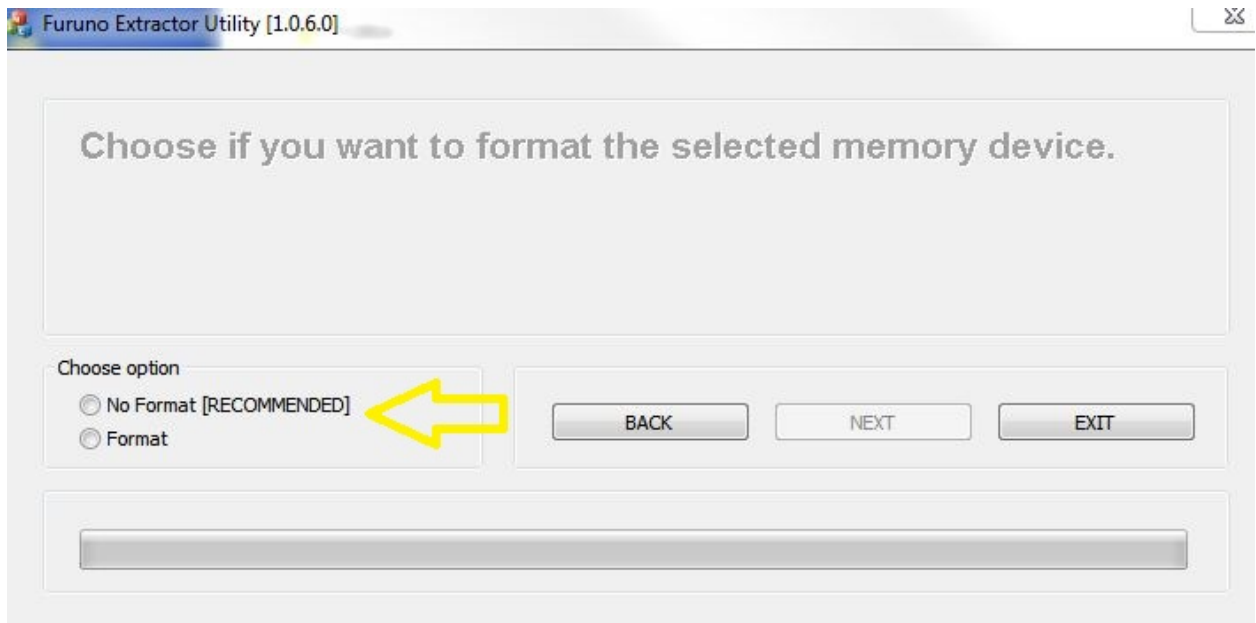


8. At this point, please insert a blank formatted SD card into your PC and click next.

9. The following screen will appear:



10. Choose your SD card in the "Memory Device" drop down box, then click "Next". The following screen will appear:



11. Choose “No Format” and click on “Next”



12. The software file will now be extracted to your SD card. Once completed, press “Exit” to end the process.
13. You are now ready to remove your SD card from your PC and update your Furuno GP1670F or GP1870F.
14. See the “How to update your GP1670F/1870F” document under the software update tab of the GP1670F/GP1870F on www.furunousa.com