

DFF1 Software Update Using TZT2 or TZT3

Preperation for DFF1 Software update

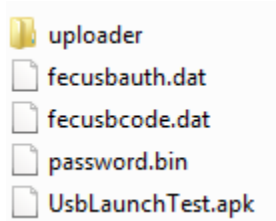
1. USB memory (Do not use SD to USB Adapter)



2. Download DFF1 Software for the TZT2/3 from the Furuno USA website under the “Software” selection of the DFF1 product page.

3. Unzip DFF1 Software

4. Move unzipped software contents to root of USB memory. Root of USB memory will contain the following only:

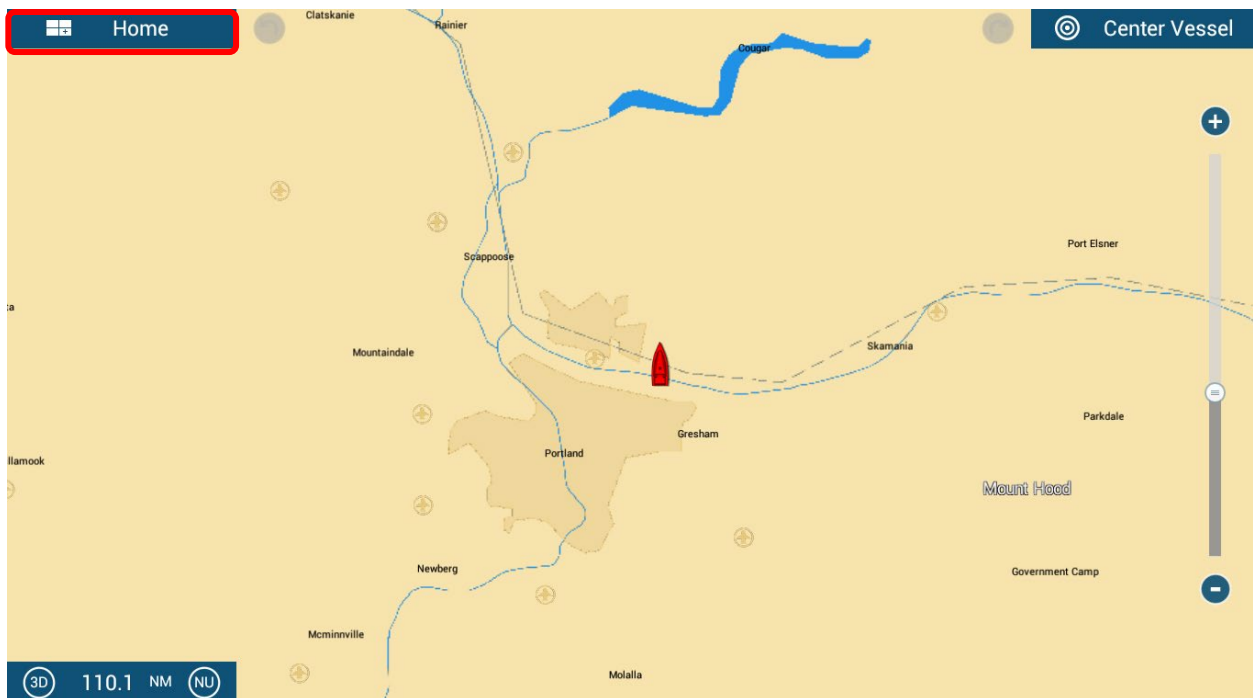


(Note: When you open your USB memory window, you should see only the files shown above. They should not be changed or placed inside any additional folders. Other software, photos, or files should NOT be on the USB along with this upgrade software)

5. With the power off to the MFD. Insert USB memory into the USB pigtail cable located on the back of the TZT2/3 MFD. This will be a white pigtail cable. Power on the TZT2/3 MFD and boot up normally.

You are now ready to begin the DFF1 software update

1. Press **Home** Button



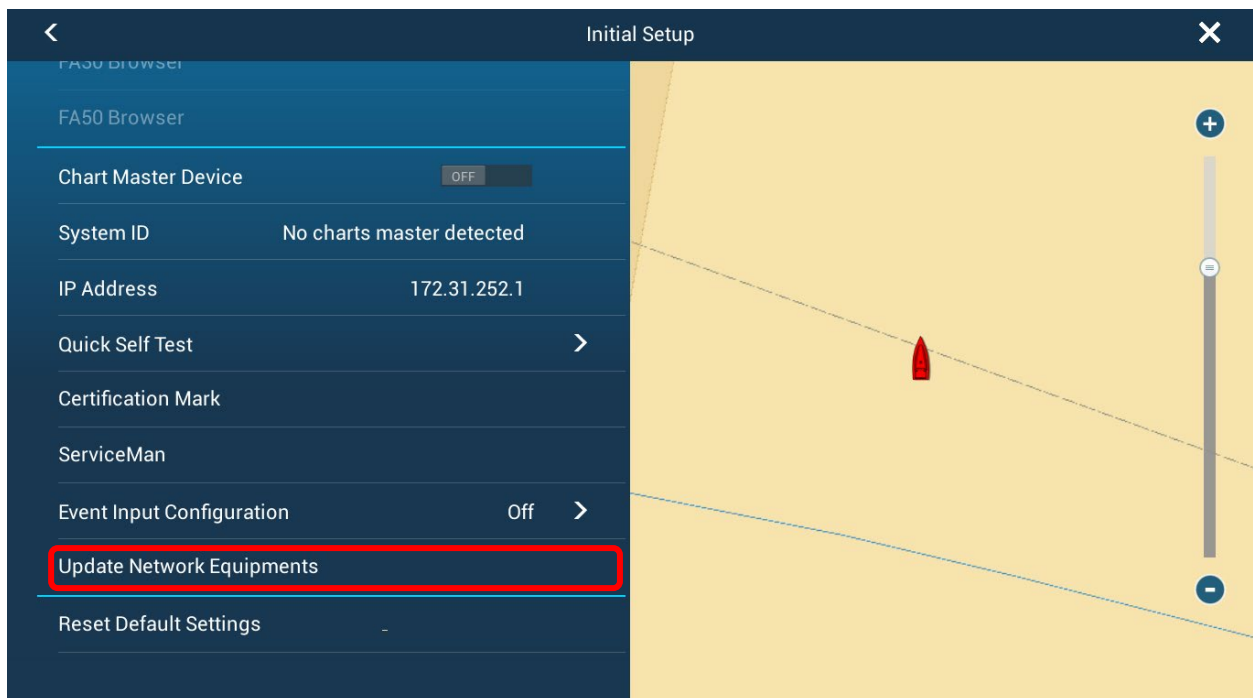
2. Press **Settings**



3. Press Initial Setup



4. Press Update Network Equipment



(Time)	Update	Product name	Update item	Current prog#	Prog# in Storage Device	Result
Version		Please push 'Start'				
Start		Scan		Exit		

(Time)	Update	Product name	Update item	Current prog#	Prog# in Storage Device	Result
5 [min]	<input checked="" type="checkbox"/>	F-NMEA2K2	Application	01.03:01.01	01.16:01.01	-

Version

Please push 'Start'

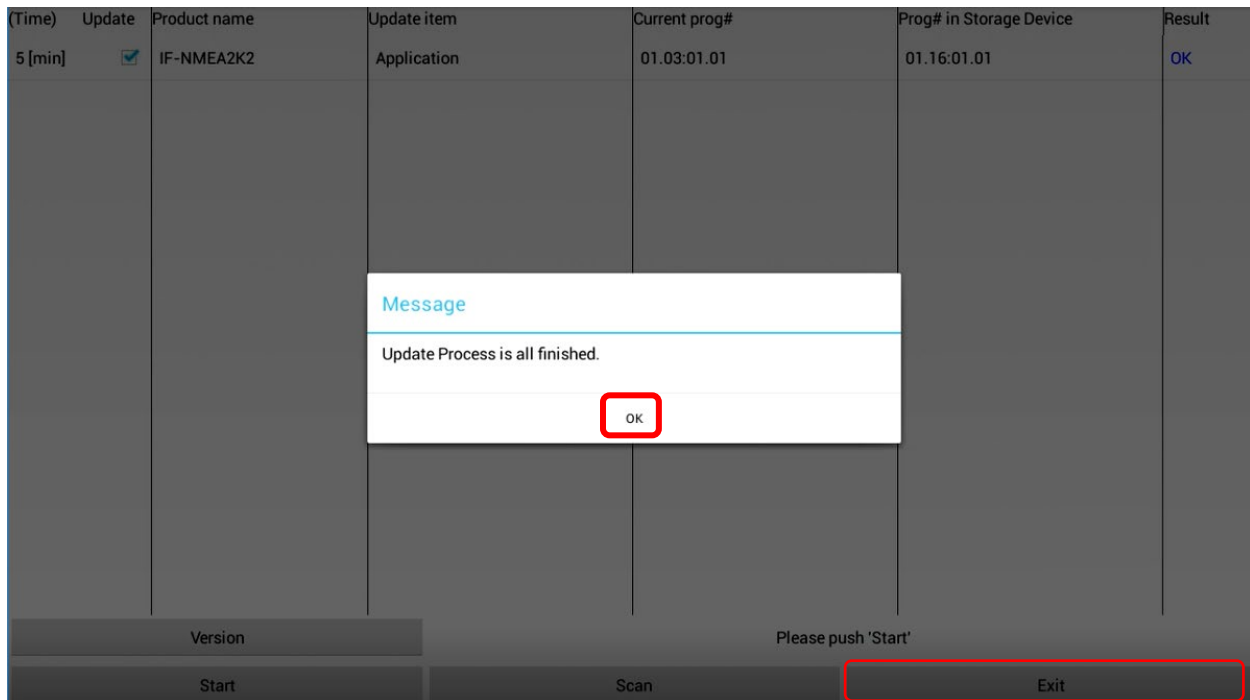
Start

Scan

Exit

7. You will be notified once the update process is finished.

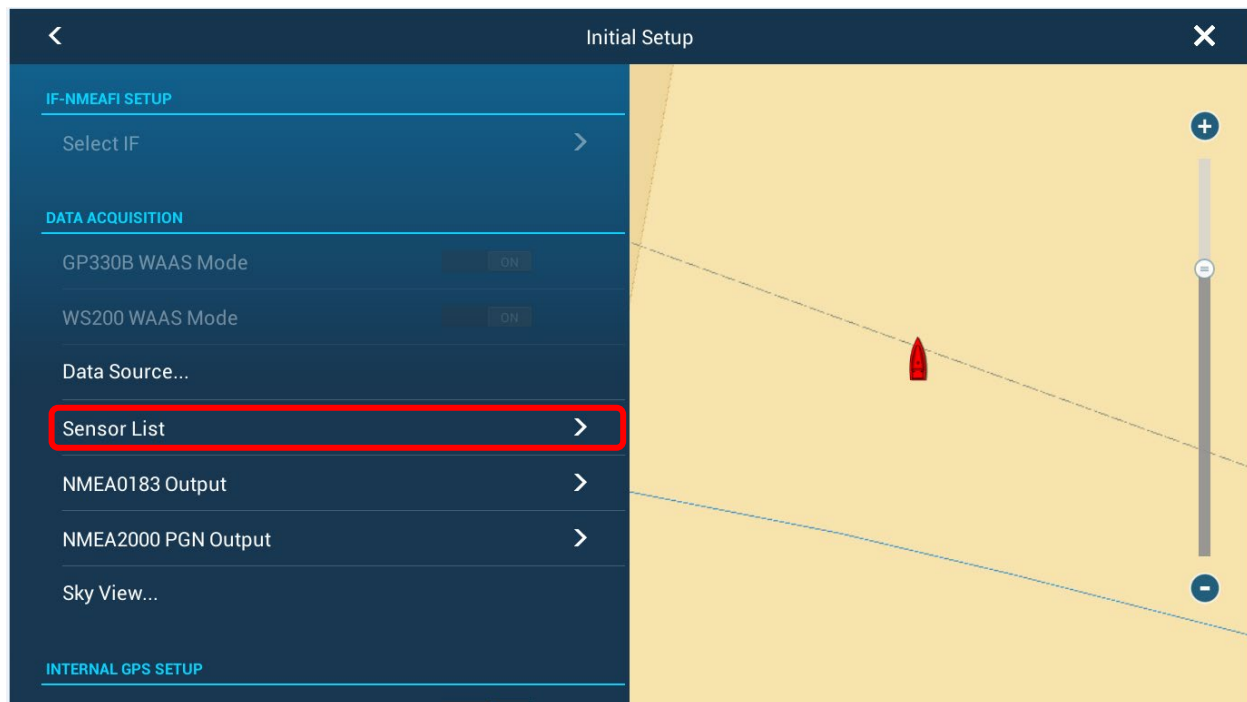
Press **Ok** and then press **Exit**



The unit will reboot back to normal mode. You may now remove the USB memory.

How to verify DFF1 has been successfully updated.



1. Access the **Initial Setup** menu. Press **Sensor List**




2. Verify that the updated software version is displayed.

(IF-NMEA2K2 used as example only)

NETWORK SENSOR

Name	NickName	Version	IP	HostName
 TZTL15F (Me)	TZTL15F	 06.21:06.21:06.23:	172.031.252.001	MF252001

CAN BUS SENSOR

Name	NickName	Version	Instance
IF-NMEA2K2	IF-NMEA2K2	 01.16:01.01	0