

# FURUNO

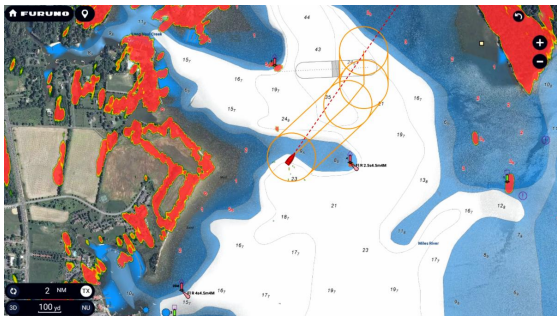
## Furuno's TZtouchXL With Risk Visualizer™ And AI Avoidance Route™ Offer Advanced Features For Workboats

February 14, 2024



**Camas, WA** - Furuno, a trusted name in marine electronics, is excited to introduce the NavNet TZtouchXL series, a suite of cutting-edge Multi-Function Displays (MFDs) designed to meet the demanding requirements of workboat operators, including ferries and tugboats. These MFDs bring advanced technology and rugged reliability to the forefront, ensuring seamless operations in the most challenging maritime environments.

The NavNet TZtouchXL series encompasses three robust large-sized MFDs: the 16" TZT16X, 22" TZT22XL, and 24" TZT24XL. These MFDs feature super-wide, all-glass displays with exceptional clarity and brightness, providing workboat operators with a clear view of their surroundings, even in adverse conditions. The rugged all-glass design is not only functional but also enhances the durability and functionality of the helm, perfectly suited to the demanding nature of workboat operations. For boats requiring a more compact solution, the 10" TZT10XL and 13" TZT13XL deliver performance with space efficiency. These MFDs incorporate Furuno's renowned hybrid control with the intuitive RotoKey™ control knob, seamlessly integrating with TZtouchXL's user-friendly interface to simplify navigation. Intuitive Edge Swipe functions and customizable quick pages cater to the efficiency-focused mindset of workboat operators, and each TZtouchXL MFD is powered by a hexacore processor for rapid response while monitoring critical data.



*AI Avoidance Route™ detects hazardous objects and instantly calculates the safest route to avoid them*

When connected to an award-winning Furuno DRS Radar, two new, powerful safety features are unlocked: Risk Visualizer™ and AI Avoidance Route™. Risk Visualizer™ is a unique function of Furuno Radars that provides a 360° visual representation of potential collision risks of approaching objects around the vessel. Unlike CPA/TCPA alarms, which indicate only the risks visible on the ship's current course, Risk Visualizer™ assesses all of the objects around the vessel. Dynamic icons are automatically created for targets with the highest probability of collision, ensuring the captain has the information they need to maintain safe distances when passing. The new AI Avoidance Route™ feature takes all the information provided by the Radar and instantly provides a safe route around those hazards, which can be sent to a Furuno NAVpilot series autopilot with a single tap.

NavNet TZtouchXL also supports essential workboat tools such as AIS and Autopilot, along with new chart plotting features found in TZ MAPS, a comprehensive new standard in nautical cartography. A one-time, cost-effective purchase unlocks TZ MAPS charts for the entire US or other global areas of your choice. TZ MAPS enhances workboat navigation with full vector capabilities, ensuring clarity and detail at all levels of zoom. Operators can customize color palettes and edit chart objects, tailoring the charts to meet their specific needs.

With a complimentary TimeZero account, workboat operators can efficiently manage their data, including backups and retrieval from the cloud, ensuring that essential operational data is always at their fingertips.

Furuno, a pioneering name in marine electronics since 1948, continues to evolve with the NavNet TZtouchXL series, catering to the unique challenges of workboat operators around the world. For those who navigate the waters in the service of others, NavNet TZtouchXL is the ultimate partner, offering the perfect combination of advanced technology and rugged reliability. Experience the future of workboat navigation with Furuno's NavNet TZtouchXL. For more information, visit [www.NavNet.com](http://www.NavNet.com), or to learn more about Furuno's complete line of Marine Electronics, contact: Furuno U.S.A., 4400 N.W. Pacific Rim Blvd., Camas, WA 98607, or visit their website at [www.FurunoUSA.com](http://www.FurunoUSA.com).