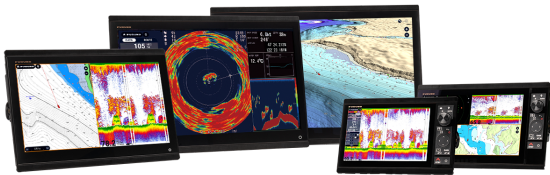


FURUNO

All-New TZtouchXL MFD Series Unleashes Unrivalled Fishing Features And Astonishing Chart Detail

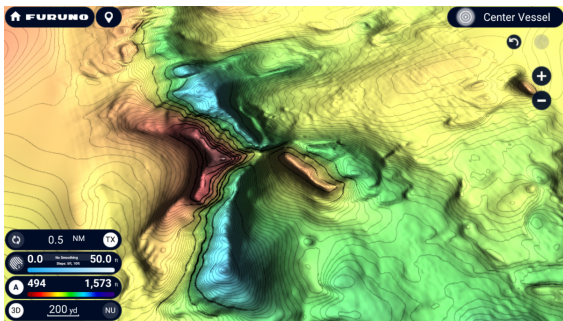
February 14, 2024

Camas, WA - Furuno has once again raised the bar for sportfishing enthusiasts with the debut of the complete NavNet TZtouchXL series of Multi Function Displays (MFDs), designed to cater to the needs of avid anglers. The NavNet TZtouchXL series introduces five sizes of MFDs with all the features fishermen desire, including exclusive, never-before-seen features in recreational navigation devices, such as the new TZ MAPS with BathyVision and AI Routing. Plus, they pack all the power and performance that has made Furuno the electronics of choice for serious anglers, all wrapped in a fresh and simple-to-use user interface.



The TZT10X, TZT13X, and TZT16X feature a built-in 1kW TruEcho CHIRP or CW Fish Finder as well as built-in 235kHz or 455kHz CHIRP™ Side-Scan that can show fish and structure in high detail port and starboard, providing crucial insights for successful fishing trips. The Fish Finder and Side-Scan functions can be accessed by the TZT22X and TZT24X across the NavNet network. NavNet TZtouchXL delivers the ability to tailor the system with a wide array of high-powered Fish Finders for deep dropping. For anglers who like to deep drop or sword fish, the DFF3-UHD Network Fish Finder offers high-power 2kW/3kW output to go deep. The eye-popping DFF3D Multibeam Sonar shows fish and structure around the vessel in 3D while generating amazing custom shaded relief maps. All the essential fishing tools like Magnetron and Solid-State Doppler Radars, AIS, and NAVpilot Autopilots are compatible. Plus, if you have a Furuno Sonar, you can even display it right on your TZtouchXL screen with an optional video kit.

What sets these MFDs so far ahead of the field for anglers is an all-new chart offering called TZ MAPS. BathyVision, a new feature in TZ MAPS, offers anglers truly 'off the charts' bathymetric data with contour lines that can be configured with a single tap. When we say configurable, we're talking down to a resolution of a mere 3 inches between contours - that's 3x better than any other bathymetric chart currently on the market! Fishermen will appreciate the custom depth color shading that enhances the bathymetric data, creating fishing charts of unmatched detail and clarity. All of this can be rendered with custom color palettes and terrain shading, giving anglers an electronic charting experience that goes far beyond any premium chart service before it.



With TZ MAPS BathyVision, the density of contour lines can be rendered down to an eye-popping 3" resolution

For anglers looking for an added element of control, two new remote control options are available, identical in function to the keypad on the TZT10X and TZT13X. The vertically-oriented MCU006 and horizontal MCU006H can control any TZtouchXL MFD in the network. Both feature a comfortable RotoKey™ and beveled buttons for enhanced ease of use. The ten dedicated dual-purpose buttons operate different functions, including the ability to access the Edge Swiping functionality that makes the NavNet TZtouch series so easy to use.



Furuno has been renowned as the global leader in marine electronics since its inception in 1948 with the introduction of the world's first commercial Fish Finder. For sportfishing enthusiasts who demand the best, NavNet TZtouchXL is the ultimate companion on the journey to reel in that trophy catch. Experience the future of sportfishing technology with Furuno's NavNet TZtouchXL. For more information on NavNet TZtouchXL, visit www.NavNet.com, or to learn more about Furuno's complete line of Marine Electronics, contact: Furuno U.S.A., 4400 N.W. Pacific Rim Blvd., Camas, WA 98607, or visit their website at www.FurunoUSA.com.