

FURUNO

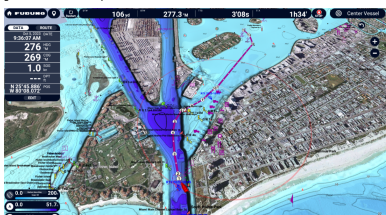
Furuno Unveils TZtouchXL Series, Equipping Sailors With Revolutionary Navigation Solutions

February 14, 2024



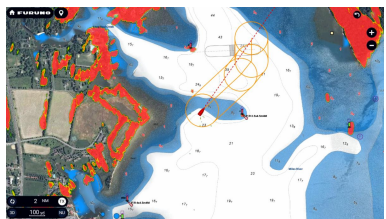
Camas, WA - Furuno, a respected name in marine electronics, is thrilled to introduce the NavNet TZtouchXL series, meticulously crafted to embrace the art of sailing by offering a harmonious blend of advanced technology with intuitive, user-friendly features. The NavNet TZtouchXL series introduces exclusive, never-before-seen features in navigation devices, such as the all-new TZ MAPS with AI Routing. Plus, they pack all of the power and performance that has made Furuno the electronics of choice for sailors.

The NavNet TZtouchXL series includes five generous displays. The 16" TZT16X, 22" TZT22XL, and 24" TZT24XL feature extra-wide, all-glass displays with exceptional clarity and brightness, ensuring that every detail on the water is vividly captured. Their all-glass design is not just functional but adds a touch of elegance to your sailboat's helm, harmonizing with the timeless aesthetics of sailboat design. For those who prefer a more compact solution, the 10" TZT10XL and 13" TZT13XL offer sailors the perfect balance of form and function. These MFDs feature Furuno's renowned hybrid control, integrating multi-touch capabilities and the intuitive RotoKey™ control knob with Intuitive Edge Swipe functions and customizable quick pages that ensure effortless navigation when under sail. Powered by a hexacore processor, each TZtouchXL guarantees swift responsiveness.



With TZ Maps, creating detailed new routes is a breeze!

What truly sets these MFDs apart is the inclusion of TZ MAPS, a state-of-the-art chart system that gives sailors a personalized touch to their nautical adventures. Bathymetric data is rendered from the same high-resolution database used for TZ MAPS' custom depth shading. TZ MAPS can be rendered with custom color palettes and terrain shading, providing an electronic charting experience that goes far beyond any premium chart before it. The purchase of any TZ MAPS area also unlocks added functionality for that area, such as the powerful AI Routing feature that intelligently plans routes that consider the boat's draft as well as navigational obstacles. The purchase of any TZ MAPS chart directly from the MFD also unlocks those charts in the free [TZ iBoat](#) app for mobile devices as well as for [TZ Pro navigation software](#), allowing sailors to transfer their waypoints and routes directly to TZtouchXL. With a complimentary TimeZero account, sailboat data management becomes effortless, with the ability to back up or retrieve essential sailing data from the cloud, ensuring that every voyage is a seamless and memorable experience.



AI Avoidance Route detects hazardous objects and instantly calculates the safest route to avoid them

When connected to an award-winning DRS Solid-State Dome or Open Array Radar, two new, powerful safety features are unlocked: Risk Visualizer™ and AI Avoidance Route™. Risk Visualizer™ is a unique function of Furuno Radars that provides a 360° visual representation of potential collision risks of approaching objects around the vessel. Unlike CPA/TCPA alarms which indicate only the risks visible on the ship's current course, Risk Visualizer™ assesses all of the objects around the vessel. Dynamic icons are automatically created for targets with the highest probability of collision, ensuring the captain has the information they need to maintain safe distances when passing. The new AI Avoidance Route™ feature takes all the information provided by the Radar and instantly provides a safe route around those hazards, which can be sent to a Furuno NAVpilot series autopilot with a single tap.



NavNet TZtouchXL also supports essential sailing tools like AIS and Autopilot, and includes features such as PIN Code Lock to enhance security.

Furuno, a pioneer in marine electronics since 1948, continues to evolve with the NavNet TZtouchXL series, catering to the unique needs and passion of sailors. For those who find solace in the art of sailing, NavNet TZtouchXL is the ultimate companion, offering an unprecedented blend of technology and tradition. Experience the future of sailboat navigation with Furuno's NavNet TZtouchXL. For more information, visit www.NavNet.com, or to learn more about Furuno's complete line of Marine Electronics, contact: Furuno U.S.A., 4400 N.W. Pacific Rim Blvd., Camas, WA 98607, or visit their website at www.FurunoUSA.com.