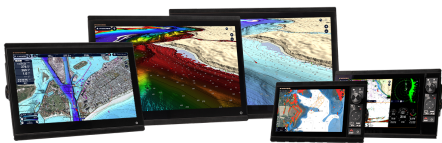


FURUNO

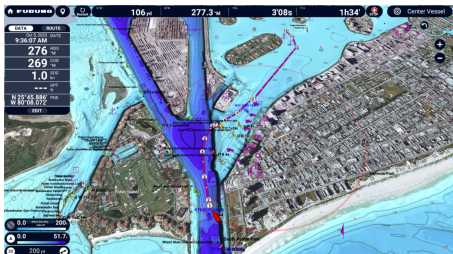
Furuno TZtouchXL With TZ MAPS And New Safety Features Set The Standard For Luxury, Simplicity, And Performance

February 14, 2024



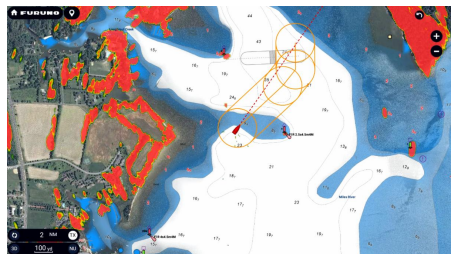
Camas, WA - Furuno, a name synonymous with uncompromising excellence in marine electronics, proudly presents the NavNet TZtouchXL series, meticulously crafted to cater to the discerning tastes of high-end megayacht owners. This series of five Multi Function Displays (MFDs) represents the pinnacle of maritime technology, offering an unparalleled fusion of cutting-edge capabilities and refined elegance.

At the core of the NavNet TZtouchXL series, discerning megayacht owners will find three remarkable, large-sized MFDs: the 16" TZT16X, 22" TZT22XL, and 24" TZT24XL. Boasting wide, all-glass displays with exceptional clarity and luminance, these stunning new MFDs deliver an extraordinary viewing experience. The seamless, all-glass design allows for side-by-side mounting, enhancing both the functionality and aesthetics of the helm. These MFDs also offer HDMI output, allowing for remote display in other locations throughout the yacht. For those who seek uncompromising quality in a more compact form in a remote location or tender, the 10" TZT10XL and 13" TZT13XL offer a perfect blend of form and function. These MFDs feature Furuno's renowned hybrid control, seamlessly integrating multi-touch capabilities with the intuitive RotoKey™ control knob and dedicated soft-touch keys, ensuring effortless navigation. Powered by a hexacore processor, every TZtouchXL guarantees lightning-fast responsiveness in up to a six-way split window configuration, providing an expansive canvas to display the yacht's essential information.



With TZ MAPS, creating detailed new routes becomes effortless.

What truly distinguishes these MFDs is the introduction of TZ MAPS, an extraordinary new chart system. TZ MAPS goes far beyond any premium chart service before it, redefining elegance in cartography with detailed charts that cover incredibly wide areas, allowing navigators to plan their journeys with ease. With the ability to mimic the appearance of raster charts while remaining fully vector, chart appearance can be tailored to meet the needs of the crew, including multiple color palettes, satellite photography, and bathymetric data configurable to a resolution of a mere 3 inches between contour lines. TZ MAPS also unlocks a powerful new AI Routing function that intelligently plans out routes, taking into consideration the boat's draft and navigational obstacles. To round it off, the purchase of any TZ MAPS chart unlocks those charts in the free [TZ iBoat](#) app for mobile devices such as a phone or tablet, allowing the navigator to have a home planning app that will transfer their points and routes directly to the TZtouchXL MFD. With a complimentary TimeZero account and the ability to back up or retrieve essential yacht data from the cloud with just a few taps, data management becomes effortless.



AI Avoidance Route detects hazardous objects and instantly calculates the safest route to avoid them

When connected to a DRS Radar, powerful safety features are unlocked: Risk Visualizer™ and AI Avoidance Route™. Risk Visualizer™ is a unique function of Furuno Radars that provides a 360° visual representation of potential collision risks with approaching objects around the vessel. Unlike CPA/TCPA alarms, which indicate only the risks visible on the ship's current course, Risk Visualizer™ assesses all of the objects around the vessel. Dynamic icons are automatically created for targets with the highest probability of collision, ensuring the captain has the information they need to maintain safe distances when passing. The new AI Avoidance Route™ feature takes all the information provided by the Radar and instantly provides a safe route around those hazards, which can be sent to a Furuno NAVpilot series autopilot with a single tap.

Furuno, a pioneering name in marine electronics since 1948, continues to push the boundaries of innovation and luxury with the NavNet TZtouchXL series. For megayacht owners who demand nothing but the best, NavNet TZtouchXL is the ultimate expression of excellence that resonates with captains and owners of the finest vessels on the high seas. Experience the future of megayacht technology with Furuno's NavNet TZtouchXL. For more information, visit www.NavNet.com, or to learn more about Furuno's complete line of Marine Electronics, contact: Furuno U.S.A., 4400 N.W. Pacific Rim Blvd., Camas, WA 98607, or visit their website at www.FurunoUSA.com.