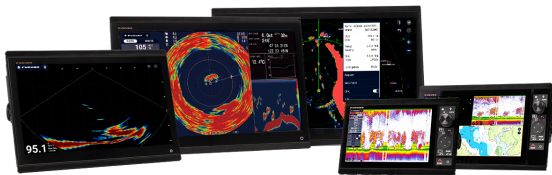


FURUNO

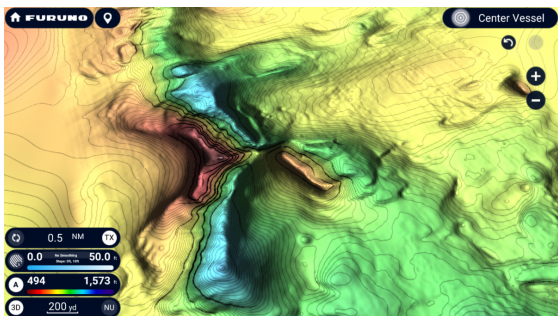
Furuno TZtouchXL With BathyVision Provides All-New Capabilities For Commercial Fishing Fleets

February 14, 2024



Camas, WA - Furuno, a respected leader in marine electronics, is thrilled to introduce the NavNet TZtouchXL series, meticulously crafted to meet the exacting demands of commercial fishing vessels. These Multi-Function Displays (MFDs) are purpose-built to deliver the rugged reliability and advanced features that professional fishermen rely on to make their livelihoods at sea.

The NavNet TZtouchXL series includes five generous displays. The 16" TZT16X, 22" TZT22XL, and 24" TZT24XL feature extra-wide, all-glass displays with exceptional clarity and brightness, built to withstand the rigors of commercial fishing and ensure dependable performance in the toughest environments. For vessels requiring a more compact solution, the 10" TZT10XL and 13" TZT13XL deliver performance with space efficiency. The TZT10XL and TZT13XL incorporate Furuno's renowned hybrid control and intuitive RotoKey™ control knob with TZtouchXL's user-friendly interface to simplify operation. Intuitive Edge Swipe functions and customizable quick pages cater to the efficiency-focused mindset of commercial fishing operations, and each TZtouchXL MFD is powered by a hexacore processor for rapid response while monitoring critical data.



With TZ MAPS BathyVision, the density of contour lines can be rendered down to an eye-popping 3" resolution

What truly sets these MFDs apart is the inclusion of TZ Maps, a state-of-the-art chart system designed with commercial fishermen in mind. BathyVision provides commercial fishermen with truly 'off the charts' bathymetric data, with contour lines that can be configured with a single tap. When we say configurable, we're talking down to a resolution of a mere 3 inches between contours - 3x better than any other bathymetric chart currently on the market. Bathymetric data is rendered from the same high-resolution database used for TZ MAPS' custom depth shading and can be overlaid onto the navigation charts to create fishing charts unlike any seen before. All of this can be rendered with custom color palettes and terrain shading, to give fishermen an electronic charting experience that goes far beyond any premium chart before it. The purchase of any TZ MAPS area also unlocks added functionality for that area, such as the powerful AI Routing feature that intelligently plans routes that consider the boat's draft as well as navigational obstacles. The purchase of any TZ MAPS chart directly from the MFD also unlocks those charts in the free TZ iBoat app for mobile devices as well as for TZ Pro navigation software, allowing fishing operations to their waypoints and routes directly to TZtouchXL. With a free TimeZero account, hard-earned waypoints and routes can be easily backed up or retrieved from the cloud with just a few taps.

The built-in dual-channel CHIRP Fish Finder on the TZ10X/13X16X features Furuno's legendary Auto Gain to clearly you all of the fish targets beneath the vessel. NavNet TZtouchXL also supports essential commercial fishing tools such as magnetron or Solid-State Doppler Radar, high-powered Fish Finders, AIS, Autopilot, and Deep Water Multibeam Sonar options, and features like PIN Code Lock enhance security.

Furuno, a pioneering name in marine electronics since 1948, continues to evolve with the NavNet TZtouchXL series, dedicated to meeting professional commercial fishermen's unique challenges. For those who rely on the sea for their livelihood, NavNet TZtouchXL is the ultimate tool, offering the perfect combination of rugged reliability and advanced technology. Experience the continuing evolution of commercial fishing technology with Furuno's NavNet TZtouchXL. For more information, visit www.NavNet.com, or to learn more about Furuno's complete line of Marine Electronics, contact: Furuno U.S.A., 4400 N.W. Pacific Rim Blvd., Camas, WA 98607, or visit their website at www.FurunoUSA.com.