

FURUNO

All-New CSH10 360-Degree Omni Scanning Sonar Is A Sportfishing Captain's Dream Machine!

October 30, 2024

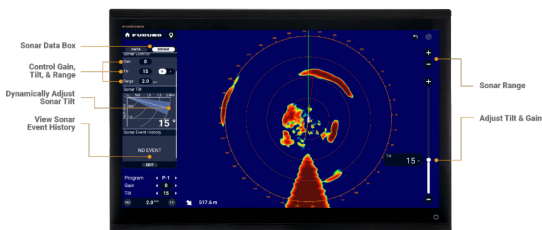
Camas, WA - Furuno is excited to announce the release of the CSH10, a 360-degree Full-Circle Omni Scanning Sonar designed with serious sportfishing enthusiasts in mind. Whether you're targeting prized species like marlin or seeking to bring home that big check at the next tournament, the CSH10 delivers the precision and performance you need to succeed on the water.



The CSH10 is an 83.5 kHz high-frequency Sonar with a sharp beam width, perfect for detecting schools of fish or individual pelagics near the surface and improving long-range detection. Its advanced full-circle scanning system gives anglers an edge by instantly capturing underwater conditions in all directions around the vessel.

Elevate Your Sportfishing with Advanced Features:

- **Compatible with NavNet TZtouchXL:** View and control Range, Gain, Tilt, and Event History of your CSH10 Sonar directly from your TZtouchXL MFD (software update coming Q1 2025).
- **Unique Sonar Overlay:** World's first Sonar Chart Overlay allows tracking of game fish as they work contour lines, as seen on BathyVision TZ MAPS.
- **Real-Time, Full-Circle Detection:** Unlike other Sonar types, the CSH10 can scan 360 degrees around your boat, delivering immediate insights into fish locations and underwater structure, ensuring you're always on top of the action.
- **Beam Stabilization in Rough Waters:** Even in choppy seas, Furuno's unique beam stabilization technology ensures clear and stable images, giving you confidence that your Sonar will deliver accurate information no matter the conditions.
- **Target Lock & Fish Quantity Mark:** Lock onto fast-moving schools or fixed targets with the Target Lock function, and track fish schools with Fish Quantity Mark, which calculates the size, distance, and depth of the school for efficient targeting.
- **Improved Image Clarity & Range:** The CSH10 features a color palette that is twice as rich (from 16 to 32 colors) and with clearer resolution, making it easier to distinguish between fish and underwater terrain. With detection ranges extending up to 900 meters, you'll have a clear picture of what's happening below the surface.
- **Compact, Intuitive Controls:** The new control unit is compact and designed with user-friendly features like the RotoKey™ and trackball for smooth, responsive operation. Wireless remote control allows you to adjust settings from anywhere on the boat, so you can focus on the catch.



Control your CSH10 directly from TZtouchXL with Range Up/Down Buttons & Gain/Tilt Slider Bar.

Edge-Swipe from the left to display the Sonar Data Box to view the Sonar tilt angle & Sonar Event History.

The CSH10 brings sportfishing to a whole new level with enhanced detection, ease of use, and rugged durability. Whether you're chasing trophy fish or just out for a weekend excursion, this Sonar gives you the tools to make every trip a success.

Furuno is the world leader in marine electronics, providing innovative solutions for the fishing, commercial, and recreational marine industries for over 70 years. For more information on the Furuno CSH10 and how it can optimize your fishing adventures, visit their website at www.FurunoUSA.com. To find a Furuno dealer near you, [visit the Dealer Locator on the Furuno USA website](#).