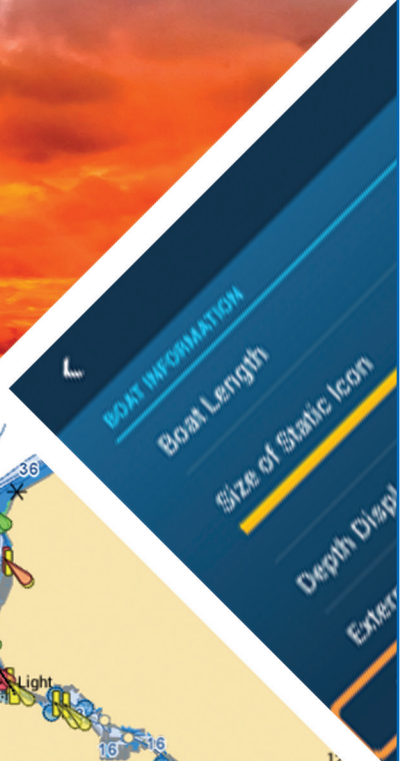
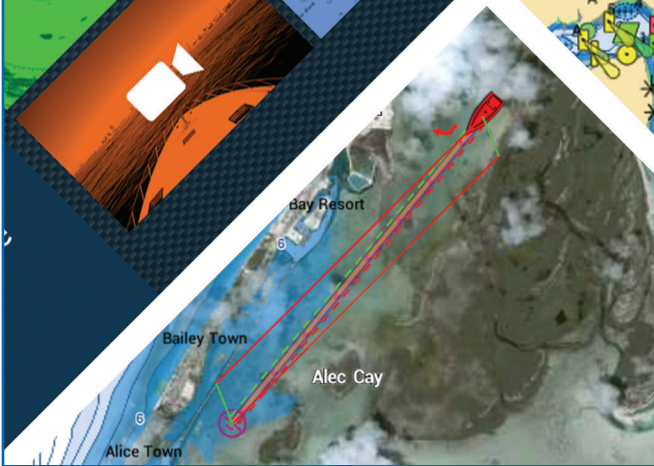


Setting Keel Draft
and Transducer Draft

NAVnet

TZ2 touch TZ3 touch



FURUNO

Selecting Your Depth Reference:

You have two options as far as a depth reference. You can choose to measure depth from Under Sea Level or from Under Keel.

Menu -> Initial Setup -> Boat Information -> Depth Display

Depth Under Keel

3.7^(K) ft LF

Depth Under Sea Level

4.1^(S) ft LF

3.7^(K) ft LF

Setting a Transducer Draft for a Network Sounder VS. Setting External Transducer Draft for a NMEA2000 Sensor:

For Network Sounder

Transducer Draft

Keel Draft

Menu -> Sounder -> Sounder Initial Setup

For NMEA2K Depth Sensor

Keel Draft for Both

Menu -> Initial Setup -> Boat Information