



Model:

TZT9F

TZT12F

TZT16F

TZT19F

Customizing TZtouch3 Startup Wallpaper

INDEX

1. **Your Own Startup Wallpaper**
2. **Preparation**
3. **Procedures**
4. **Removing Loaded Wallpaper**
5. **Notes and Recommendations**

1. Your Own Startup Wallpaper

TZT9F/12F/16F/19F v2.01 can display a customized wallpaper image during startup. An image from boats, photos, and other unique images can be loaded on the MFD as the startup screen.

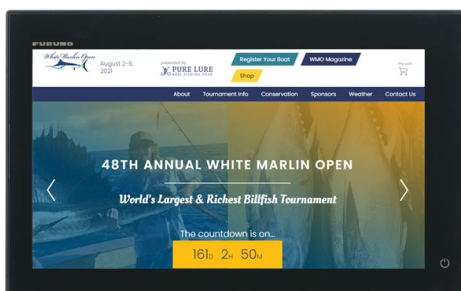
Case 1 – Boat Builders



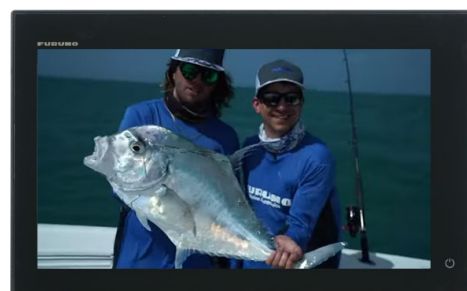
Case 2 – Fishing and Sailing Teams



Case 3 – Events



Case 4 – Memories



This document describes the procedures on how to load the wallpaper with some notes and recommendations.

2. Preparation

(1) Wallpaper image

- ✚ **PNG format**
- ✚ **Max. 10 MB**
- ✚ No file name requirement
- ✚ Other formats such as JPEG or BMP not supported
- ✚ No transparent background image (See [Section 5](#) for a note)

(2) USB jump drive

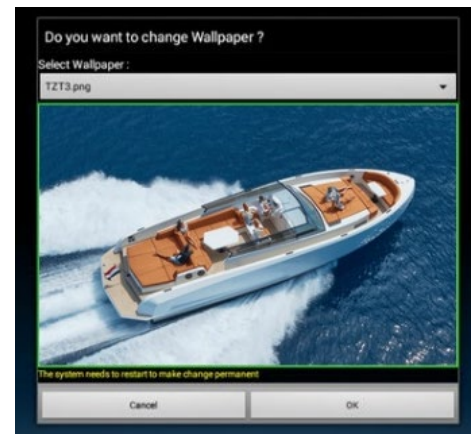
3. Procedures

- (1) Create a folder named [**TZTCustomSplashScreen**] and enclose the prepared PNG photo file(s). Multiple files can be enclosed in the folder.
- (2) Save the folder to the root of USB jump drive.
Directory: x:TZTCustomSplashScreenxxx.png
("X" for USB jump drive and "xxx.png" for photo)
- (3) Insert the USB to the TZT9F/12F/16F/19F USB port.
- (4) Turn the power on.
- (5) The following selection window will appear. In [Select image:], (pull-down menu), select one of the files to be loaded and tap [**OK**].

Note:

Appearance of wallpaper at startup is shown on the preview. (See [Section 5](#) for a note on mismatched aspect ratio.)

- (6) The display will restart. After the FURUNO logo appears, remove the USB jump drive from the USB port.



Note:

If the application startup process runs before the USB is removed, the photo selection window in Step (5) will appear. Tap [Cancel] to close it and proceed.

- (7) See that the display starts up with the loaded wallpaper.

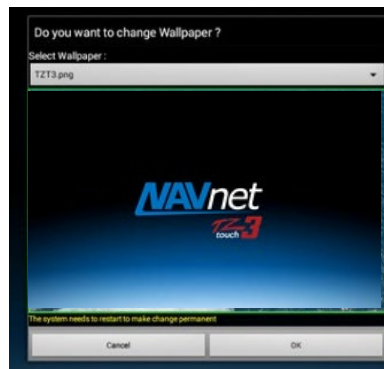
4. Removing Loaded Wallpaper

The loaded wallpaper image can be removed in the following options to show the default NavNet TZtouch3 logo screen.

Via USB

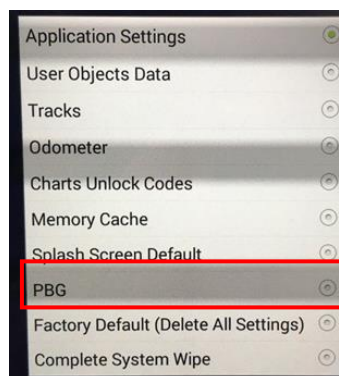
- (1) Insert the USB prepared for installation and turn the power on.
- (2) After the selection window appears, select [**Default Splash Screen**] and tap [**OK**].

The Default NavNet TZtouch3 logo screen will appear in the preview window.



Via Reset Menu (Service Menu)

In the Reset menu (Service Menu), select [**Splash Screen Default**].



5. Notes and Recommendations

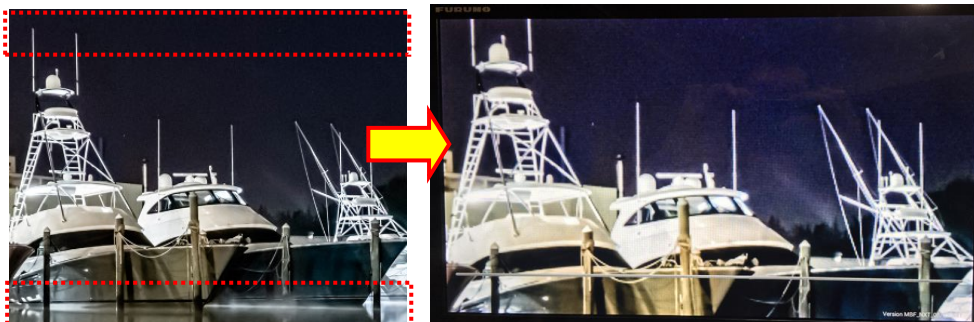
- (1) While the display starts up, the application items are loaded in the background. If the loaded wallpaper has the transparent background image, the loading images will appear at the transparent area. Make sure to prepare images with non-transparent background.

E.g. Transparent Background – Part of loading application appeared



- (2) If the aspect ratio of loaded wallpaper does not match with the one on the display, either sides or bottom/top will be removed to fit in the installed screen. In the following example, the square image is fit on the TZT16F by eliminating the top and bottom areas.

E.g. 4:3 image scaled on TZT16F



--- END ---

- All brand and product names are registered trademarks, or service marks of their respective holders.