

122836 Yamaha Helm Master EX Compatibility For TZT16F and TZT19F

The new "Helm Master EX electric steering system" (HM EX) from Yamaha was integrated into the UI of TZT3 with v2 software.

Yamaha's "Helm Master EX electric steering system" is a fully integrated boat control system from Yamaha that allows seamless control of the ship when navigating.

The system integrates a Yamaha autopilot, control joystick, throttle control, wireless key fob and more.

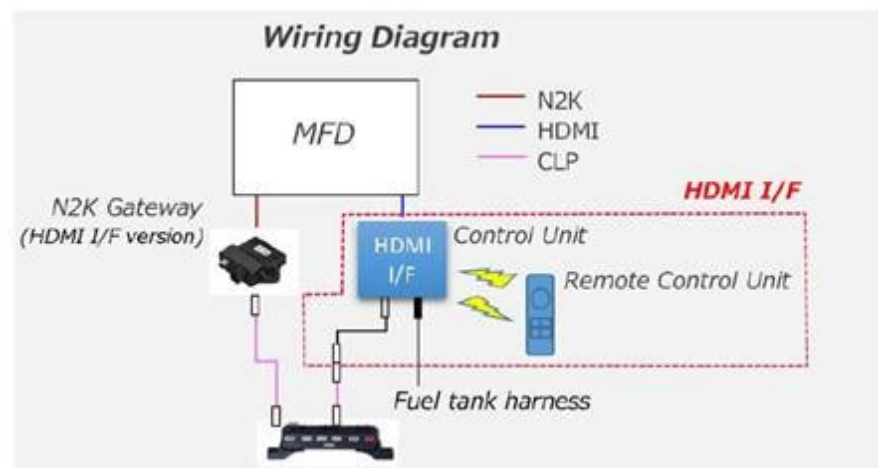
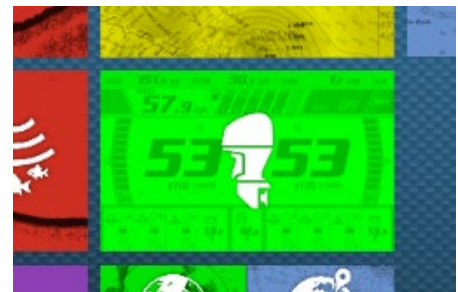
All these components together enable fine control of the ship for cruising, fishing, or docking, and integrate automated maneuvers such as virtual anchor, drift control, heading hold etc.

Please visit the [Yamaha website](http://www.yamaha.com) for more details:
Gateway: 6YG-8A2D0-11 (NMEA 2000 Gateway[6YG])
HDMI Box: 6YM-8A201-01 (MFDI Unit/Remote Controller)

The TZT3 integration allows displaying Yamaha engine details on a dedicated display.

Note:

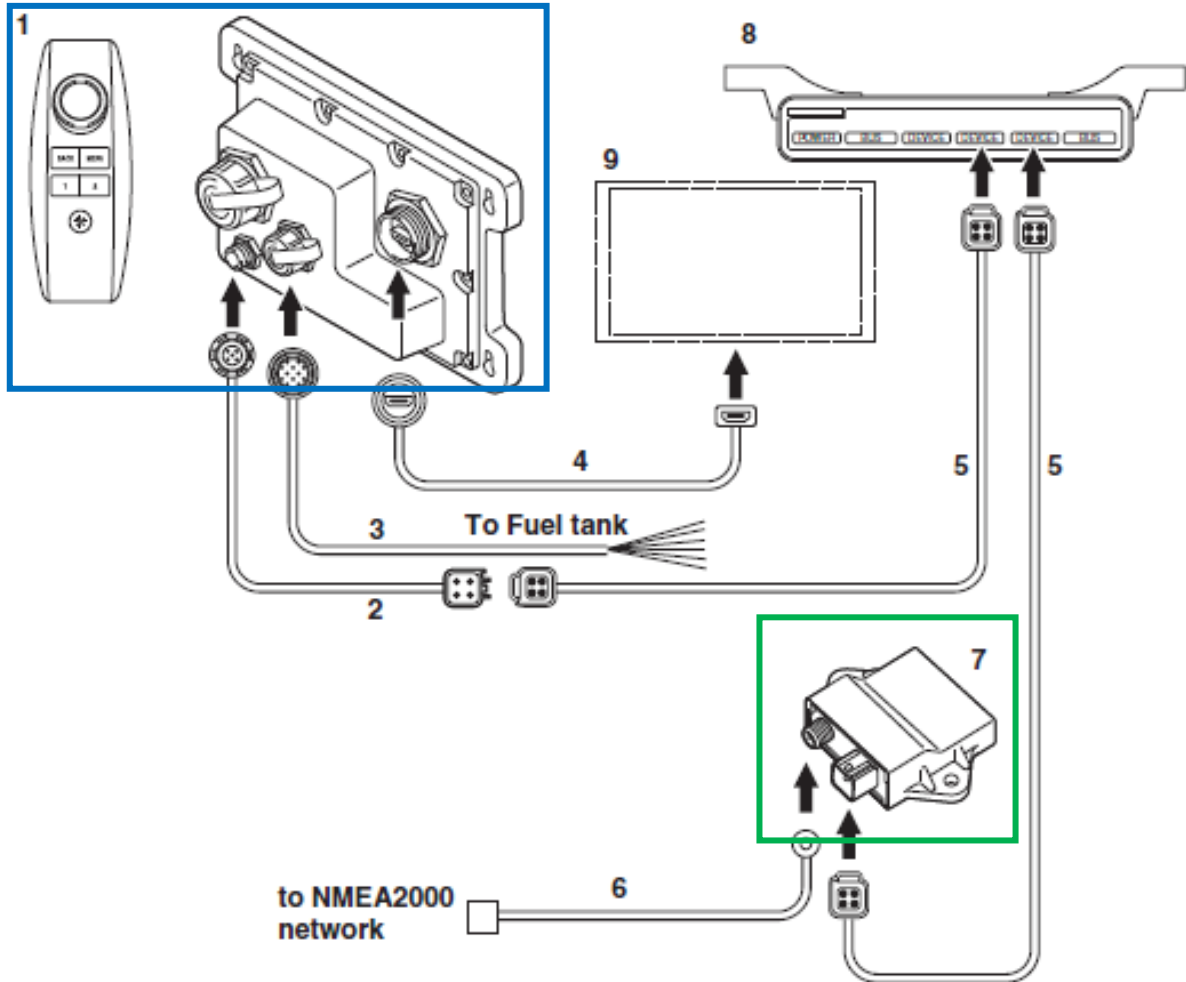
- The HM EX system must be connected to the HDMI input of TZT3 – available for TZT16F and TZT19F.
- The video feed is "read-only" and cannot be controlled from TZT3.



See Next Page for more information

Install the MFD Interface type-2

1. Connect the MFD Interface type-2.



No	Part name	Q'ty	Part No	Remarks
1	MFDI unit / Remote controller	1	6YM-8A201-01	Pairing is complete
2	Conversion harness	1	6YM-83553-10	
3	Wire lead	1	6YM-8356N-00	
4	HDMI cable	1	6YM-8533A-00	
5	6ft pigtail bus	2	6Y8-82521-31	
6	NMEA harness	1	6YG-82521-00	
7	NMEA2000 Gateway (6YG)	1	6YG-8A2D0-11	
8	Multi-hub	1	6Y8-81920-01	
9	Compatible MFD	1		Not included