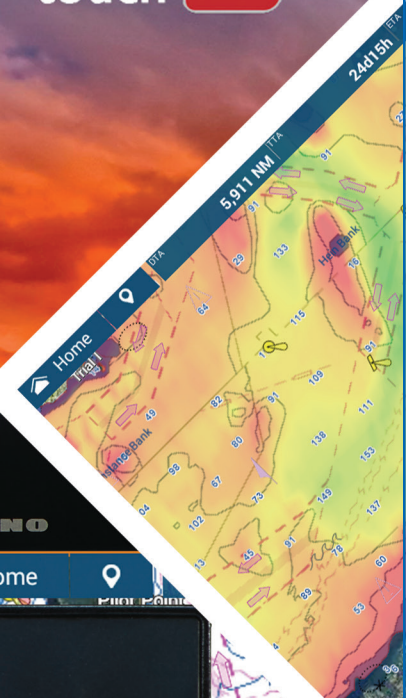


# Compatibility Guide

# NAVnet

## TZ3 touch



FURUNO

Home



# FURUNO

## Previous NavNet MFD Series

NavNet 3D and NavNet TZtouch3 are not compatible. Note TZtouch2 MFDs with version 7 software is compatible with TZtouch3 \*.

NavNet MFD Series	NavNet 3D	TZtouch	TZtouch2
TZtouch3	✗	✗	✓ *

## Network Sounders

BBFF1 and BBFF3 are not compatible. DFF1, BBDS1, DFF3, DFF3D, and DFF1-UHD are compatible.

Network Sounders	BBFF1	BBFF3	DFF1	BBDS1	DFF3	DFF1-UHD	DFF3-3D
TZtouch3	✗	✗	✓	✓	✓	✓	✓

## Weather

Sirius weather receivers, BBWX1 and BBWX2 are not compatible. BBWX3 and BBWX4 are compatible. FAX30 HF weather receiver is compatible.

Weather Module	BBWX1	BBWX2	BBWX3	BBWX4	FAX30
TZtouch3	✗	✗	✓	✓	✓

## DRS Radars

Currently almost all DRS radars are compatible with TZtouch3 (Only the DRS4W is not). Note that original DRS Radars will require an appropriate PSU (48vdc power supply or DC to DC converter). The DRS2D and DRS4D will require PSU017 or PSU012. The DRS6A and DRS12A will require the PSU012. The DRS25A will require a PSU013 (supplied with DRS25A). Note all original DRS's need to be updated to at least version 1.16\*. PSU012 and PSU013 require jumper in J7 to bypass Power Synch.

DRS Radar	DRS4W	DRS2D	DRS4D	DRS4A	DRS6A	DRS12A	DRS25A	X-CLASS	NXT
TZtouch3	✗	✓ *	✓ *	✓ *	✓ *	✓ *	✓ *	✓	✓

## AIS

FA30 and FA50 via LAN or serial via IF-NMEA2K2. FA150 serial via IF-MEA2K2. FA170 via serial or LAN. If connected via LAN change the FA170 NW protocol to NavNet in the Installation menu. FM4800 and FM4850 via NMEA2000. Note FA30, FM4800 and FM4850 are Receive Only\*

AIS	FA30	FA40	FA50	FA70	FA150	FA170	FM4800	FM4850
TZtouch3	✓ *	✓	✓	✓	✓	✓	✓ *	✓ *