



SC33

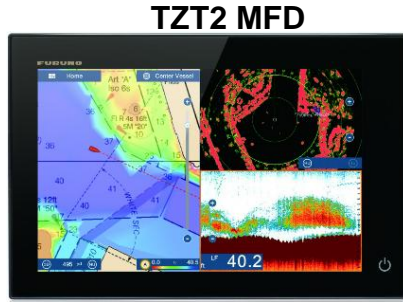
0.8 meter Pigtail Male
Fitted at Factory



SC33 Supplied Drop Cable
(6 meter)
P/N 000-194-602-10



NMEA2000 Micro Double-ended cable
Female-Male
1 meter = 001-105-750
2 meter = 001-105-760-10
6 meter = 001-105-770-10



TGT2 MFD

12-24 VDC



Supply 12 VDC Power to
Small NMEA2000 Bus Via
Multi Cable (J107)
WHT/RED +
WHT/BLK -



NMEA2000 Terminator Male
AIR-335-791



NMEA2000 "T"
AIR-052-531



NMEA2000 Micro Double-ended cable
Female-Male
1 meter = 001-105-750
2 meter = 001-105-760-10
6 meter = 001-105-770-10
10 meter = 001-105-850
20 meter = 001-105-860

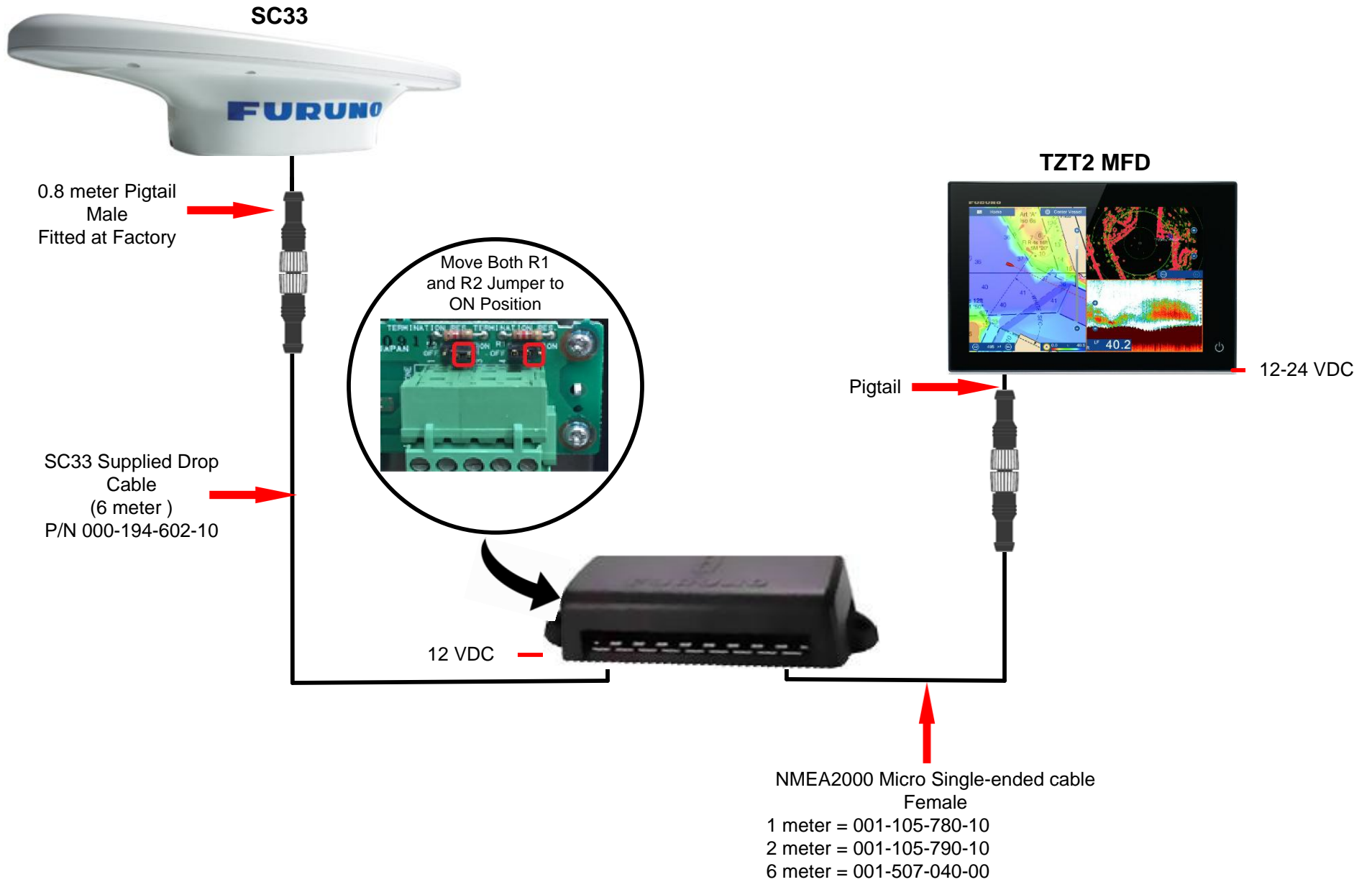


NMEA2000 "T"
AIR-052-531



NMEA2000 Terminator Male
AIR-335-791





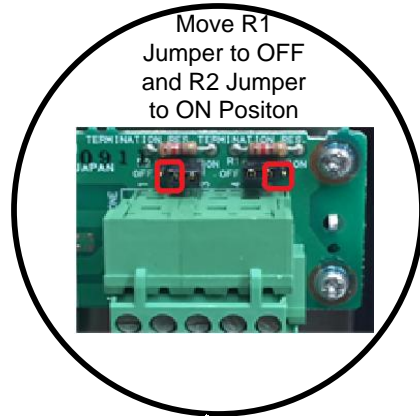


SC33

0.8 meter Pigtail
Male
Fitted at Factory



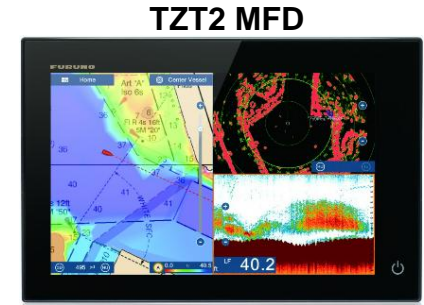
SC33 Optional Backbone
Cable Single Ended
Female
15 meter 001-533-090-00
30 meter 001-506-830-00



12 VDC



Pigtail



TGT2 MFD

24 VDC



NMEA2000 Micro Single-ended Cable
Female
1 meter = 001-105-780-10
2 meter = 001-105-790-10
6 meter = 001-507-040-00

