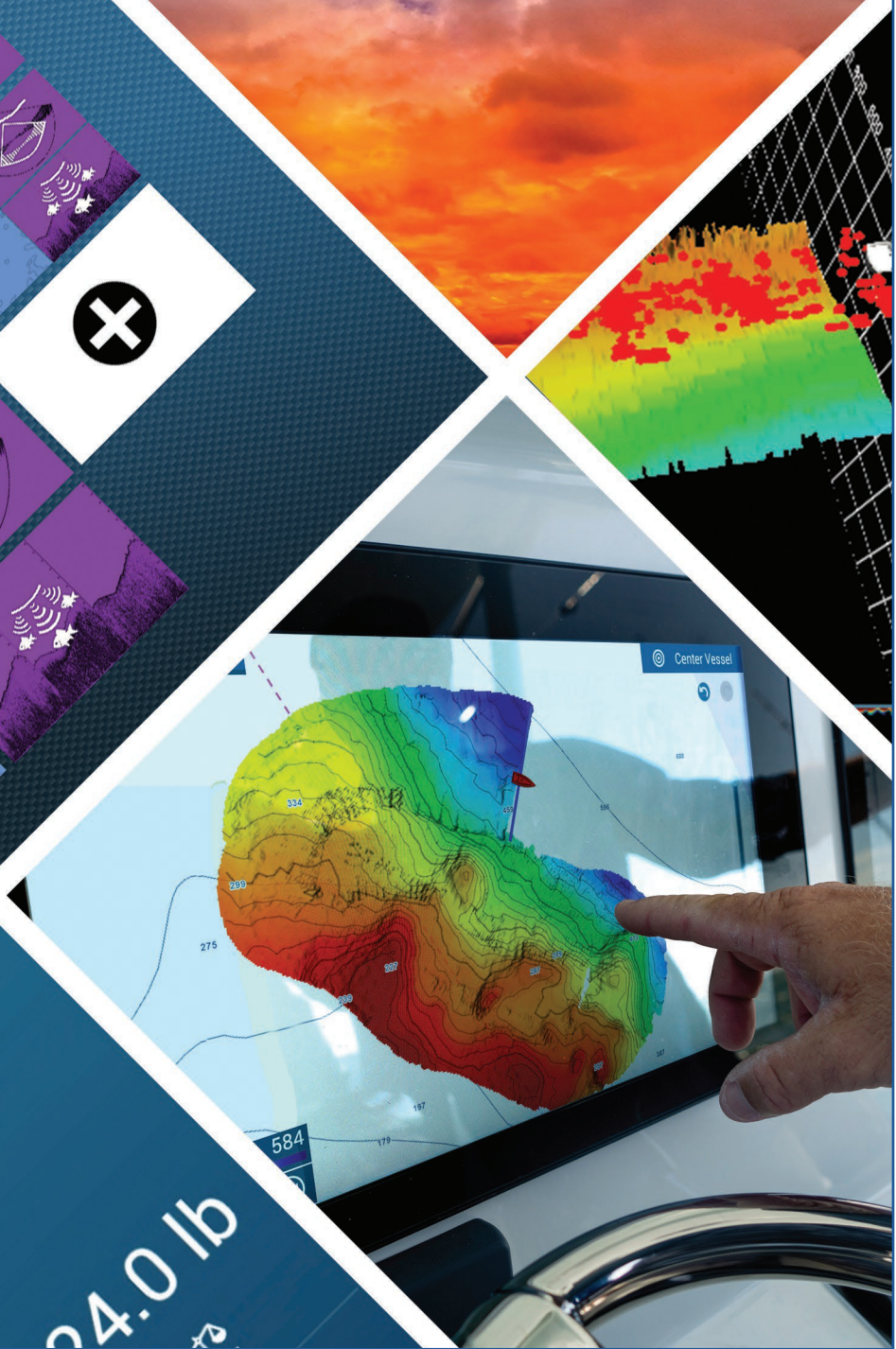


DFF3D/
DI-FFAMP
Key Pulse Kit Installation

NAVnet
TZ3
touch

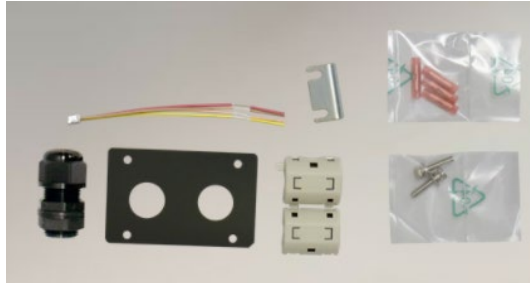


Dolphin Fish

24.0 lb

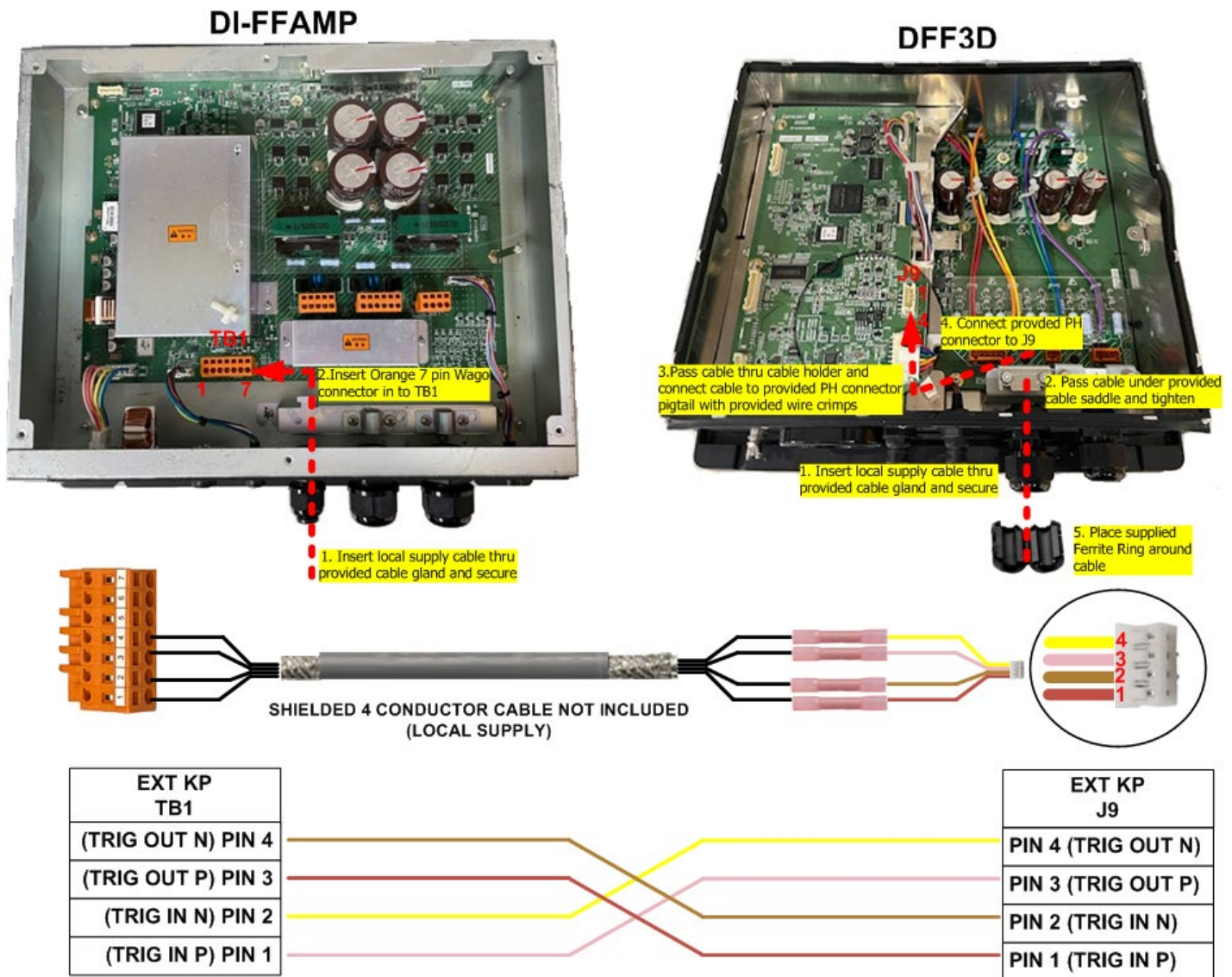
FURUNO

1. Items Supplied TX Synch Connection Kit



PN: 001-205-780-00

2. Example Connection Diagram



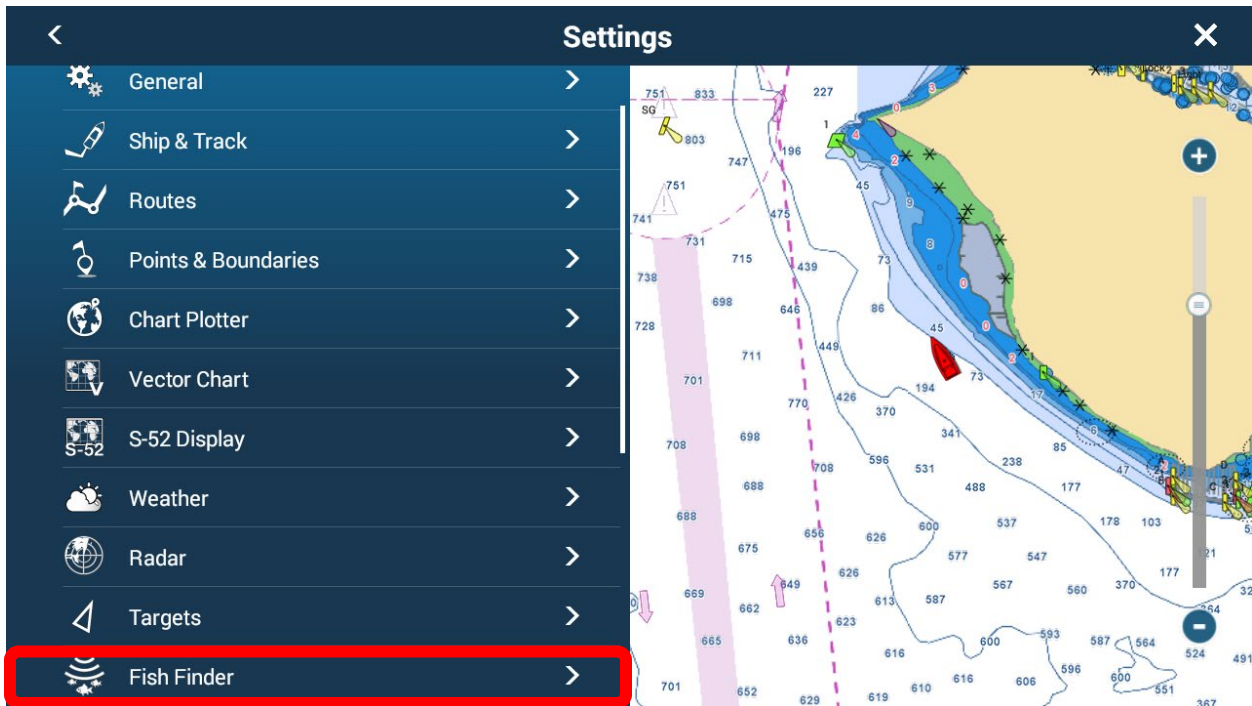
3. Setting Up TZtouch3 MFD

The following settings must be made on TZtouch3 MFD physically connected to the DI-FFAMP.

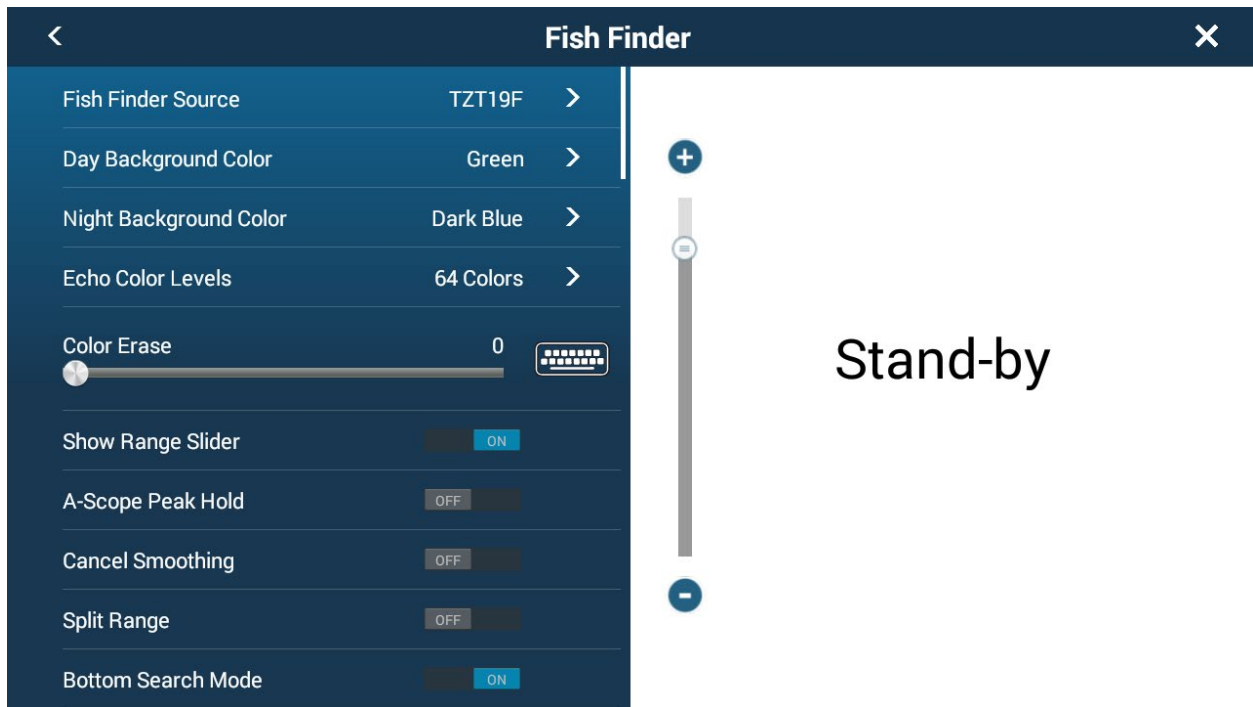
1. Select [**Settings**]



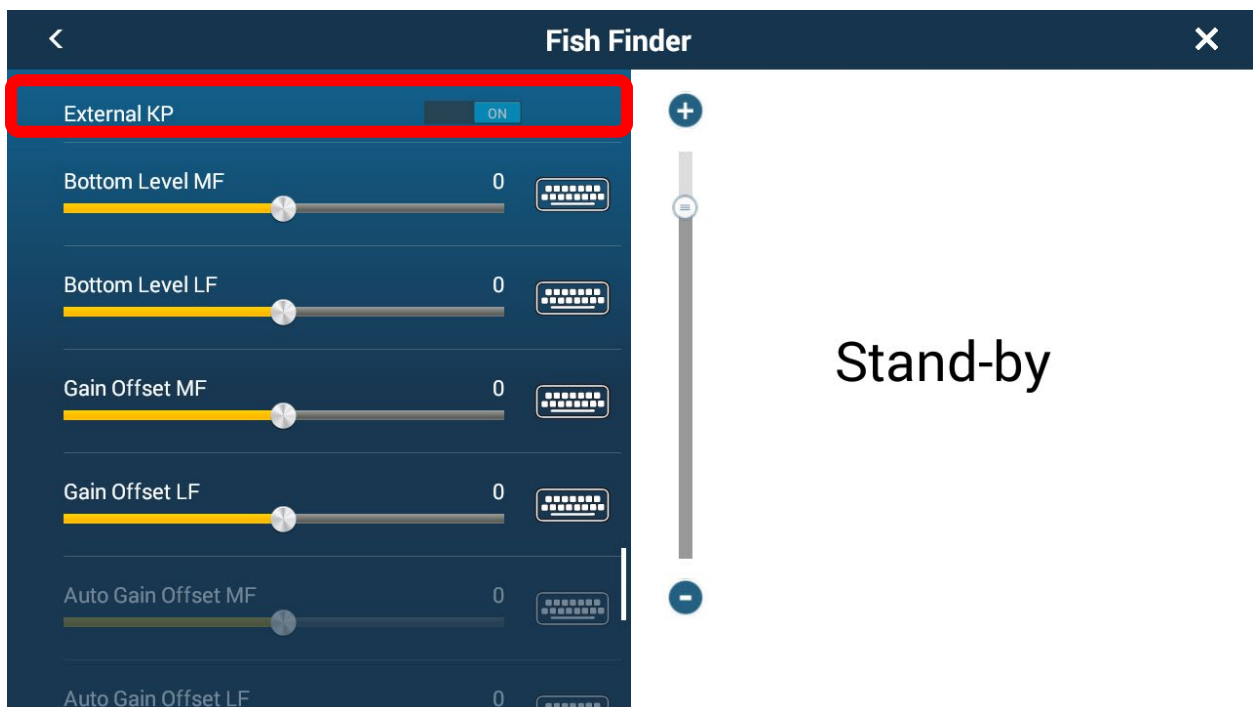
2. Select [**Fish Finder**]



3. Set [**Fish Finder Source**] to TZtouch3 MFD that is physically connected to DI-FFAMP.



4. Set [**External KP**] to **ON**



*Note: Set External KP setting to ON only for the internal/DI fish finder under fish finder menu. **DO NOT** set External KP to ON within the Multi-Beam Sonar menu. Not following this will cause the Multi-beam to stop transmitting.