

INSTRUCTION MANUAL

DATA EXTRACTION PROCEDURE

MODEL VR-3000/VR-3000S



Record of Pub Rev., Prog. No.

Pub No.	Revision No., Date of Revision	Program No. (software)	Outline of Revision
C42-00406	A Apr. 19, 2006	VR-3000 SYSTEM 2450031-01 RAP 2450026-01	1 st production printing.

Procedure to extract stored data from removable hard disk

Parts and equipment needed

- PC (OS: Windows 2000/XP, I/F: IEEE1394 x1, Ethernet x1, Memory: minimum 256MB, HDD: minimum 10GB, Software: Internet Explorer 6.0, Acrobat Reader 7.0, DirectX 9.0 or higher)
- IEEE1394 cable(4P-6P)
- Ethernet cross cable

1. Setting up the PC

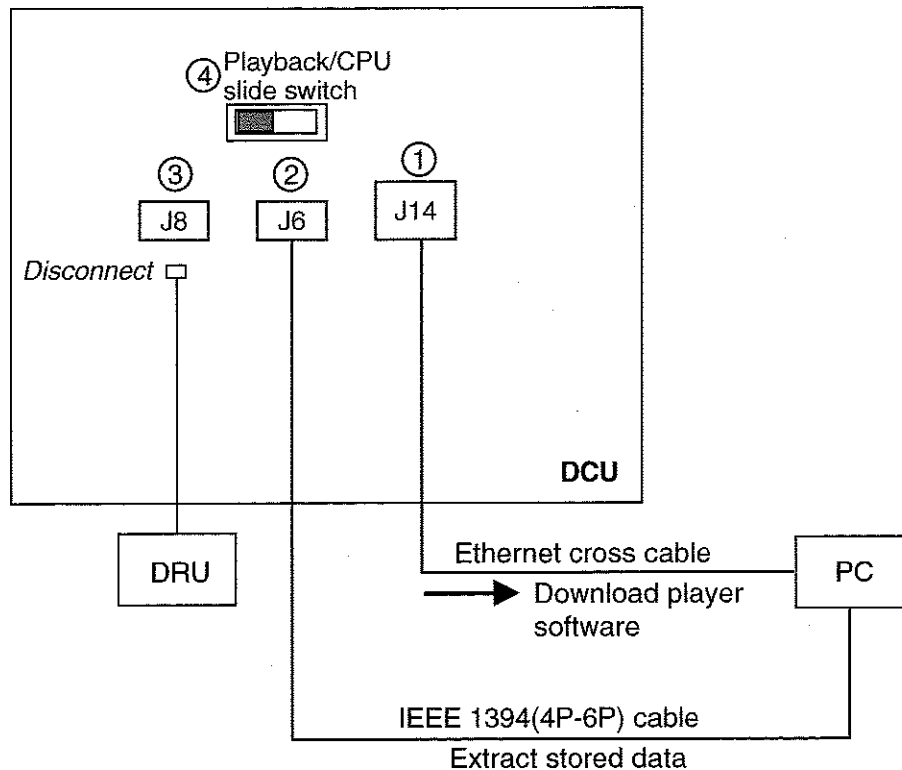
Set the IP address and subnet mask on the PC as below. The IP address of VR-3000 is 10.0.0.100.

1. Click Start, Settings, Control Panel and Network and Dial-up Connections.
2. Click Local Area Network, Properties and Internet Protocol (TCP/IP).
3. Click the **Properties** button.
4. Choose "Use the following address".
5. Enter IP address and subnet mask:
IP address: 10.0.0.102 or 10.0.0.99 (other than 10.0.0.100)
Subnet mask: 255.0.0.0
6. Click the **OK** button and then click it again.
7. Restart PC.

2. Connections

See the figure on the next page for connection.

1. Connect the PC to J14 (Live Player) in the DCU with an Ethernet cross cable, to download the player software.
2. Connect the PC to J6 (Playback) in the DCU with an IEEE 1394 cable (4P-6P).
3. **Fixed DRU:** At the DCU, disconnect IEEE 1394 cable between DRU and J8 at the DCU.
Free floating DRU: At the DCU, disconnect LAN cable between DRU and LAN cable connector in the DCU.
4. Set CPU/Playback slide switch in DCU to Playback position.



3. Downloading Player Software

1. Open Internet Explorer 6.0 on the PC.
2. Enter the address 10.0.0.100/player.exe. (<http://10.0.0.100/player.exe>)
3. Click the Save button on the PC screen, select the directory, and hit the Enter key.

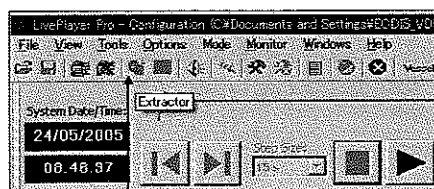
4. Installing Player Software

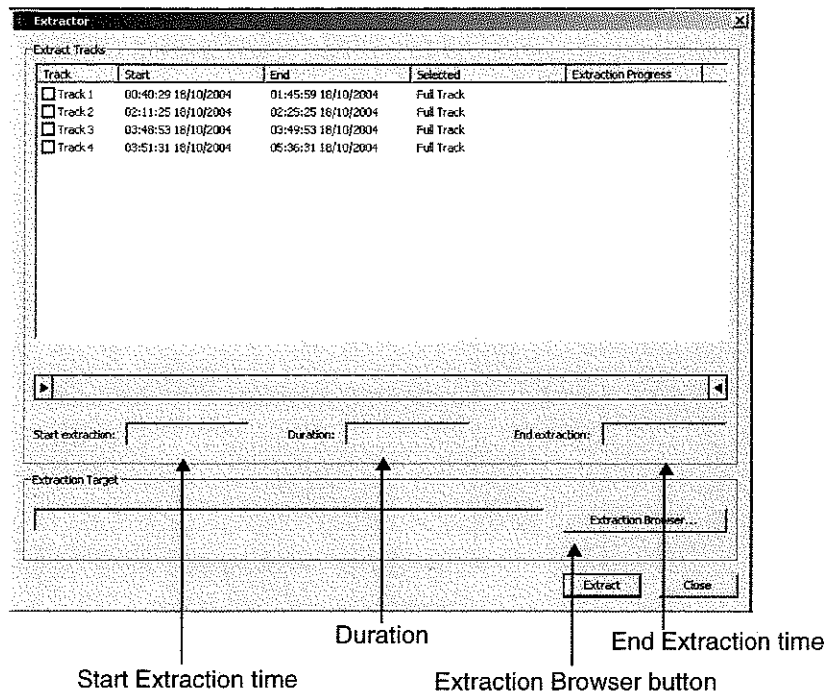
1. Double click the downloaded file player.exe. (self-extract file).
2. Double click the setup file setup.exe.
3. Install the Live Player Pro software, referring to its Operator's Manual.

5. Extracting Stored Data

Refer to Operator's Manual of the Live Player Pro.

1. Boot the Live Player Pro software.
2. Click the **Connect** button in the tool bar to show the Connect dialog box.
3. Click the **Backup** button.
4. Click the **Connect** button in the Connect dialog box.
5. Click **Extractor** button in the tool bar.





6. Click the **Extraction Browser** button to show the Extraction Browser dialog box.
7. Choose Edit and New Extraction from the menu bar on the Extraction Browser dialog box and enter a file name.
8. Click the **OK** button and the Extraction Browser dialog box disappears.
9. Click the **Extract** button in the Extractor dialog box.
10. After extraction is completed, click the **OK** button followed by the **Close** button.
11. After you have finished extracting data, do the following:
 - a) Set Playback/CPU slide switch to CPU position.
 - b) Connect cable between DRU and J8 on DCU.
 - c) Disconnect cable between J14 on DCU and PC.
 - d) Disconnect cable between J6 on DCU and PC.

NOTICE
Be sure to return the Playback/CPU slide switch to the CPU position.
Data will not be recorded if the slide switch is left in the Playback position.

6. Playing Back Data

Refer to Operator's Manual of the Live Player.

1. Click **Connect** button in tool bar to show the Connect dialog box.
2. Click the **Extraction** button.
3. Click the **Extraction Browser** button on the Connect dialog box to show the Extraction Browser.
4. Choose file to replay and click the **OK** button.
5. Click the **Connect** button on the Connect dialog box.
6. Click the **Start Playing** button, and the data is displayed in the data window.

