

VI-CSH8L
IP Video Stream
Encoder Kit

CSH8LMK2
360° OMNI SONAR

NAVnet

TZ3
touch



FURUNO

VI-CSH8L

VGA to H.264 Video Encoder Kit

Kit consists of the following:

- 1ea Pre-configured VGA to H.264 Encoder
- 1ea AC-DC adapter for Encoder
- 1ea 3ft VGA cable
- 1ea 14ft CAT6 Ethernet cable
- 1ea Instruction guide



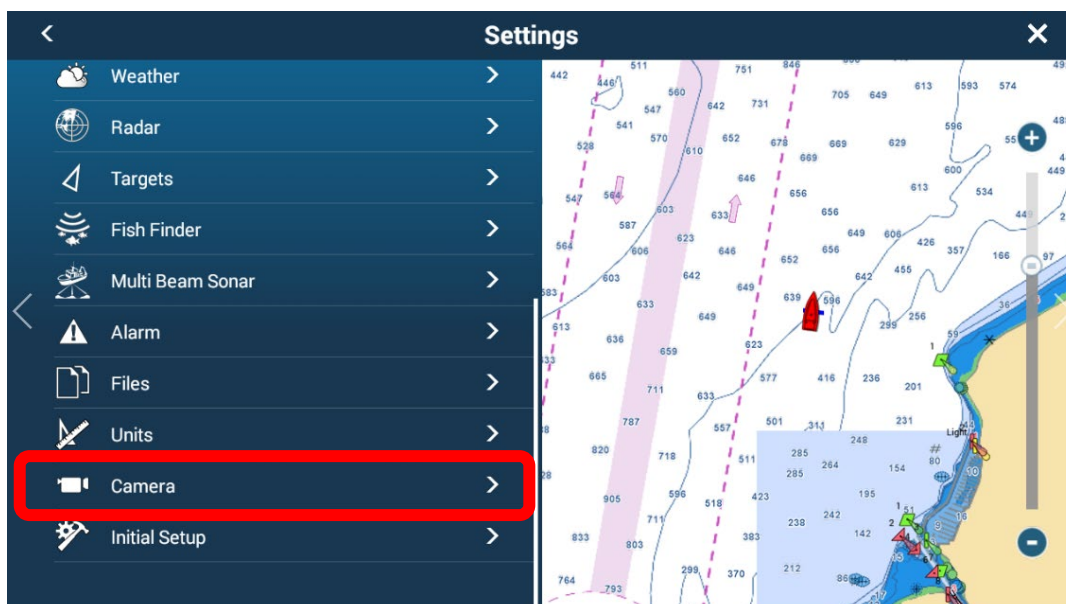
Setting Up TZT3 Sonar Video Stream Interface

Once you have installed the Sonar Video Stream Interface Kit (VI-CSH8L) as shown on the illustration found at the end of the document you are now ready to setup the TZtouch3 MFDs on the Network. Also note that the VI-CSH8L can be used to provide TZT3 MFDs with a video stream from **any** source that has a VGA output. The kit is not limited to just the CSH8L. For example, you can use this kit with our CH250/CH300 as long as it is installed with an IF8000/IF8000DS. The encoder provided with this Sonar Video Stream Interface Kit will take a single VGA input (max 1920x1080P) from any source, convert to H.264 Network stream utilizing RTSP (Real Time Stream Protocol). If you have more than one TZtouch3 MFD on the Network and wish to access the Sonar Video Stream on multiple MFDs, simply perform the setup procedure described in this document on ALL TZtouch3 MFDs.

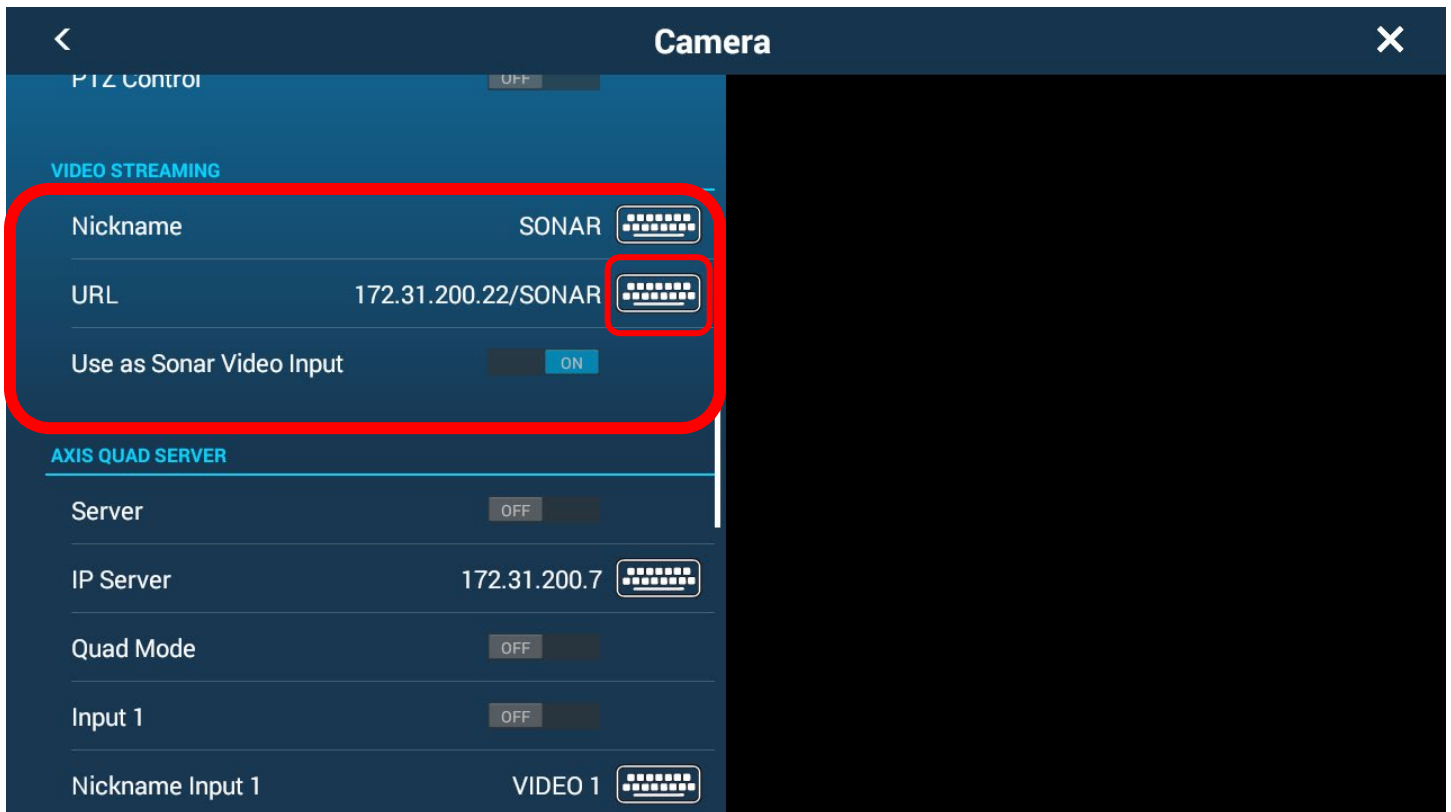
1. Select **Settings** for the Homepage



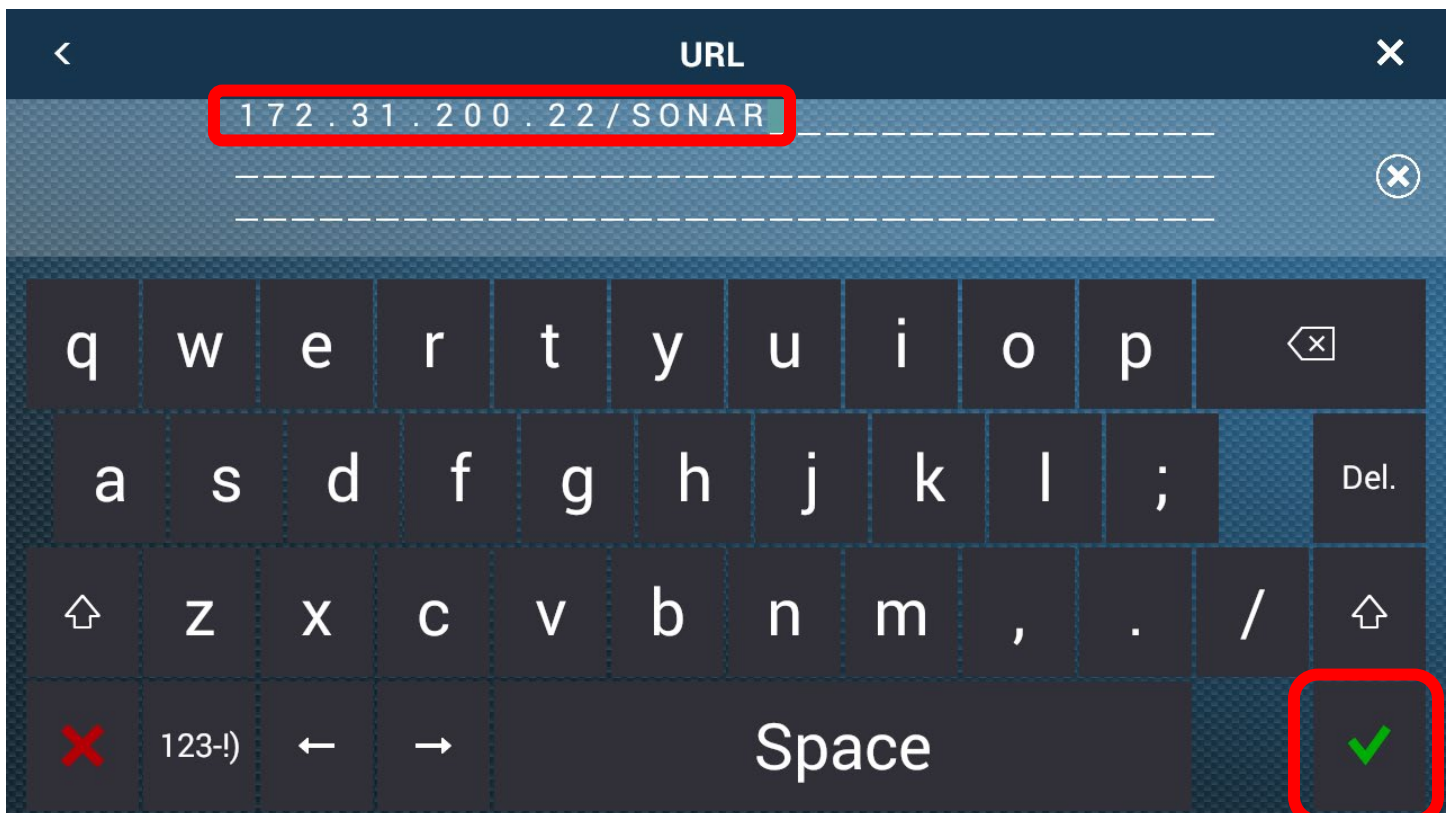
2. Select **Camera**



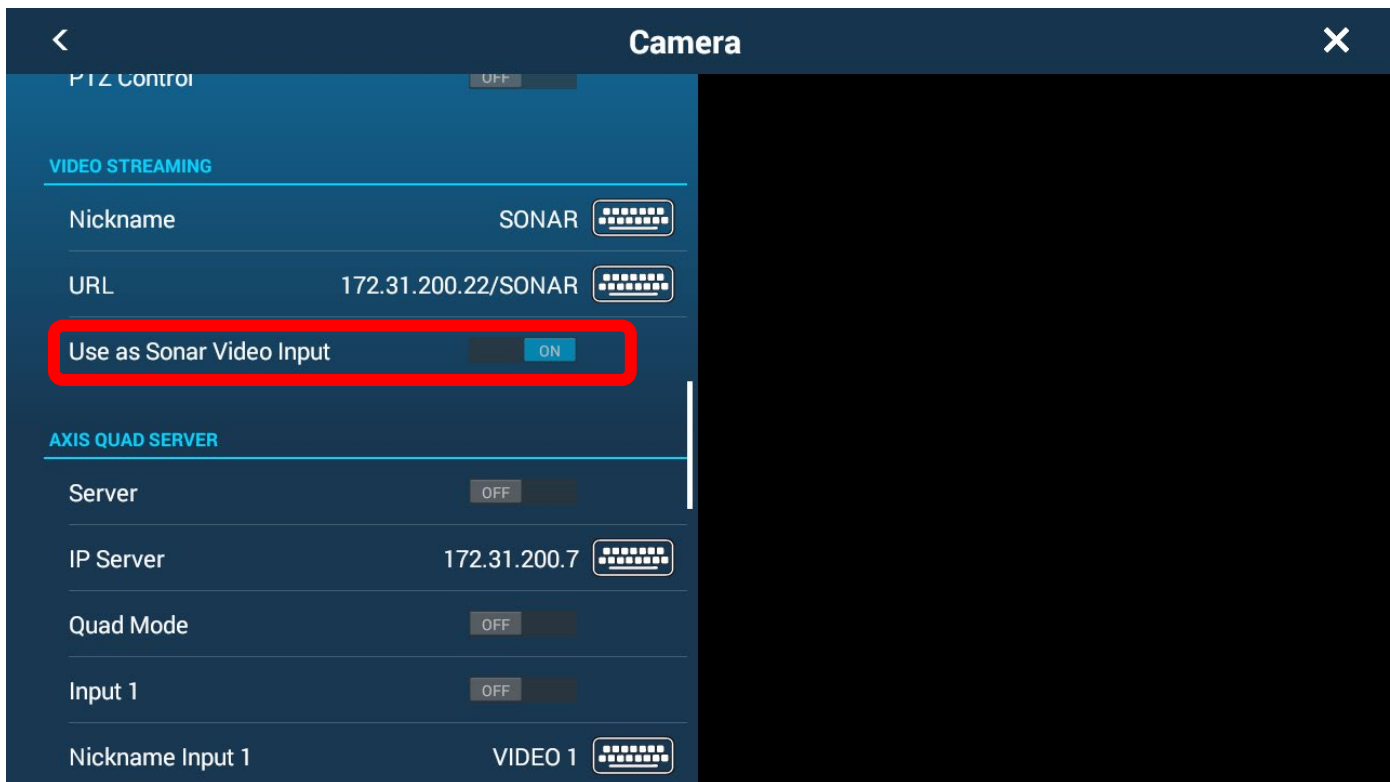
3. Then scroll down until the "Video Steaming" menu is displayed. Tap on the Keyboard Icon for **URL** and enter encoder Mainstream URL exactly as shown below. SONAR in the URL is case sensitive. Turn on "Use as Sonar Video Input". You can change the Nickname if you like, or leave it as is.



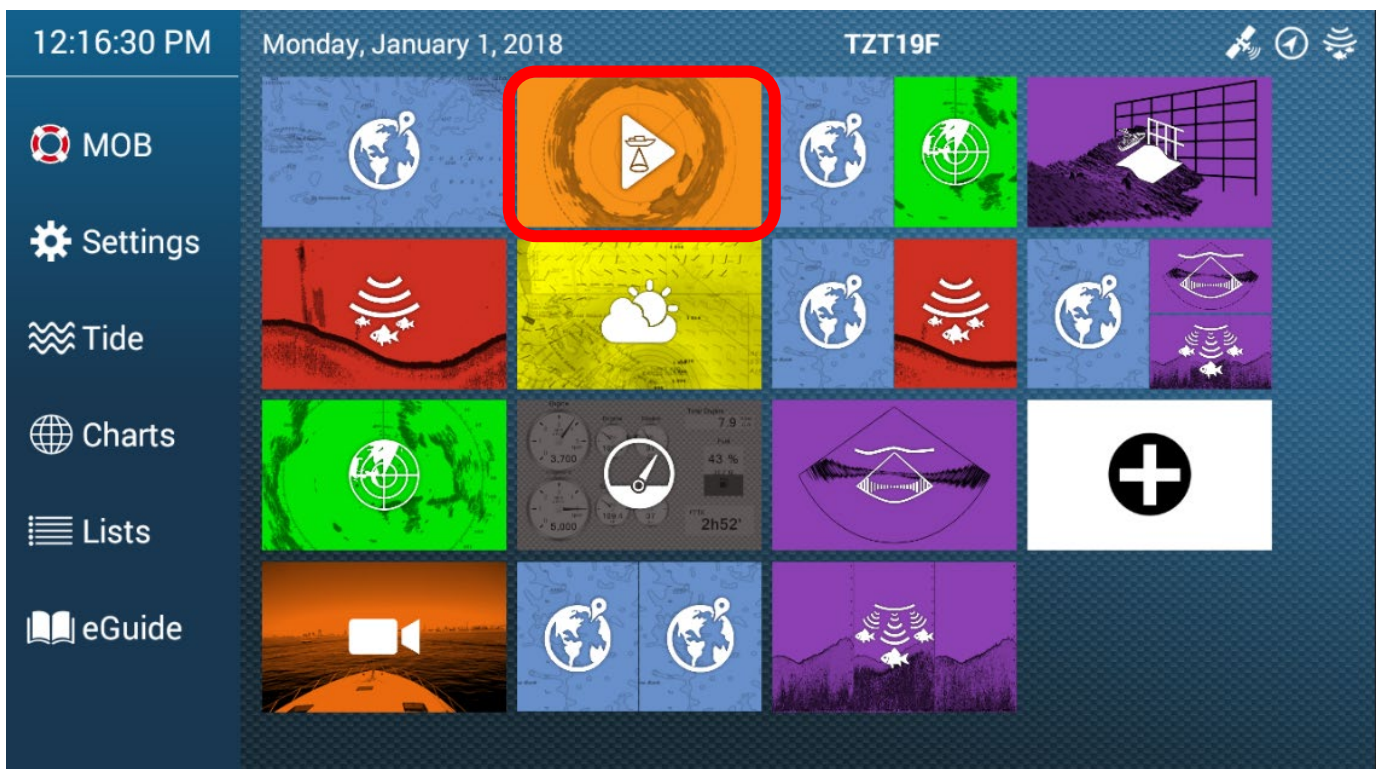
Enter **172.31.200.22/SONAR** in URL field then select Green Check Mark  to save. Make sure SONAR is capitalized.



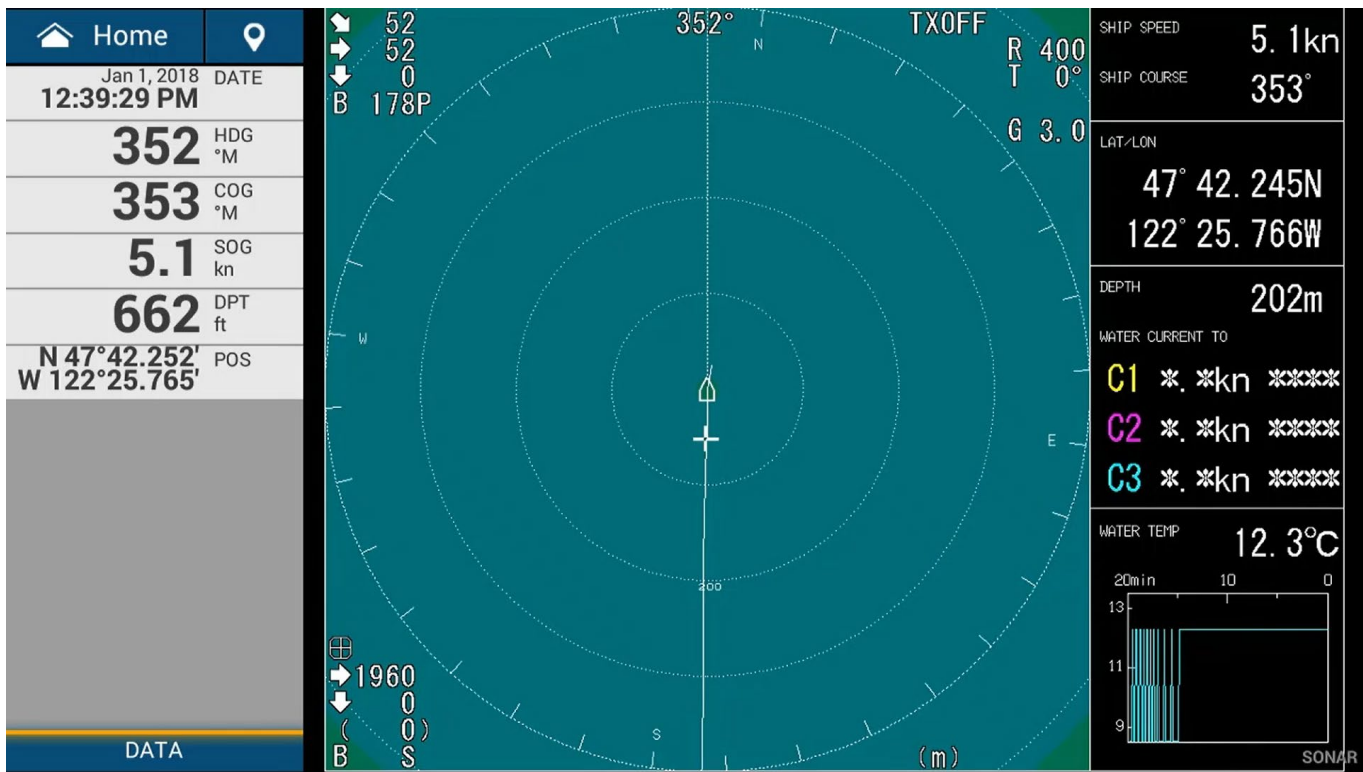
4. Toggle **Use as Sonar Video Input** ON. Turning this on allows the use of the TZT3 data box to be shown on the same display as the CSH8L video.



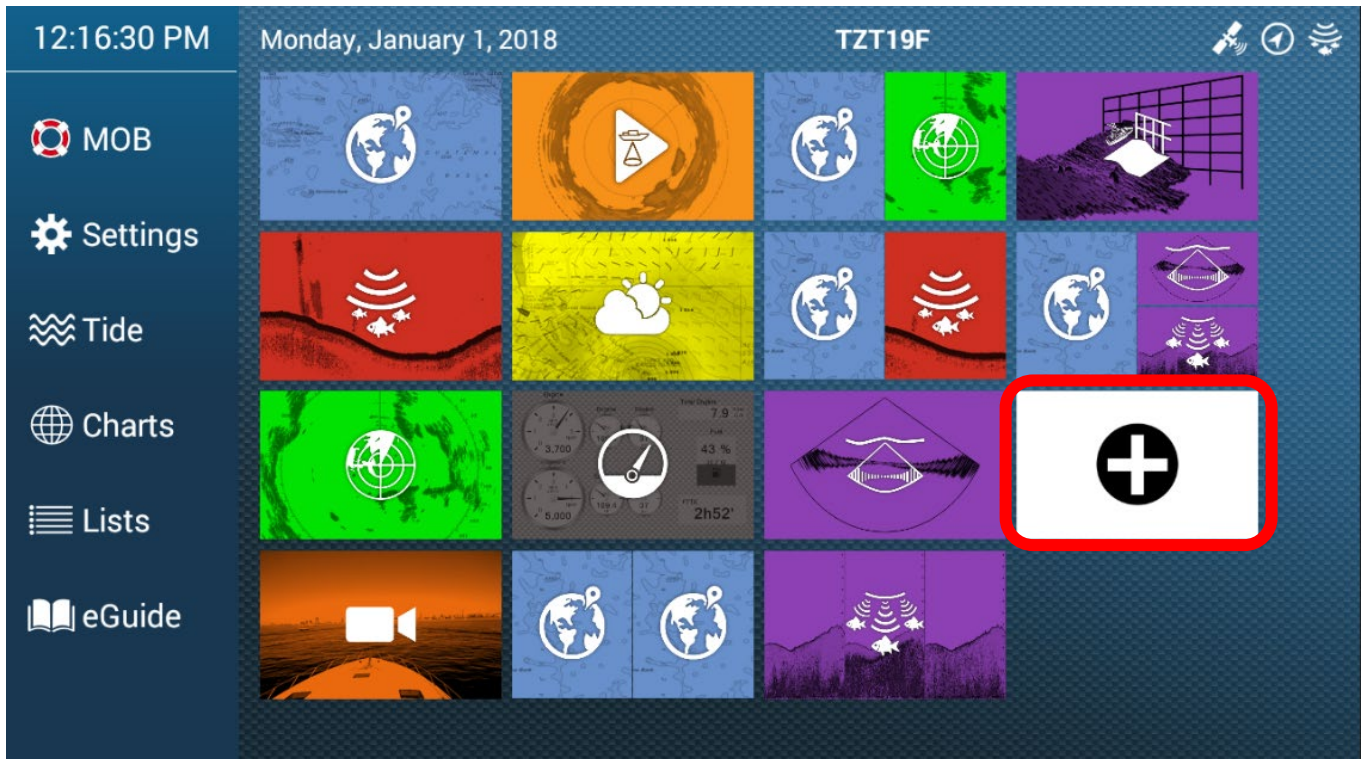
5. Exit out of the settings menu and display the Homepage. You will now notice that you have a new Video Streaming Icon. The icon below is for a full screen. You can also tap on the (+) icon to add a custom page with Sonar Video Stream as a quarter screen. Half screen video is not available.




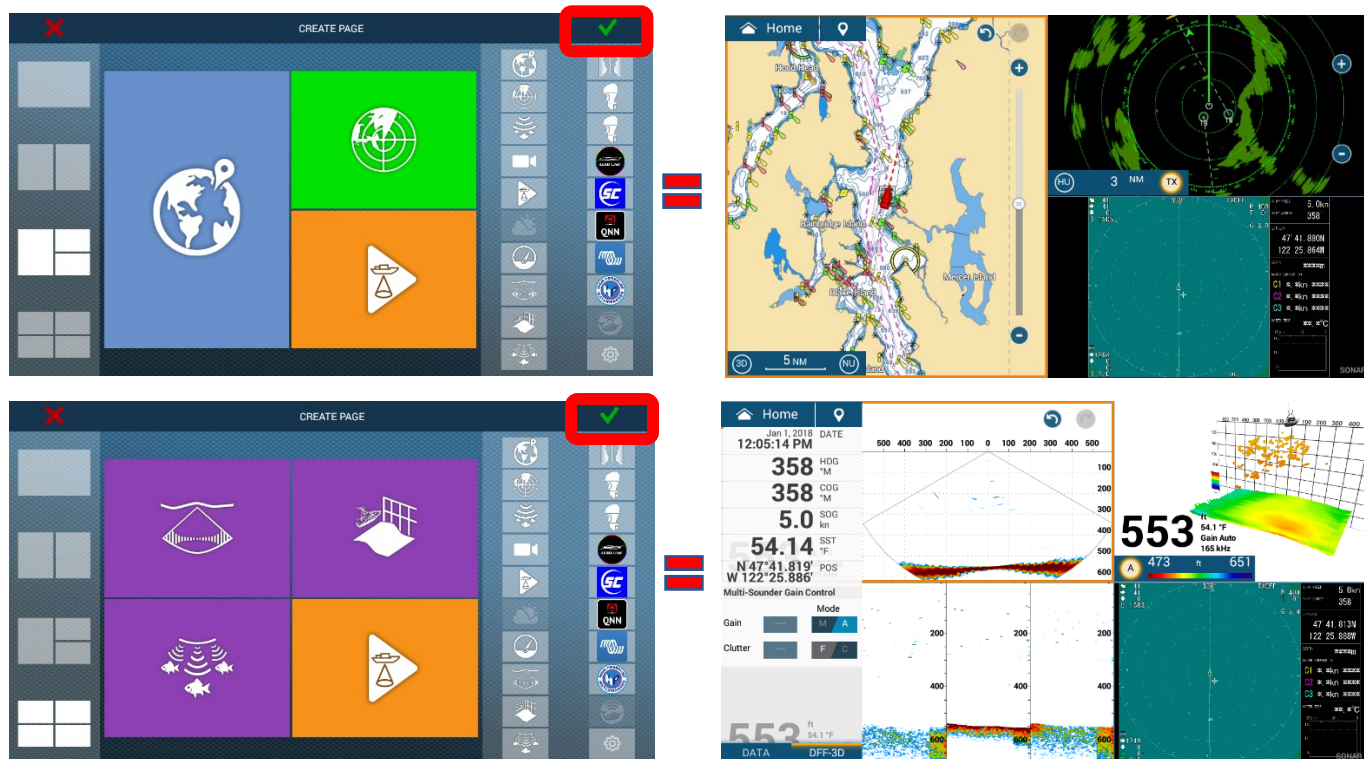
An example of Fullscreen Sonar video stream page.



Choose the (+) to add/create a custom page.



Tap on desired page layout (left hand side) then simply drag and drop applicable display to each partition. Tap on Green Check Mark  to save. As a helpful tip, we recommend you set up a one of the available Function Gestures options, found in the General Menu as Full Screen to quickly switch from Quarter screen to Fullscreen and back from Fullscreen to Quarter screen.



As a reminder, if you have more than one TZtouch3 MFD on the Network and wish to access the Sonar Video Stream on multiple MFDs, simply perform the setup procedure described in this document on ALL TZtouch3 MFDs.

To convert and stream HDMI video, use part # VI-HDMI. This kit can be used to stream Furuno equipment such as the CH500/600 Sonars as well as the FCV1900 Sounder. This kit could also be used for non-Furuno HDMI video sources such as a camera, computer, or DVD player.

Don't forget to connect up the CSH8L Event out using part # **IF-NMEA2K2-8L** to a TZtouch3 or TZT2BB NMEA2000 network. This is a prewired/configured IF-NMEA2K2 NMEA0183/NMEA2000 converter with the CSH8L NMEA0183 plug already attached.