

This guide provides the basic operating procedures for this equipment. For detailed information, see the Operator's Manual on the WEB site. You can get the latest version of the manual by accessing the quick response code at the bottom of this page. Connection of sensors required.

iPhone, iPod and iPad are trademarks of Apple Inc. Android is a trademark of Google Inc. All brand and product names are trademarks, registered trademarks or service marks of their respective holders.

The screenshots used in this guide were mainly taken from the TZTL12F/TZTL15F. On-screen appearance for the TZT2BB may differ slightly, depending on the monitor used.

Operational Overview

Icon (home/displays), power switch operations

TZTL12F/TZTL15F



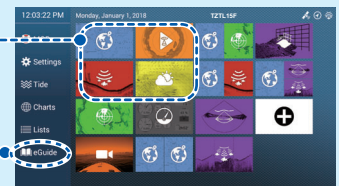
Home icon
"FURUNO" (TZT2BB only)
or "Home" indication

TZT2BB



Display icons
(max. 16 on home screen)

"eGuide" provides
an abbreviated
operator's guide.



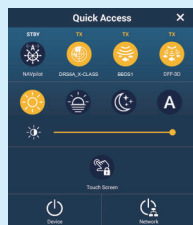
Home screen

Power off

Device: Powers off this unit.
Network: Powers off all
NavNet TZtouch series units
in network.

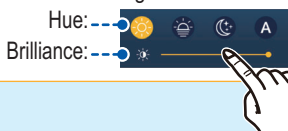
Power switch

- Turns on power.
- Shows [Quick Access] window.



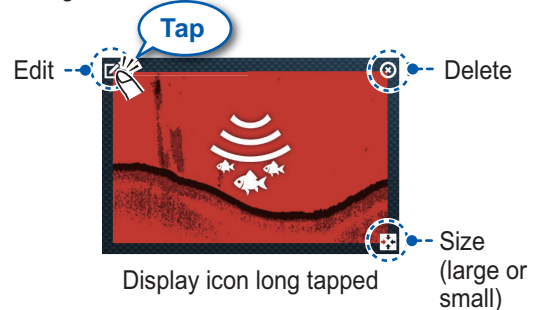
Brilliance, Hue

TZTL12F/15F: Adjust display brilliance.
TZT2BB: Adjust power lamp and key
backlight brilliance.



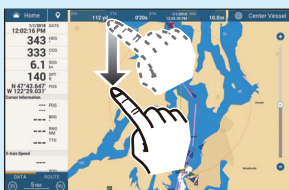
How to edit a display icon

Long tap a display icon to edit, delete, resize, or
change its location.



How to select a display

- Tap a display icon on the home screen (see illustration above).
- Tap a display icon on the Quick page.



Swipe downward from
top of display.



Quick page

Operator's Manual
Download Link



FURUNO ELECTRIC CO., LTD.

Touchscreen operations

Tap



- Select an item on a menu.
- Tap the display or an object to show the corresponding pop-up menu.

Drag, swipe



- Move the chart.
- Scroll the menu.
- Show Slide-out menu, Layers menu.

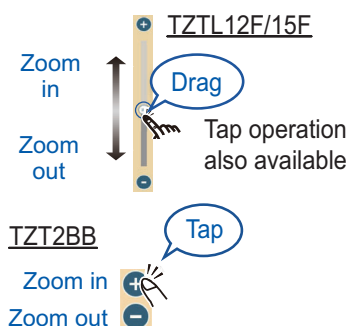
Pinch



Zoom in Zoom out

- Zoom in, zoom out the chart plotter and weather displays.
- Change the range on the radar and fish finder displays.

Slider bar



Two finger (long) tap



Do the function assigned to [Two Finger (Long) Tap Function] in the [Settings] - [General] menu.

Two finger drag



Change the viewpoint position on the 3D display.

Menu operation

Pop-up menu



Tap screen (applicable point, object, etc.)

Pop-up menu



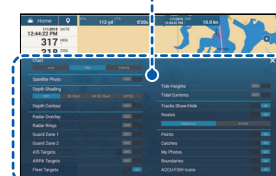
Tap the required function.
(">" indicates additional options.)

Layers menu



Swipe upward from the bottom edge.

Layers menu



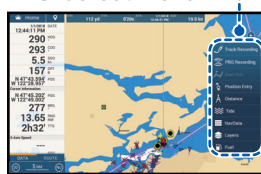
Tap the required function.

Slide-out menu



Swipe leftward from the right edge.

Slide-out menu

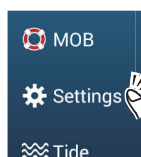


Tap the required function.
Icon color and function state
Yellow: ON, White: OFF

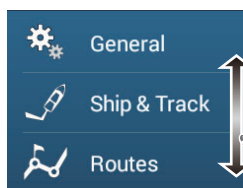
Settings menu



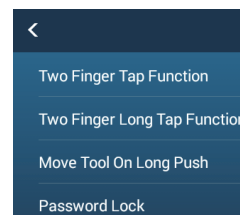
Tap the [Home] icon.



Tap [Settings].

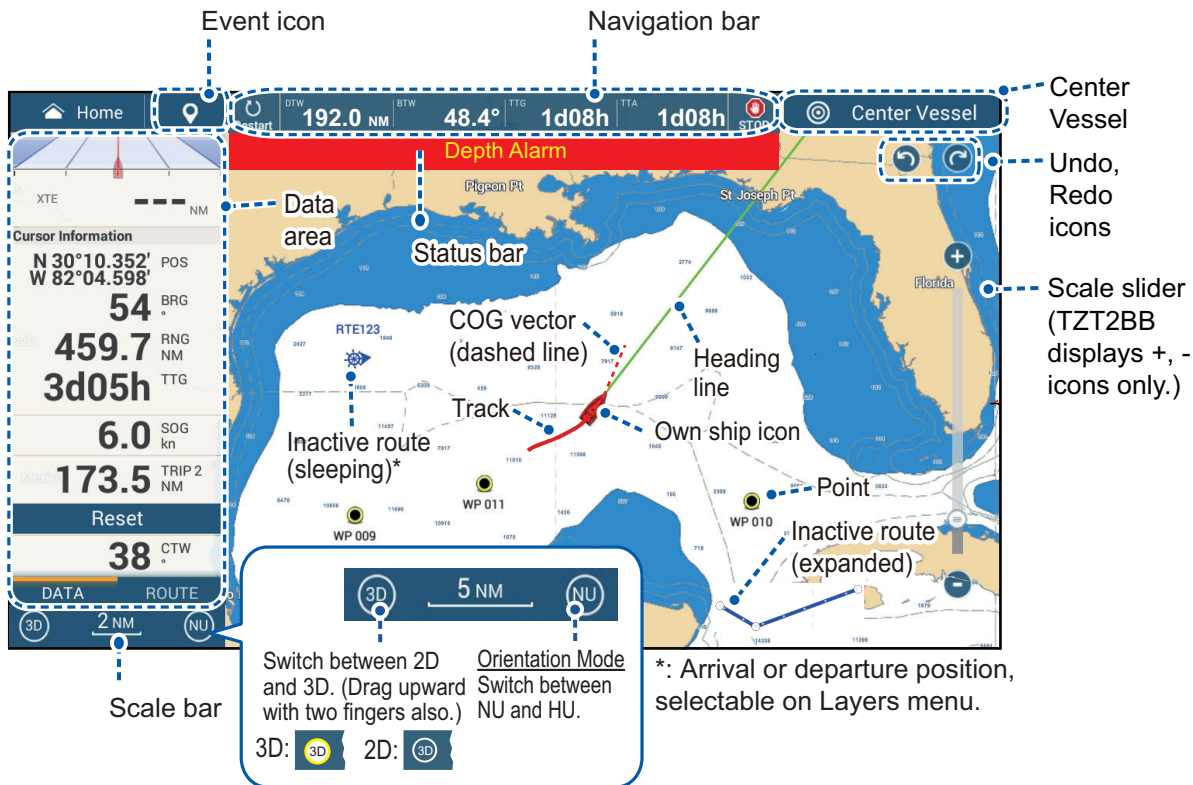


Drag to find required menu, then tap item.



Tap the required menu item.

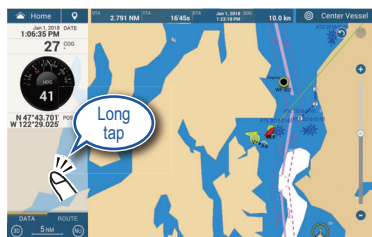
Chart Plotter



Data Area (Data Box)

Swipe from the left edge of the screen rightward to show navigation data in the data area at the left edge of the screen. To hide the data area, swipe the data area leftward or tap the [NavData] indication (yellow) in the Slide-out menu.

Data box settings



Long tap the data box to show [Edit NavData] display.

To remove a data box, or change the displayed data:



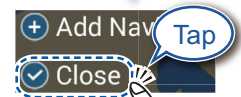
- 1 Tap the data box to remove or change data.
- 2 Remove a data box: Tap [Remove]. Change data: Tap the data to display.

To add a data box:

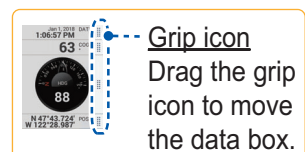


- 1 Tap empty space on the data area or [+Add NavData].
- 2 Tap a data to add.

Tap [Change Type] to change the data display method, among Graphic (analog), Numeric (digital) and Graph.



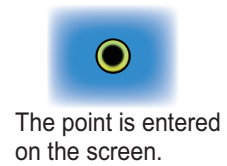
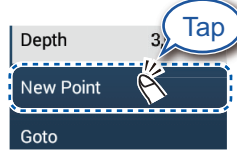
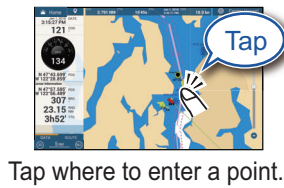
Tap [Close] to finish.



Points/boundaries

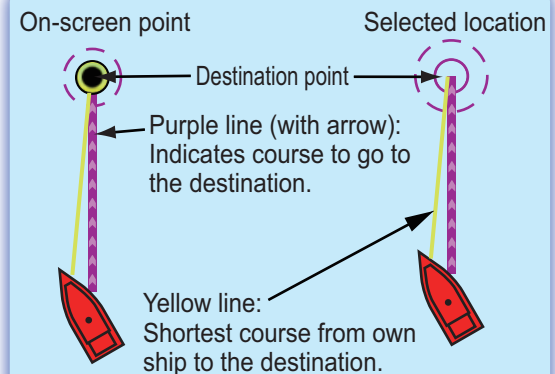
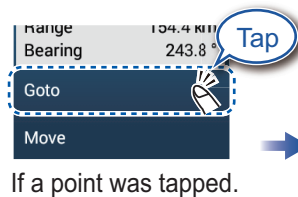
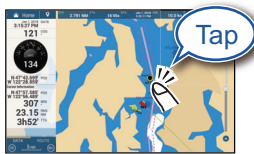
Points can be entered on the chart plotter display (radar, fish finder and weather displays also) to mark important locations such as a good fishing spot. Point attributes (position, symbol type, color, etc.) are recorded to the Points list. Also, boundaries can be set at the position desired (net position, area to avoid, etc.).

How to enter a point



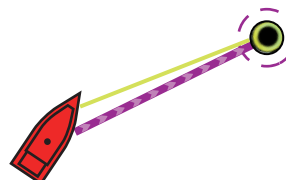
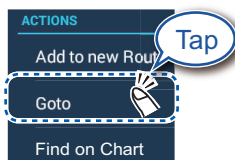
How to set a point as destination

On-screen point

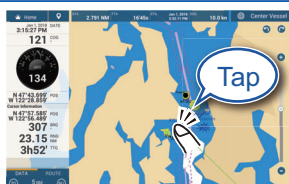


Points list

Sort the list by date, name, icon, color, range.



How to set a boundary



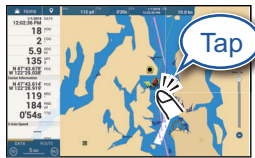
[Area]/[Line]: Tap necessary points to complete the boundary, referring to "Route" on the next page.

[Circle]: Drag icons to adjust the size and position, and then tap [End Boundary].

Routes

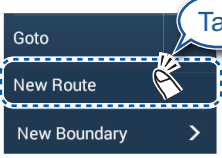
A route is comprised of a series of waypoints leading to a destination. Routes are saved to the routes list.

How to create a new route



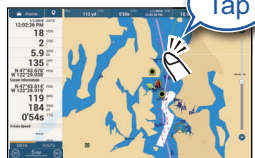
Tap

Tap the first point for the route.



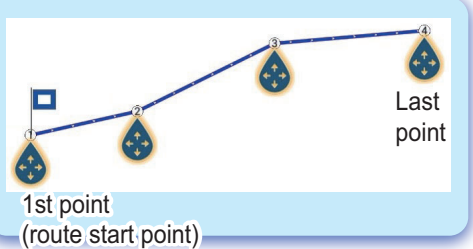
Tap

New Route



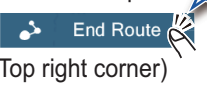
Tap

Tap the next point for the route.
Repeat to enter all points for the route.



1st point
(route start point)

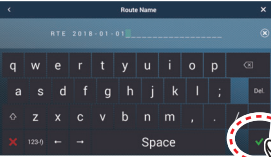
Last point



At the last point
(Top right corner)

Tap

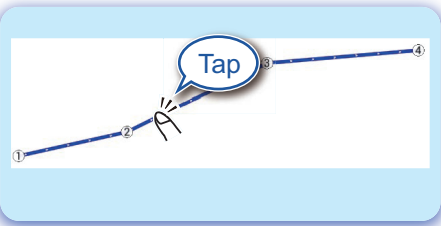
End Route



Tap

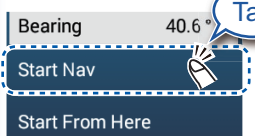
Enter a name for the route, then tap [✓].

How to follow a route



Tap

Tap a leg of the route.




Bearing 40.6°


Tap

Start Nav

Start From Here




Routes list



Tap

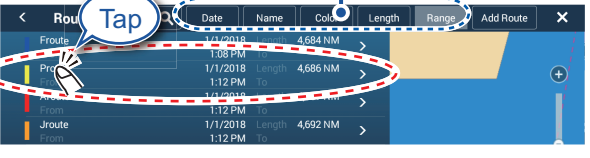
Home screen



Tap

Routes

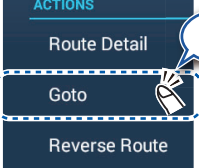
Sort list by date, name, color, length, or range.



Tap

	Date	Name	Col.	Length	Range	Add Route
Route	1/1/2018			4,684 NM		>
From	1:08 PM					
To	1:12 PM			4,686 NM		>
From	1:12 PM					
To	1:12 PM			4,692 NM		>

Tap the route to use.



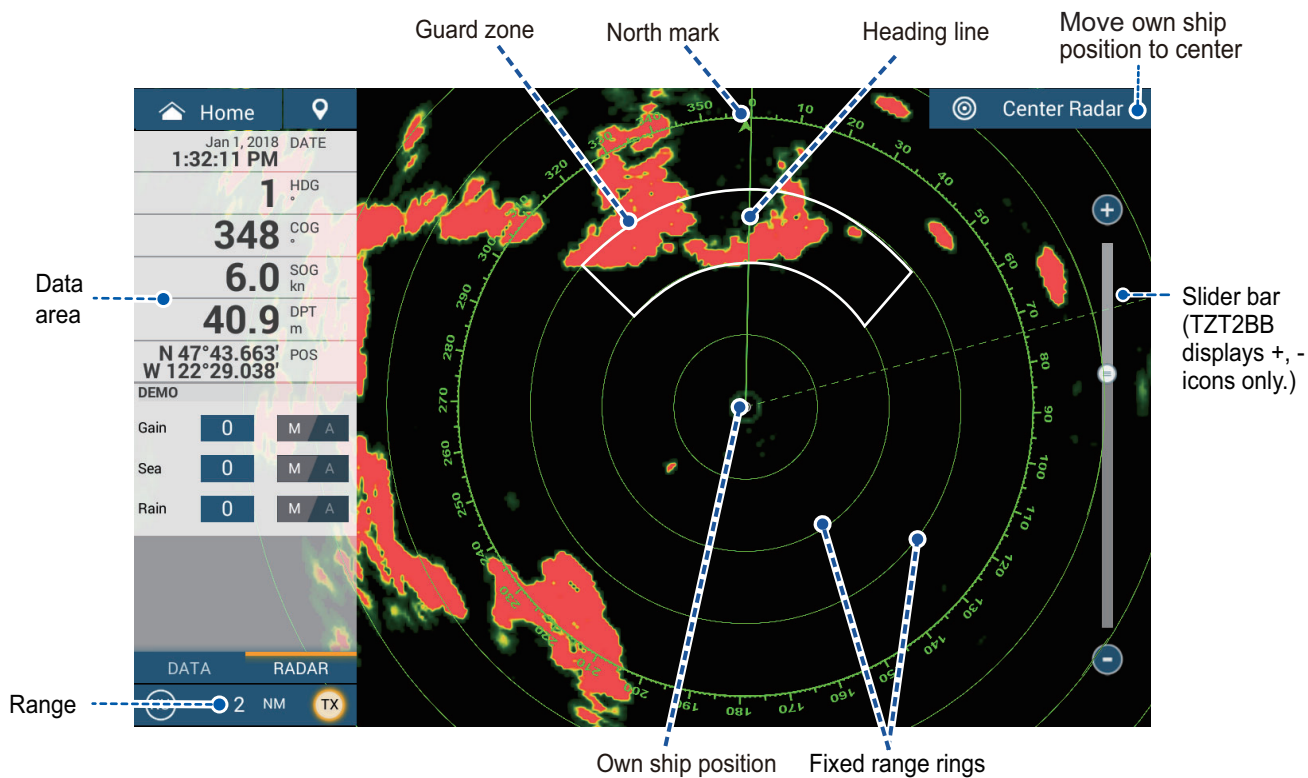
Tap

Route Detail

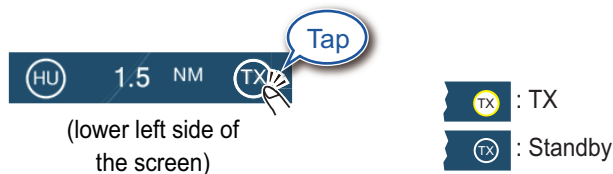
Goto

Reverse Route

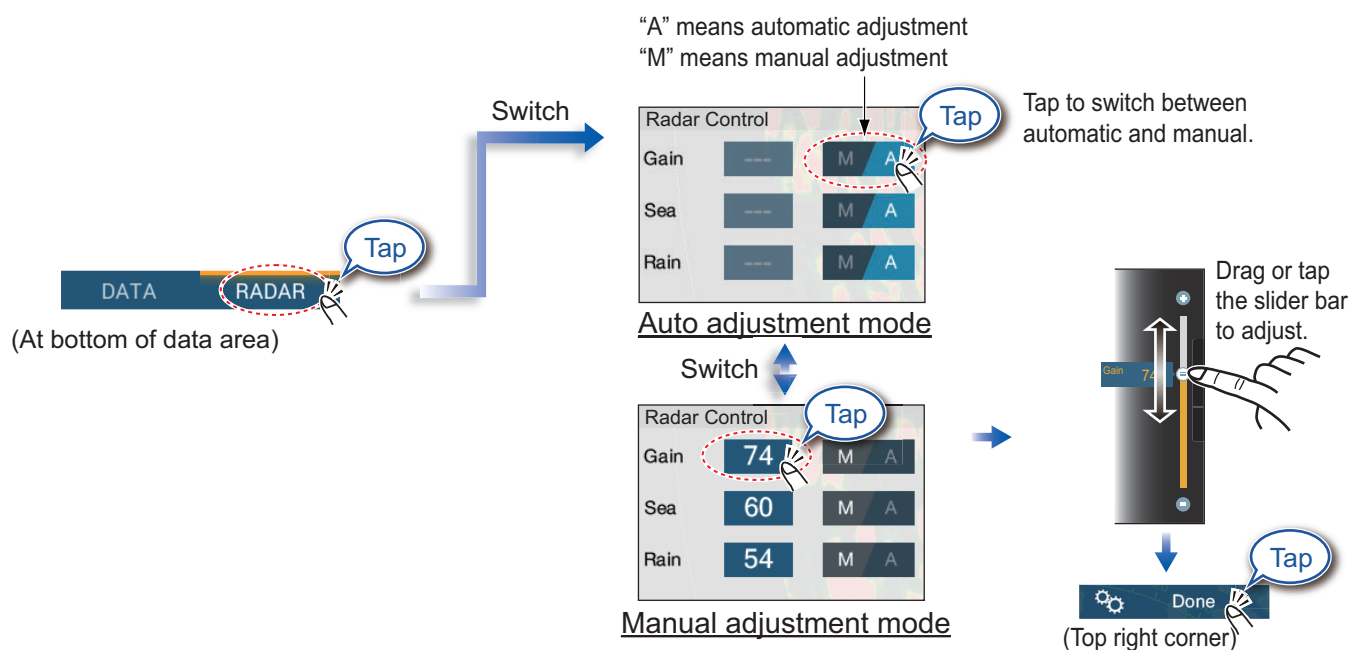
Radar



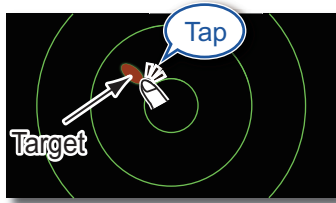
How to switch between standby and TX



How to adjust the gain / sea clutter / rain clutter



How to measure the range, bearing from own ship to a target

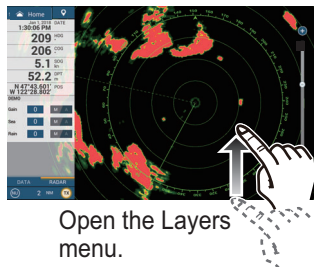


Tap a target to show its range and bearing from own ship.

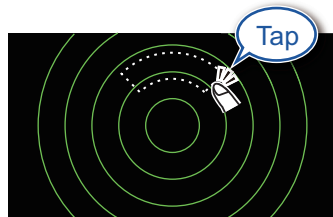


How to set a guard zone

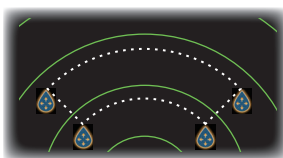
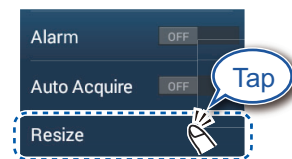
A guard zone alerts you (with aural and visual alarms) when a radar target enters the area you specify.



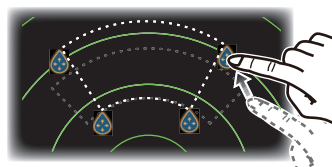
The guard zone appears in dashed lines.



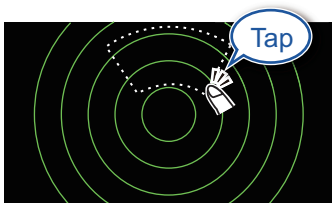
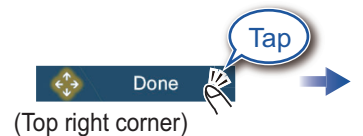
Tap dashed line on guard zone.



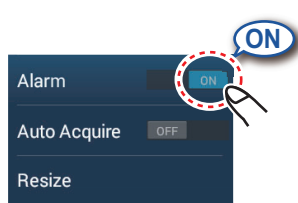
An icon appears at each corner of the guard zone.



Drag the icons to set guard zone.



Tap the guard zone again.

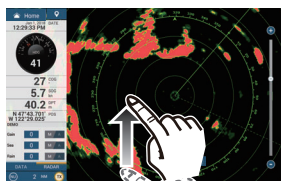


The dashed lines change to solid lines, indicating the guard zone is active.

ARPA Operation

ARPA is an anti-collision aid that tracks the movement of other ships to help prevent collision. ARPA not only tracks other ships but also provides their navigation data. Targets can be acquired manually, automatically, or both automatically and manually.

How to show, hide ARPA symbols



Open the Layers menu.

ARPA Targets

ON

ARPA symbols ON

ARPA Targets

OFF

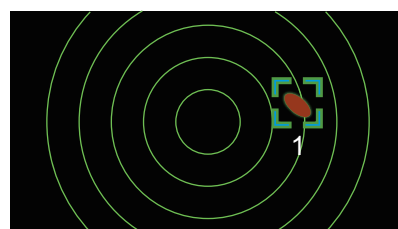
ARPA symbols OFF

How to manually acquire a target

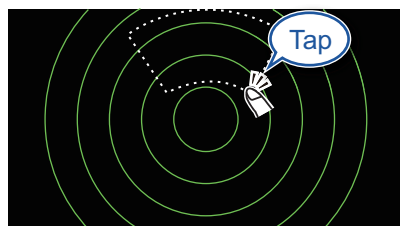


Tap the target to acquire.

Acquire



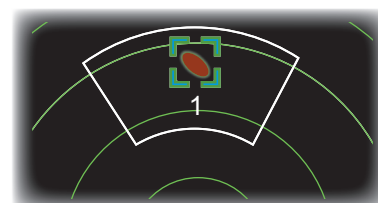
How to automatically acquire a target



Set a guard zone, then tap the guard zone.

Auto Acquire

ON



The dashed lines change to solid lines, indicating the guard zone is active.

ARPA symbols



At acquisition

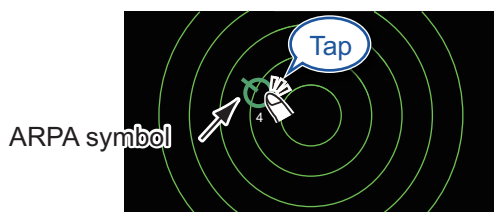


30 seconds
after acquisition

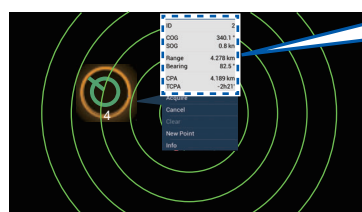


Lost target

How to display target data



Tap an ARPA target to show its data.



ID	2
COG	340.1°
SOG	0.8 kn
Range	4.278 km
Bearing	82.5°
CPA	4.189 km
TCPA	-2h21'

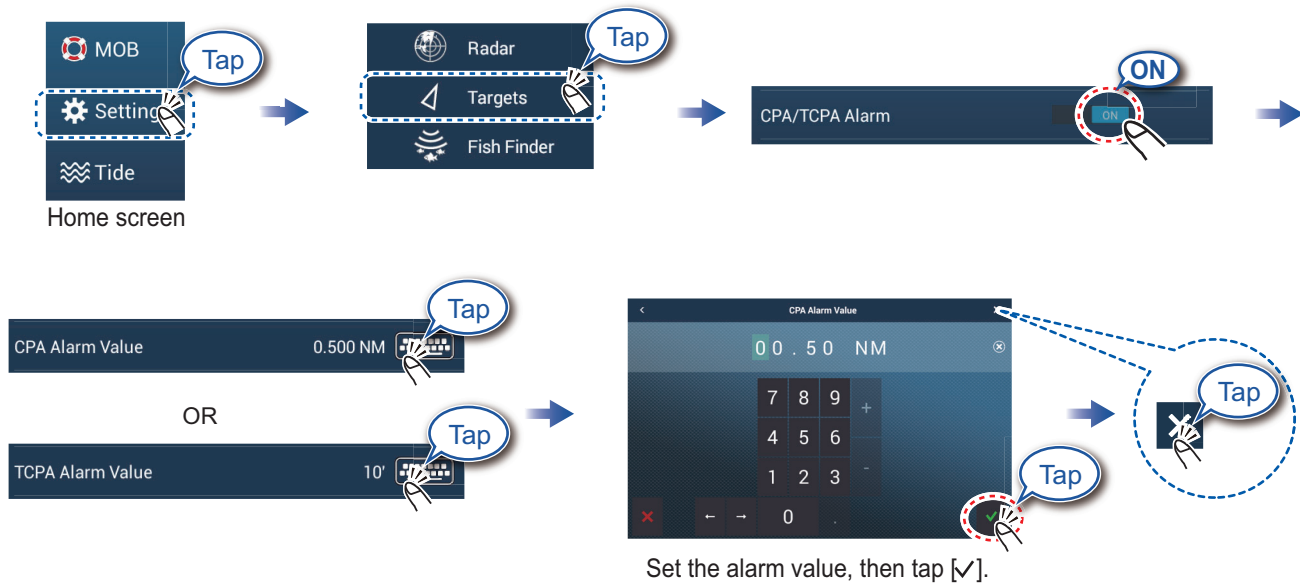
CPA/TCPA alarm

The CPA/TCPA alarm releases an aural alarm and a visual alarm (message in Status bar) when both the CPA and TCPA of a tracked target are equal to or lower than the CPA/TCPA alarm setting.

CPA: Closest point of approach

TCPA: Time to closest point of approach

How to set the CPA/TCPA alarm



How to acknowledge the CPA/TCPA alarm

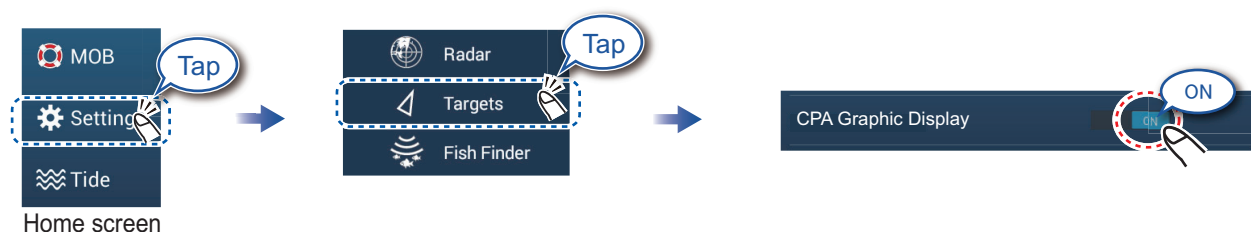
Tap the alarm message (top of screen) to acknowledge the alarm and stop the aural alarm.



CPA Line

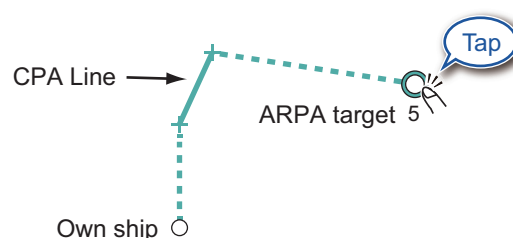
The CPA Line feature gives you a visual line that depicts the closest point of approach to a selected ARPA target. To use this feature, own ship position and heading data are required.

How to enable the CPA Line feature



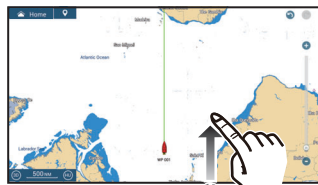
How to show the CPA Line

Tap an ARPA target (condition: target's CPA/TCPA must be a positive value) on the radar or chart plotter.



AIS (Automatic Identification System)

How to show or hide AIS target symbols



Open the Layers menu.



AIS Targets

ON

AIS symbols ON

OFF

AIS symbols OFF

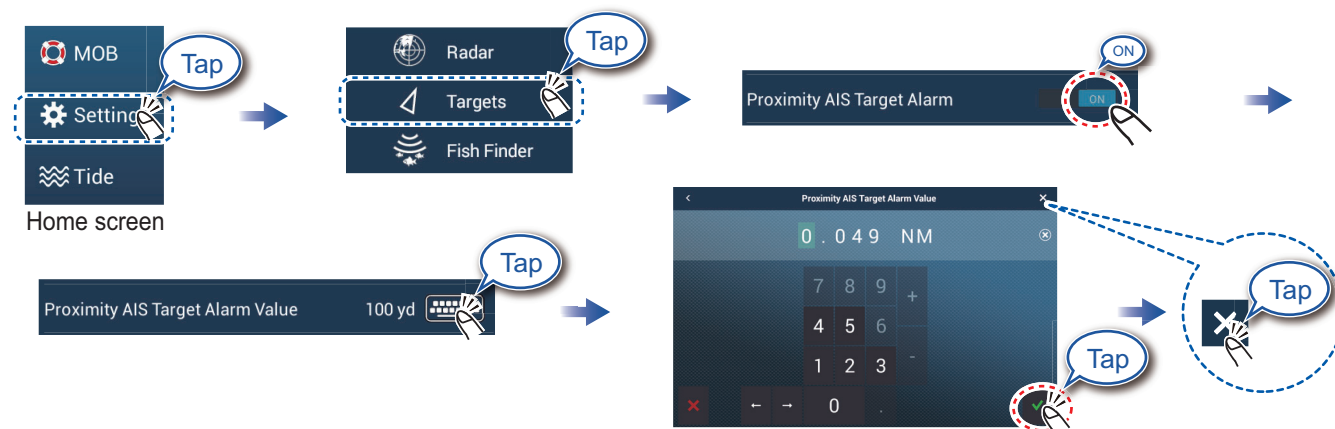
AIS target symbols

	Class A AIS	Class B AIS	BFT* AIS
Activated target	SOG and COG vector Color: Blue	SOG and COG vector Color: Green	SOG and COG vector Color: Blue (filled)
Dangerous target	Color: Red		
Lost target	Color - AIS target: Blue - Cross: Red	Color - AIS target: Green - Cross: Red	Color - AIS target: Blue (filled) - Cross: Red

*: Blue Force Tracking

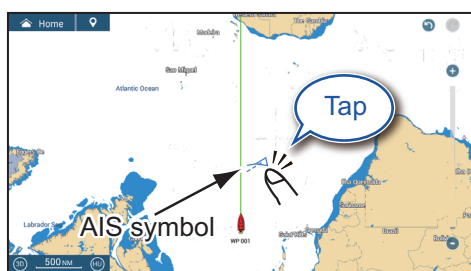
Proximity AIS target alarm

The proximity AIS target alarm releases aural and visual alarms when the distance between own ship and an AIS target is near the alarm value.



Set the alarm value, then tap [✓].

How to show AIS target data

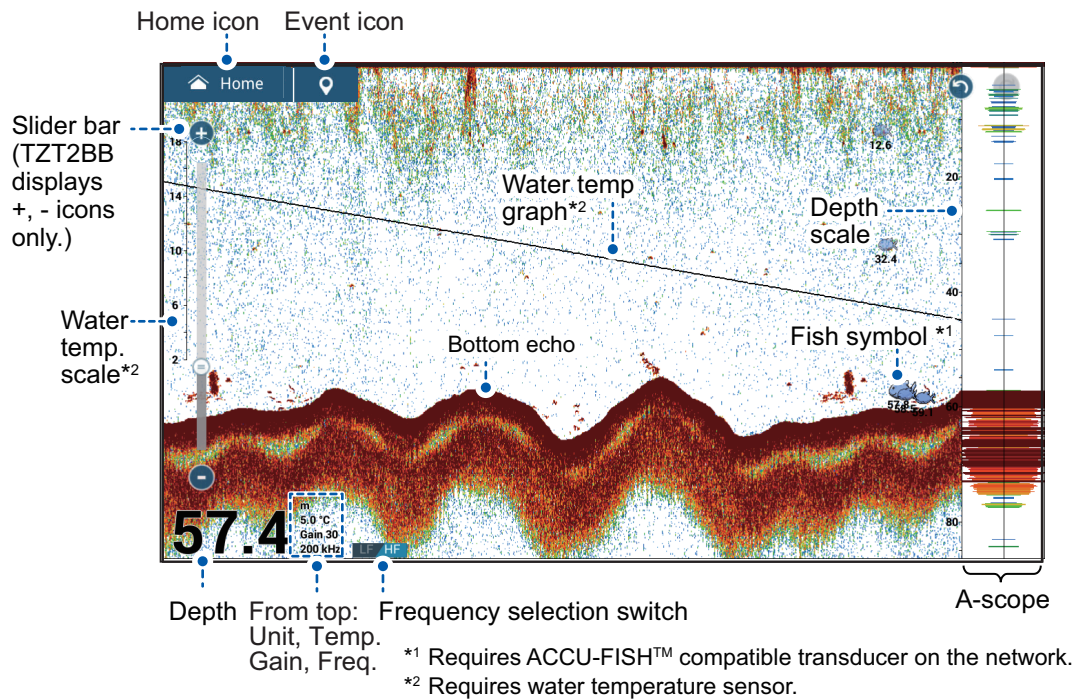


Tap AIS symbol.



Name WALLA WALLA...
MMSI 366710810
COG 263.4 °
SOG 0.1 kn
Range 650 NM
Bearing 118.0 °
CPA 648 NM
TCPA -1d10h
Last Update 0'07s

Fish Finder



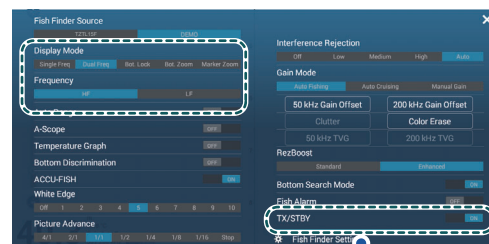
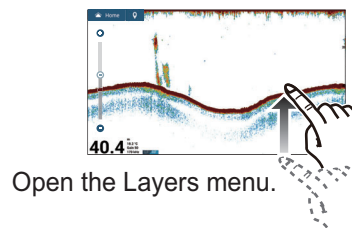
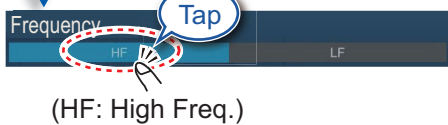
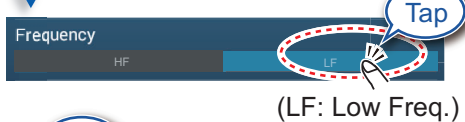
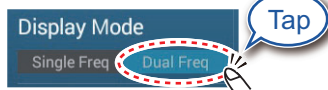
Note: Names of menu items may be different depending on the transducer connected on the network.

How to select a frequency

Low frequency: For “normal” use.
High (Middle) frequency: For detailed observation of schools of fish.
Dual frequency: Show both the low and high frequency pictures.

Single Freq.

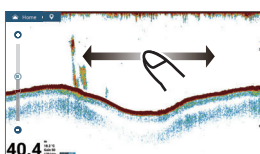
Dual Freq.



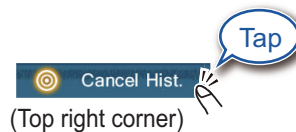
Note

[TX/STBY] toggles between TX and standby.

How to show past echoes (echo history)



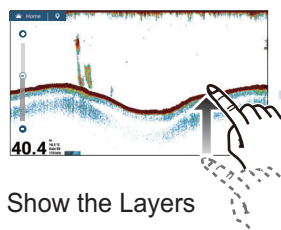
Swipe leftward or rightward to show past echoes.



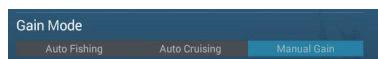
Return to normal display.

How to select the operating mode

The fish finder is available in automatic and manual operation. For automatic operation, gain, clutter and TVG are automatically adjusted.



Show the Layers menu.



Auto mode

Auto Fishing

OR

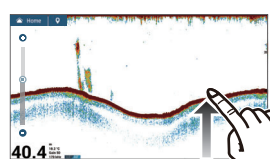
Auto Cruising

Manual mode

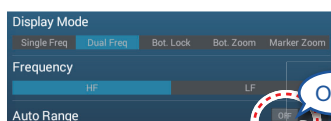
Manual Gain

Manual mode

How to change the range



Show the Layers menu.



Pinch screen.

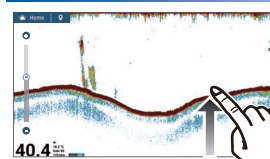
TZTL12F/15F

Drag the slider bar to set the range.

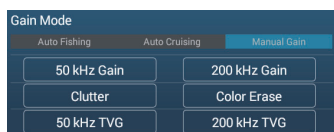
(The slider bar can also be tapped to set the range.)

TZT2BB: Tap +, - icon.

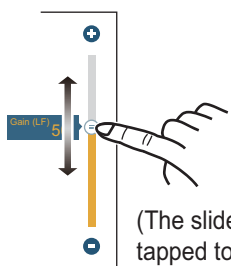
How to adjust the gain



Show the Layers menu.

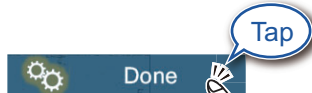


For dual frequency transducer



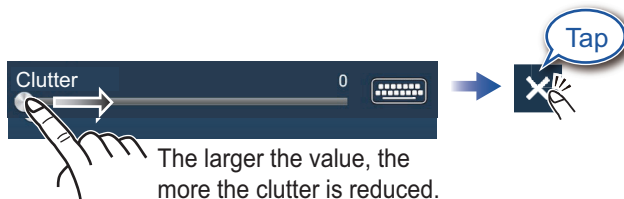
Drag the slider bar to set the gain.

(The slider bar can also be tapped to set the gain.)



(Top right corner)

How to reduce clutter



The larger the value, the more the clutter is reduced.

(Clutter can also be adjusted from the Layers menu.)

Zoom display

Bot. Lock **Bottom Lock**
 Search for bottom fish.

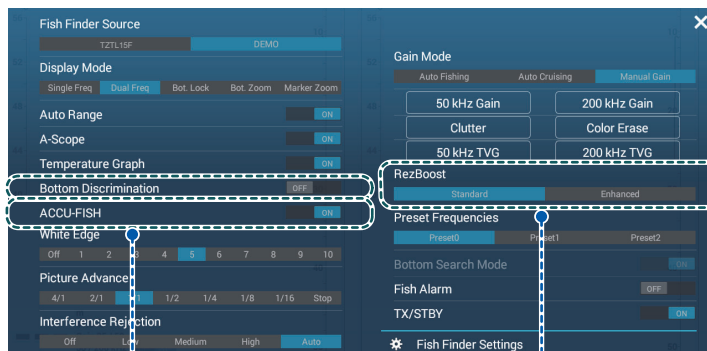
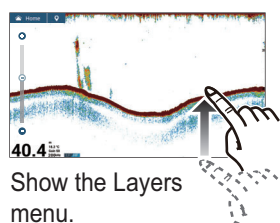
Bot. Zoom **Bottom Zoom**
 Find bottom contour and hardness.

Marker Zoom **Marker Zoom**
 Help determine the size of a school of fish in the middle layer.

- Short tail indicates soft bottom.
 - Long tail indicates hard bottom.

*: Zoom zone is shown with an yellow square.

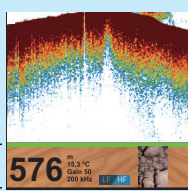
ACCU-FISH™/Bottom Discrimination/RezBoost™



Bottom Discrimination

Show probable bottom hardness. (Requires bottom discrimination capable transducer.)

Bottom Discrimination



The most probable bottom material.

RezBoost™

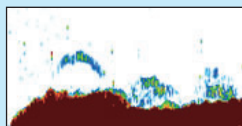
Raise the echo resolution. (Requires RezBoost™ capable transducer.)

RezBoost

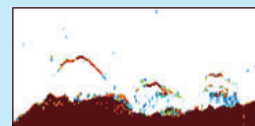
Standard Enhanced

Standard

Enhanced



(Standard mode)



(High resolution mode)

ACCU-FISH™

Detected fish can be marked with a fish symbol. (Requires ACCU-FISH™ capable transducer.)

ACCU-FISH



Fish symbol



Fish size or depth 12

Notice

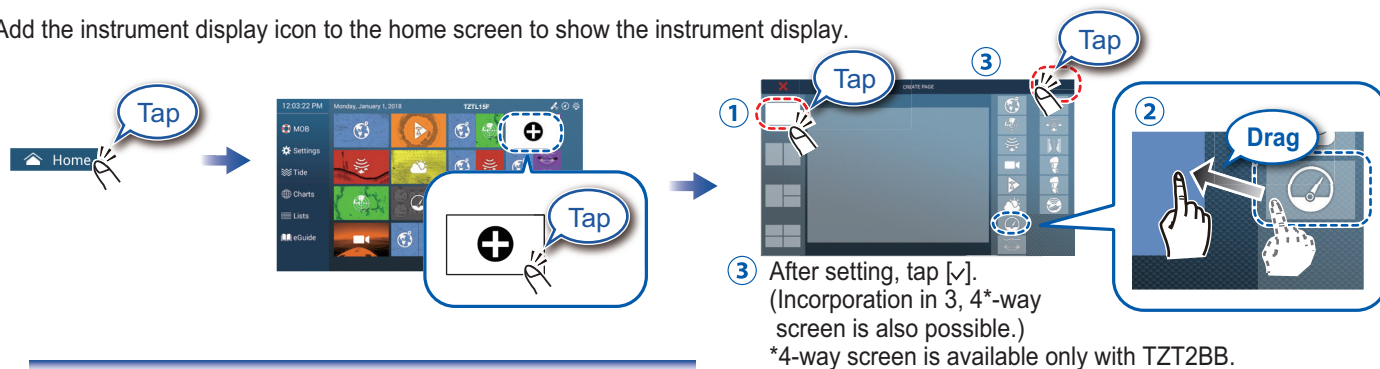
You can select fish symbol type, and fish size or depth indication from the menu - go to home screen, [Settings], [Fish Finder].

Instrument Display

With connection of appropriate sensors, the instrument display shows various navigation data.

How to enable the instrument display

Add the instrument display icon to the home screen to show the instrument display.



How to switch instrument displays (ex. full display)



Swipe rightward or leftward
to switch between displays.



How to edit the instrument display



Tap the instrument display, then tap
[Edit Page] on the pop-up menu.

Edit mode



A white line surrounds each
indication.

In the edit mode, you can remove,
change, add, rearrange indications.

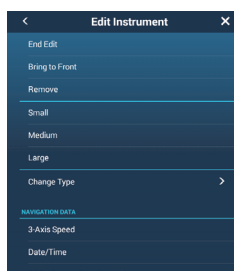
To end the edit mode

Tap the screen, then tap [End Edit] on
the pop-up menu.

How to remove or change an indication



In the edit mode, tap the
indication to remove or change.

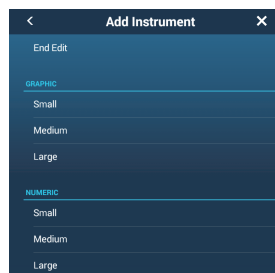


- Remove indication: Tap [Remove].
 - Change size: Tap [Small], [Medium], [Large], [Double Extra Large]*.
 - Change type: Tap [Change Type], then tap desired size.
 - Change indication: Tap indication in [NAVIGATION DATA], [ROUTE INFORMATION], [WIND AND WEATHER], and [ENGINE].
- * TZX2BB, numeric displays only

How to add an indication



In the edit mode, tap a location
not occupied by an instrument display.



Tap a size in desired category.



Tap added instrument display to
change displayed data (see
above).

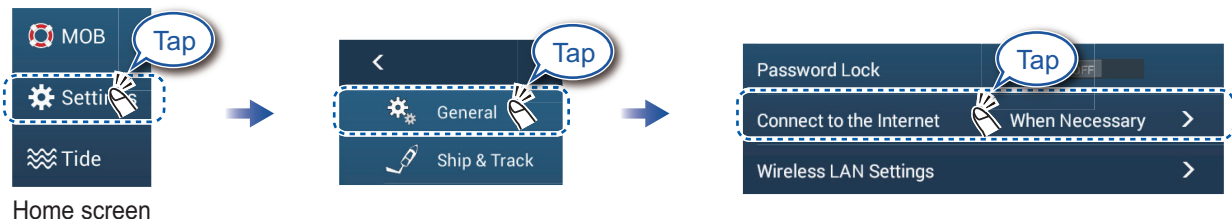
Wireless LAN Settings

You can connect to the internet with the wireless LAN signal to download weather information, update the software (TZT2BB only) and connect to an iPhone, iPod, iPad, or Android™ device, to operate and monitor a NavNet TZtouch2 device.

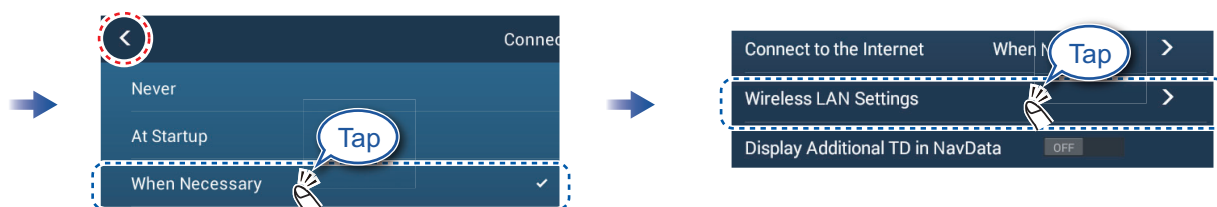
Note: This procedure is not available from a monitor connected to the HDMI OUT2 port (TZT2BB only).

How to connect to an existing LAN

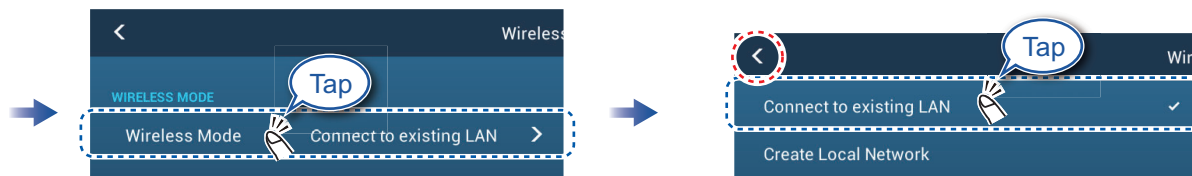
Connect to the existing LAN to download weather data or update the software. For smartphone and tablet settings, refer to appropriate manuals.



Home screen



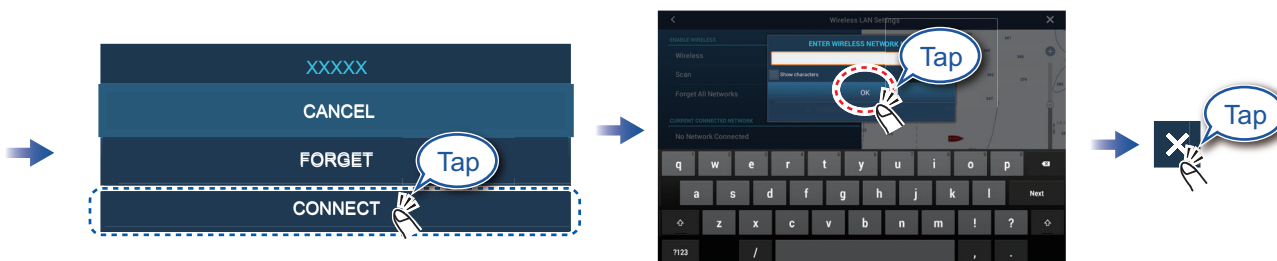
Select [When Necessary], then tap "<".



Select [Connect to existing LAN], then tap "<".



Tap network required.



Enter the password, then tap [OK].

How to create a local wireless network

Create a local wireless network to connect to an iPhone, iPod, iPad, or Android device.

