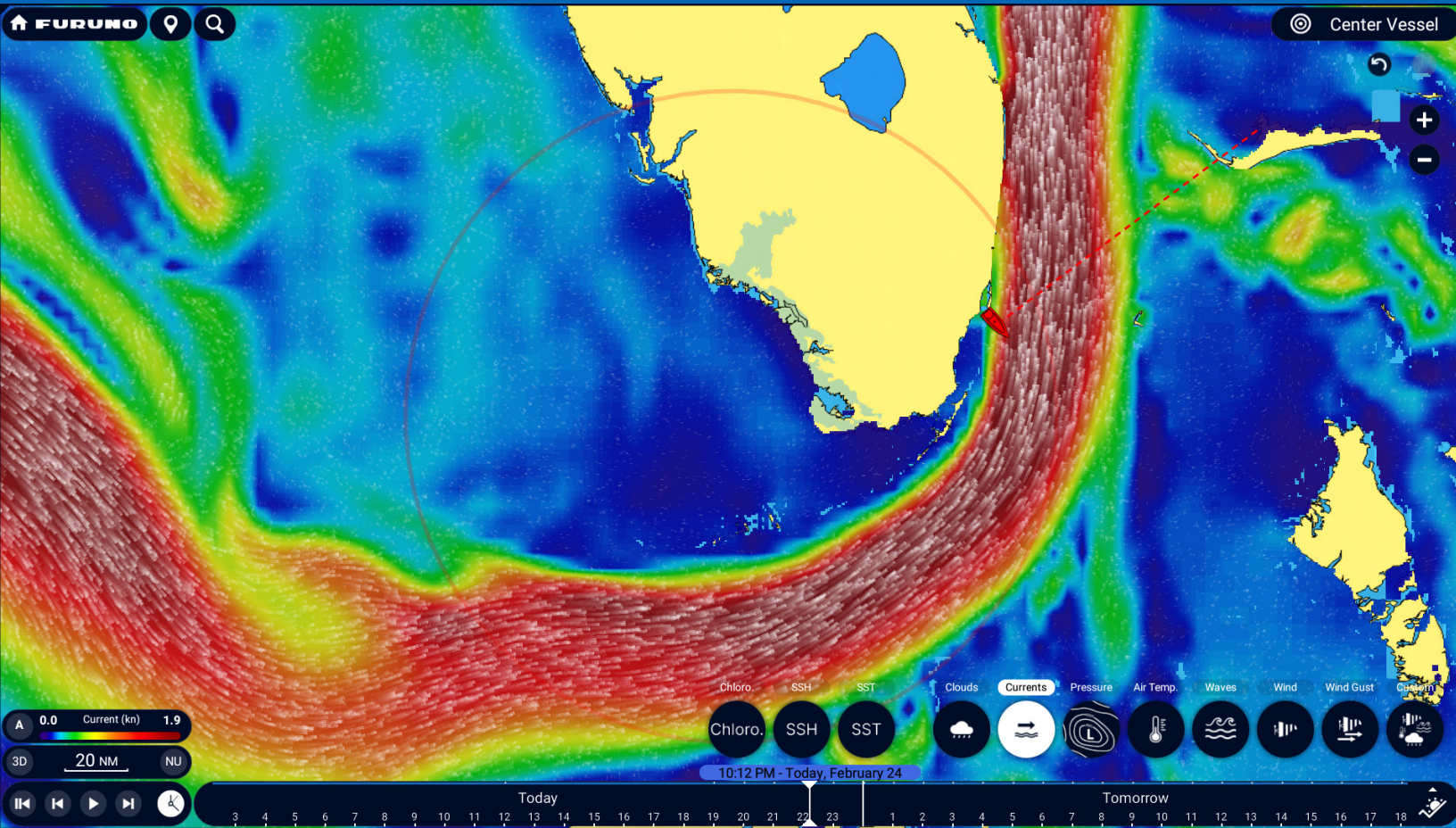


FURUNO

NAVnet

TZ
touchXL

TZ Weather



New TZ Weather

We have replaced the existing weather service (NavCenter) for TZtouchXL with two new options: a free enhanced weather service and a high-resolution premium service available for purchase. Both services, known as TZ Weather, require a My TIMEZERO account and that the TZtouchXL MFD be logged in to download weather data. To access the new weather services, simply tap the TZ Weather icon.



For North American customers with a SiriusXM account, you will also notice a new Sirius XM weather icon.

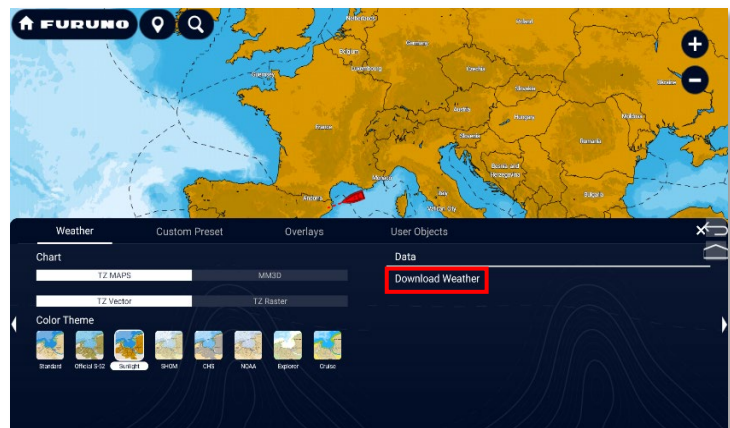
To create a My TIMEZERO account or learn how to log in, refer to the information later in this document. Having a My TIMEZERO account is essential not only for accessing the upgraded free TZ Weather but also for keeping your TZ MAPS updated, using Community Edits, utilizing Dynamic Mooring, sending direct map feedback, and more.

To start using TZ Weather, you must download the weather data first.

Download

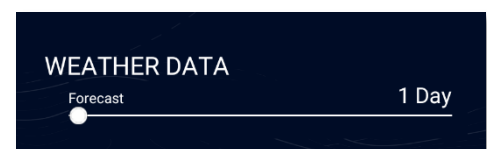
How do I download Weather data?

To download weather, tap on the TZ Weather icon on the home page, swipe up to open the menu, and click on “Download Weather”!



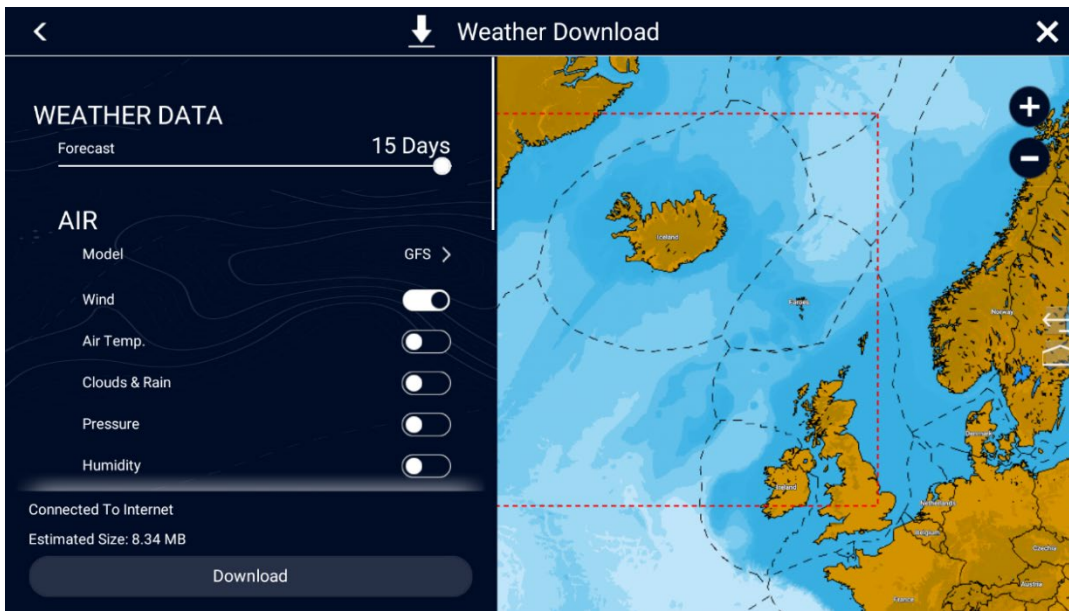
Weather download page Information

The Forecast section allows the user to choose what data, duration of the data, and resolution of the data, to be downloaded.



The user then selects the data model and the data to be downloaded.

The default weather model is GFS. The premium weather subscriber can change this model from one of 6 available. Each weather forecast model has its own particularities. Free weather is GFS model only. For more information on premium weather refer to the premium weather section of this document.



Download data

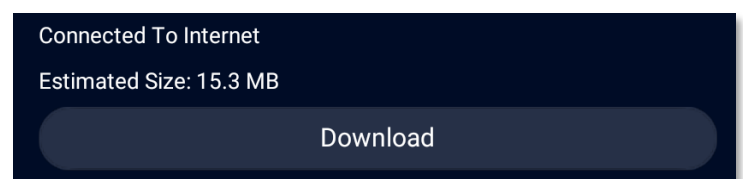
For weather download:

- The red square indicates the area that will be downloaded as weather. The size is fixed. Move your map to the center of the weather area you wish to download in the square.
- Adjust the scale of the area you wish to download.
- Choose the various parameters from the menu on the left of the screen.
- Click on Download.



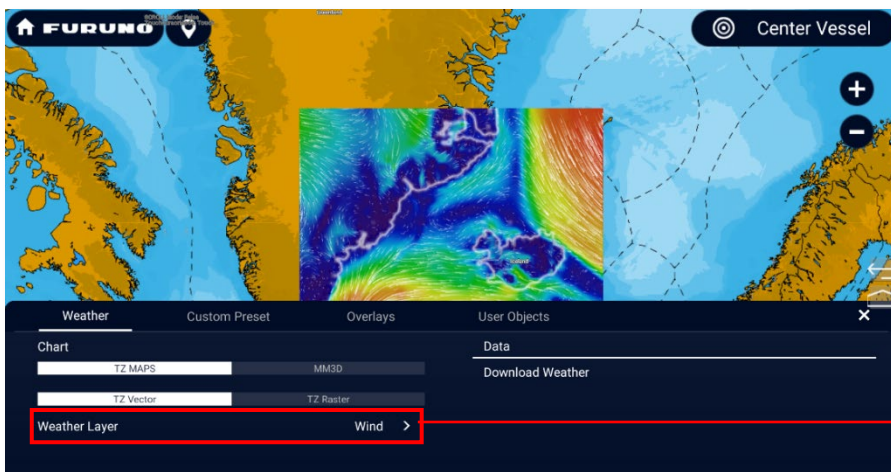
At the bottom of the page, the size of the data to be downloaded is indicated.

If you wish to limit the size of downloads, an option is available in Settings>Weather>Restrict Download Size.

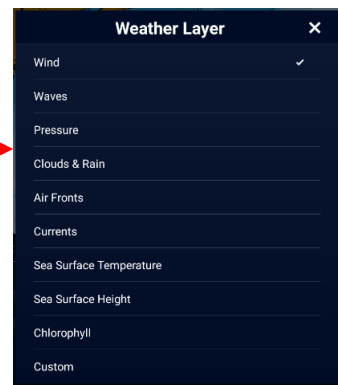


Display

Weather Timeline & Layer



If you have downloaded all available data by turning ON all buttons, you will see the following display:



Note: Data that you did not select to be downloaded is grayed out in this window.

Area where **data is downloaded** and displayed.

Legend of Data selected: you can change the max of the data displayed by tapping on the legend. A slider appears on the right-hand side. Simply adjust the Wind Max by moving the label indicating the value.

These buttons let you **play the weather**

Clock button returns you to the current time.

The **timeline** represents the time scale. You can modify it by moving your finger over a date.

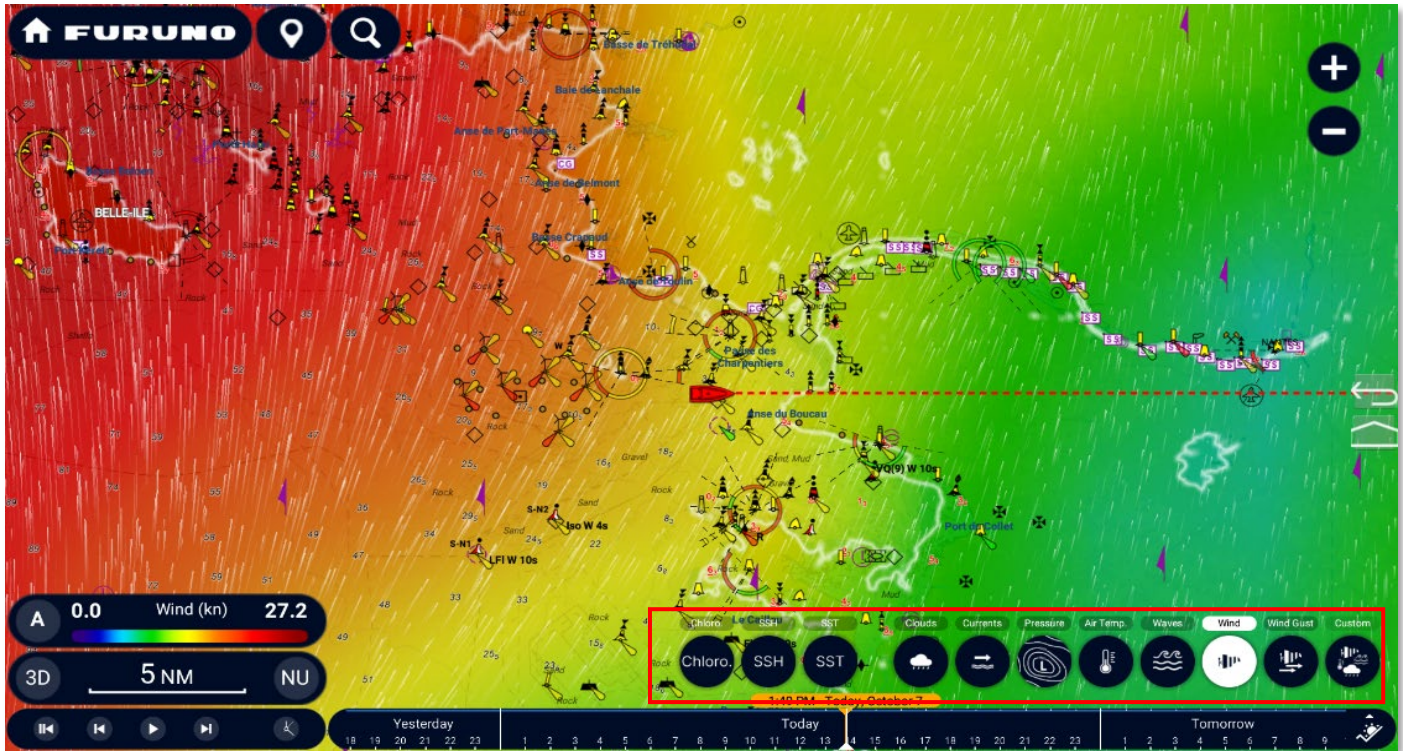
This line shows the **current time**.

Blue color indicates the **presence of downloaded data**.

The Timeline has been redesigned for improved usability.

To make it easier, the default layers are now placed above the TimeLine. Click on them to change the data displayed.

If you want a “Custom” layer, go to Swipe up Menu>Custom Preset: [Custom preset](#)



The layer names disappear after 30 seconds.

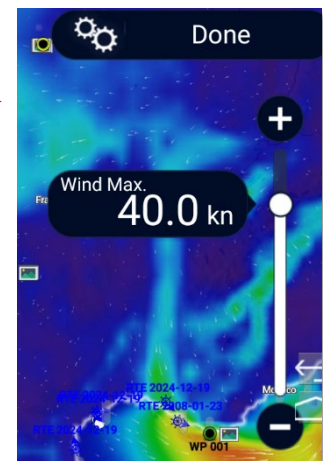
Once the layer has been selected, your data is displayed on the map:

In Manual mode, tap on legend (either Min or Max value), a slider will then appear on the right-hand side. This allows you to manually modify the value.

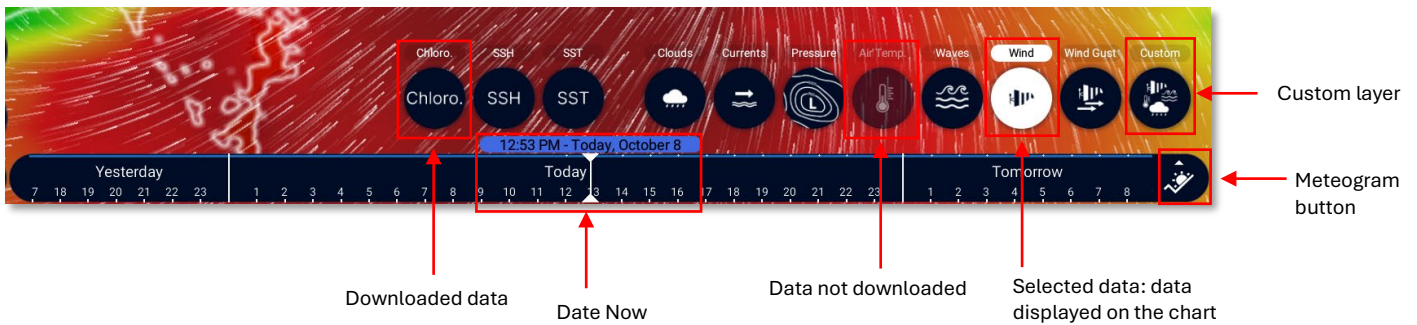


Once you've made your adjustment, tap on the “Done” button.

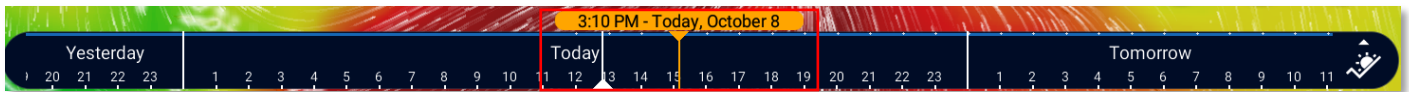
The legend takes the new value into account and updates the data display.



The layers and how they work:







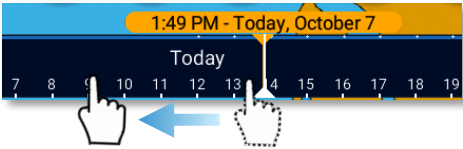
Note that the Timeline label has a blue background when you're on the current date. But if you're in the past or future, the label is orange.



Animate the weather forecast

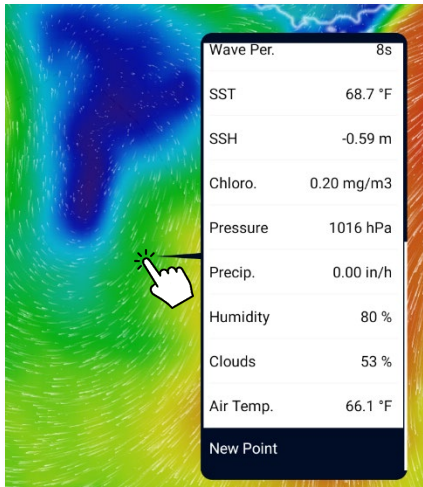
You can animate the weather to see how forecasts evolve over time. Simply use the buttons on the left side of the Timeline to control the animation.



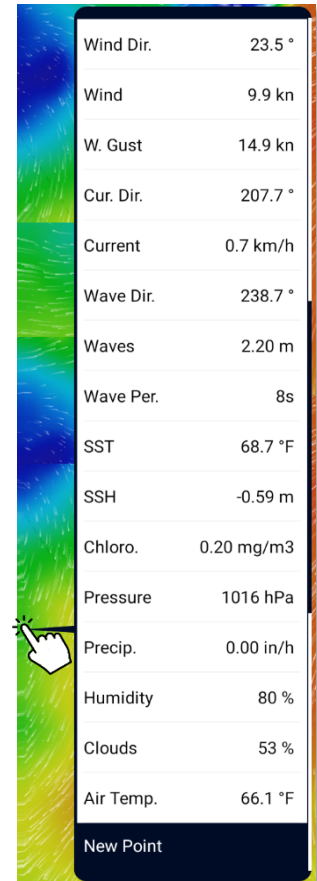
<ul style="list-style-type: none"> Click on the “Rewind” button (positioned at the first weather date). 	
<ul style="list-style-type: none"> Click on the “Play/Pause” button to start or stop the animation. 	
<ul style="list-style-type: none"> Click on the “Clock” button to cancel the virtual time and return to the current time. 	
<ul style="list-style-type: none"> To move forward step by step using the weather forecast intervals, click on the “One step back” or “One step forward” button. 	
<ul style="list-style-type: none"> You can also drag the weather bar and move your finger back and forth to see the evolution of the downloaded weather. 	

Tooltip

When you tap on the map, the information at the tapped point is filled in, provided you have first downloaded the data.



You can also create a mark at the tapped point.



Particles

You can display moving data in the form of animated particles.

An option is available in Settings>Weather to modify particle length: [Particle length](#)

Color shading

When weather data is displayed in color, the corresponding color scale is indicated in the legend at the bottom left of the screen. Data are displayed using a traditional color palette.

Barbs

When wind data is displayed in wind barb mode, the icon and color give an estimate of wind strength and direction. The size and number of barbules depend on wind strength (5kn for small barbules and 10kn for larger ones).

Symbols	Signification
	This icon and color are used if the wind is < 5Kn.
	This icon and color are used if the wind is 5Kn (one small feather).
	This icon and color are used if the wind is 10Kn (one big feather).
	This icon and color are used if the wind is 15Kn (one big feather and a small feather).

Weather Meteogram

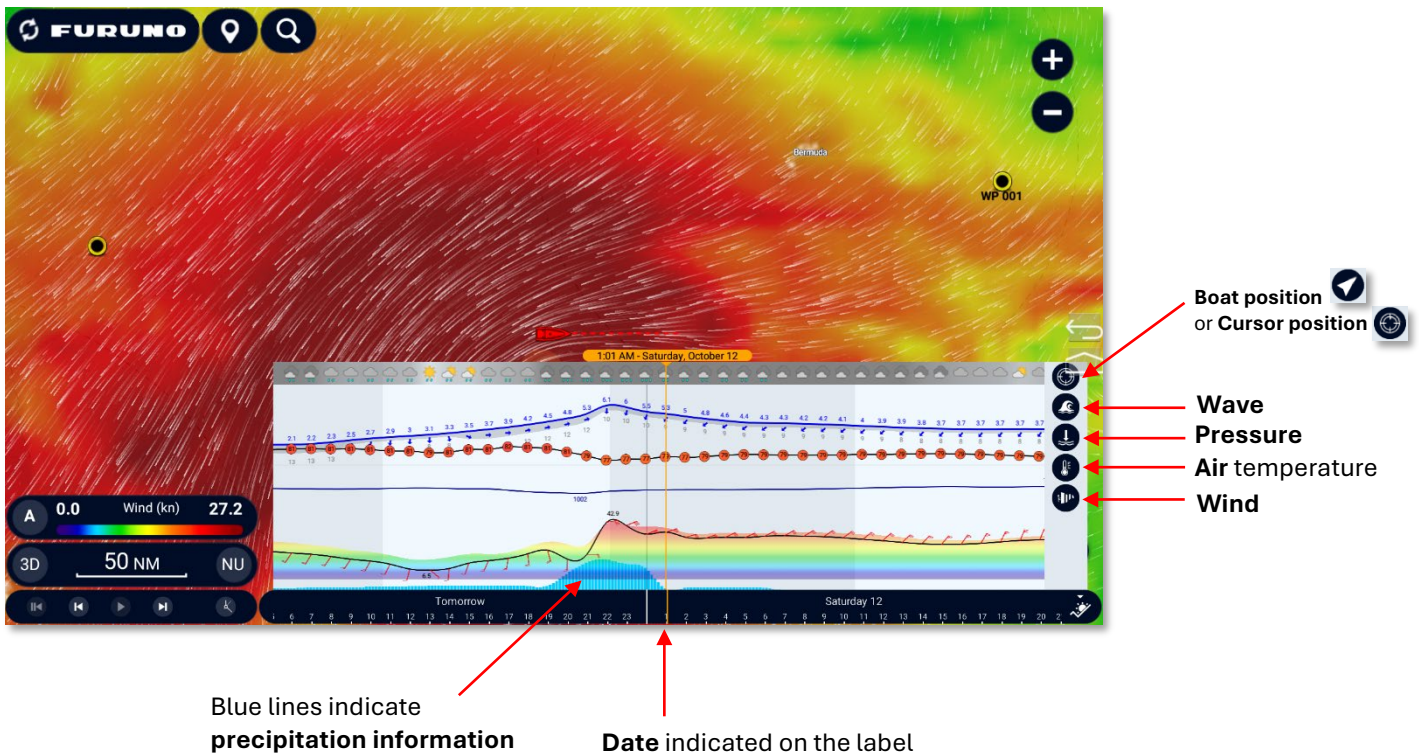
The meteogram provides a graphical representation of one or more weather variables as a function of time at a specific location on the map. This location is represented on the map by a flashing yellow dot. You can move it around the map.

The meteogram is useful when you need to visualize the evolution of the weather at a precise point (represented by an orange dot on the map) and determine the best departure or arrival time. The meteogram is only displayed in the Weather area. Tap on the icon to the right of the TimeLine to display the meteogram.

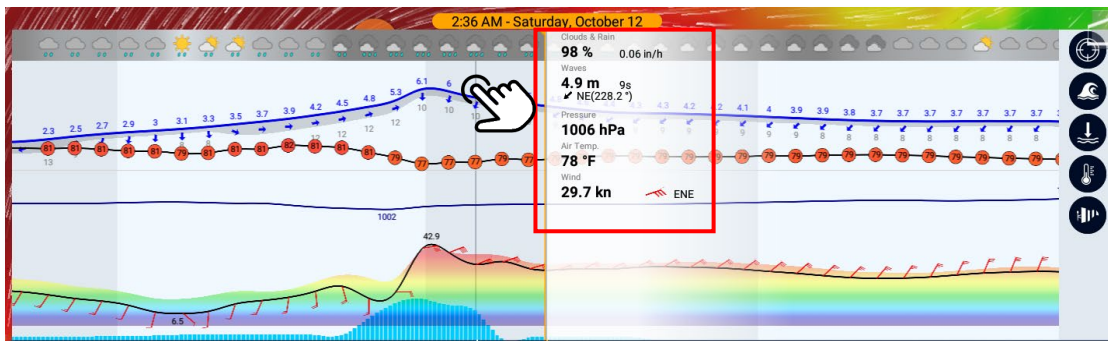


You have the option of displaying the meteogram in two places: at a given position or at the boat.

In this case, you have a different icon on the right-hand side of the meteogram :



If you leave your finger on the meteogram, information on the selected data is displayed numerically.

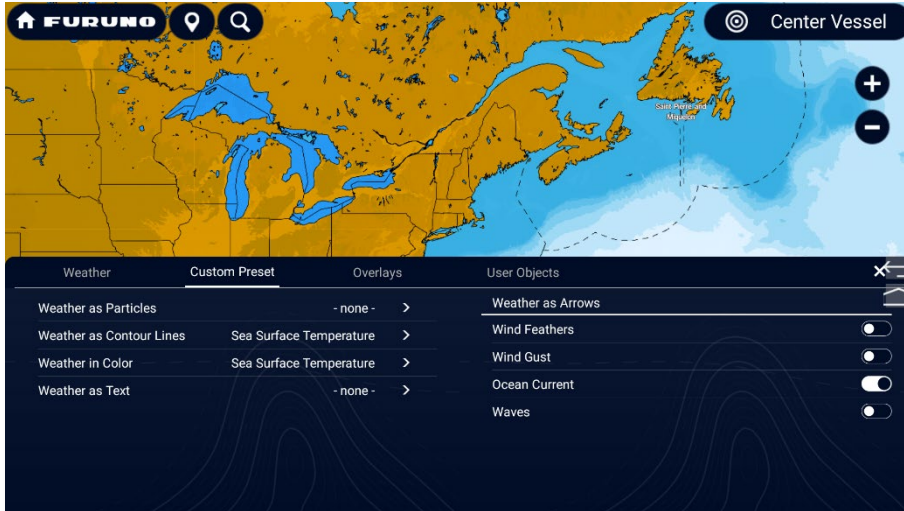


Data displayed varies depending on the date selected.

Custom preset

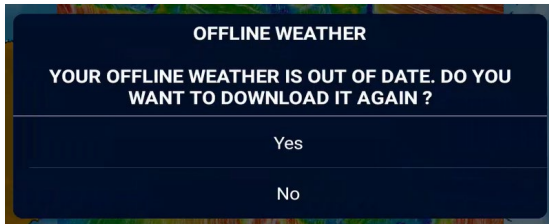
You can customize your Weather Layer. Either tap on “Custom” in the Weather Layer, or go directly to the “Custom Preset” tab in the Swipe up menu.

Note: If you have not selected the “Custom” Weather Layer, the data in the Custom Preset tab will be grayed out.



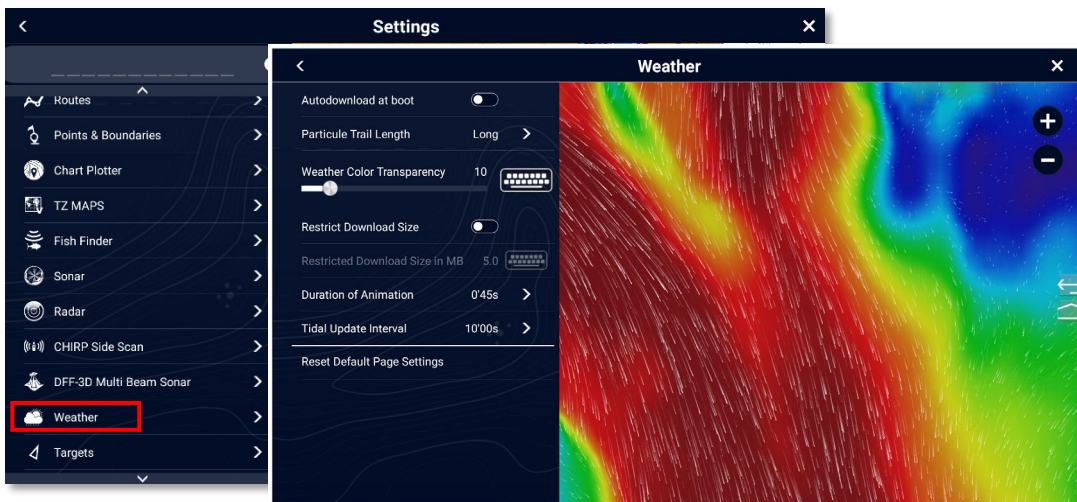
Data too old

If your weather data is out of date, a message appears to download the current data.



Note: data is considered too old when it is more than 2 days old.

Weather options



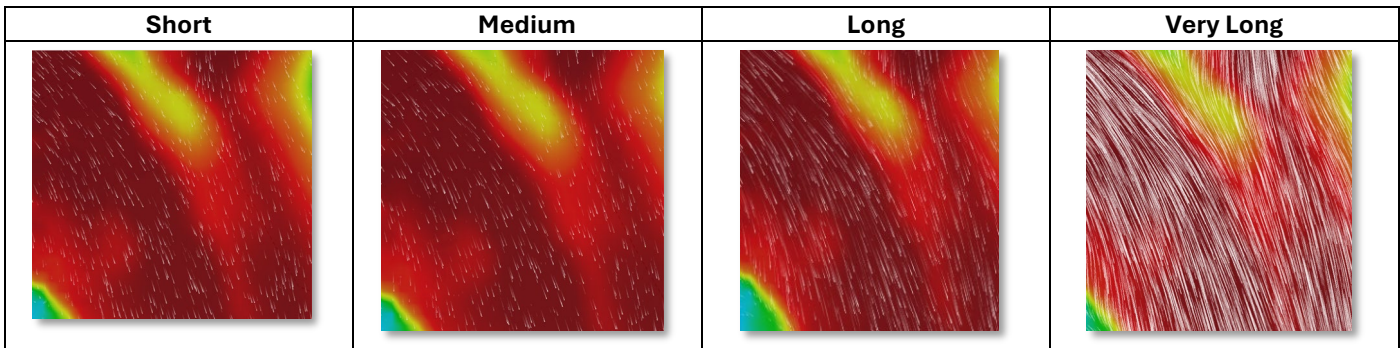
Auto-downloading at Start up

An On/Off button in the weather menu lets you activate or deactivate automatic weather data download when the TZTXL starts up. The default setting is Off.



Particle length

This option lets you choose the particle display mode. The default particle length is long. Particle display options are shown below:



Weather color transparency

This option lets you modify the transparency of the surface layer. The default value is 10. You can modify it between 0 and 80.

Download size limitation

This option lets you limit the size of downloads. The default setting is Off. When you set it to On, the line below becomes active. This allows you to set the maximum download size.

Animation duration

This option defines the speed of the animation when you select the "Play" button in the animation control bar. If, for example, you find that the weather animation is too fast, reduce the speed by selecting a higher value.

SiriusXM / TZ Weather on separate displays

If a SiriusXM, BBWX4 receiver is detected, a new SiriusXM weather tile will be added to the home screen. If you don't have a SiriusXM receiver connected to the TZTXL network, you will not see the SiriusXM weather icon.



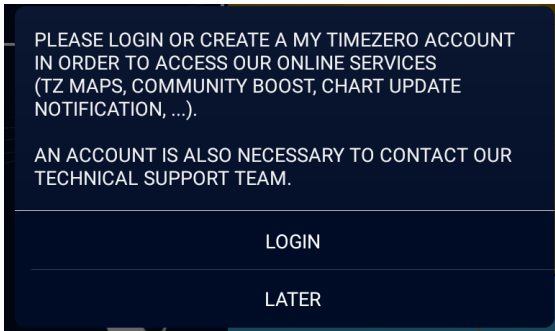
TZ Weather



SiriusXM Weather

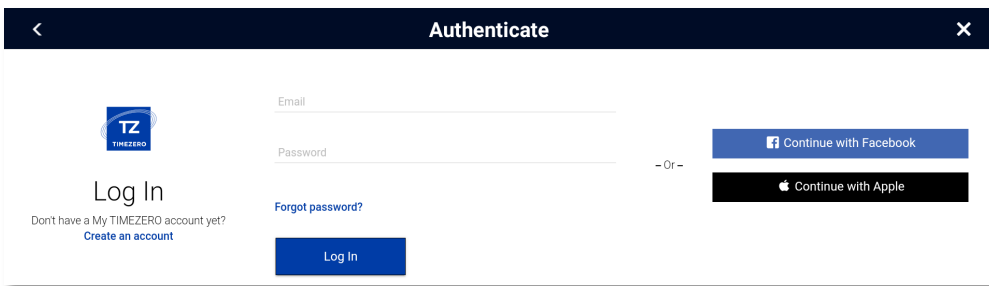
If not logged in, or don't have a My TIMEZERO account

If you are not logged into your My TIMEZERO account, a message appears informing you that your access to services is restricted.



If you tap on Login, a window prompts you to authenticate yourself.

Note: you can create a My TIMEZERO account if you don't have one.

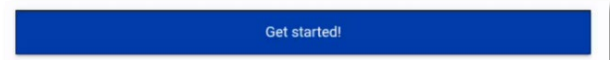


Create My TIMEZERO account:

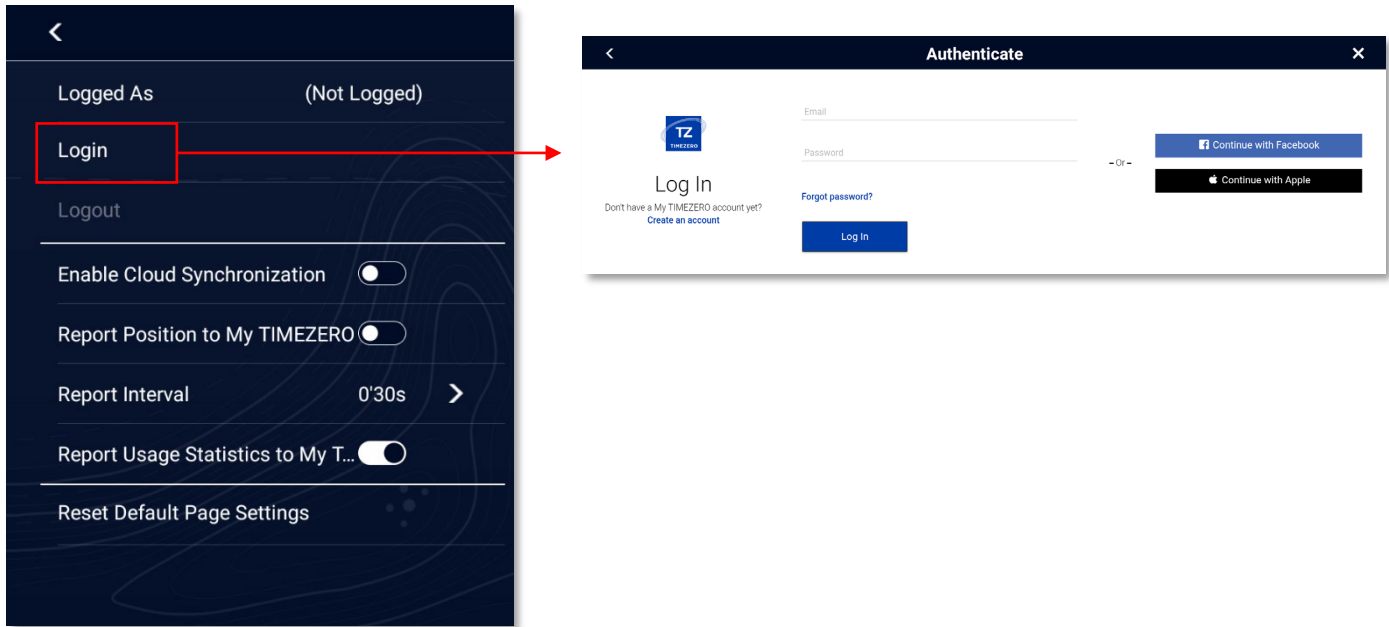
If you do not have a My TIMEZERO account, you can easily create one from the MFD display. Click on "Create an account" and follow the instructions.

A white "Sign Up" form with the TIMEZERO logo. It contains fields for "Email Address", "Confirm Email", "Password", "Confirm Password", "First Name", "Last Name", "Nickname (shown to other users)", and "Country" (pre-filled with "United States of America"). Below the fields is a checkbox for consent to terms and privacy. At the bottom, there is a "Get started!" button highlighted with a red box, a "- Or -" separator, and buttons for "Continue with Facebook" and "Continue with Apple".

Once you've filled in the necessary fields, the "Get started!" button appears. Click on it and your My TIMEZERO account will be created!



You will receive an e-mail confirming the address you have entered. Click on the link!



Once logged in you can go to the TZ Weather page and download weather data.

Premium Weather

In addition to free weather forecasts (based on GFS models), you can subscribe to the Premium Weather service, which gives you access to the higher-resolution global model.

The premium weather subscription is monthly and can be stopped at any time.

The Premium Weather service provides access to a higher-resolution global model (ICON Global) and four, higher-resolution local models (NAM CONUS / Arpège / Arome / ICON Europe):

- The NAM CONUS offers coverage for North America at a resolution of 3 kilometers and up to 2.5 days of forecasting.
- The Arpège model offers European coverage at a resolution of 10 kilometers and up to 4 days of forecasting.
- The Arome model offers coverage of the French coast and neighboring countries at a resolution of 1 kilometer and up to 2 days of forecasting.
- The ICON Europe model offers worldwide coverage at a resolution of 6 kilometers and up to 5 days of forecasting.

The premium weather service also offers access to 3 additional wave models: Arpège Waves, Arome Waves, Copernicus Global Waves

Service	Weather (Free)	Premium Weather (Subscription)
Wind	25km	1km
	GFS: 25km (0.25°)	GFS: 25km (0.25°) ICON Global:13km (0.125°) ICON Europe:6km (0.0625°) Arome:1km (0.01°) Arpège :10km (0.1°) NAM CONUS:3km (0.03°)
Wind Gust	25km	1km
	GFS: 25km (0.25°)	GFS: 25km (0.25°) ICON Global:13km (0.125°) ICON Europe:6km (0.0625°) Arome:1km (0.01°) Arpège :10km (0.1°) NAM CONUS:3km (0.03°)
Pressure	25km	1km
	GFS: 25km (0.25°)	GFS: 25km (0.25°) ICON Global:13km (0.125°) ICON Europe:6km (0.0625°) Arome:1km (0.01°) Arpège :10km (0.1°) NAM CONUS:3km (0.03°)
Cloud	25km	1km
	GFS: 25km (0.25°)	GFS: 25km (0.25°) ICON Global:13km (0.125°) ICON Europe:6km (0.0625°) Arome:1km (0.01°) Arpège :10km (0.1°) NAM CONUS:3km (0.03°)
Precipitation	25km	1km
	GFS: 25km (0.25°)	GFS: 25km (0.25°) ICON Global:13km (0.125°) ICON Europe:6km (0.0625°) Arome:1km (0.01°) Arpège :10km (0.1°) NAM CONUS:3km (0.03°)
Humidity	25km	1km
	GFS: 25km (0.25°)	GFS: 25km (0.25°) ICON Global:13km (0.125°) ICON Europe:6km (0.0625°) Arome:1km (0.01°) Arpège :10km (0.1°) NAM CONUS:3km (0.03°)
Wave (Significant)	25km	3km
	GFS: 25km (0.25°)	GFS: 25km (0.25°) Copernicus Global:9km (0.83°) Arome :3km (0.025°) Arpège :10km (0.1°)
Surfacic Current	9km	9km
	9km (0.83°)	9km (0.83°)

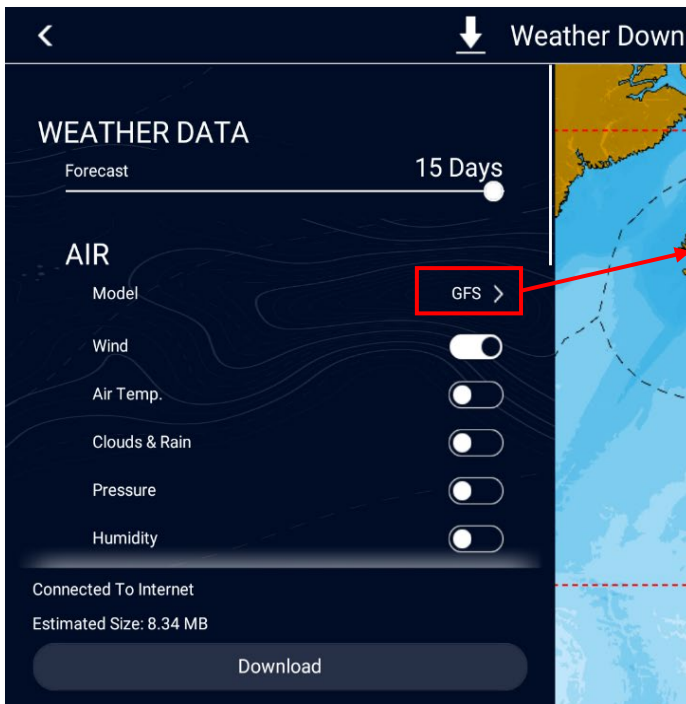
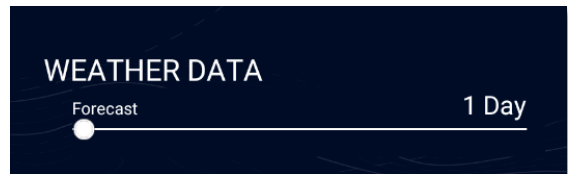
Weather download page Information

The Forecast section allows the user to choose what data, duration of the data, and resolution of the data, to be downloaded.

The user then selects the data model and the data to be downloaded.

The default model is GFS. The premium weather subscriber can change this model from one of 6 available. Each model has its own particularities. Free weather is GFS model only.

The Arpège model offers European coverage with a resolution of up to 10 kilometers and up to 4 days of forecasts. The Arome model offers coverage of the French coast and neighboring countries, with a resolution of up to 1 kilometer and up to 2 days of forecasts. The NAM CONUS model offers coverage of North America at a resolution of 3 kilometers and up to 2.5 days of forecasts. The ICON Global model offers worldwide coverage at a resolution of 13 kilometers (more than double that of the GFS model) for forecasts of up to 7.5 days. The ICON EUROPE model offers Europe-specific coverage, with a resolution of 6 kilometers and forecasts of up to 5 days. The premium weather service also offers access to 3 additional wave models.



GFS
Global weather model operated by NOAA.
Coverage : World
Resolution : 25 km (0.25°)
Forecast : + 15 days
Time Interval : 1 hour the first 5 days then 3 hours

Arpege
High resolution model operated by Meteo France.
Coverage : West Europe
Resolution : 10 km (0.1°)
Forecast : +4 days
Time Interval : 1 hour

Arome
Very high resolution model operated by Meteo France.
Coverage : France
Resolution : 1 km (0.01°)
Forecast : +2 days
Time Interval : 1 hour

NAM CONUS HR
Very high resolution model operated by NOAA.
Coverage : North America
Resolution : 3 km (0.03°)
Forecast : +2.5 days
Time Interval : 1 hour

DWD ICON GLOBAL
High resolution model operated by DWD.
Coverage : World
Resolution : 13 km (0.125°)
Forecast : +7.5 days
Time Interval : 1 hour the first 3 days then 3 hours

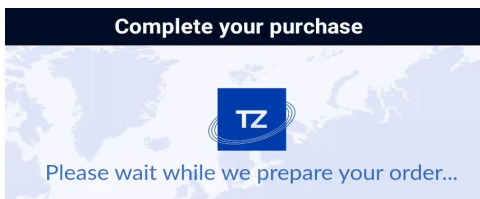
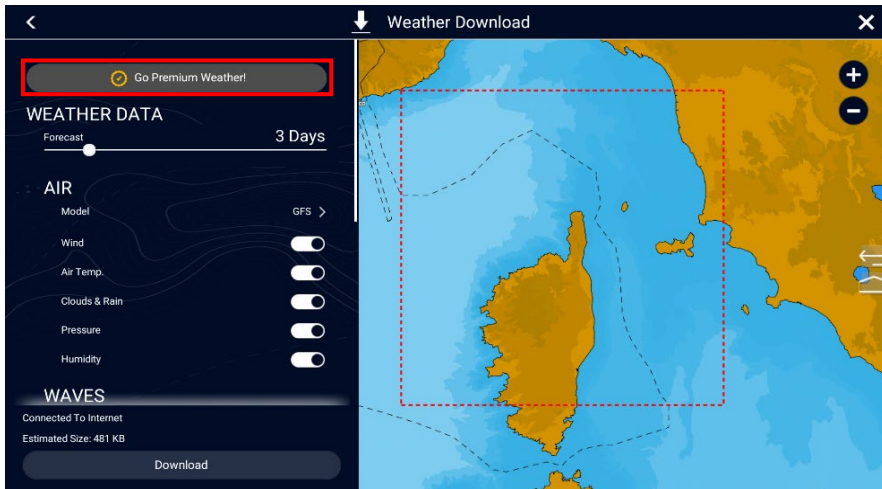
DWD ICON EUROPE
High resolution model operated by DWD.
Coverage : Europe
Resolution : 6 km (0.0625°)
Forecast : +5 days
Time Interval : 1 hour the first 3 days then 3 hours

Premium Weather subscription

- You can subscribe to Weather Premium after logging in.

User already logged in

If you are already logged in to NavNet TZtouchXL, you can purchase Premium TZ Weather by clicking on the “Go Premium Weather” button.



To make this purchase, please fill in the form below.

Cart

Premium Weather - monthly subscription
(Ref: WEATHERPREMIUM01)
Enjoy unlimited access to premium weather forecasts for the entire month!
Auto-Renewable: Your subscription automatically renews unless auto-renew is turned off at least 24-hours before the end of the current period.
Cancel anytime.

€9.99/month
with 7 days free trial

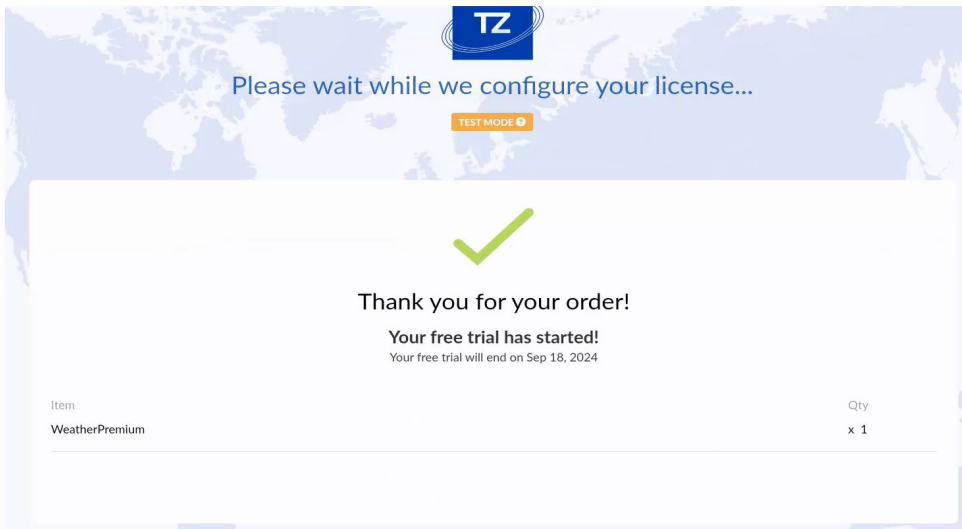
Order for license:

[TEST MODE](#)

You will not be billed today
7 days free trial
Your free trial will end on Sep 18, 2024.
[View Details](#)
Includes VAT €0.00 (20%).
[Enter VAT ID](#)
[Enter Promotional Code](#)

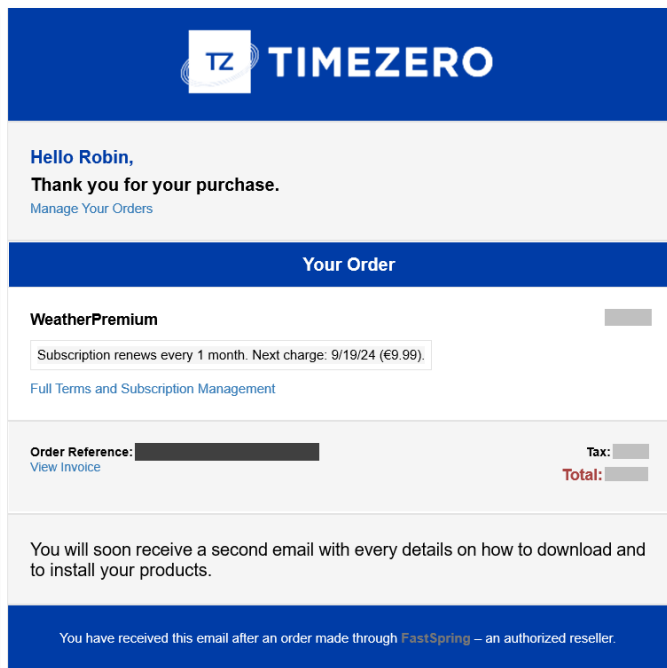
I agree with FastSpring [terms of service](#) and [privacy policy](#).

You've made a successful purchase! A confirmation window is displayed.

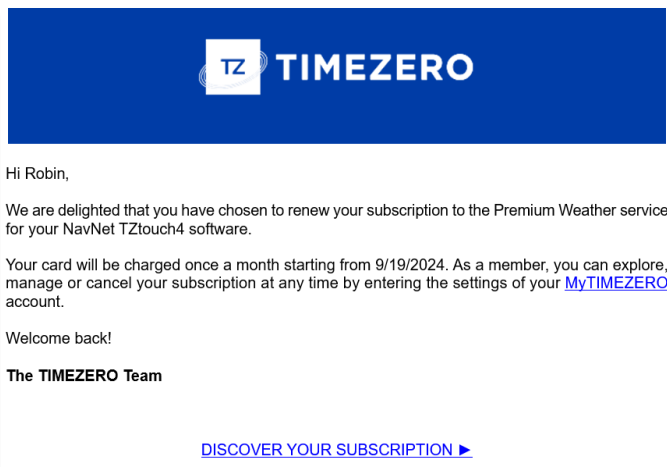


You will receive emails to confirm your purchase with a TRIAL period:

- Summary of your purchase:

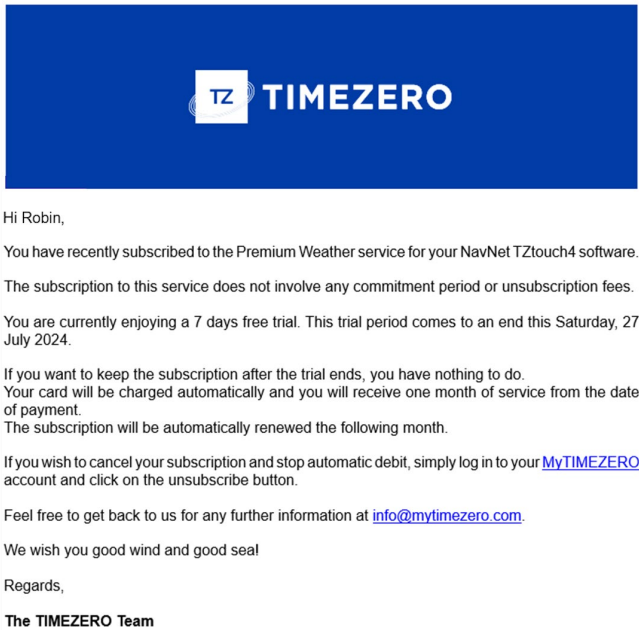


- TIMEZERO team explaining the purchase:



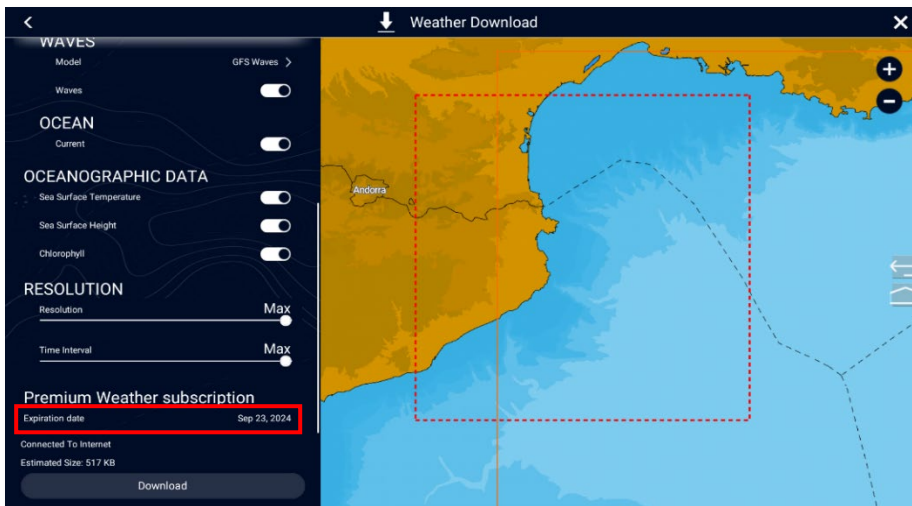
- End TRIAL

You will then receive an e-mail indicating the end of the TRIAL period. You will receive the e-mail one day before the TRIAL expiration date.



Expiration date

At the bottom of the “Weather Download” page, you will find the expiration date of your Weather Premium subscription:

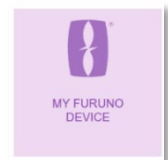


Cancelling your purchase

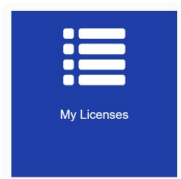
You can cancel your purchase at any time.

- Online:

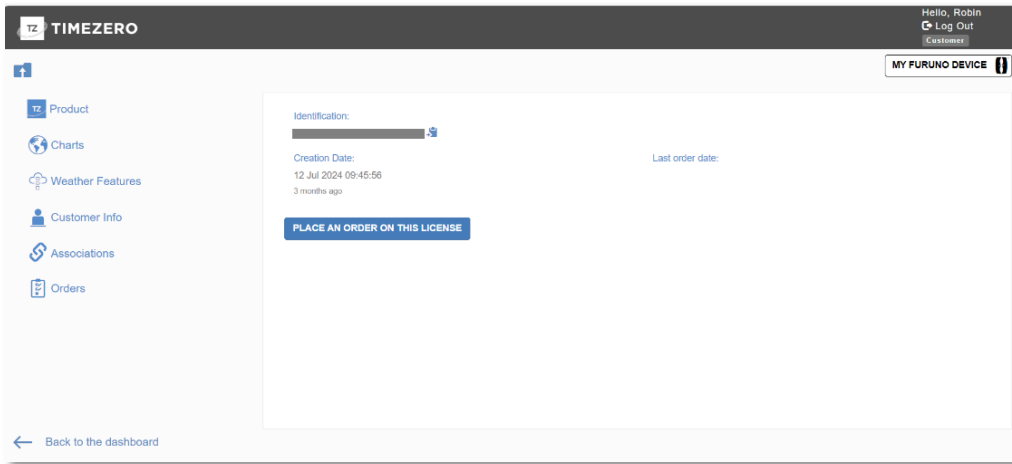
Simply go to your MY TimeZero account online and click on the tile dedicated to your NavNet TZtouch XL device:



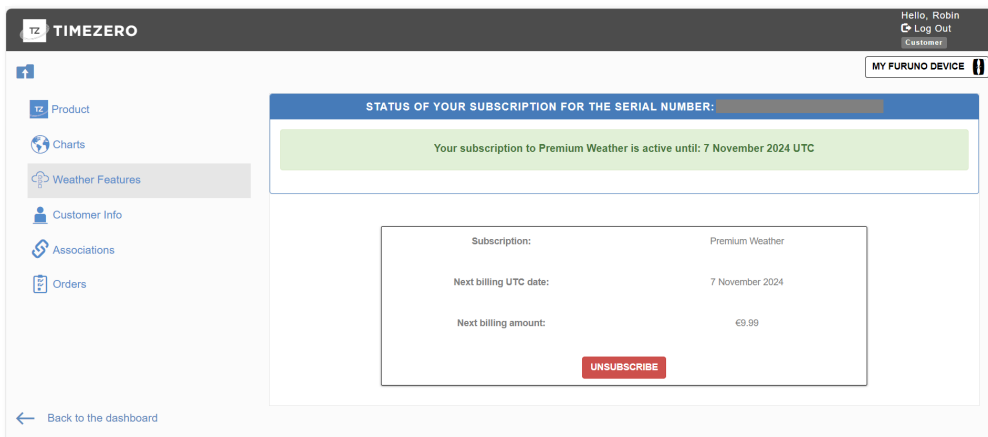
Then click on “My Licenses”:



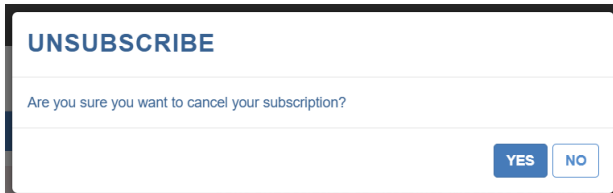
The following page appears:



Simply go to “Weather Feature” to access your Weather subscription.

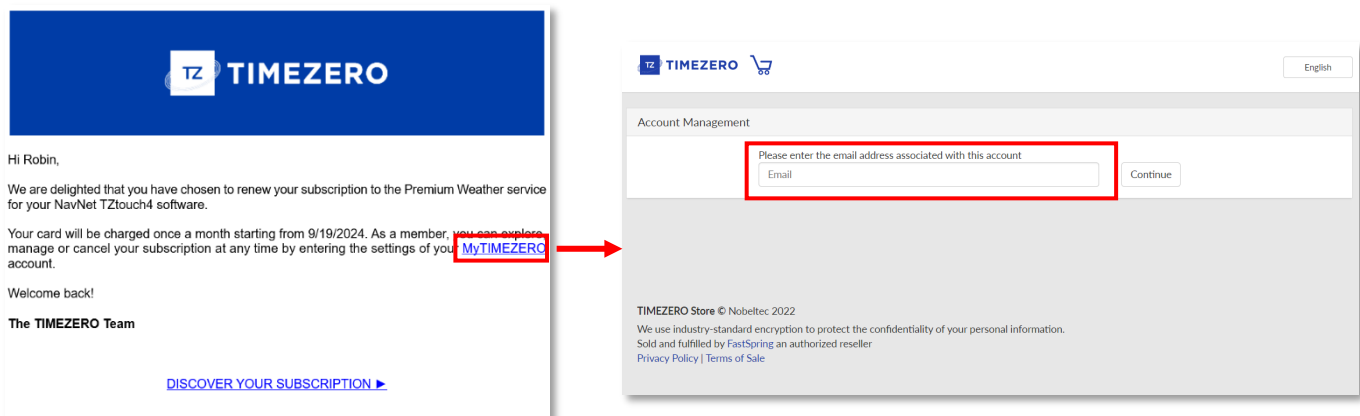


Click on Unsubscribe to get the following confirmation window:

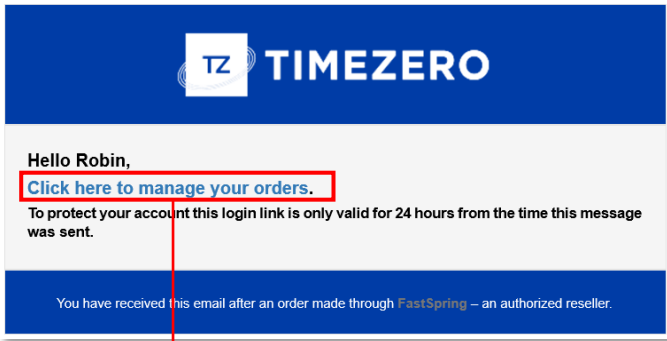


- Link in the mail:

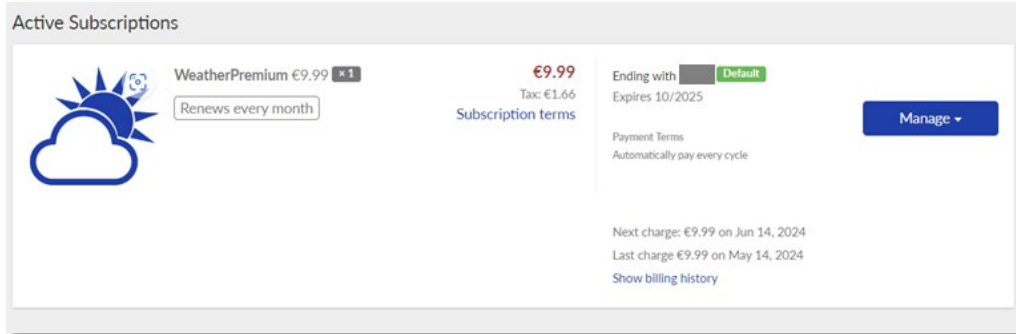
When you subscribed, you received an e-mail from the TIMEZERO team containing a link. Click on the link!



Enter your e-mail address and click “Continue”.
You will soon receive an e-mail with a link to follow.

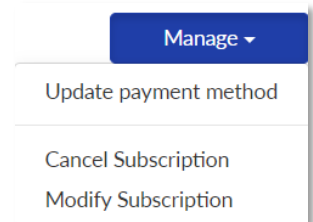


You are redirected to the site that shows your subscriptions:

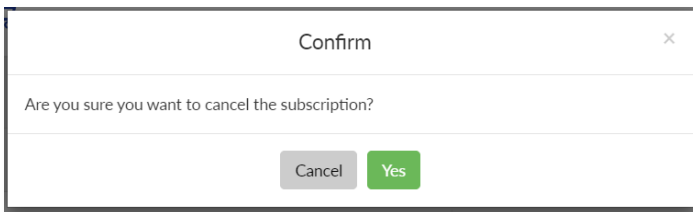


By clicking on the “Manage” button, you can

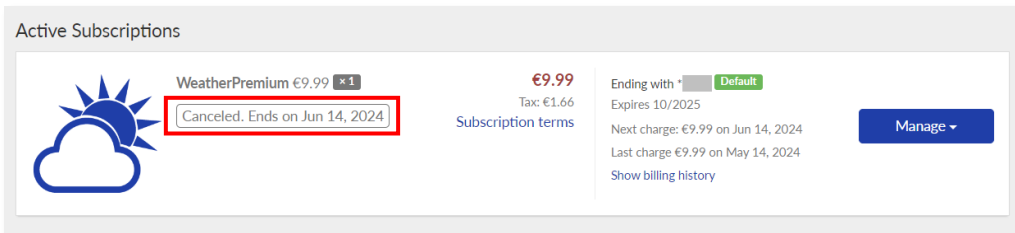
- Update payment method,
- Cancel subscription
- Modify your subscription



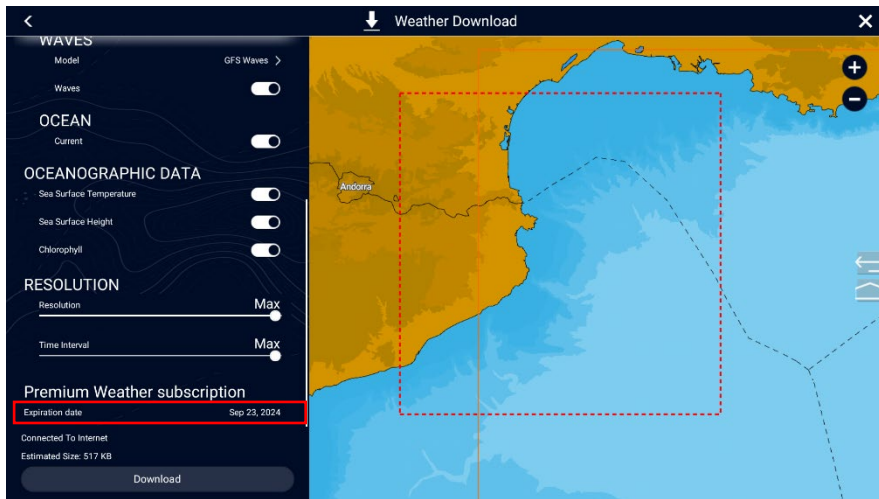
To cancel a subscription, click on “Cancel Subscription” and a confirmation window will appear:



If you click on “Yes”, the active subscriptions will show the date on which the subscription was cancelled.



Note: this date indicates the end of your subscription. In the case of a TRIAL, this date corresponds to the end of the TRIAL. On the other hand, in the case of a subscription where the TRIAL has ended, this date corresponds to the day before the next withdrawal for the Weather Premium subscription. This date is shown at the bottom of the Weather Download page:



Ver- 2/24/2025