

FURUNO

NAVnet

TZ
touchXL

Dynamic Mooring



MOORING

Name	Outside - No Name Harbor
Rating	3 (1 rating) ★★★★☆

EDIT

Update Name

Rate & Comment ★

COMMENTS

★★★★☆
A few months ago.
Troy good holding, protection from north and northeast.
Beautiful view...only complaint is boat traffic

CHANGES HISTORY

added	A few months ago, by Troy (👍 1). Validated.
-------	---

SYNCHRONIZATION STATUS

Synchronized

DEPTH AREA

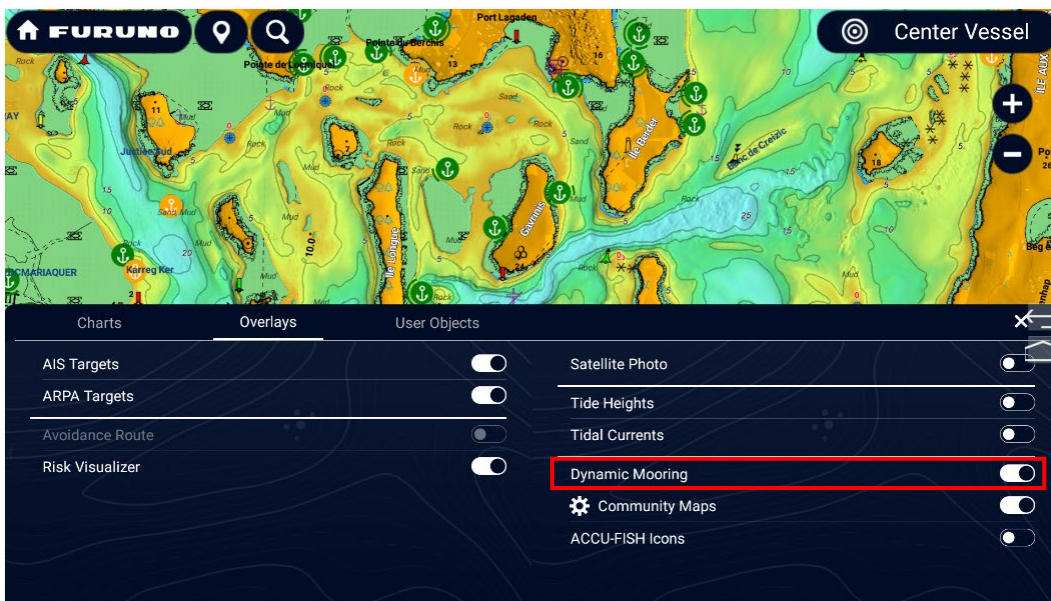
Dpth Rng 1	5.9 ft
------------	--------

TZ MAPS Dynamic Mooring

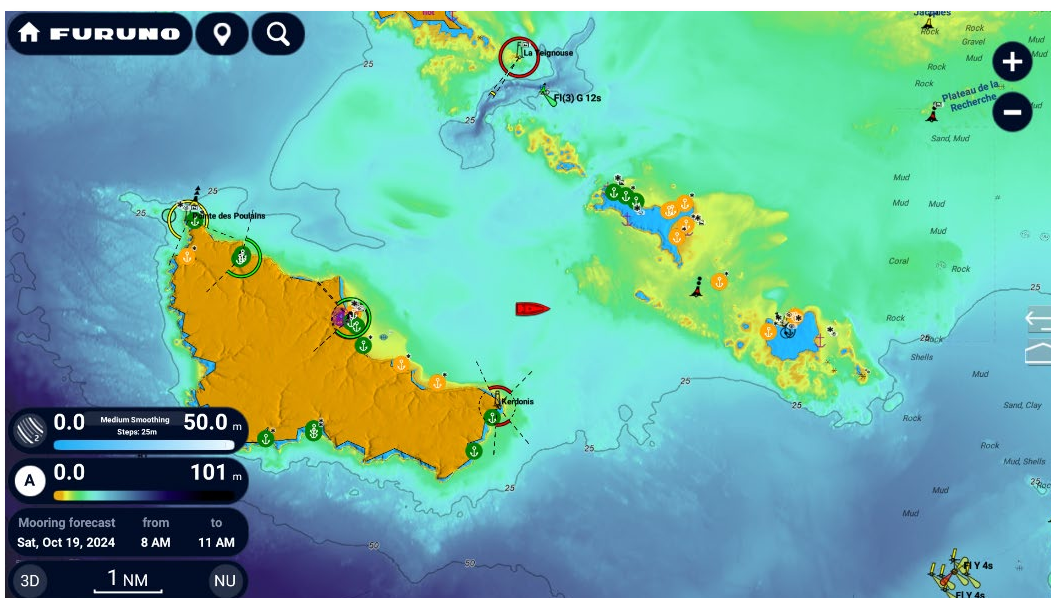
Moorings are classified according to weather forecast and topology. Once a date is selected and a weather forecast becomes available, everything is done automatically. A color code (red, orange, green) dynamically informs you of the upcoming wind protection for the duration of the mooring. Mooring locations are extracted from vector maps but are also created and shared by the TIMEZERO “Community Maps” members.

Display

Moorings are displayed via an on/off button in the Swipe Up Menu in the Overlays section. By default, Dynamic Mooring is Off.








In general, Moorings are present wherever there is a TZ MAP, as demonstrated in the example below.



You can also manually add a mooring: [Mooring Creation](#).

Depending on the weather conditions, the mooring can have three different colors: Green (protected), orange (protected, but not ideal), and red (exposed).

Color Mooring	Green	Orange	Red	Gray	Purple
Signification	Protected Mooring	Relatively calm Mooring	Mooring to be avoid	Calculating...	Missing weather information.
Icons					

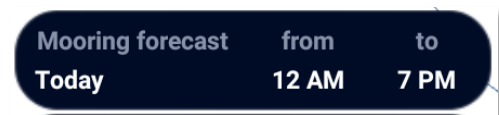
When you zoom in close enough on the map (usually under a mile), the dynamic mooring icon will show more details. If the mooring is close to the coast (around 300 meters or 330 yards), a solid rounded line will indicate the sheltered sector. Arrows pointing toward the anchor symbol represent different hours. For instance, if the wind blows from the same direction during the entire mooring period, only one arrow will be visible, showing that the wind won't change while you are anchored. However, if there are multiple arrows in different locations, it means the wind will shift during that time.



The color of the arrow considers both wind speed and topology. For example, a strong wind coming from a protected direction may still be displayed as a green arrow.

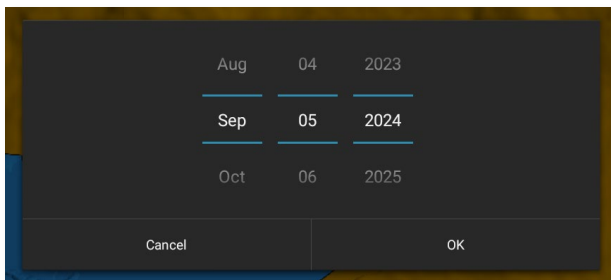
Legend

The legend only appears on the bottom left of the plotter screen if the user turns on Dynamic moorings in the swipe up menu.



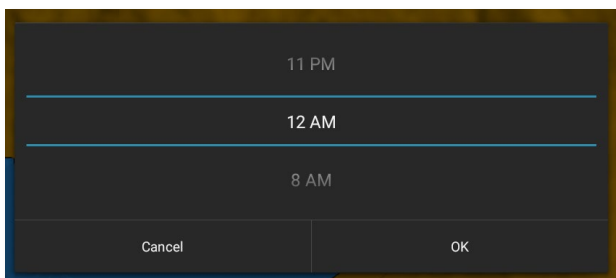
The legend gives the user the option of displaying the time interval during which they plan to anchor, so that NavNet TZtouchXL displays the status of anchorages for this time interval.

When you click on “Today”, a calendar appears.



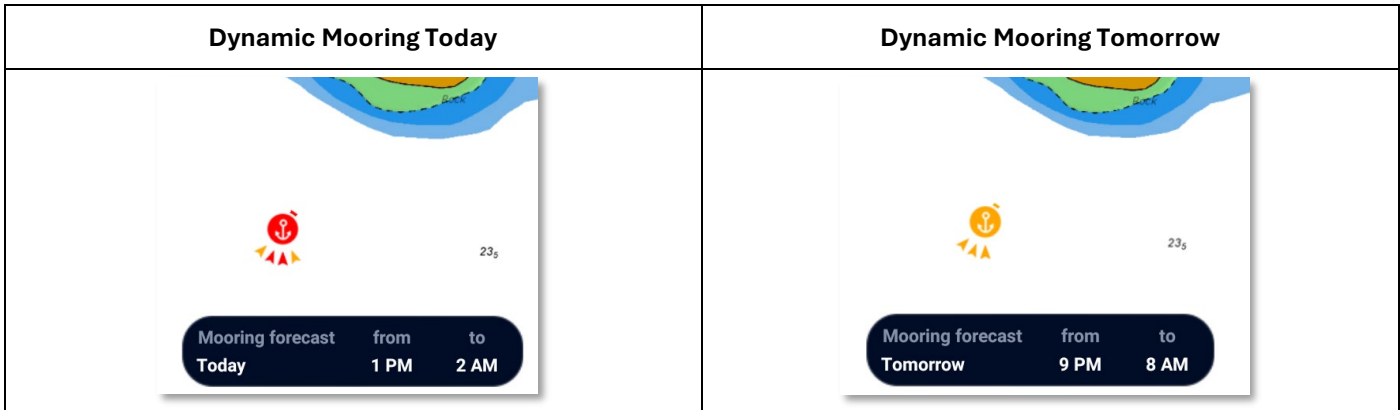
The date selected in the calendar when you open the calendar control is the day shown in the legend. When “OK” is clicked, the “Time Bar” takes on the calendar date and the time selected next to it.

When you click on “From” and “To”, the hours of the day are proposed to the user.



When the user changes the “from”, the Time Bar takes the calendar date + the “from” time. However, changing the Time Bar date does not change the legend date.

When using this function, be sure to set the appropriate date and time interval. Weather conditions can change and have an impact on the mooring recommendation:



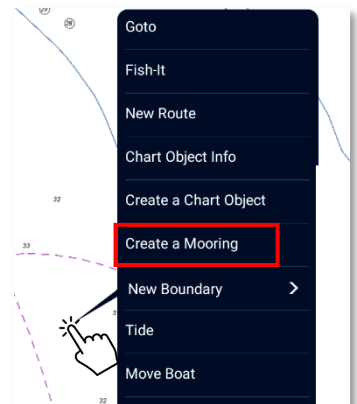
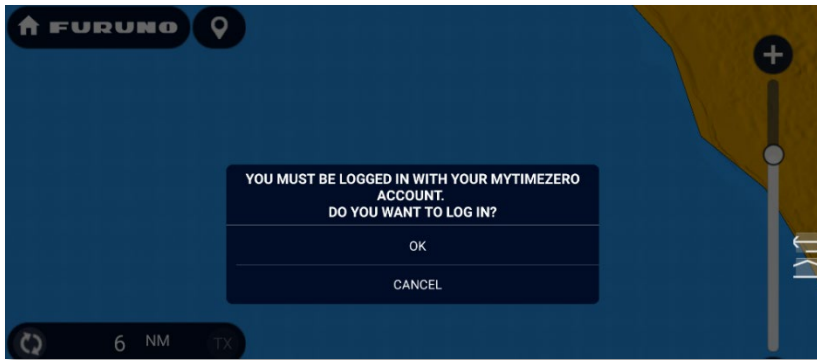
Tooltip

Chart Object Information

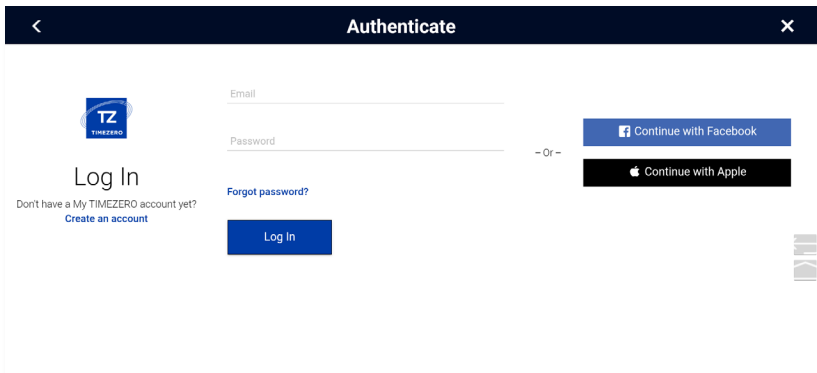
Mooring locations are initially extracted from vector chart data, but users can enhance this data by modifying existing moorings (e.g., moving a mooring to a more precise location) or by creating entirely new moorings. Behind the scenes, community maps are used to store all these modifications.

Mooring Creation

You must be logged in to create a mooring. If not, a dialog box will prompt you to log in:

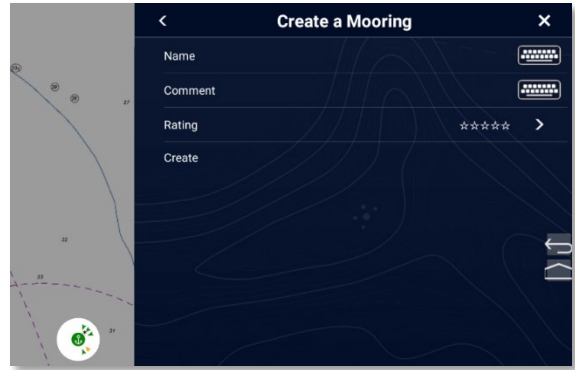


By clicking OK, you will be redirected to the authentication/Log In page:



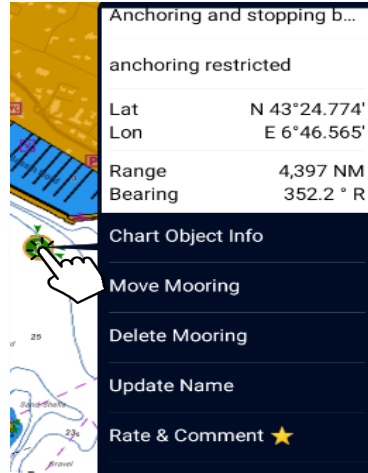
When you tap on “Create a Mooring”, a panel appears for you to provide details about the mooring: a name, a comment, and a rating. This information is not mandatory to create a mooring.

The mooring appears on the map with a star (like community objects).

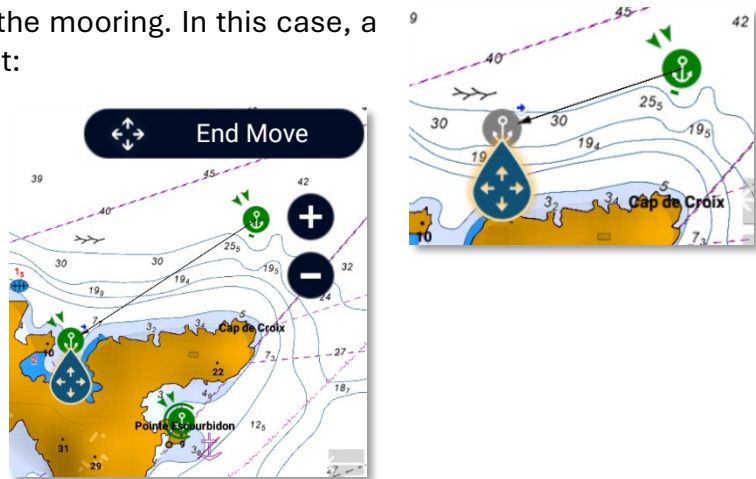


Mooring Modification

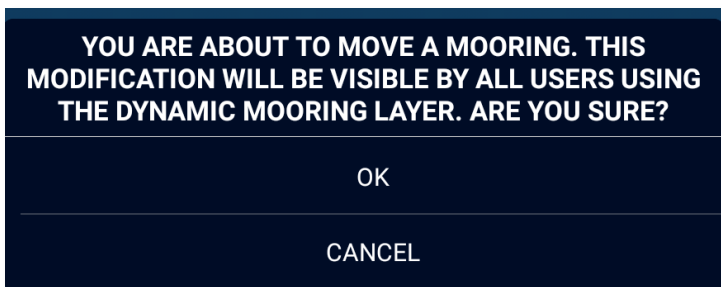
The following actions are possible on a mooring:



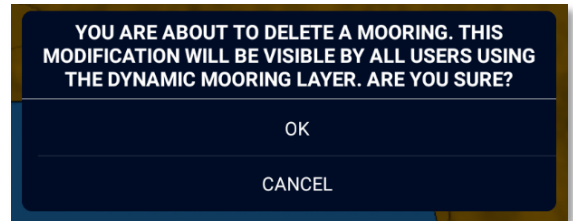
- **Move Mooring:** allows you to move the mooring. In this case, a droplet appears, and you can move it: Note that when you move the mooring, it will turn grey as you move it while it is being calculated.



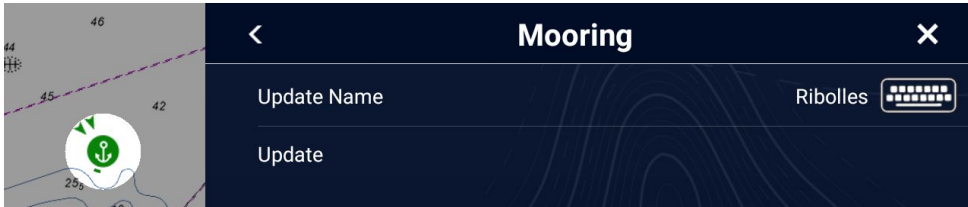
Once you've made your move, press the “End Move” button to confirm the modification. A confirmation box will appear:



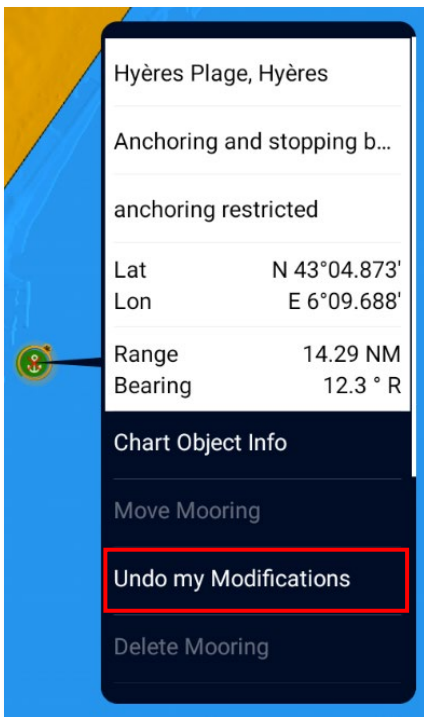
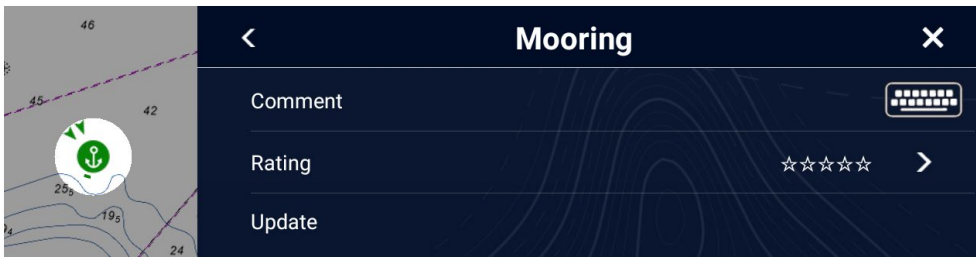
- **Delete Mooring:** deletes the mooring. A confirmation message appears:
A red cross appears on the deleted object.



- **Update Name:** updates the object name.



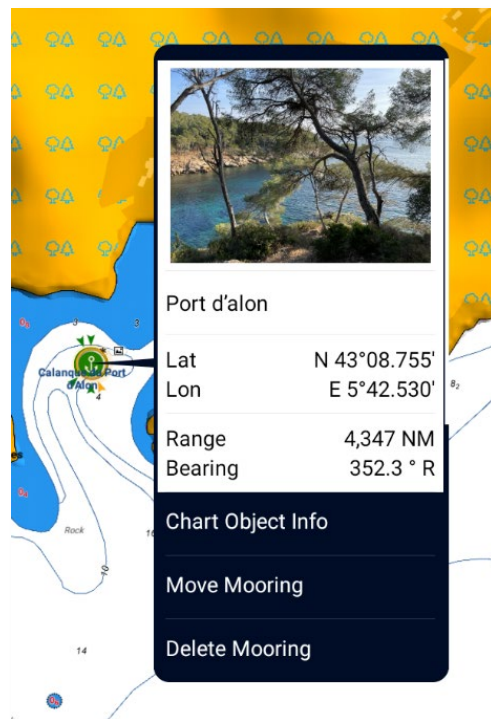
- **Rate & Comment:** This feature lets you add stars and leave comments for the object.



Note: any modification made to a mooring can be undone. To do this, simply click on “Undo my Modifications”.

Mooring Information

If a mooring contains a photo added by a user, it will appear at the top of the tooltip:



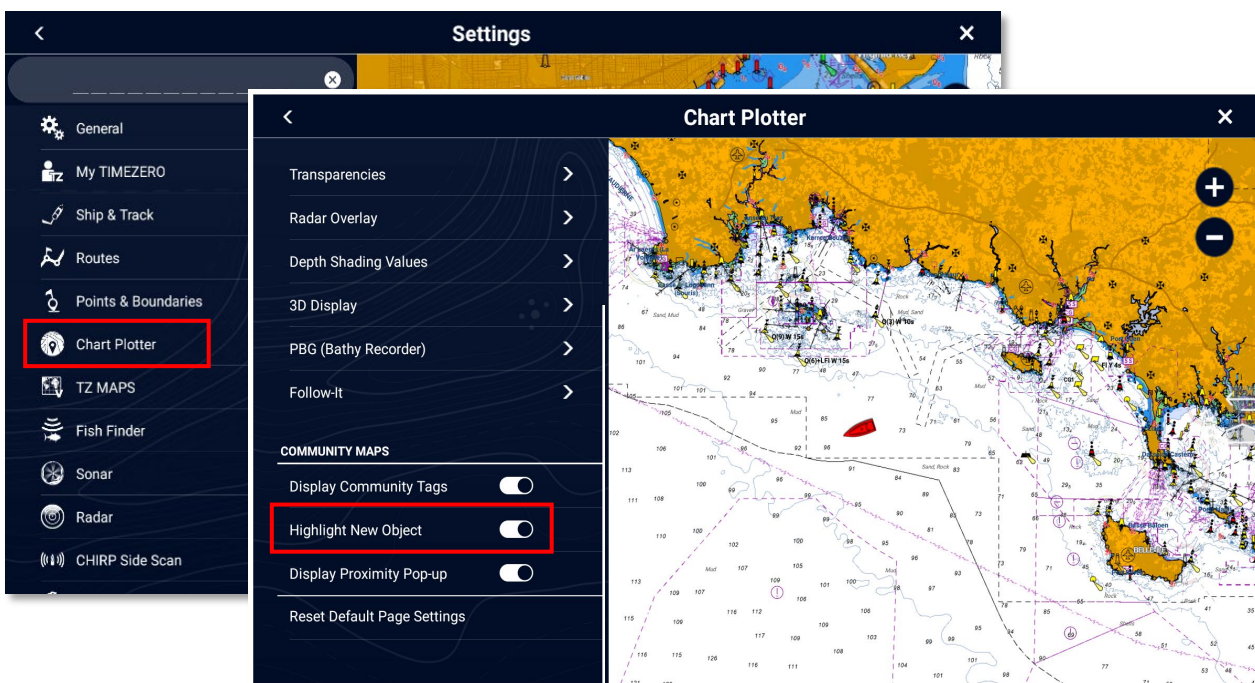
Behavior of created moorings

Added moorings function in the same way as a new community object:

- Flashes when a new Object

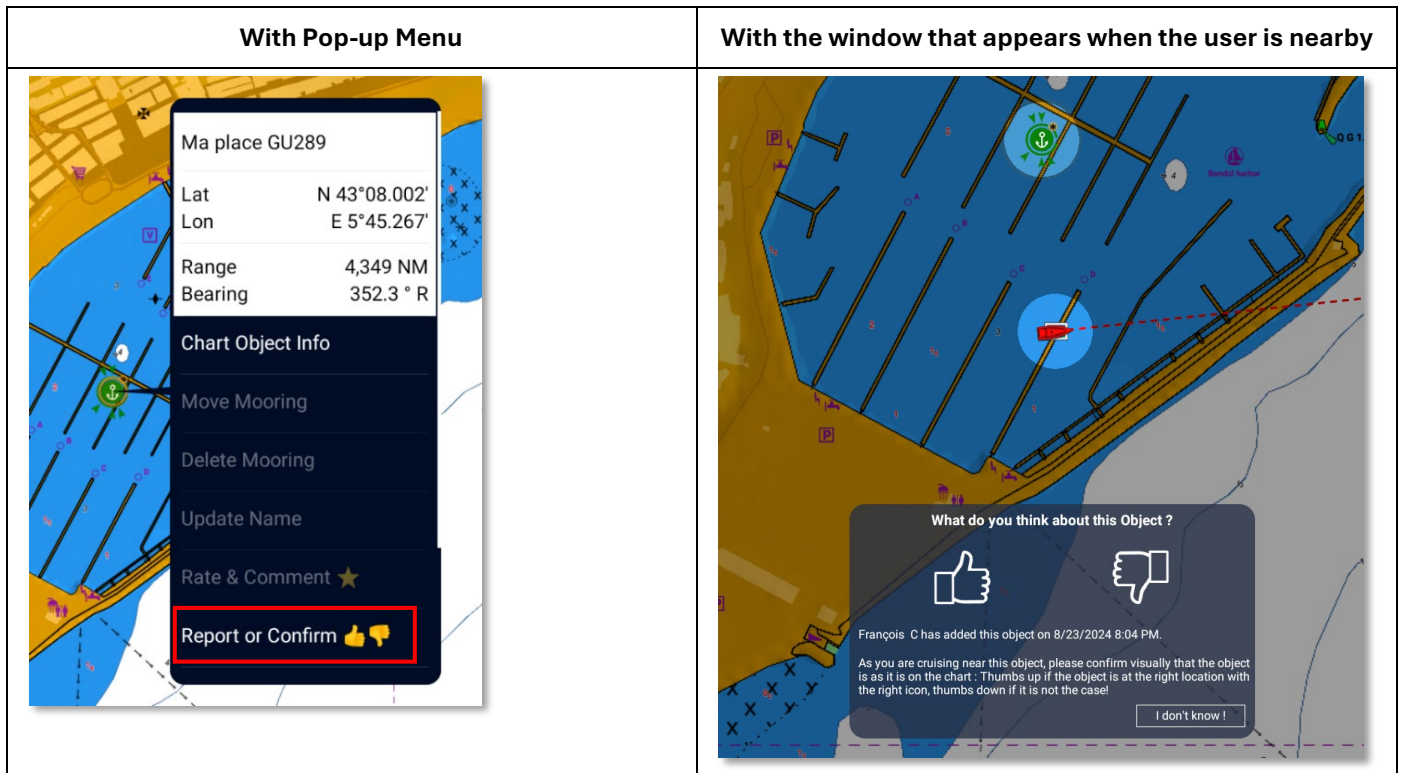
These new objects are highlighted to indicate to any user the location of a recently modified or created object.

Note: If you prefer not to have this behavior, go to Settings > Chart Plotter and disable “Highlight New Object” in the Community Maps section.



- Opportunity to comment on modifications

Like all community objects, users can give their opinion on a new mooring or on changes made to an existing mooring.



Mooring information

This information is available by using the Chart Object Info in the Tooltip: you then have a summary of the information relating to the mooring selected.

