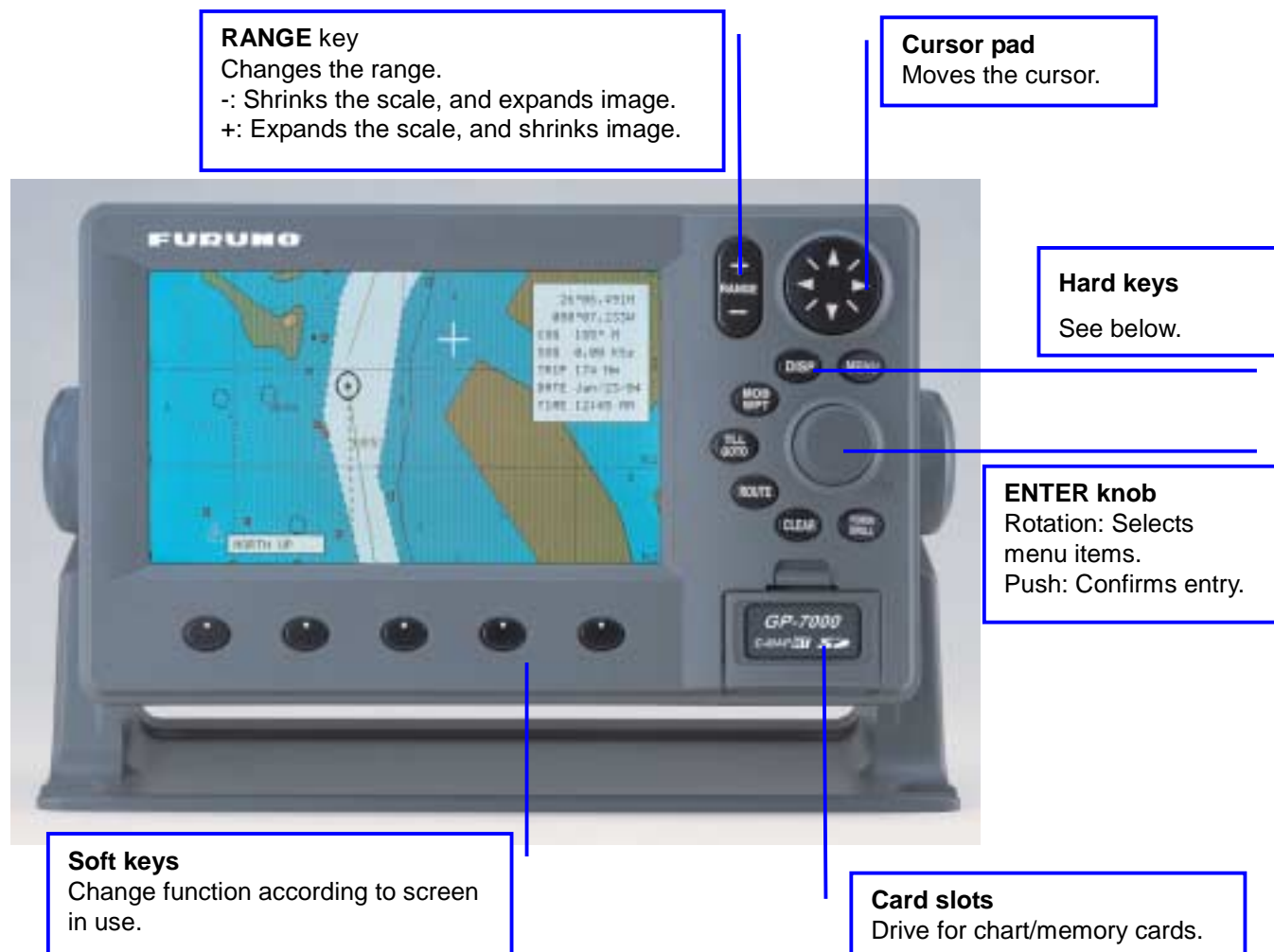


COLOR GPS/PLOTTER GP-7000

Operator's Guide

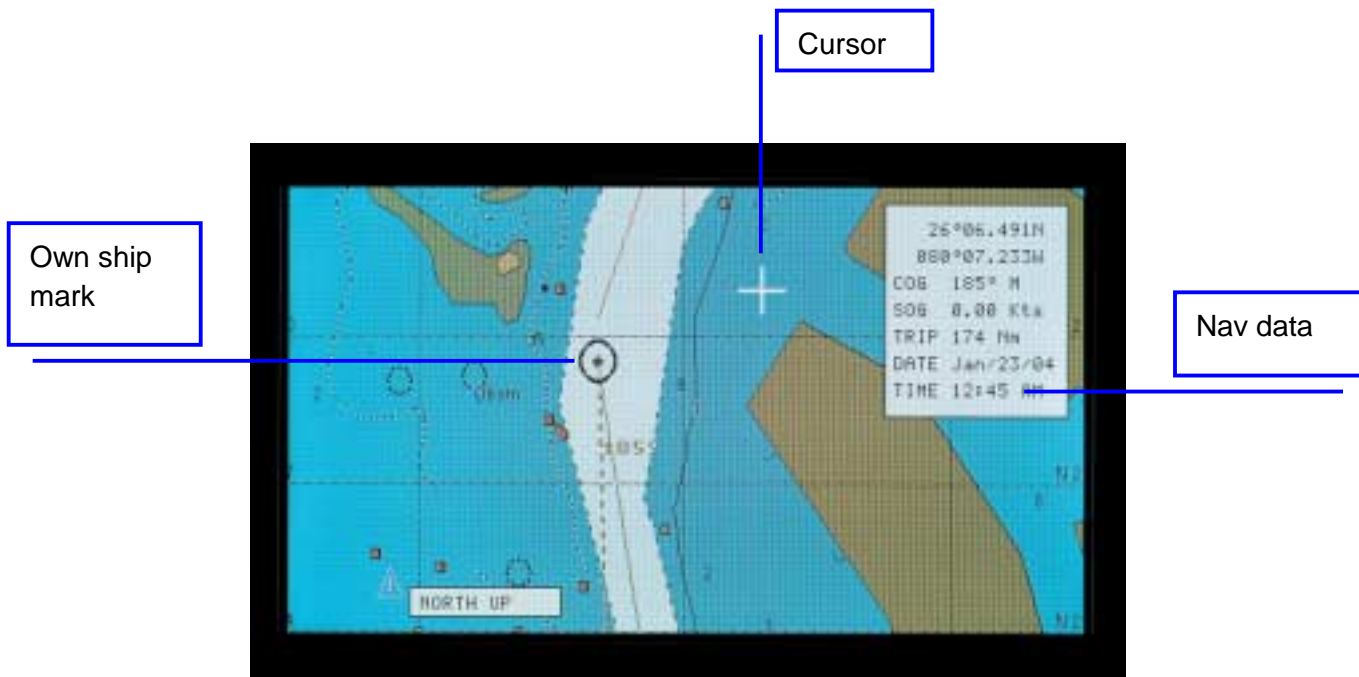
The purpose of this Operator's Guide is to provide basic operating procedures for this equipment. For more detailed information see the Operator's Manual.



(Hard keys)

Key name	Function
MENU key	Shows/hides the menu bar.
DISP key	Shows/hides DISPLAY MODE menu.
MOB/WPT key	Short press: Enters a waypoint. Long press: Enters the MOB mark.
TLL/GOTO key	Sets the waypoint or route as destination.
ROUTE key	Creates the route.
CLEAR key	Silences the audible alarm; erases the various windows one by one.
POWER/BRILL key	Long press: Turns power off. Short press: Turns power on. Shows the BACKLIGHT window.





Plotter display

Returning Own Ship to Screen Center

Press the **CENTER** soft key.

Adjusting Brilliance

1. Press the **BRILL** key to show the BACKLIGHT window.



2. Rotate the **ENTER** knob to adjust the brilliance.
3. Push the **ENTER** knob to close the window.

Entering Waypoints

1. Operate the cursor pad to place the cursor at the position desired.
2. Press the **MOB/WPT** key. Finally, press the **SAVE** soft key.

Entering Routes

1. Operate the cursor pad to place the cursor at the position desired.
2. Press the **ROUTE** key, and then press the **SAVE** soft key.
3. Repeat steps 1 and 2 to complete the route.

Setting Destination

Operate the cursor pad to place the cursor on the waypoint you want to go, and then press the **GOTO** key.

Setting Arrival Alarm

1. Press the **MENU** key.
2. Choose ALARMS from the menu bar, and then push the **ENTER** knob.
3. Choose ARRIVAL ALARM and then push the **ENTER** knob.
4. Rotate the **ENTER** knob to choose the value, and then push it.
5. Enter the alarm range and then press the **SAVE** soft key.