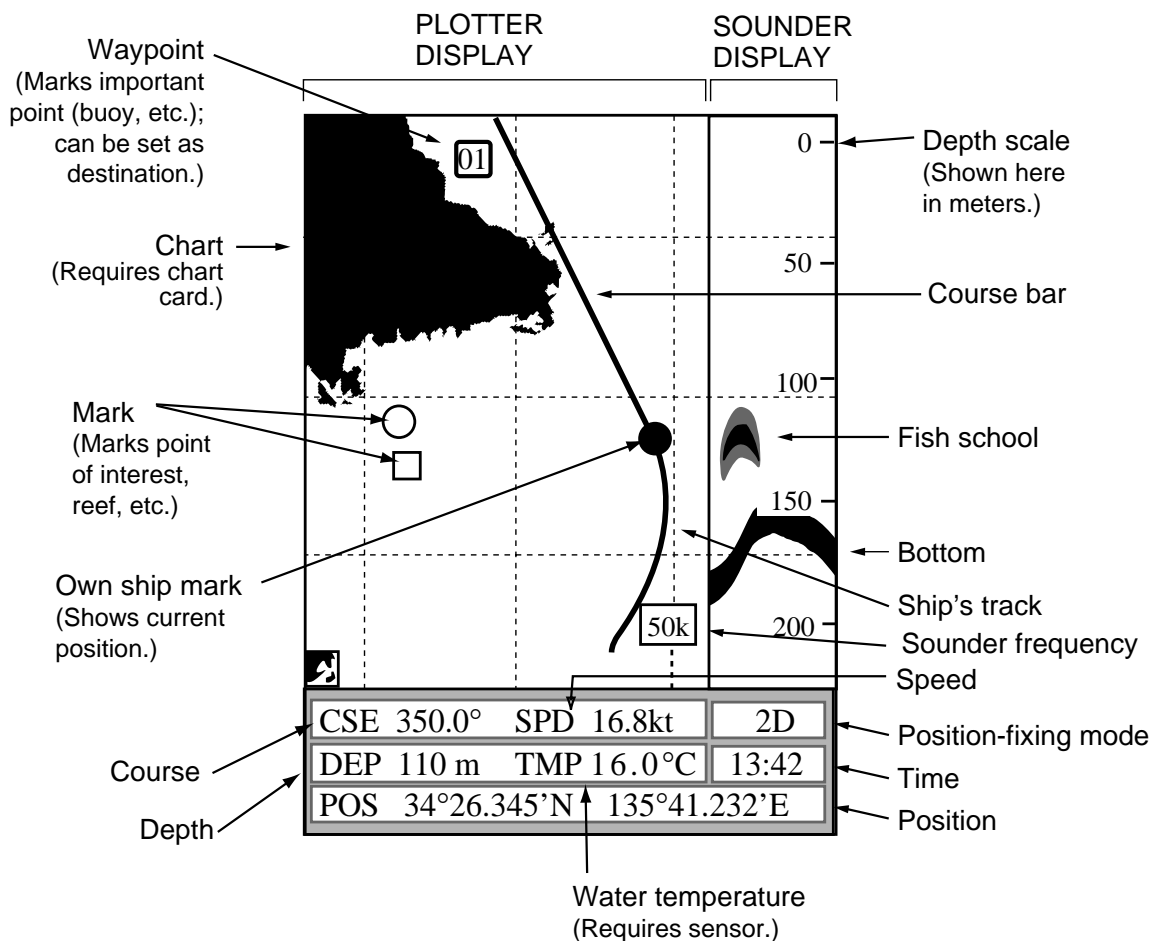


GP-1610CF

Color GPS Plotter Sounder

The purpose of this Operator's Guide is to provide the basic operating procedures for this equipment. For more detailed information see the operator's manual.



Sample plotter/sounder display

The GP-1610CF is a fully integrated color video sounder, color video plotter and GPS receiver. To find position, simply turn on the power. As your boat moves its track is inscribed on the display.





SAFETY INSTRUCTIONS



WARNING



Do not open the equipment.

Hazardous voltage which can cause electrical shock, burn or serious injury exists inside the equipment. Only qualified personnel should work inside the equipment.

Do not disassemble or modify the equipment.

Fire, electrical shock or serious injury can result.

Turn off the power immediately if water leaks into the equipment or the equipment is emitting smoke or fire.

Continued use of the equipment can cause fire or electrical shock.

Do not place liquid-filled containers on the top of the equipment.

Fire or electrical shock can result if a liquid spills into the equipment.

Do not operate the equipment with wet hands.

Electrical shock can result.

Keep heater away from equipment.

Heat can alter equipment shape and melt the power cord, which can cause fire or electrical shock.



CAUTION

Use the proper fuse.

Use of a wrong fuse can result in fire or permanent equipment damage.

GPS position and velocity accuracies are controlled by the U.S. Department of Defense. Position may be degraded up to 100 meters.

Do not use the equipment for other than its intended purpose.

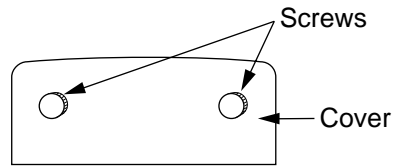
Personal injury can result if the equipment is used as a chair or stepping stool, for example.

Do not place objects on the top of the equipment.

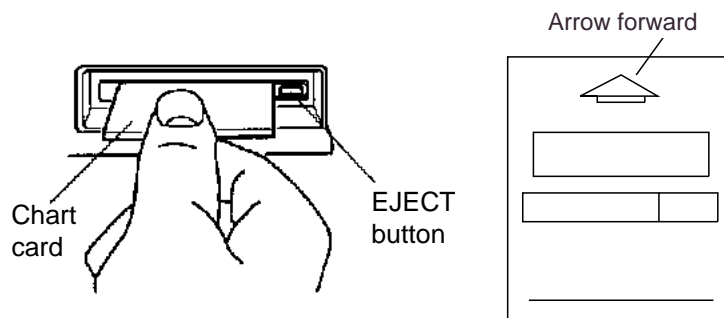
The equipment can overheat or personal injury can result if the object falls.

Inserting a Chart Card

- ① Turn off the power.
- ② Open the chart card drive cover at the bottom of the display unit.



- ③ Insert chart card label side up, arrow forward.



- ④ Close the chart card drive cover.

To eject a chart card:

- ① Open the chart card drive cover.
- ② Press the EJECT button.

Note: If no chart card is inserted a general world map appears.

Displaying the Plotter Picture

Press the POWER key to turn on the equipment. A beep sounds and shortly thereafter the plotter display appears.

① Press the POWER key.

Results of self-test; displayed for about one second.

```

ROM      OK
RAM      OK
VRAM     OK
Battery  OK

Program No. = 02522531**
Base Chart No. =
    
```

Warning on chart card usage; appears for about one minute.

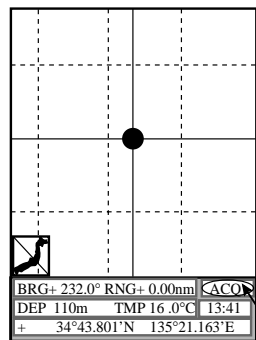
```

--- WARNING ---

NO NATIONAL HYDROGRAPHIC
OFFICE HAS VERIFIED THE
INFORMATION IN THIS COASTLINE
DATA CARD AND NONE ACCEPT
LIABILITY FOR THE ACCURACY OF
REPRODUCTION OR ANY
MODIFICATIONS MADE THEREAFTER.
THIS PRODUCT WITH THIS
COASTLINE DATA CARD DOES NOT
REPLACE THE REQUIREMENT TO
USE THE APPROPRIATE PRODUCTS
FOR NAVIGATION ACCORDING TO
NATIONAL AND INTERNATIONAL
REGULATIONS.

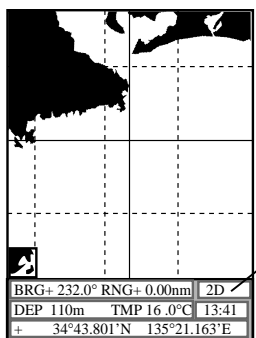
FURUNO ELECTRIC CO., LTD.
    
```

Plotter display
(Position being calculated.)

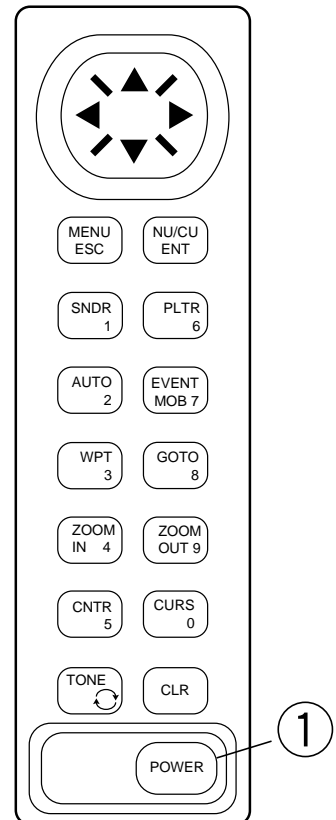


ACQ means acquiring satellite; position is not reliable.

Plotter display
(Position now reliable. Chart appears about 20 sec after power is turned on. At initial power on it takes two minutes.)



2D or 3D means position is reliable. Confirm this indication before using the equipment.



Adjusting Tone and Brilliance

① Press the TONE key.

Adjust tone or brilliance within 10 seconds, otherwise the display will be erased.

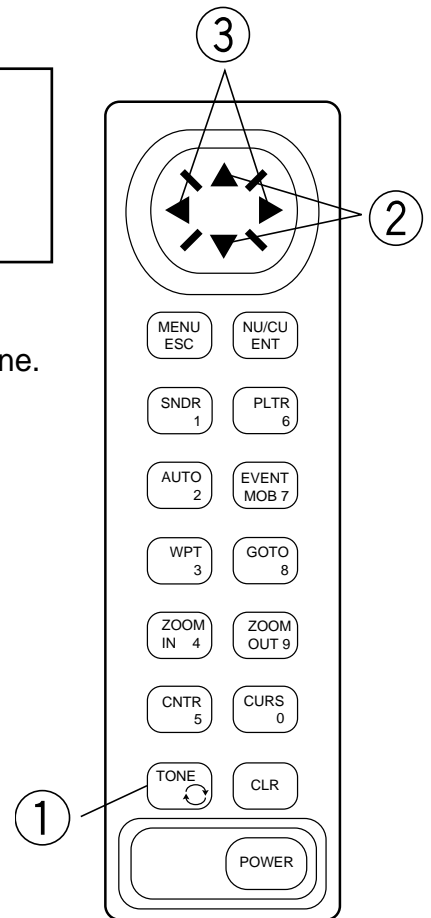
Ten levels of tone are provided.

Eight levels of brilliance are provided.



② Press ◀ or ▶ to adjust tone.

③ Press ▲ or ▼ to adjust brilliance.



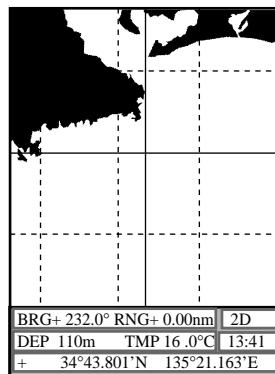
Changing the Display

There are ten displays. Below is the procedure for how to display the three most common displays.

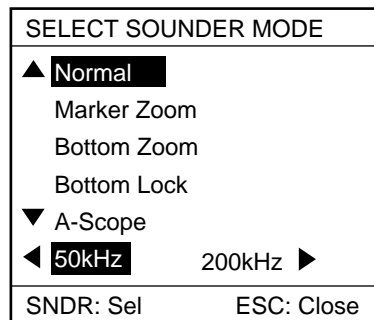
The plotter display is currently shown. This display shows chart, ship's track (when ship moves), etc.

Switch to the normal sounder display.

Confirm that "Normal" appears in reverse video. If it does not, press ▲ to do so.

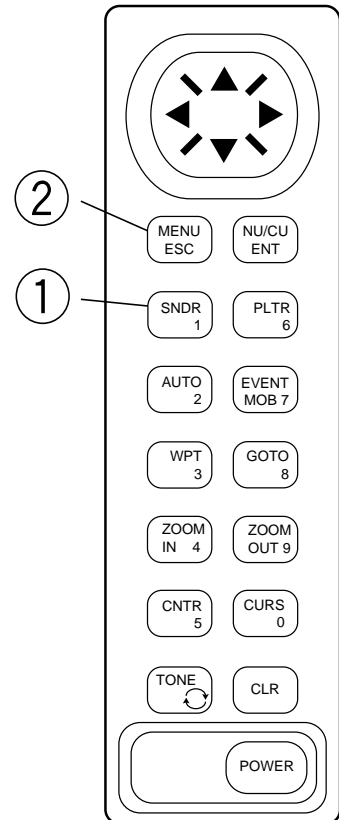
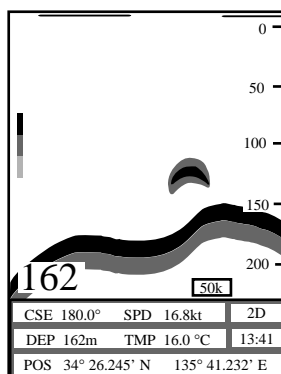


① Press the SNDR key.



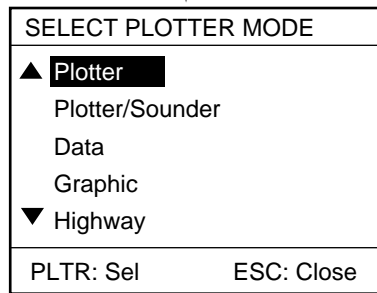
② Press the ESC key.

The sounder display shows underwater conditions.

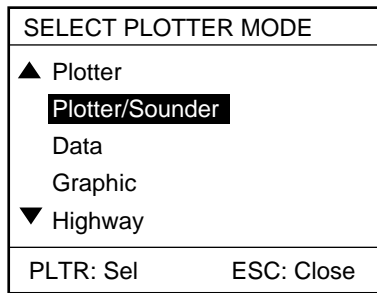


Switch to the plotter/sounder display.

③ Press the PLTR key.

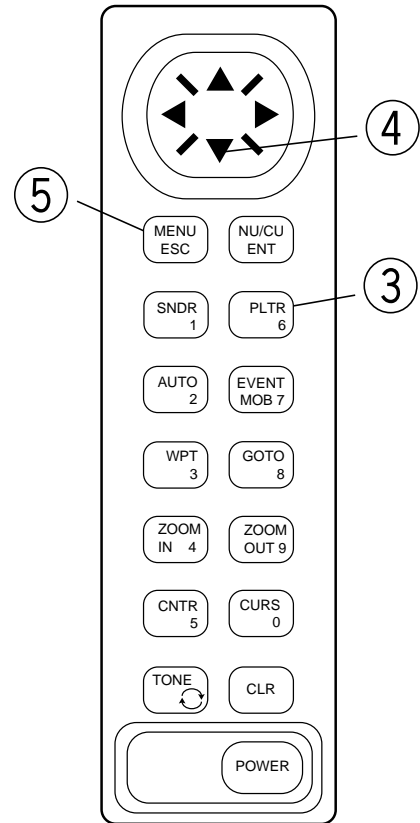
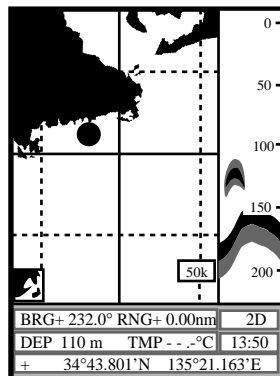


④ Press ▼ to select Plotter/Sounder.



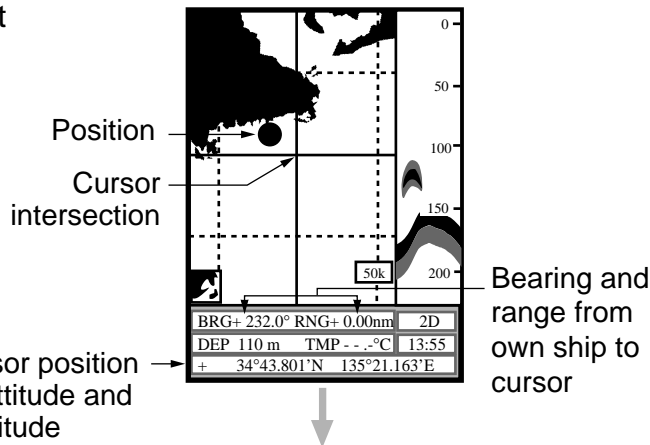
⑤ Press the ESC key.

The plotter display is shown on the left 2/3 of the screen; the sounder display on the right 1/3.



How to Use the Cursor

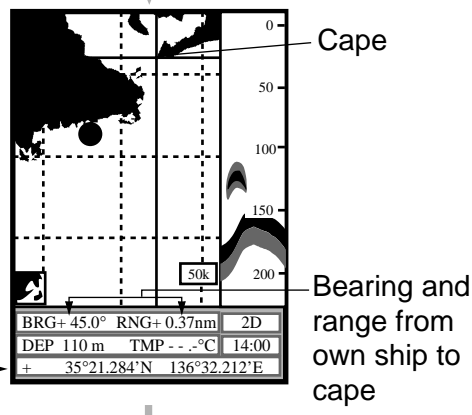
If the cursor is not displayed press the CURS key.



① Press ▲ ▼ ◀ ▶

Find the position of a cape.

Cursor position is digitally displayed on the screen.

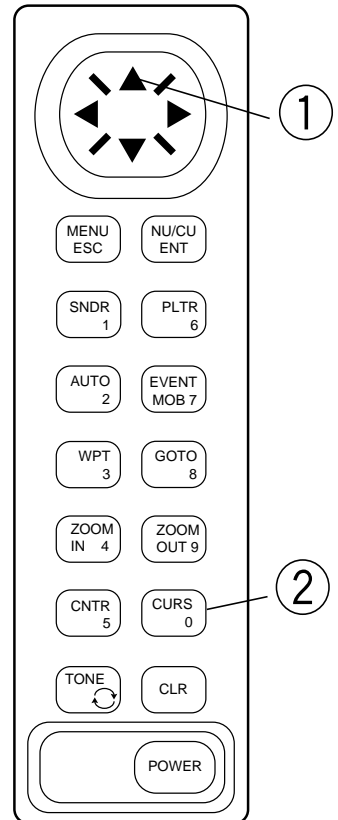
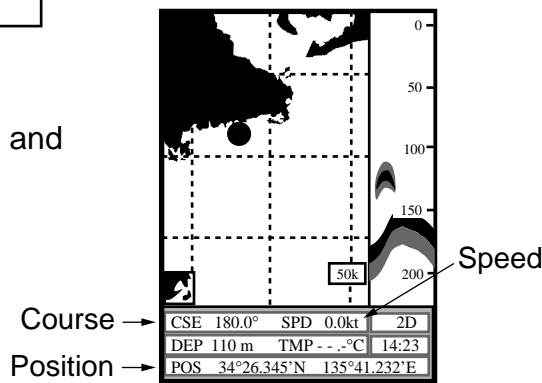


Latitude and longitude position of cape →

② Press the CURS key.

Turn off the cursor.

The CURS key alternately displays and erases the cursor.



Registering Your Harbor

By registering your harbor as a waypoint, you can later use it as a destination waypoint, when returning home.

Before departing register your harbor as a waypoint.

Confirm that "Own Position" is in reverse video. If it is not, press ▲ to do so.

① Press the WPT key.

SELECT WPT MODE	
▲ Own Position	
Cursor	
WPT List	
▼ Event to WPT	
ENT: Sel ESC: Cancel	

② Press the ENT key.

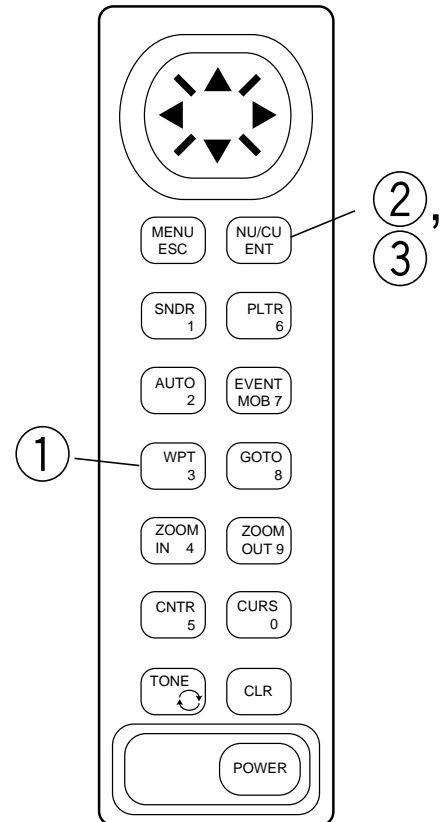
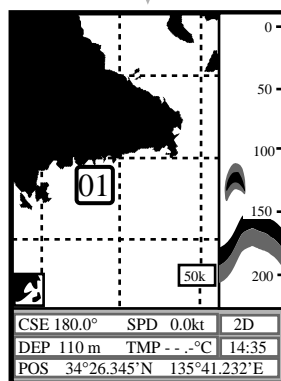
WPT at Own Position	
LAT: 34°26.345'N	
LONG: 135°41.232'E	
No: 001	
MARK: --	
CMNT: 27MAR97 14	
◀▶: Cursor ▼: Column	
ENT: Enter MENU: Sel Mode	

Date and time of entry appears.

③ Press the ENT key.

WPT 01 is displayed at own ship's position. Waypoints can be automatically entered in sequential order.

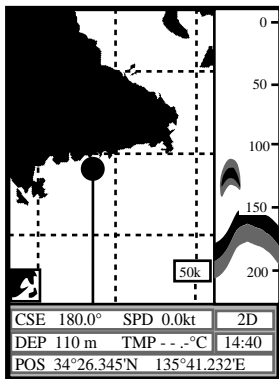
To erase a waypoint, place the cursor on it and press the CLR key.



Setting Destination

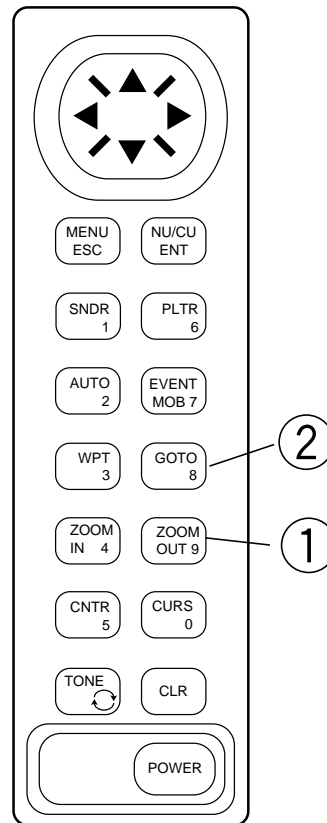
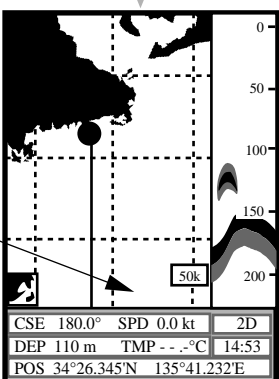
When you set a destination, this unit computes the range, bearing and course to the destination. To display your destination on the screen select a small display range or scale. To set as destination a point which is 20 nm from your harbor do the following:

Shrink display range or scale.



① Press the ZOOM OUT key.
Press until position for destination appears.

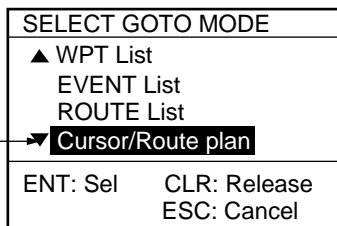
Destination point



Set point as destination.

② Press the GOTO key.

If "Cursor/Route plan" is not in reverse video, press ▼ to do so.

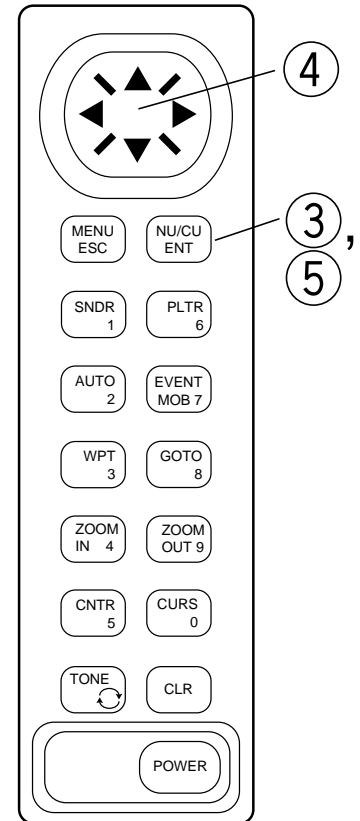



③ Press the ENT key.

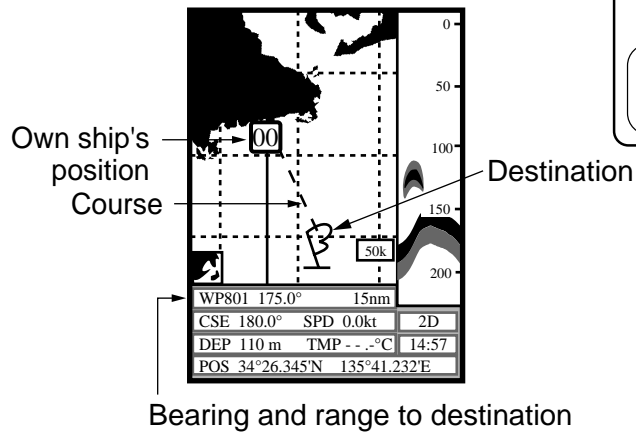
▲▼◀▶: Cursor
ENT: Set
ENT twice: complete
MENU: SEL Mode

④ Place cursor on destination.

⑤ Press the ENT key twice.



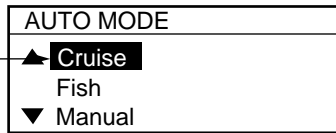
Current position is marked as "00" and the destination with a flag . A dashed line connects current position and the flag; it shows shortest course to destination. Bearing and range to the destination appear at the bottom of the screen.



Sailing for Destination

Set the sounder in the "Cruise" mode before leaving the harbor.

① Press the AUTO key.



If Cruise is not in reverse video press ▲ to do so. The Cruise mode suppresses weak echoes and displays strong echoes (such as the bottom) clearly.

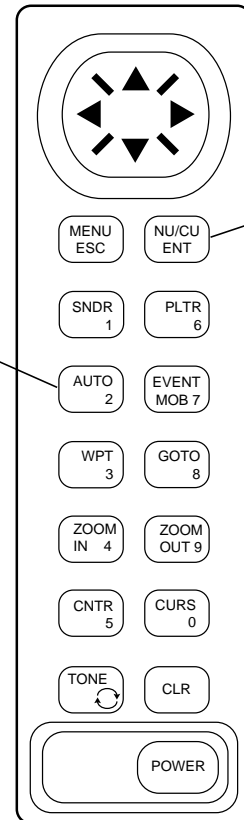
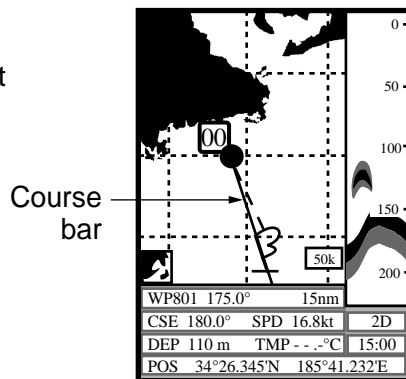
② Press the ENT key.



Steer towards destination.



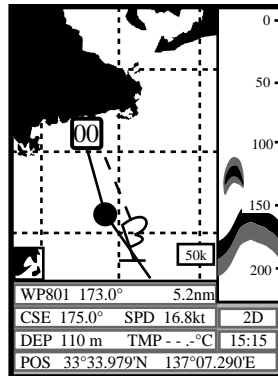
Steer the boat so its track traces along the course bar, for shortest course to destination.



Arriving at Destination

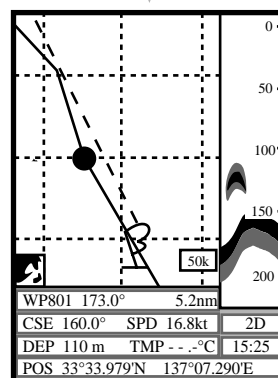
When nearing your destination, expand the range scale and set the sounder in the "Fish mode."

Expand the display range or scale.



① Press the ZOOM IN key.

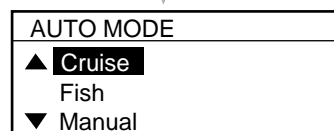
Press the key to obtain detailed view of arrival area.



Set sounder Fish mode.

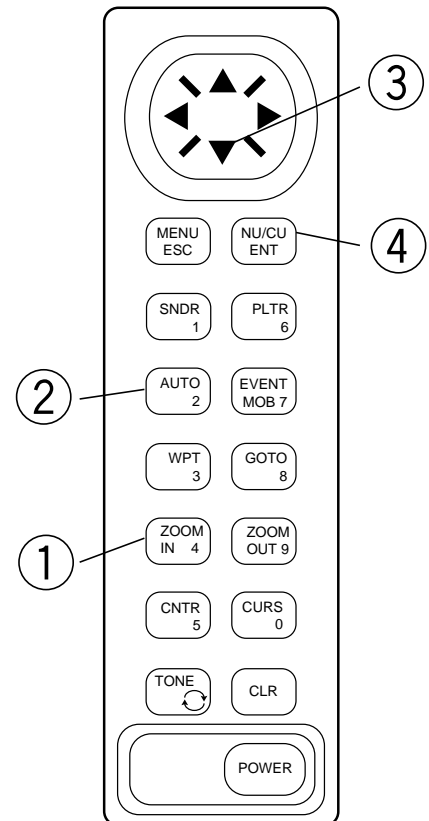
The AUTO mode displays weak echoes such as fish clearly.

② Press the AUTO key.



③ Press ▼ to select Fish.

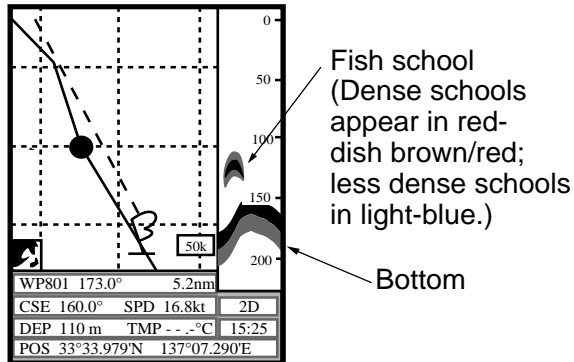
④ Press the ENT key.



Searching for Fish

This section explains how to search for fish schools.

Use 50 kHz frequency to search area for fish. If the display shows fish echoes switch to 200 kHz to obtain detailed view.

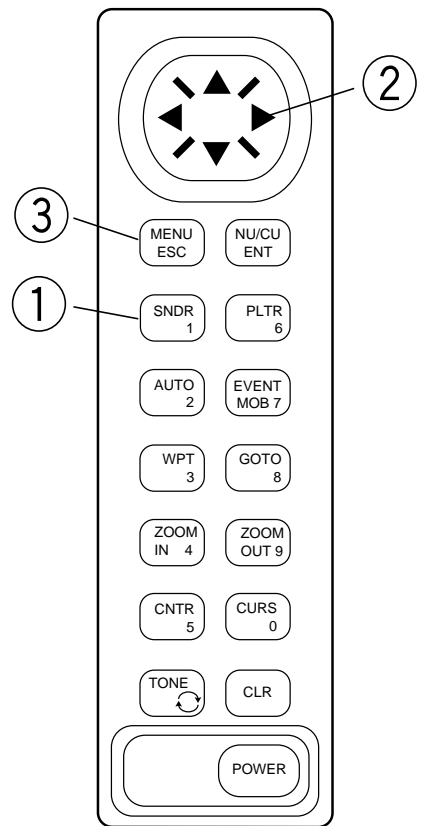
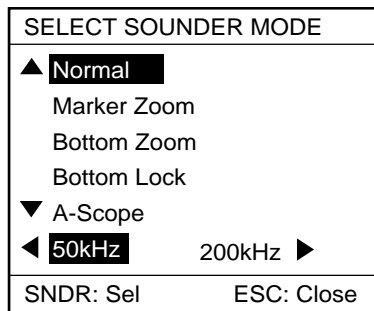


Fish school (Dense schools appear in red-dish brown/red; less dense schools in light-blue.)

Bottom

Switch to 200kHz.

① Press the SNDR key.



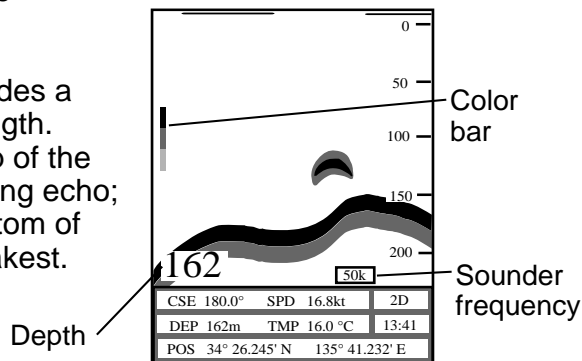
To return to 50 kHz, press ◀.

② Press the ▶ key.

③ Press the ESC key.

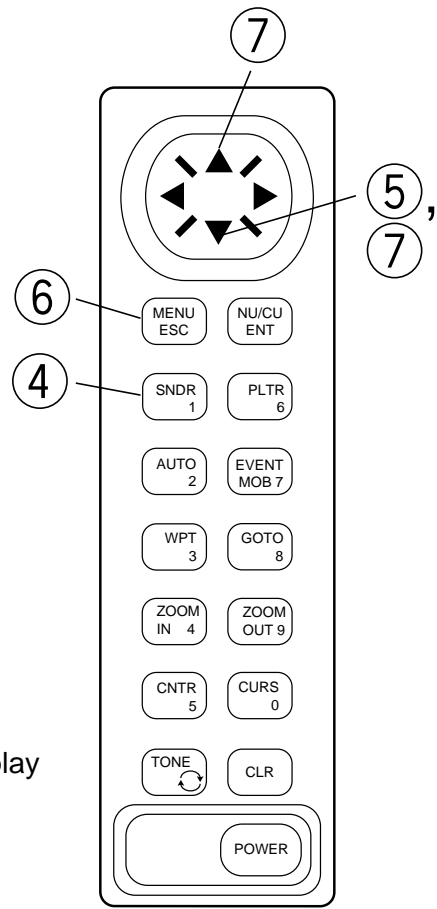
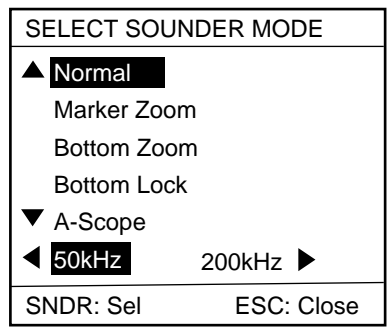
If fish echoes show at 200 kHz it is likely there are fish beneath the boat.

The color bar provides a guide to echo strength. The color at the top of the bar indicates a strong echo; the color at the bottom of the bar the the weakest.



Select the bottom zoom display.

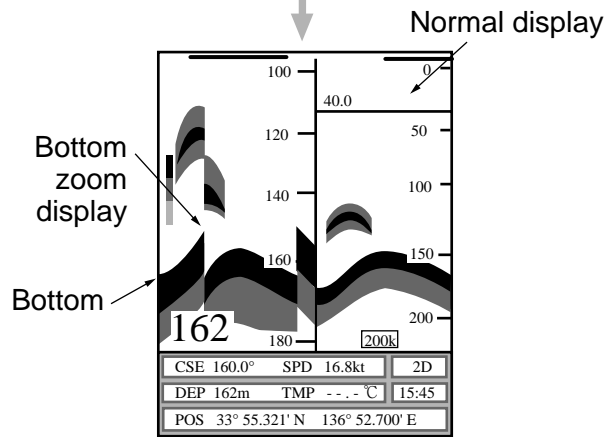
④ Press the SNDR key.



⑤ Press ▼ twice to select Bottom Zoom.

⑥ Press the ESC key.

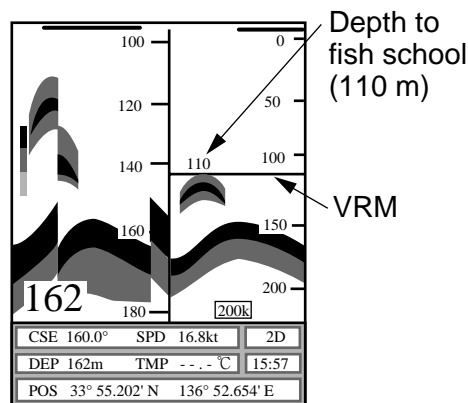
The bottom zoom display magnifies the normal display three times. It is useful for knowing bottom material and hardness.



Measure depth to fish school.

⑦ Press ▲ or ▼ to place VRM on fish school or bottom.

The VRM provides instant recognition of depth to bottom or fish.



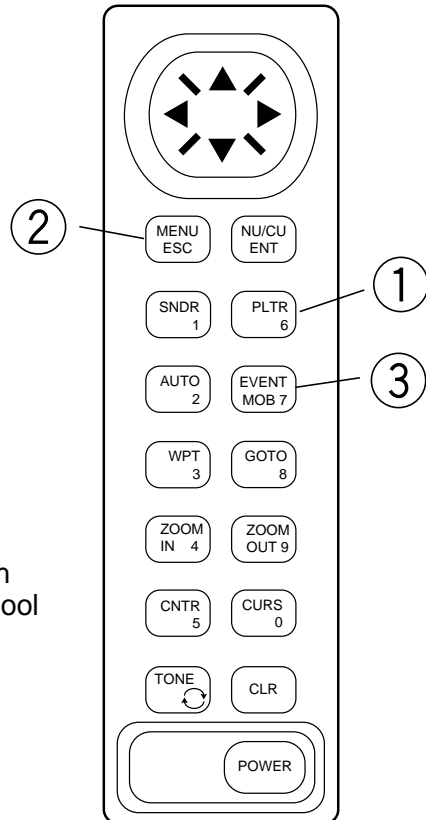
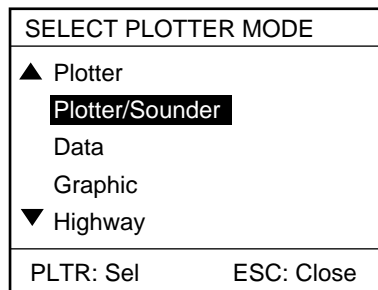
Entering Marks

Marks may be used to denote the location of fish schools, good fishing spots, reefs, etc.

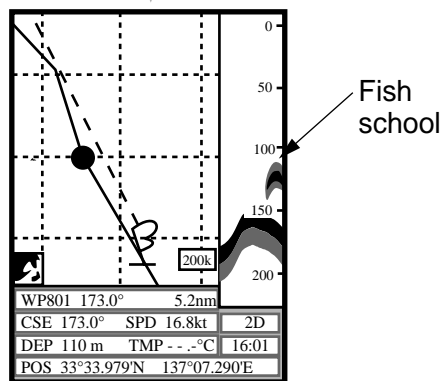
Display the plotter/sounder mode.

Marks cannot be entered when in a sounder mode.

① Press the PLTR key.



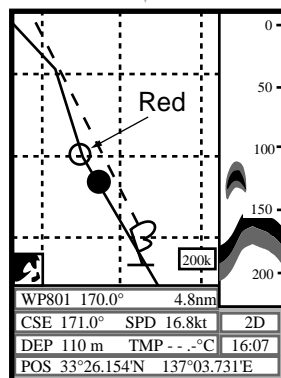
② Press the ESC key.



③ Press the EVENT key.

A red circle (default color and shape) appears at own ship's position the moment the key is pressed.

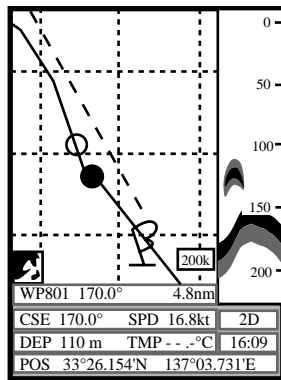
Note: When the cursor is displayed a mark is entered at the cursor position.



To erase a mark, place the cursor on it and press the CLR key.

Changing Mark Shape, Color

You may wish to display marks in different shapes and colors to differentiate between reefs and fish schools, for example. The procedure below shows how to change from red circle to green diamond.

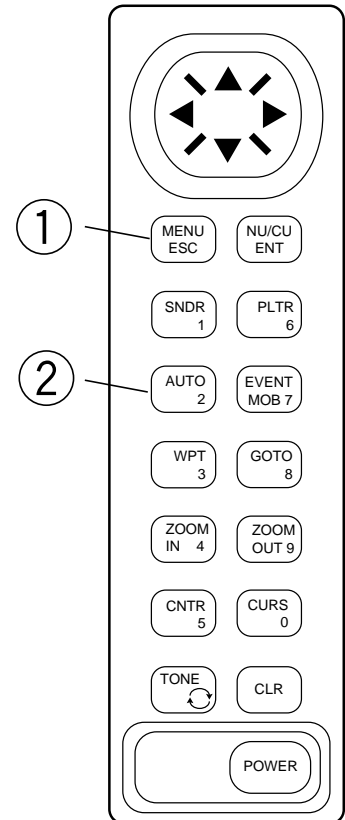


① Press the MENU key.

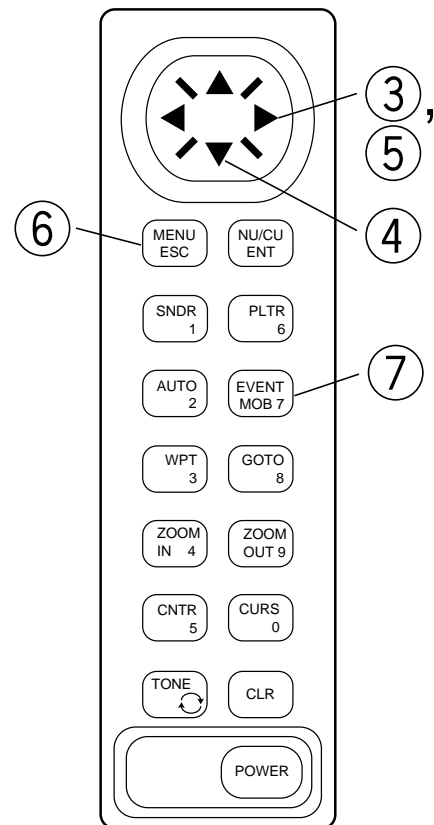
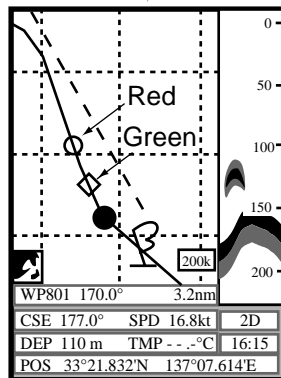
MAIN MENU	
1. DISPLAY SETUP	
2. TRACK/MARK SETUP	
3. ERASE TRACK/MARK	
4. ROUTE/ROUTE LIST	
5. ALARM SETUP	
6. VIDEO SOUNDER SETUP	
7. MEMORY SAVE/LOAD	
8. CLEAR MEMORY	
0. SYSTEM MENU	
▲▼: Cursor	
ESC: Esc	

② Press the [2] key.

TRACK/MARK SETUP	
MARK SHAPE	<input checked="" type="radio"/> <input type="radio"/> <input type="radio"/> <input type="radio"/> <input type="radio"/> <input type="radio"/>
	<input type="radio"/> <input type="radio"/> <input type="radio"/> <input type="radio"/> <input type="radio"/> <input type="radio"/>
LINE TYPE	<input type="checkbox"/> <input type="checkbox"/>
MARK COLOR	<input checked="" type="radio"/> RED <input type="radio"/> YEL <input type="radio"/> GRN <input type="radio"/> LBLU <input type="radio"/> PPL <input type="radio"/> BLU <input type="radio"/> WHT
TRACK COLOR	<input checked="" type="radio"/> RED <input type="radio"/> YEL <input type="radio"/> GRN <input type="radio"/> LBLU <input type="radio"/> PPL <input type="radio"/> BLU <input type="radio"/> WHT
MARK SIZE	<input checked="" type="radio"/> L <input type="radio"/> S
PLOT	<input checked="" type="radio"/> ON <input type="radio"/> OFF
PLOT INTVL	<input checked="" type="radio"/> TIME <input type="radio"/> DIST <input type="radio"/> AUTO
	00'10 00.10nm
▲▼◀▶: Cursor	
ESC: Esc	



- ↓
- ③ Press **▶** twice to select " " .
 - ↓
 - ④ Press **▼** twice to select MARK COLOR.
 - ↓
 - ⑤ Press **▶** twice to select GREEN.
 - ↓
 - ⑥ Press the ESC key.
 - ↓
 - ⑦ Press the EVENT key.



Returning to Harbor

Set your harbor as destination, and the course, range and bearing to it are displayed on the screen.

Set waypoint 01, which you entered earlier, as destination.

① Press the GOTO key.

SELECT GOTO MODE	
▲ WPT List	
EVENT List	
ROUTE List	
▼ Cursor/Route plan	
ENT: Sel	CLR: Release
	ESC: Cancel

② Press ▲ three times to select WPT List.

③ Press the ENT key.

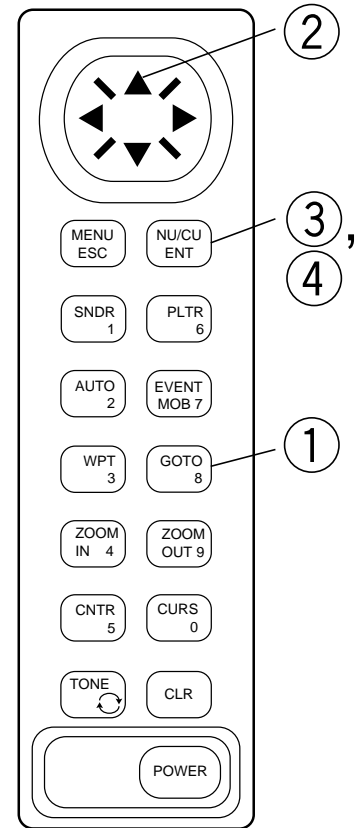
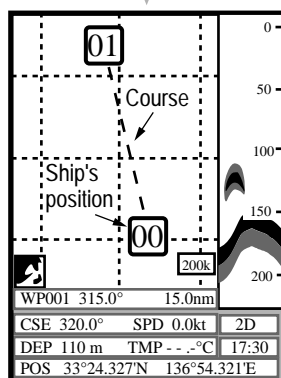
WAYPOINT LIST		
No.	LAT/LONG	COMMENT
001	34°26.345' N 135°41.243' E	970121 14
002		
003		

⋈⋈⋈

▲▼ : Cursor	↻ : Page
ENT: Edit	CLR: Delete WPT
	MENU: Sel Mode

④ Press the ENT key.

Current position is marked by "00." It is connected to destination 01 with a dashed line, which shows shortest course to destination. Range and bearing to the destination appear at the bottom of the screen.



**Cancel destination;
turn off
the equipment.**

⑤ After arriving, press the GOTO key.

SELECT GOTO MODE
▲ WPT List
EVENT List
ROUTE List
▼ **Cursor/Route plan**

ENT: Sel CLR: Release
ESC: Cancel

⑥ Press the CLR key.

RELEASE GOTO
ENT: YES
ESC: NO

⑦ Press the ENT key.

Destination is cancelled
and course line
disappears.

⑧ Press the ESC key.

⑨ Press the POWER key.

