

# **FURUNO USA**

## **GMDSS CONSOLE DEALERS MANUAL**

**These Instructions are intended for Furuno authorized  
Agents and Dealers ONLY!**

**These Instructions should not be released to the  
operator or owner of the equipment.**

**OSE-GMD-00Z**

# **GMDSS DEALERS MANUAL**

This manual contains procedures for changing system settings in the GMDSS console. This information is intended for Dealer use only and should not be left with the console.

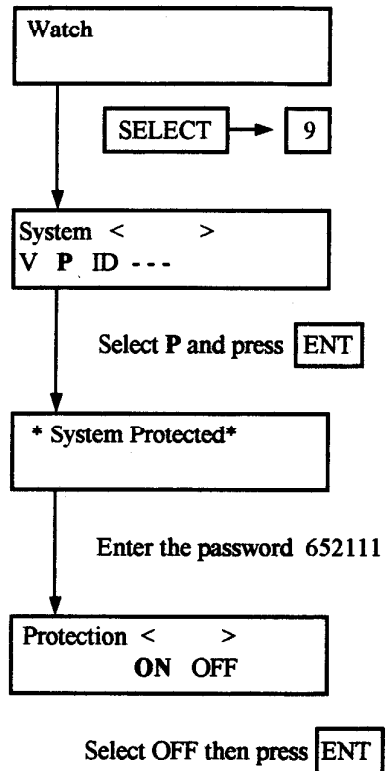
## **TABLE OF CONTENTS**

DSC-6, Changing System Settings .....	1
DSC-6, Changing MMSI Settings .....	2
DP-6, Answerback and ID Code .....	4
FM-8500, Changing System Settings .....	6
FM-8500, Rewriting the MMSI.....	7

## DSC-6

### Changing System Settings ( This will not allow changing the MMSI )

1. Turn on unit.
2. After start up, follow the procedure below:



3. Reset system settings as necessary.
4. Turn Protection back **ON** after changes are completed.

## **DSC-6**

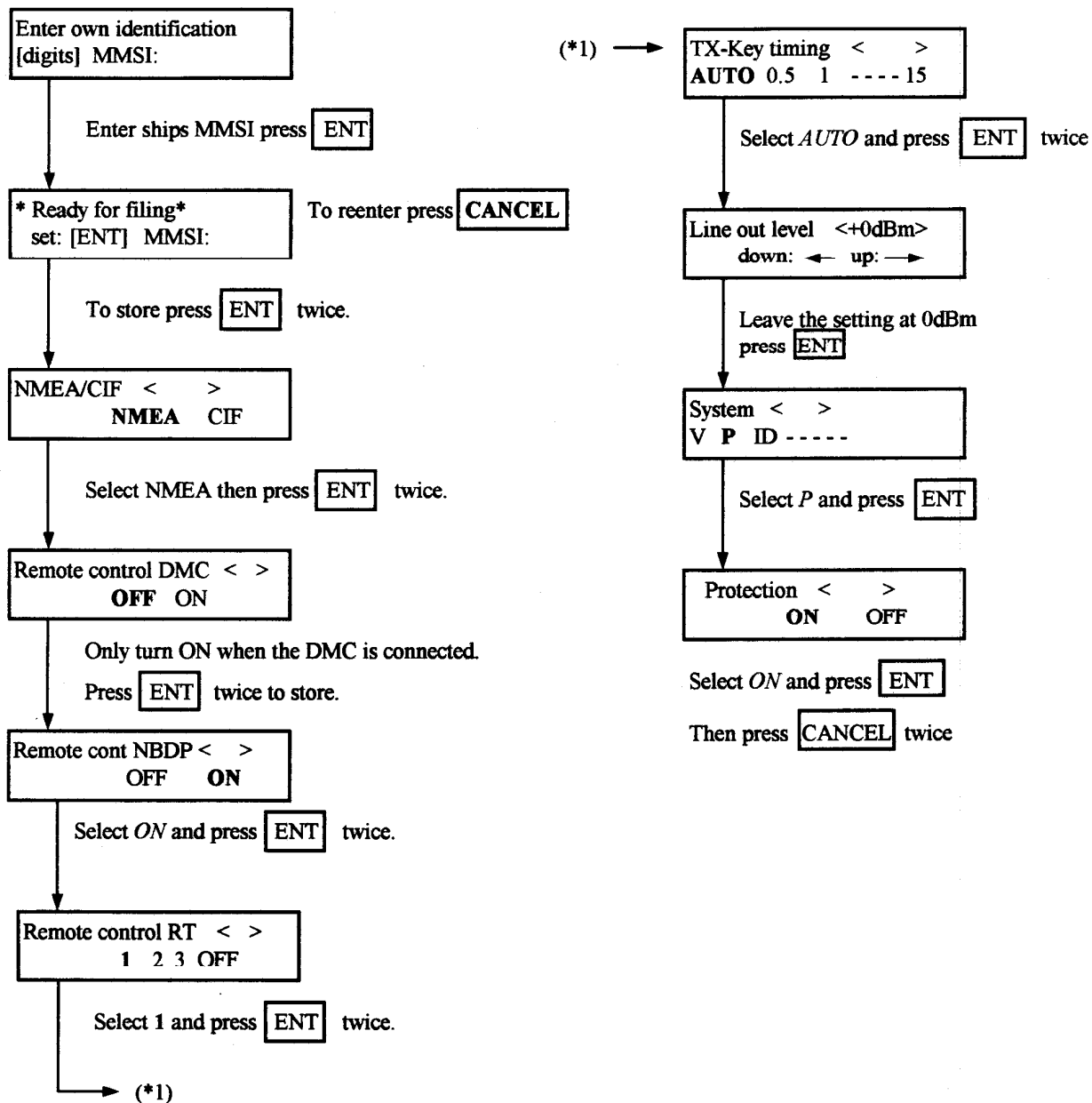
### **Changing the MMSI**

- 1) Disconnect the power and the printer cable from the right printer on the GMDSS console. Remove the printer brackets and the printer from GMDSS Console.
- 2) Disconnect the cables from the rear of the DSC-6. Making note of their locations.
- 3) Remove the 4 screws holding the DSC-6 bracket in the console.
- 4) Remove the side screws and washers holding the bracket in place.
- 5) Remove the 6 screws in the back of the DSC-6 and remove the cover.
- 6) Connect power to the DSC-6.
- 7) Turn on the unit and wait for the **TEST** or **WATCH** screen to appear.
- 8) Press the NMI switch located on the front of the Control PCB (05P0407).
- 9) The unit will now turn off.
- 10) Power on the DSC-6. The screen will show **Clear**.
- 11) Use the right arrow key to select **EEROM**. Then press **ENT**.
- 12) The power will turn off. Turn the unit back on and follow the procedure on page 3 of this manual. When the procedure is completed continue at step 13.
- 13) Disconnect the power and install the cover with its 6 screws.
- 14) Install the side screws, washers and bracket. Then install the DSC-6 in the console using the 4 screws provided.
- 15) Reconnect all cables to the DSC-6.
- 16) Reinstall the printer and connect all appropriate cables.
- 17) Test the DSC-6 using the procedure from the installation manual.

## DSC-6

### MMSI and System Settings

1. Turn on unit.
2. After start up, follow setup procedure below. Verify all information, once the protection is activated it cannot be easily changed.



## **DP-6** (Refer to Service Manual)

### **Changing Answerback and ID Codes**

1. Press [F5] to display the Station menu.

Station	
1:	Station Entry
2:	Timer Operation Entry
3:	Scan Entry
4:	User Channel Entry
5:	Answerback Code Entry
6:	Group ID Entry (4/5 digit)
7:	Group ID Entry (9 digit)
8:	Select ID Entry (4/5 digit)
9:	Select ID Entry (9 digit)

2. Press numeric key, or highlight the number for the ID or Answerback code to be changed.
3. Press [Enter] key.
4. The display should look like one of the examples:

Answerback Code Entry
Answerback Code
123456789 X (example)

**Answerback Code Entry Screen**

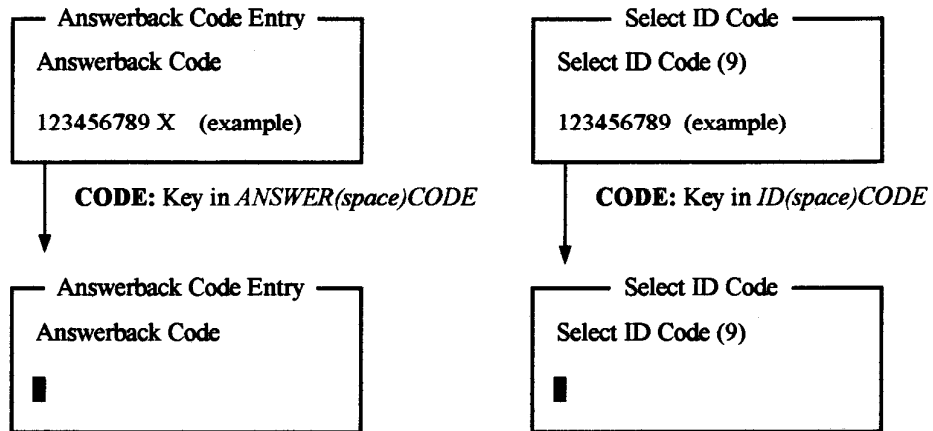
Select ID Code
Select ID Code (9)
123456789 (example)

**ID Code Entry Screen**

5. Press the [Caps Lock] key. Make sure caps lock is on.
6. Enter the unlocking code as shown in Figure 1.

## **DP-6** (Continued)

### **Changing Answerback and ID Codes**



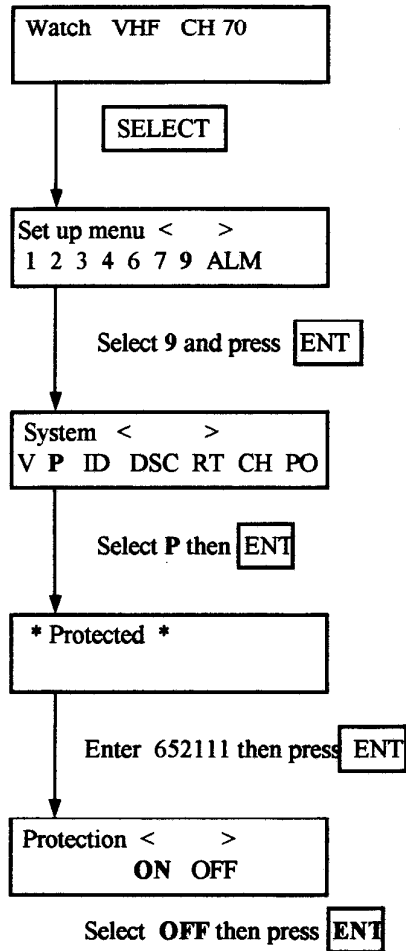
**Figure 1**

7. Enter new answerback or ID code.
8. Press [Enter] key. Verify information.
9. Press [Enter] key to end.

## **FM-8500**

### **Changing System Settings**

1. Turn on unit.
2. After start up, follow the procedure below:



3. Reset system settings as necessary.
4. Turn Protection back **ON** after changes are completed.



## FM-8500 REWRITING the MMSI

### THIS PROCEDURE WILL REVERT ALL SETTINGS TO FACTORY DEFAULTS !

1. Turn on the power and press the NMI switch located on the CONT PCB which is accessed by opening the bottom plate.
2. Turn off the power, then back on again. The next screen appears.

Clear < >

NO RAM EEROM ALL

3. Select *EEROM* and press *ENT*. After about 15 seconds, "*Turn off the power*" appears on the screen.
4. Turn the power off, then back on. The next screen appears.

TEST VHF CH70

MANUAL

5. Press *SELECT* and 9, then the next screen appears.

V P ID DSC RT CH PO

6. Select *ID* and press *ENT*.

Enter your MMSI

MMSI =

7. Input your MMSI number ( 9 digits ) and after ensuring that the number is correct, press *ENT*. The next screen appears.

## FM-8500 REWRITING the MMSI (Continued)

V P ID DSC RT CH PO

8. Select *P* and press *ENT*.

Protection < >

ON OFF

9. Select *ON* and press *ENT*. If *ENT* is pressed once again, the MMSI entered is confirmed.  
Press *CANCEL* several times until the next display appears. This completes the procedure.

WATCH VHF CH70

AUTO