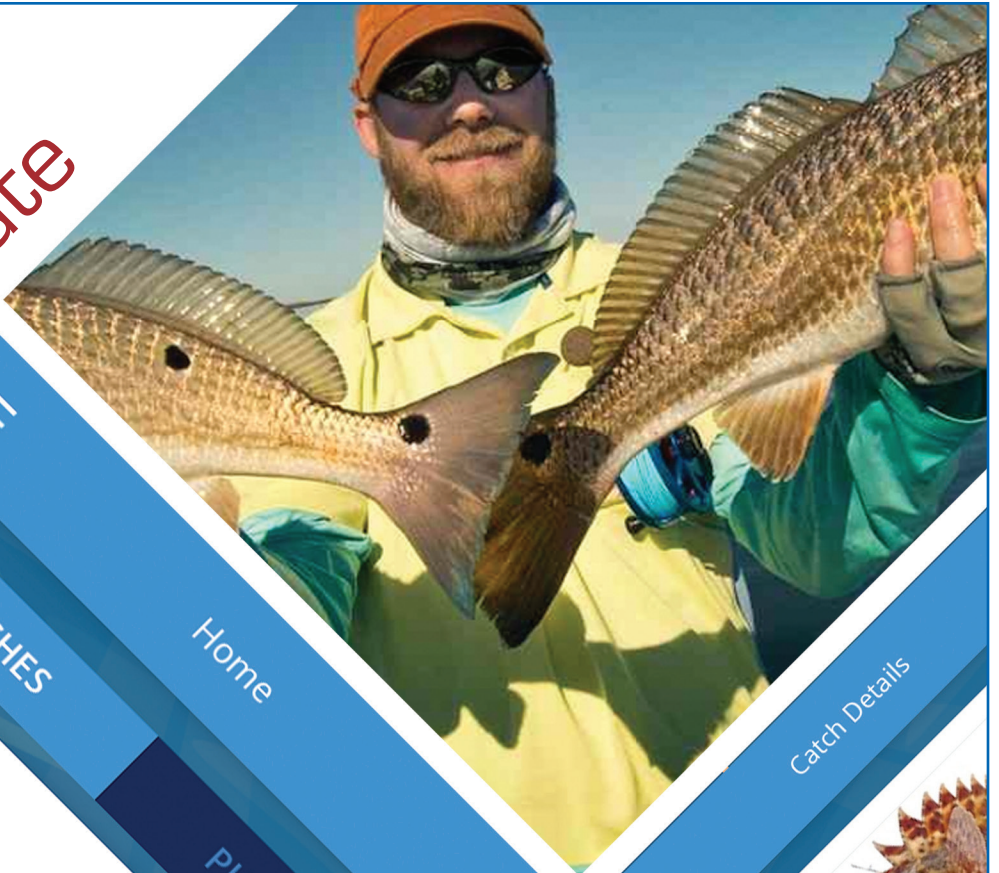




TN First Mate



CATCHES

Home

PHOTOS

Catch Details

Barracuda

24 December - 3:35 PM
15 Inches

Amberjack

23 December - 7:21 PM
12 Inches



ld Photo

16'



Dolphin Fish

24.0 lb

FURUNO

Log Catch



Snapper

16 in

9.5 lb

OK

CANCEL

FURUNO

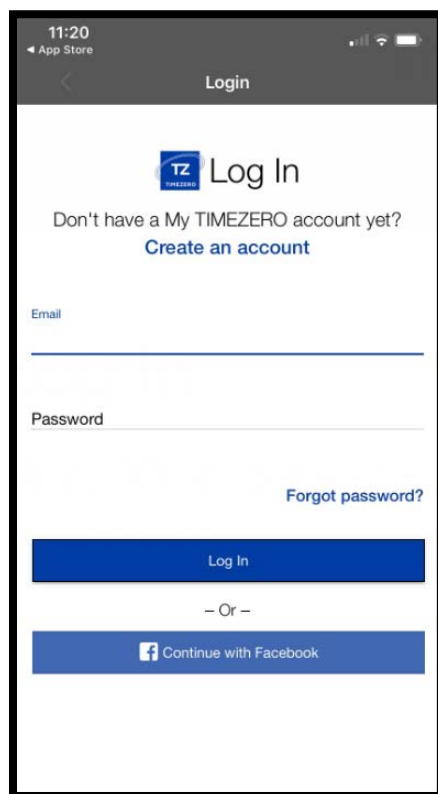
Furuno TZ First Mate

Introduction: NavNet TZtouch3 (v1) and TZtouch2 (v7) introduces two new types of user objects: "Catches" and "Photos". The Furuno TZ First Mate mobile App allows you to quickly create these objects using the phone you already have in your pocket while boating or fishing. These objects are then automatically synchronized with the MFD(s) when your phone is connected to the MFD's Wireless Hotspot. As soon as your phone has access to the internet the TZ First Mate App will synchronize and backup all contents of the user objects database (Catches, Photos, Marks, Routes and Boundaries). Lastly, TZ First Mate can be used to get MFD details such as System ID, Software Versions, and report issues via a Report Log.

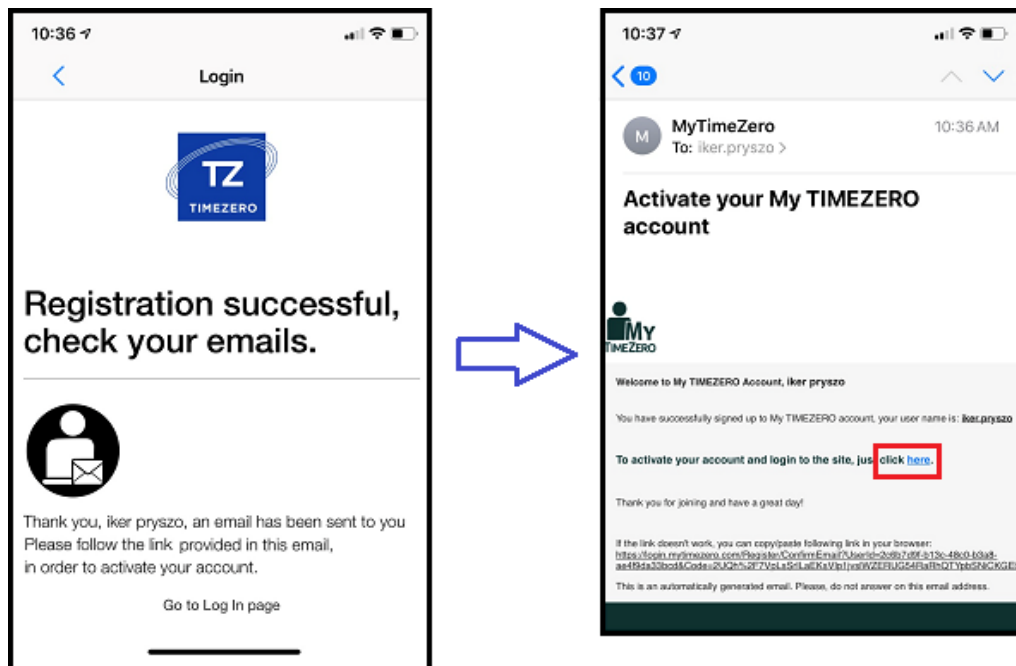
Best of all, Furuno TZ First Mate App is free and available for iOS and Android phones.

Log into your (My TIMEZERO Account)

When opening the App for the first time on your phone, it will prompt you to login to your My TIMEZERO account. If you do not have an account, you can create one directly from your phone using an email or a Facebook account:



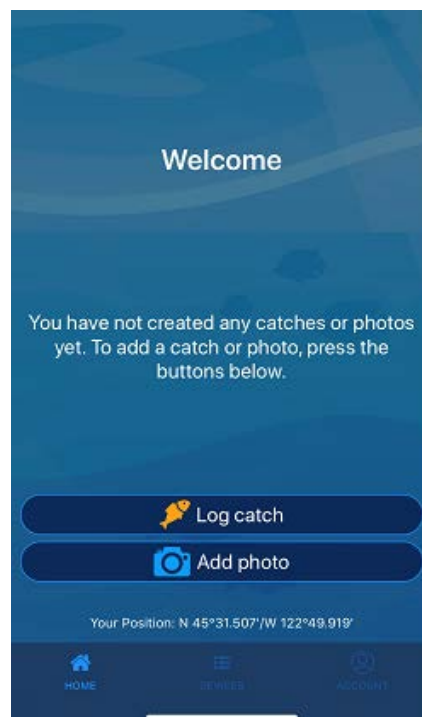
Note: If you decide to create an account using an email address, your email will need to be verified before using the App (by clicking on a link that will be included in the activation email):



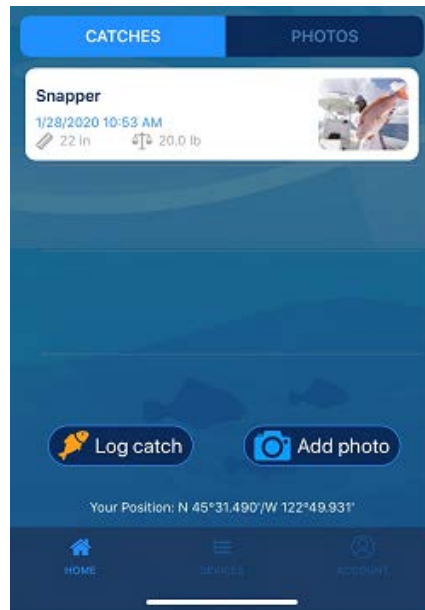
Once logged in, TZ First Mate will be able to exchange information with the TZ Cloud (via Internet) and to the MFD (via Wi-Fi).

HOME Screen

The HOME screen is the main screen of the App where you can quickly create a Catch or Photo and review/edit the ones that have already been created or synchronized. If your database does not contain any Catches or Photos yet, a welcome screen will be displayed:

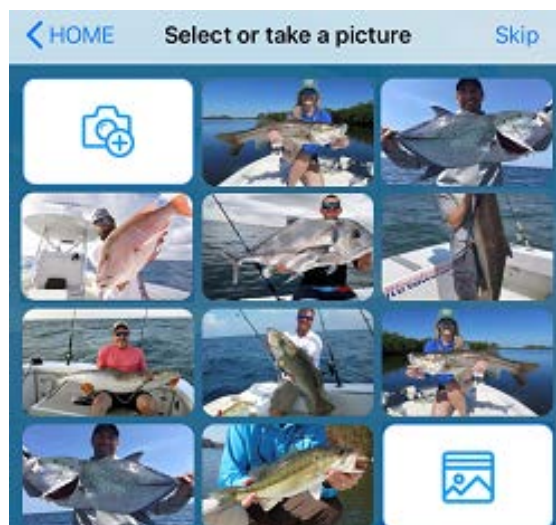


As soon as you create your first Catch or Photo, it will be displayed on the list. A tab at the top allows you to switch between "Catches" and "Photos":

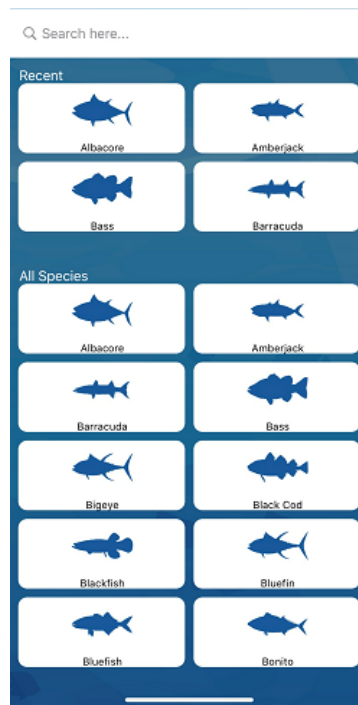


Note that in order to create a Catch or Photo, TZ First Mate App needs to know the phone's location (permission to access the phone location will be prompted when starting the App for the first time). However, if the phone is connected to an MFD (via Wi-Fi), TZ First Mate will use the GPS of the MFD as location source instead of relying on the phone's internal GPS.

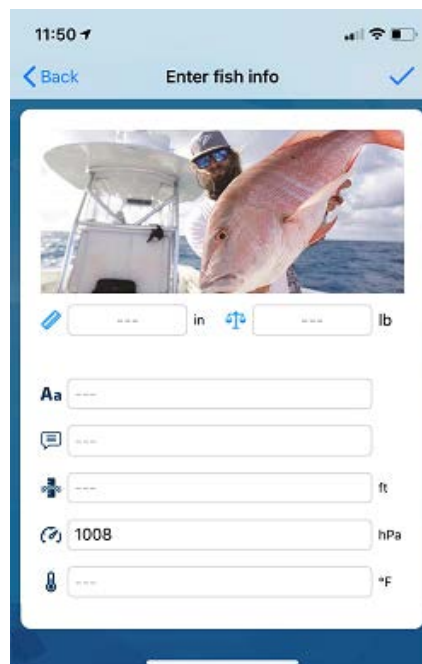
When creating a Catch or a Photo, the first step is to take or select a picture. TZ First Mate allows you to take a new picture (Camera Icon), or quickly pick an existing picture among the last 10-20 pictures available in your phone's library, or by browsing your entire photo library (Picture Icon). Taking a picture is optional for Catch (you can select "Skip" this step), but it is mandatory when creating a "Photo":



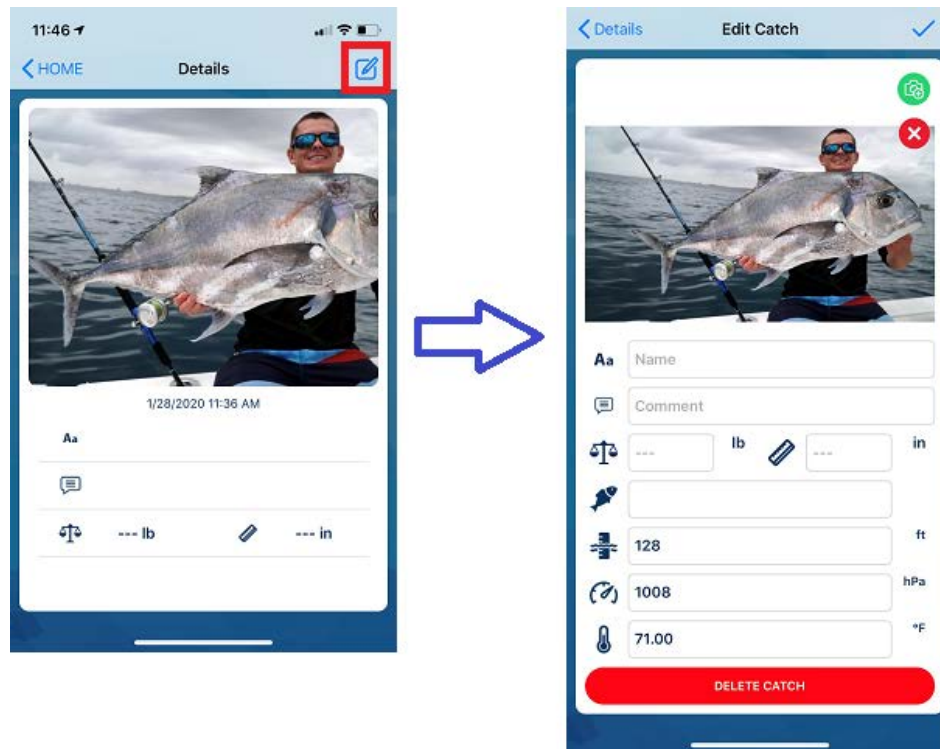
When you create a Catch, the next screen allows you to choose a fish species. At the top of the screen, TZ First Mate will display recent picks. But you can also scroll or search among the list of species available. Picking a species is mandatory for any Catch:



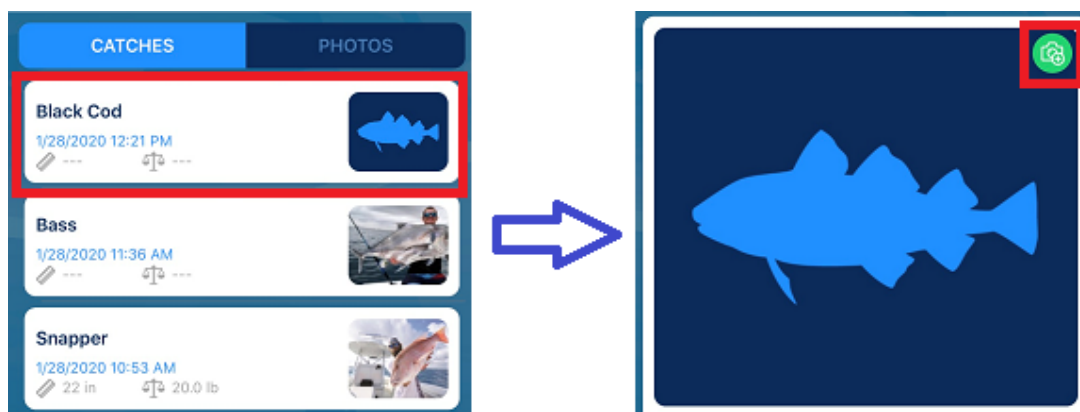
The next and final screen allows you to optionally enter various details about the Catch (fish length, fish weight, ...) as well as a general-purpose name and comment field. When connected to an MFD, some parameters (Depth, Sea Surface Temperature and Pressure) will automatically be logged if they are available on the MFD:



It is not necessary to enter all information at the time you create the Catch. You can always add information to an existing Catch from the HOME screen later. Just tap on the "Catch" from the list to display its details and press the "Edit" button to add or edit any information:



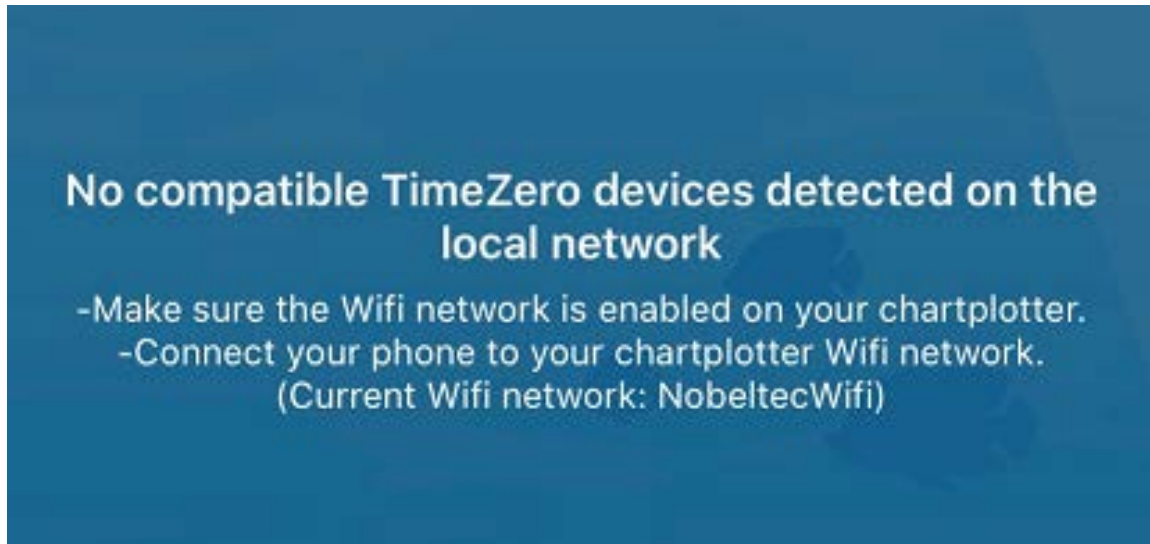
You can even add or replace a picture to an existing Catch. This is particularly useful, if you have created a Catch directly from your MFD (which can be more convenient thanks to the "Event" button which is always in reach). Without, any picture a Catch will be displayed with its fish species in the list. Tap on it, click on the "Edit" button and then tap the camera icon to take or select a picture:



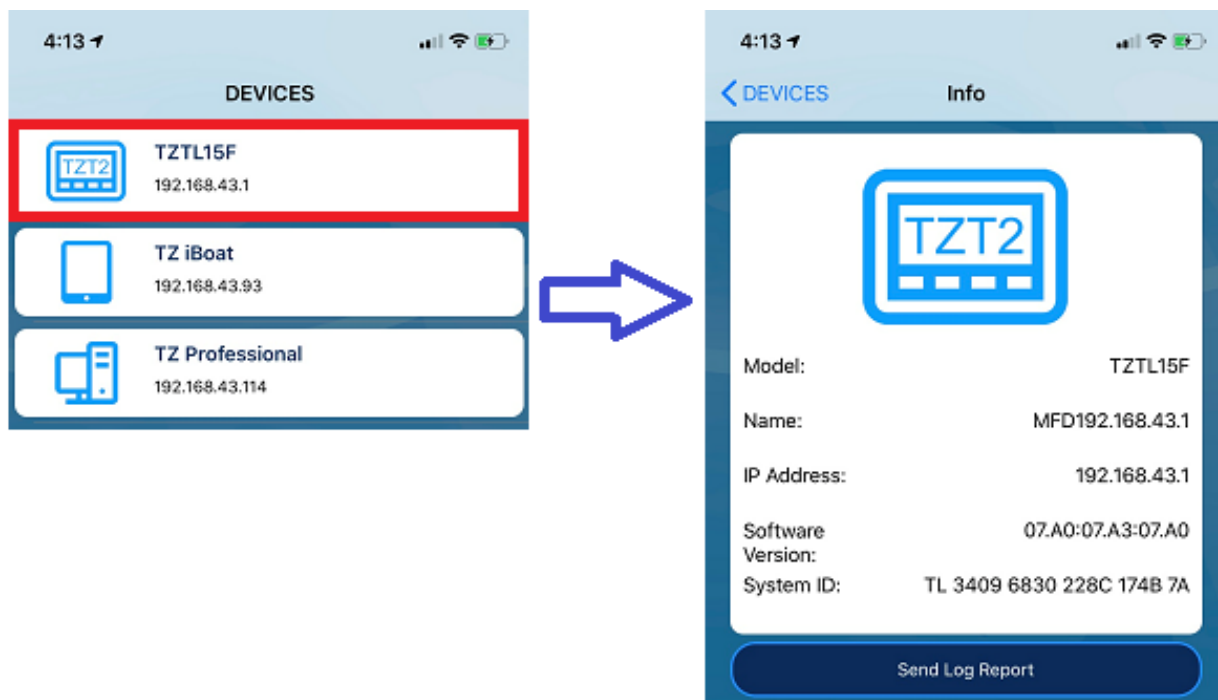
Once added from TZ First Mate, the picture will be synchronized back to the MFD automatically!

DEVICES Screen

The DEVICES screen lists compatible TimeZero platforms that have been detected on the local network (Wi-Fi). If no other devices are detected, brief instructions will be displayed explaining how to connect the phone to the MFD Wi-Fi network:



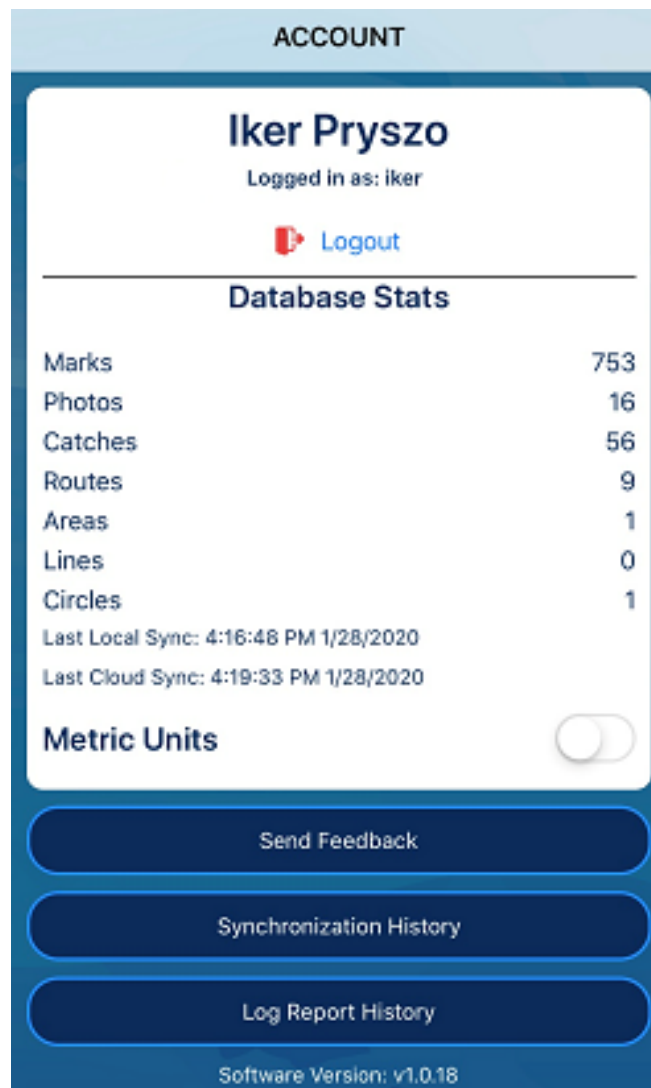
When other TimeZero platforms are detected on the network, the list view displays the device's type and IP address. If you tap on "Devices", a page with device information will be displayed. For an MFD, you can even send a report log by clicking on the "Send Log" button:



Report will be queued for upload until an Internet connection is available.

ACCOUNT Screen

The ACCOUNT screen displays information about the My TIMEZERO account currently used and the user's database. It also displays the time at which the last local synchronization occurred (when TZ First Mate synchronized the User Object database with another device on the same Wi-Fi network) and the last cloud synchronization (when TZ First Mate synchronized and backed up the User Object database with the TZ Cloud via Internet):



At the bottom of this screen, you will have an option to send feedback about the TZ First Mate App (for example, requesting a new fish species to be added) by clicking on "Send Feedback". Pressing the "Synchronization History" button will show a detailed log of the local and cloud synchronization. Finally, the "Log Report History" will list all the log and feedback (feedback of the App and log of the MFD) that has been sent by the user (and make sure they all have been uploaded).

FAQ

Do I need Internet connection to use TZ First Mate?

An Internet connection is only necessary the very first time you open the App to log in to the My TIMEZERO account. Once logged in, TZ First Mate can be used off-line. It will simply store any Catches or Photos created in the phone's local storage until an Internet connection is available again.

Do I need an MFD to use TZ First Mate?

No, TZ First Mate can be used as a standalone App. You can view all the Catches and Photos you've created using a web-browser at "cloud.mytimezero.com".

What is the maximum amount of Catches and Photos I can take with TZ First Mate?

Just like with the MFD, you can take a maximum of 1000 Catches and 1000 Photos.

My Fish Species is not available as a selection. What can I do?

All Fish Species are not available in TZ First Mate. We have made the choice to restrict the list to the most popular species. However, if your desired fish species is not yet available on TZ First Mate, you can still use it. Just select the species "Other" and use the name field of the Catch to include your custom Fish Species. Then, send us a feedback through the App to let us know which fish species you would like to be added. We cannot guarantee that we will add all fish species requested, but we have plans to add the most common requests.

Can I display my Catch and Photos on a Map or Chart inside TZ First Mate?

No, the concept of the TZ First Mate App is to be simple and focused on taking a Catch or Photo faster. However, if you want an App that can display all of your user objects on a chart, we can recommend Nobeltec TZ iBoat which is compatible with the TZ Cloud (My TIMEZERO account). TZ iBoat can also fully synchronize with your MFD and can take Catch and Photos like TZ First Mate with the added features of a basic Chart plotter. For more information about TZ iBoat, please have a look below:

<https://mytimezero.com/tz-iboat>

Will TZ First Mate ever include other features?

We have lots of ideas, but we would like to hear yours first. Please use the "Send Feedback" option available in the App to tell us what you would like First Mate to do!