

FELCOM 11 OPERATOR'S GUIDE

The purpose of this convenient sized operator's guide is to serve as an operating guide for the FURUNO FELCOM 11 INMARSAT C Mobile Earth Station.

▼△▼△▼ CONTENTS ▼△▼△▼

SYSTEM REGISTRATION/SETTINGS

1. System settings	2
2. EGC settings	3
3. Programming the station list	4
4. Login	5

MESSAGE HANDLING

1. Preparing a message	6
2. Saving a message	7

COMMUNICATION

1. Transmitting prepared message	8
2. Transmitting stored message	10
3. Displaying and printing receive messages	13
4. Displaying and printing EGC messages	14

SHORTCUT KEY OPERATION

LES ID List & International Telephone/Telex Country Code	16
--	----

SYSTEM REGISTRATION/SETTINGS

1 System settings

(Refer to page 2-3 of the Operator's Manual for details.)

1. Press **[F5]** to display the SYSTEM menu.
2. Press **[1]** or **[Enter]** to display the SYSTEM SETUP screen.

File	Edit	Send/Rec	Command	System	Term	Editor	Disp	Test	Distress

System Setup									
1:	System Date (UTC)	91-06-13 (YY-MM-DD)							
2:	-----								
3:	Preferred NCS	Auto/ AOR(WEST)/ AOR(EAST)/ POR/ IOR							
4:	-----								
5:	MES Operation Mode	INMARSAT-C/ EGC							
6:	Nav Port	INT/EXT/OFF							
7:	DTE2 Port Sub-addr.	001							
	Message Output Port	DTE1/ DTE2/ Auto (Depend on SubAddr)							
	EGC Output Port	DTE1/ DTE2/ DTE1 + DTE2 Port							
	Polling Output Port	DTE1/ DTE2/ Auto (Depend on SubAddr)							

3. Enter YEAR, press **[→]**, enter MONTH, press **[→]** and enter DATE.
4. Press **[↓]** to advance the cursor to the Preferred NCS line.
5. Press **[→]** or **[←]** to select appropriate NCS.
6. Press **[↓]** to advance the cursor to the MES Operation Mode line.
7. Press **[→]** or **[←]** to select operating mode; INMARSAT-C or EGC.
8. Press **[↓]**.
9. Press **[→]** or **[←]** to select navigation device.
10. Press **[↓]**.
11. SUB ADDRESS of the DTE2 port can be entered, but for now, set to 1.
12. Press **[↓]**.
13. Press **[→]** or **[←]** to select the DTE which you want to send receive messages.
14. Press **[↓]**.
15. Press **[→]** or **[←]** to select the DTE which you want to send EGC messages.
16. Press **[↓]**.
17. Press **[→]** or **[←]** to select the DTE which you want to send polling signal.
18. Press **[Enter]** to register the system settings.

2 EGC settings (Refer to page 2-11 of the Operator's Manual for details.)

1. Press **[F5]** to display the **SYSTEM** menu.
2. Press **[2]** to display the **EGC SETUP** screen.

File	Edit	Send/Rec	Command	System	Term	Editor	Disp	Test	Distress

EGC Setup									
1:	Additional Position		↓-----:--:--						
2:	Navarea		-----						
3:	Fixed Area		-----						
4:	Waypoint (from NAV Equipment)		OFF / ON						
5:	-----								
6:	NAVTEX								
7:	Station Code		ABDEGHIKLNOPQRSUYWZ						
Type of Message (Cannot reject other report)									
	Ice reports	OFF/ON	OMEGA messages	OFF/ON					
	Meteo. forecasts	OFF/ON	SATNAV messages	OFF/ON					
	Pilot service	OFF/ON	Other navaid msg	OFF/ON					
	DECCA messages	OFF/ON	QRU(no message)	OFF/ON					
	LORAN messages	OFF/ON							

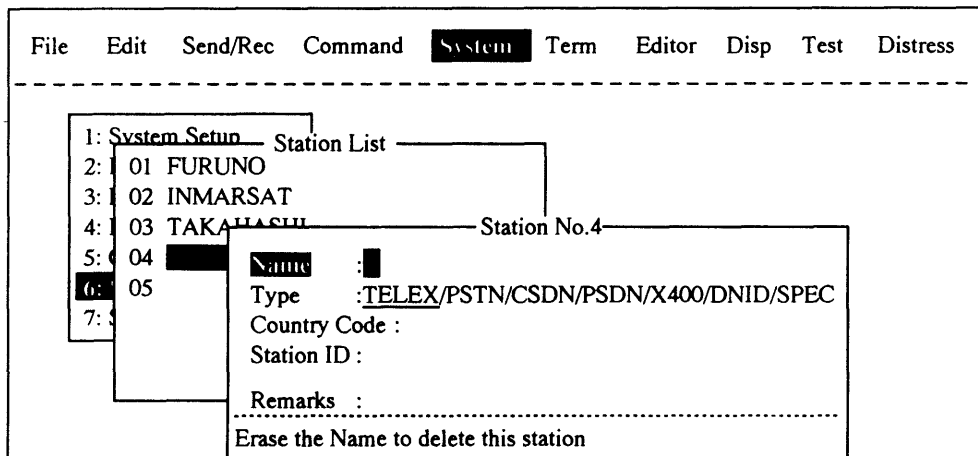
Current State: IDLE				SYNC(NCS)			91-08-10 12:00(UTC)		
				NCS:IOR LOGIN			LAT: 34:43.00N		
							LON:135:21.00E		

3. Enter the L/L position where you want to receive EGC broadcasts.
4. Press **[↓]** to go to the Navarea line.
5. Enter the Navarea(s) (up to nine) which you want to receive EGC broadcasts.
6. Press **[↓] [↓]** to advance the cursor to the Waypoint line.
7. Select ON to receive broadcasts which cover a waypoint selected on the navigation device.
8. Press **[↓]**.
9. Enter the navtex station code (A to Z) where your vessel is currently sailing.
10. Press **[↓]**.
11. Using the arrow keys select the navtex broadcasts you wish to receive.
12. Press **[Enter]** to register all EGC settings.

3 Programming the station list

(Refer to page 2-19 of the Operator's Manual for details.)

1. Press **[F5]** to display the SYSTEM menu.
2. Press **[6]** to display the STATION LIST.
3. Press **[↓]** several times to place the cursor on a blank line.
4. Press **[Enter]** to display the Station List Programming screen.

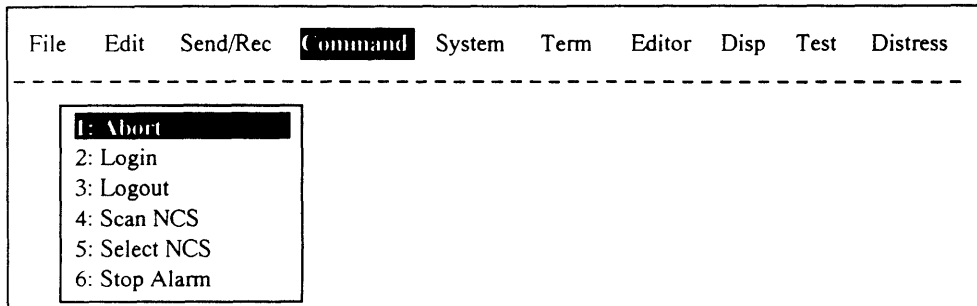


5. Enter name of station, using maximum 15 characters.
6. Press **[↓]** to advance the cursor to the Type line.
7. Select destination type with arrow keys.
(When "PSTN" is selected, Modem type line appears below the Station ID line. Advance the cursor to the station ID line, then tap the **[space]** bar to display the modem type list. Select modem type "T30 FAX" and then press **[Enter]**.)
8. Press **[↓]** to advance the cursor to the Country Code line.
9. Enter International Telex Country Code or Ocean Region Code.
(When "PSTN" is selected, enter Telephone Country Code.)
10. Press **[↓]**.
11. Enter telex subscriber number (for land) or station ID (for vessel).
(When "PSTN" is selected, enter facsimile number.)
12. If desired, press **[↓]** and enter remarks, using up to 20 characters.
13. Press **[Enter]** to complete station input.
14. To program another station, repeat steps 3 thru 11.
15. Press **[Esc]** twice to return to the default display.

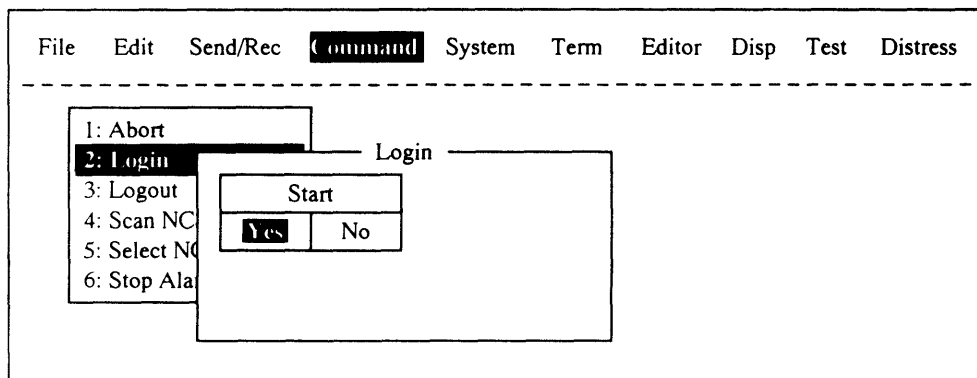
4

Login (Refer to page 2-6 of the Operator's Manual for details.)

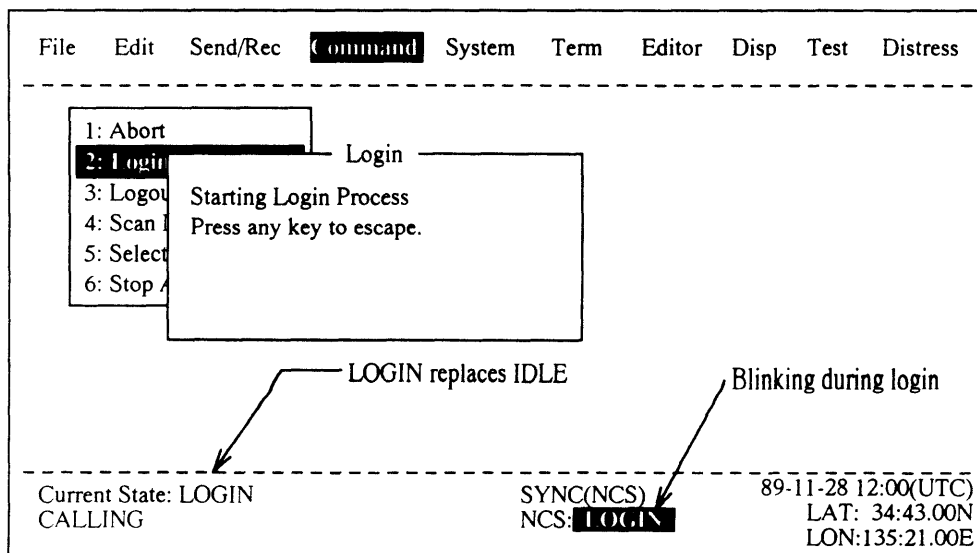
1. Press **[F4]** to display the COMMAND menu.



2. Press **[2]** to display the LOGIN screen.



3. Press **[Enter]** to start login.



4. When login is completed, "Successful Login" appears and "LOGIN" stops blinking.

* If you will not be using the FELCOM 11 for a prolonged period of time, you should logout from the INMARSAT-C system, before turning off the power to the communication unit.

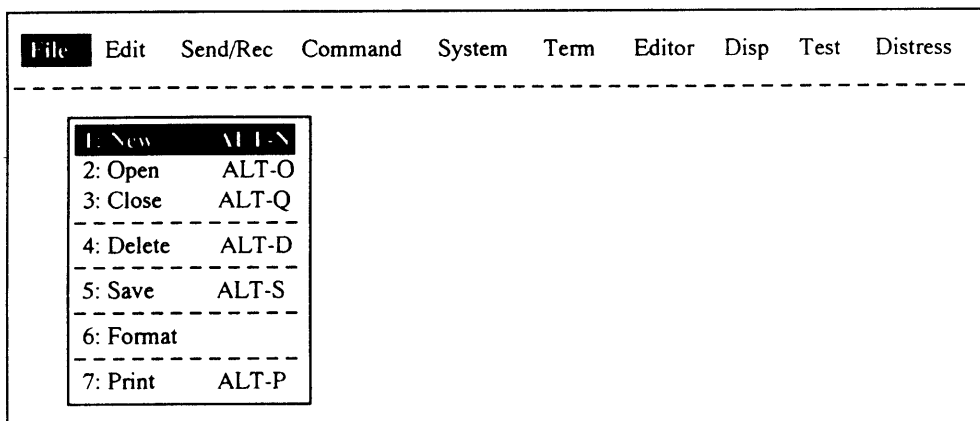
MESSAGE HANDLING

1

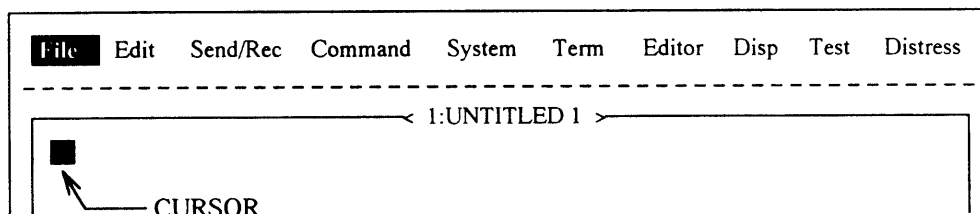
Preparing a message

(Refer to page 3-2 of the Operator's Manual for details.)

1. Press **[F1]** to display the FILE menu.

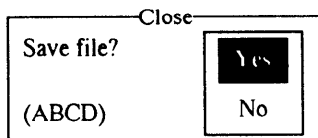


2. Press **[1]** or **[Enter]** to display the text editor screen.



3. Type your message just as would do with an ordinary wordprocessor.

NOTE: If a screen something like the one below appears instead of the text editor screen do one of the following.



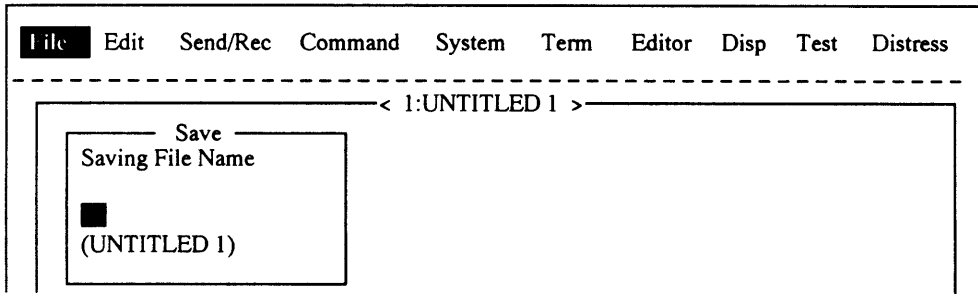
- To close the window without storing it to the memory, select NO by **[↓]** and press **[Enter]**. Then, the text editor screen appears.
- To close the window after storing it to memory, press **[Enter]** and type a file name if necessary and then **[Enter]**. The text editor screen appears.

2

Saving a message

(Refer to page 3-9 of the Operator’s Manual for details.)

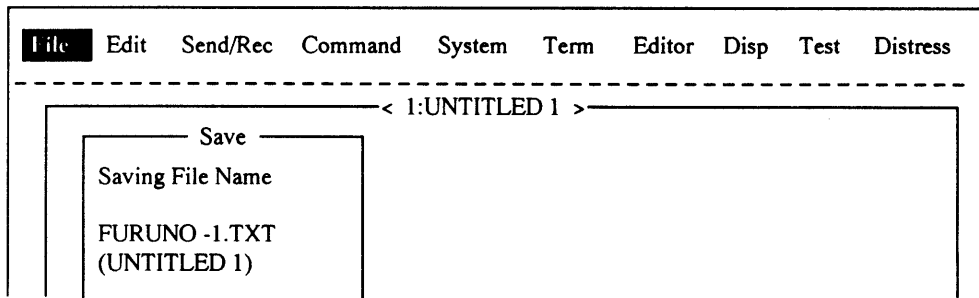
1. Insert a formatted floppy disk into the floppy disk drive.
2. Press **[F1]** to display the FILE menu.
3. Press **[5]** . The screen should look something like the figure below.



4. Enter a file name, maximum eight characters. A file name can also be entered with extension name (3 characters).

(ex.) FURUNO-1. TXT

↳ Extension Name



5. Press **[Enter]** . “SAVING” appears on the display and the access lamp on the disk drive lights.

NOTE: Never remove a floppy disk from the disk drive when the access lamp is on.

6. The access lamp goes off when saving is completed. The message remains on the screen.

- * To use the CLOSE command to save a message, refer to Page 3-11 of the Operator’s Manual.
- * To recall a file from a floppy disk, refer to page 3-13 of the Operator’s Manual.

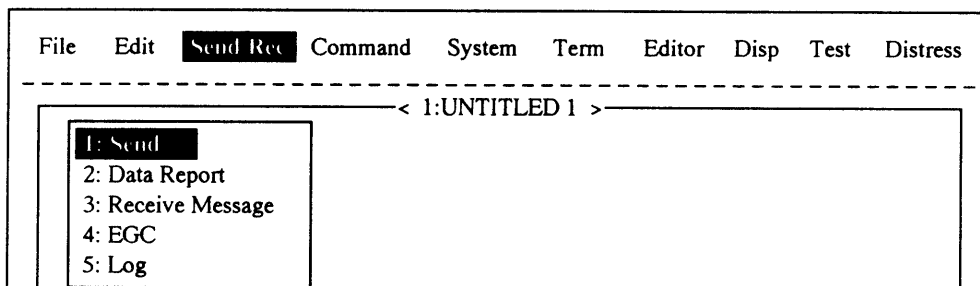
COMMUNICATION

1

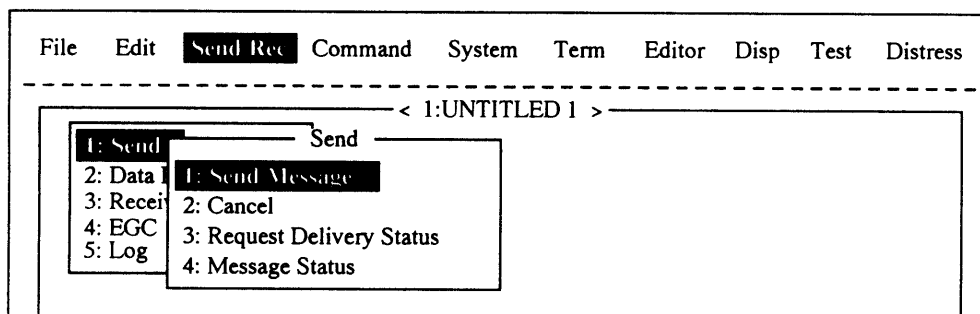
Transmitting prepared message

(The following shows the procedure when selecting "TELEX" on the Destination Type line. For other types, refer to chapter 4 of the Operator's Manual.)

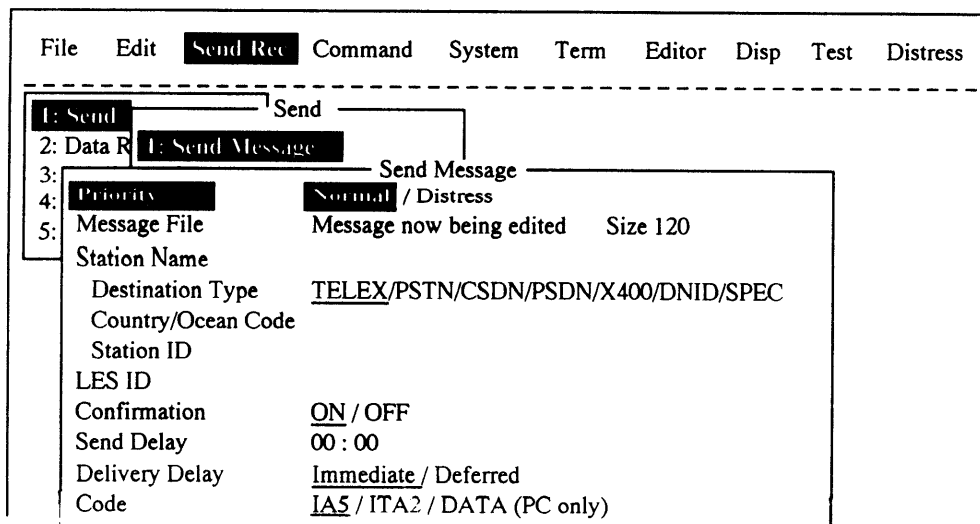
1. Prepare a message.
2. Press **[F3]** to display the SEND/REC menu.



3. Press **[1]** or **[Enter]** to display the SEND sub menu.

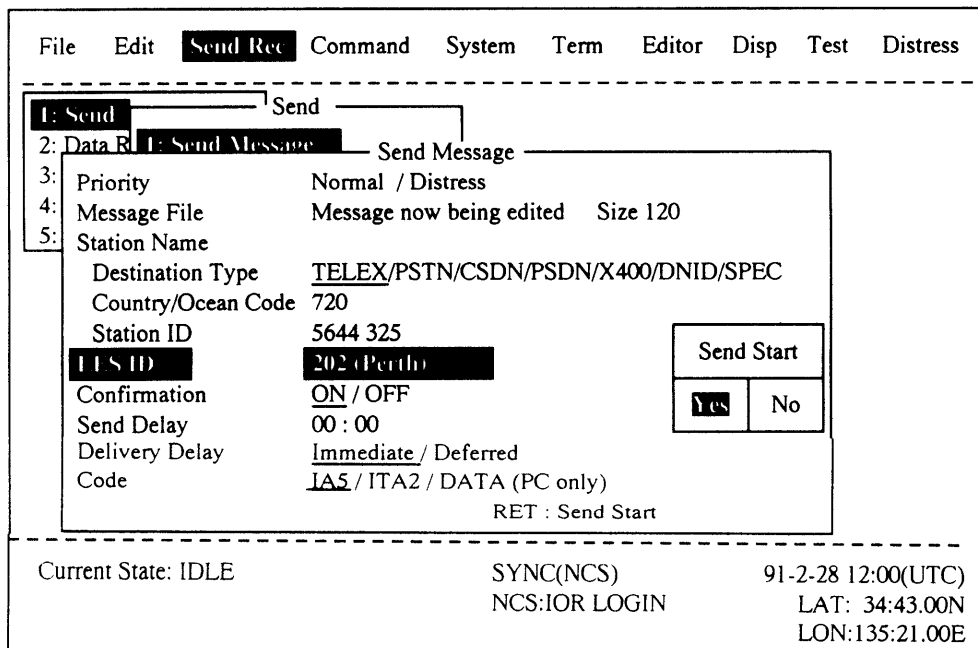


4. Press **[1]** or **[Enter]** to display the SEND MESSAGE screen.



5. Press **[↓]** to send the cursor to the Destination Type line. (The priority remains "Normal".)
6. Select TELEX on the Destination Type line by pressing arrow key.
7. Press **[↓]** to send the cursor to the Country/Ocean Code line.

8. Enter an International Telex Country Code or an Ocean Region Code.
(Note 1)
9. Press [↓] to advance the cursor to the Station ID line.
10. Enter telex subscriber number (for land) or station ID (for vessel).
11. Press [↓] to advance the cursor to the LES ID line.
12. Enter LES ID.
13. Press [↓].
14. If necessary, change the following three items.
 - Confirmation ON/OFF :To receive confirmation of delivery to recipient, select ON.
 - Send Delay 00:00 :Assign a delay time to one message when you are going to send two messages.
 - Delivery Delay Immediate/Deferred :To request the LES for immediate transmission, select Immediate.
15. Press [Enter] . The display should look something the figure below.

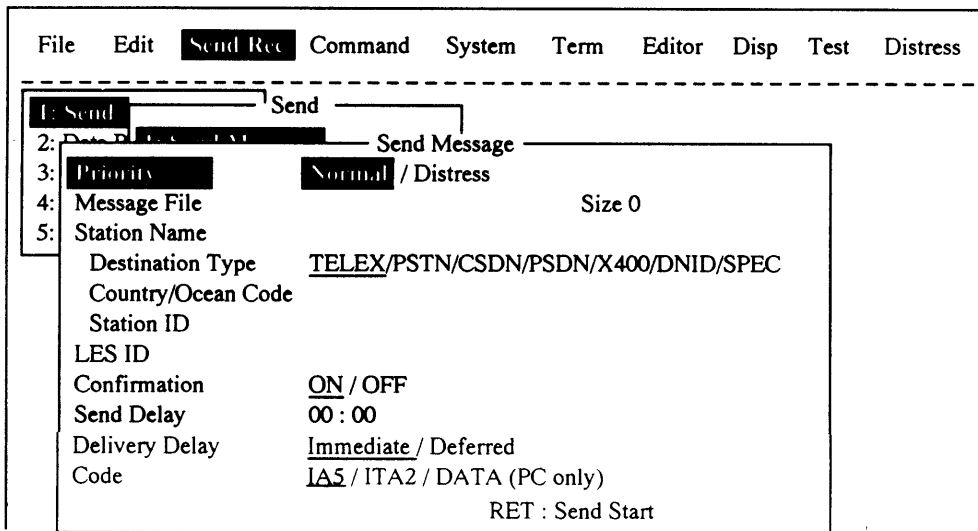


16. Press [Enter] to send the message to the message queue.
17. The message will be transmitted according to Send Delay setting.

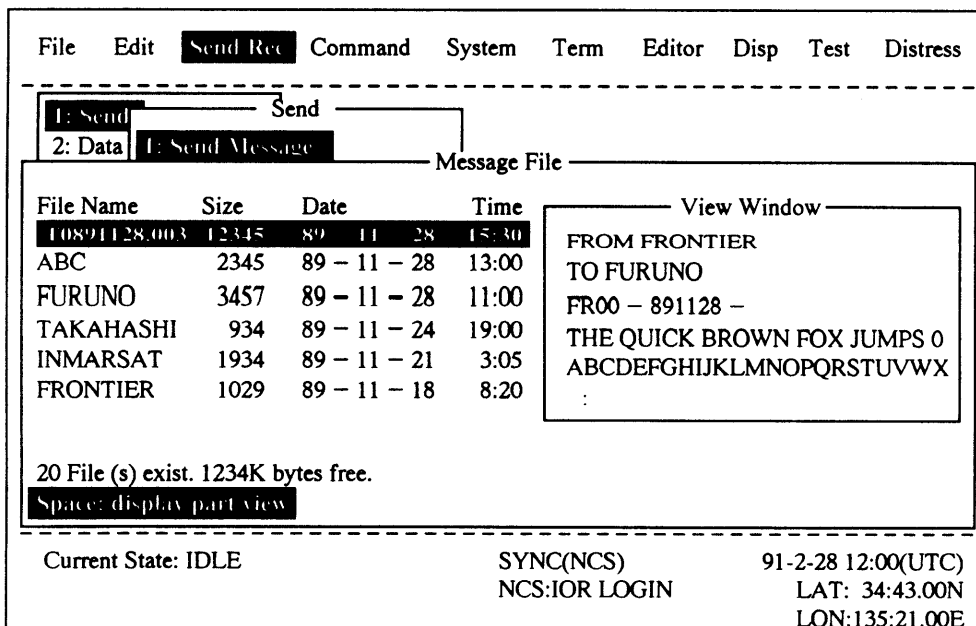
Note 1. Refer to page 16 in this Operator's Guide or pages A-3 thru A-9 in the Operator's Manual for the International Telex Country Codes and Ocean Region Codes.

2 Transmitting stored message

1. Close files in the working area (Refer to page 3-10 in Operator's Manual) to clear the screen. Insert floppy disk containing file you want to send.
2. Press **[F3]** to display the SEND/REC menu.
3. Press **[1]** or **[Enter]** to display the SEND menu.
4. Press **[1]** or **[Enter]** to display the SEND MESSAGE screen.

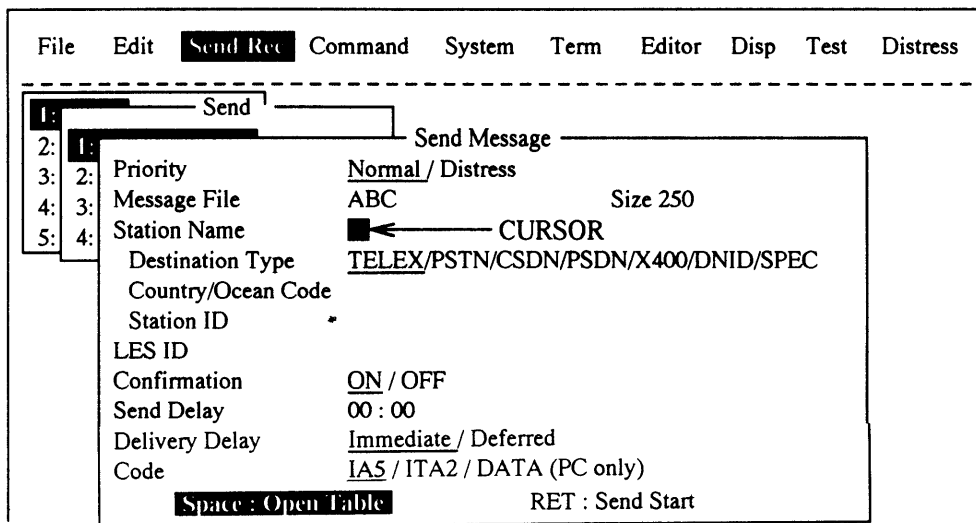


5. Press **[↓]** to advance the cursor to the Message File line. (Priority remains Normal.)
6. Tap the space bar to display MESSAGE FILE list. For PC use **[→]** key.

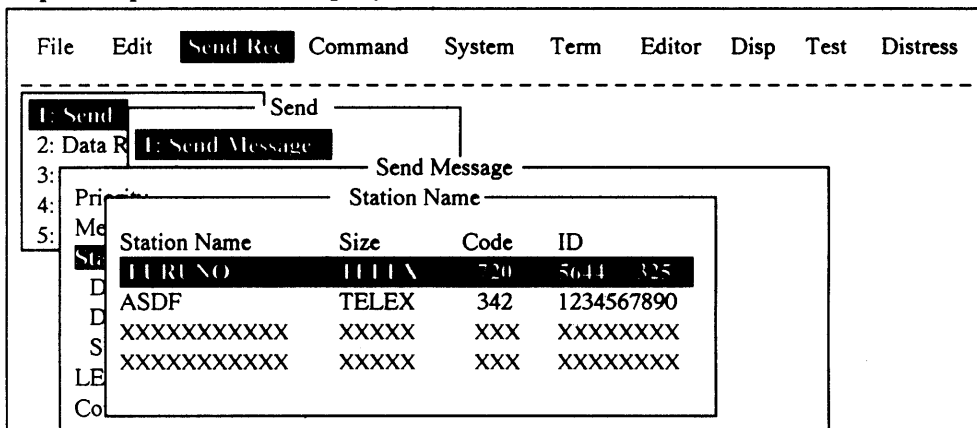


7. Press **[↓]** or **[↑]** to select the file you want to send. To get a partial display of the file selected, tap the space bar.

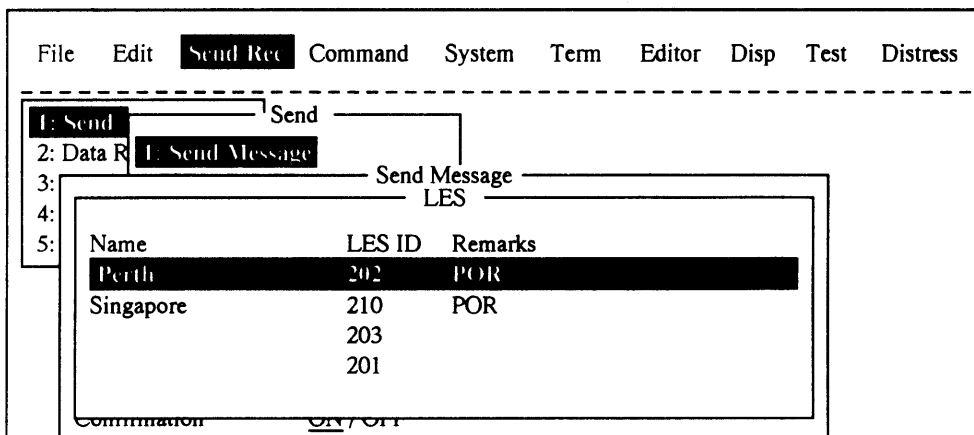
- Press **[Enter]** . The file name selected appears on the **SEND MESSAGE** screen. The cursor moves to the **Station Name** line.



- Tap the space bar to display the **STATION NAME** list. For PC use the **[→]** key.



- Press **[↓]** or **[↑]** to select the station you want to communicate with.
- Press **[Enter]** . The Station Name selected, Destination Code and Station ID appear on the **SEND MESSAGE** screen. The cursor moves to the **LES ID** line.
- Tap the space bar to display the **LES** List. For PC use the **[→]** key.



- Press **[↓]** or **[↑]** to select the LES you want to send the message to.

14. Press **[Enter]** . The LES selected appears on the LES ID line. The cursor moves to the Confirmation line.

File	Edit	Send Rec	Command	System	Term	Editor	Disp	Test	Distress

1: Send	Send								
2: Data R	1: Send Message								
3:	Send Message								
4:	Priority	<u>Normal</u> / Distress							
5:	Message File	ABC	Size 250						
	Station Name	FURUNO							
	Destination Type	<u>TELEX/PSTN/CSDN/PSDN/X400/DNID/SPEC</u>							
	Country/Ocean Code	720							
	Station ID	5644-325							
	LES ID	202 (Perth)							
	Confirmation	ON / OFF							
	Send Delay	00 : 00							
	Delivery Delay	<u>Immediate</u> / Deferred							
	Code	<u>IA5</u> / ITA2 / DATA (PC only)							

15. If necessary, change the following three items.

Confirmation ON/OFF :To receive confirmation of delivery to recipient, select ON.

Send Delay 00:00 :Assign a delay time to one message when you are going to send two messages.

Delivery Delay Immediate/Deferred :To request the LES for immediate transmission, select Immediate.

16. Press **[Enter]** . The display should look something like the figure below.

File	Edit	Send Rec	Command	System	Term	Editor	Disp	Test	Distress

1: Send	Send								
2: Data R	1: Send Message								
3:	Send Message								
4:	Priority	<u>Normal</u> / Distress							
5:	Message File	ABC	Size 250						
	Station Name	FURUNO							
	Destination Type	<u>TELEX/PSTN/CSDN/PSDN/X400/DNID/SPEC</u>							
	Country/Ocean Code	720							
	Station ID	5644-325							
	LES ID	202 (Perth)							
	Confirmation	ON / OFF							
	Send Delay	00 : 00							
	Delivery Delay	<u>Immediate</u> / Deferred							
	Code	<u>IA5</u> / ITA2 / DATA (PC only)							
						Send Start			
						Yes No			
						RET : Send Start			

Current State: IDLE				SYNC(NCS)			91-2-28 12:00(UTC)		
				NCS:IOR LOGIN			LAT: 34:43.00N		
							LON:135:21.00E		

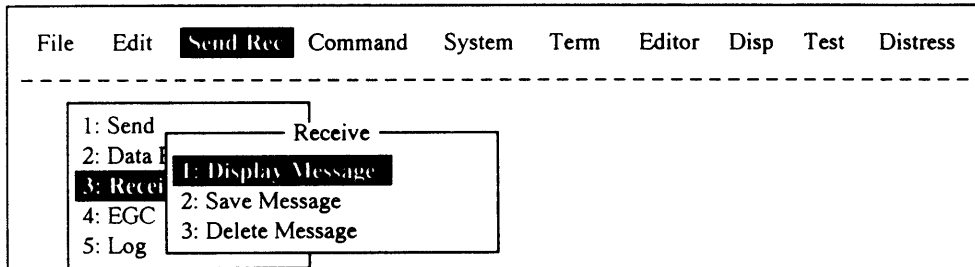
17. Press **[Enter]** to send the message to the message queue.

18. The message will be transmitted according to the Send Delay setting.

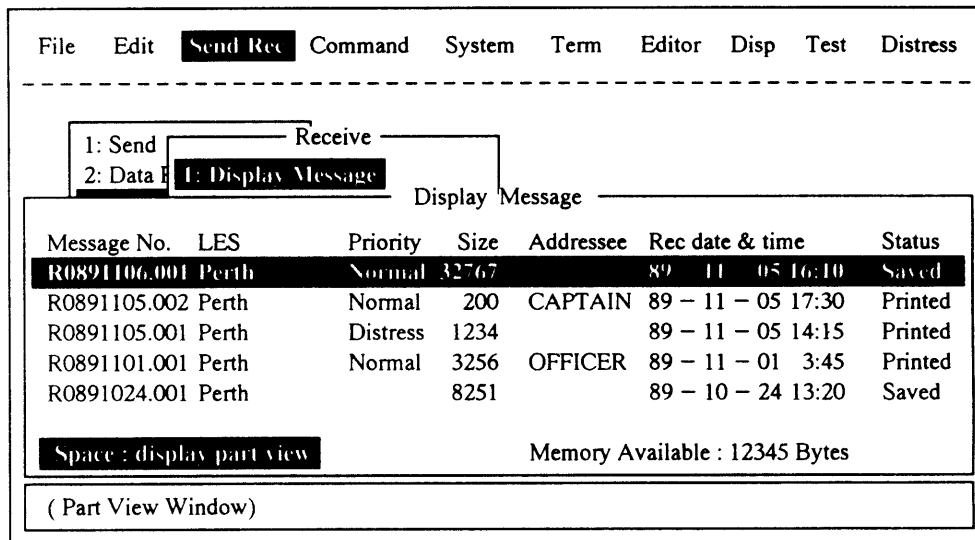
3 Displaying and printing receive messages

To display and print receive messages;

1. Press **[F3]** to display the **SEND/REC** menu.
2. Press **[3]** to display the **RECEIVE** sub menu.



3. Press **[1]** or **[Enter]** to display the **DISPLAY MESSAGE** screen.

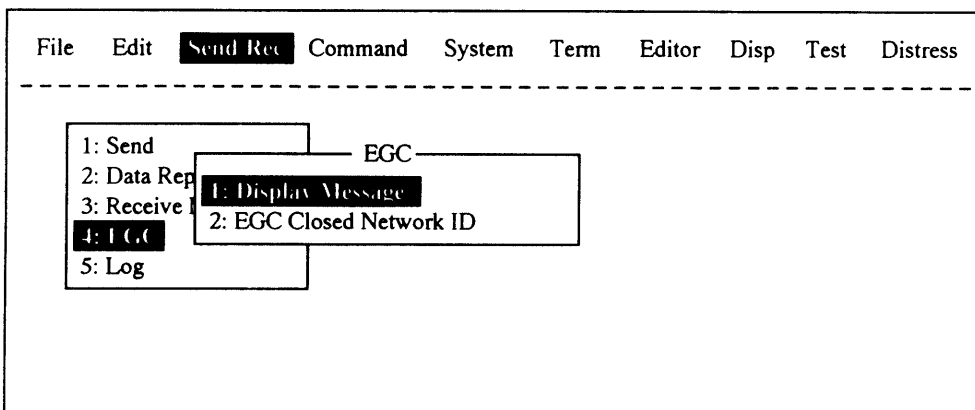


4. Press **[↓]** or **[↑]** to select the file you want to display.
5. Press **[Enter]** to display contents of file selected.
6. If necessary, press **[↓]** or **[↑]** to scroll the message.
7. To print it out, press **[P]** while holding down **[Ctrl]**.

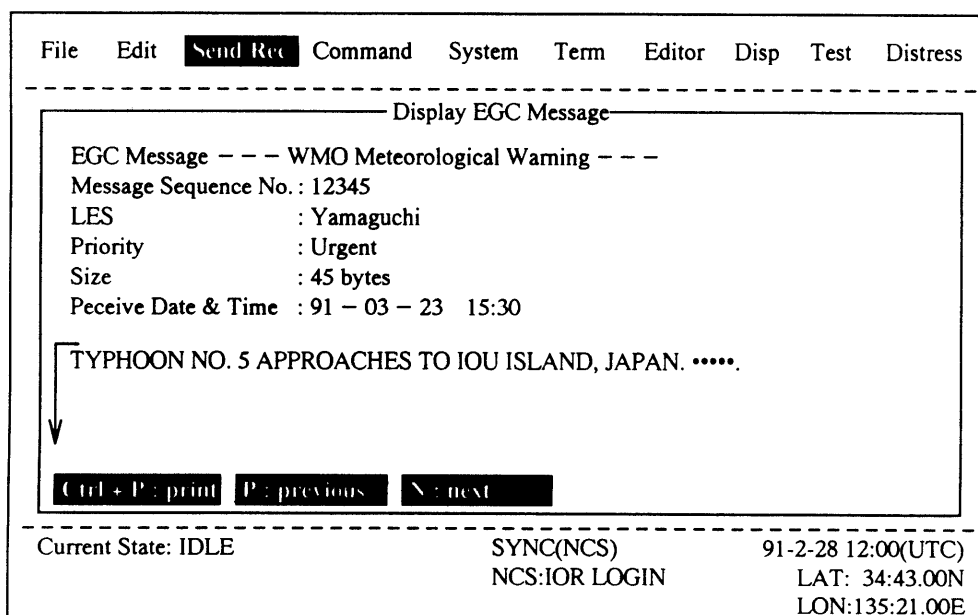
4 Displaying and printing EGC messages

To display and print EGC messages;

1. Press **[F3]** to display the SEND/REC menu.
2. Press **[4]** to display the EGC sub menu.



3. Press **[1]** or **[Enter]** to display the latest EGC message.



4. If necessary, press **[↓]** or **[↑]** to scroll the message.
5. Press **[N]** or **[P]** to display the next or previous message, respectively.
6. To print out the message displayed, press **[P]** while holding down **[Ctrl]**.

SHORTCUT KEY OPERATION

The FELCOM 10 provides the keyboard shortcuts shown below for commonly used functions. These shortcuts can be used without pressing a function key.

Shortcut Key	Function
ALT + N	Same as NEW in File menu
ALT + O	Same as OPEN in File menu
ALT + Q	Same as CLOSE in File menu
ALT + D	Same as DELETE in File menu
ALT + S	Same as SAVE in File menu
ALT + P	Same as PRINT in File menu
ALT + X	Same as UNDO in Edit menu
DELETE	Same as CUT in Edit menu
ALT + C	Same as COPY in Edit menu
INSERT	Same as PASTE in Edit menu
HOME	Same as GOTO TOP in Edit menu
END	Same as GOTO BOTTOM in Edit menu
ALT + V	Same as CHANGE WINDOW in Edit menu

LES ID List

LES	AOR West	AOR East	IOR	POR
Perth			322	222
France Telecom		121	321	
Blaavand		131		
Sentosa			328	210
Goonhilly	002	102		
Burum	012	112	312	
Eik		104	304	
Beijing			311	211
Fucino		105	335	
Sounthbury	001	101		
Raisting		115	333	201
Santa Paula				201
Yamaguchi			303	203

INTERNATIONAL TELEPHONE/TELEX COUNTRY CODES

(main countries only)

Country	Telephone Country Code	Telex Country code	Remarks for TLX	Country	Telephone Country Code	Telex Country Code	Remarks for TLX	Country	Telephone Country Code	Telex Country Code	Remarks for TLX
Argentina	54	33		Hong Kong	852	802		Phillipines	63	75	
Australia	61	71		Iceland	354	501		Poland	48	63	
Belgium	32	46		India	91	81		Portugal	351	404	
Brazil	55	38		Israel	972	606		Russia	7	64	
Bulgaria	359	67		Italy	39	43		Singapore	65	87	
Canada	1	21, 26		Japan	81	720	NTT	S. Korea	82	801	
Chile	56	34		Liberia	231	997		Spain	34	52	
China	86	85		Malaysia	60	84		Sweden	46	54	
Costa Rica	506	376		Mexico	52	22		Taiwan	886	769	
Cuba	53	28		Morocco	210	407		Turkey	90	607	
Denmark	45	55		Netherlands	31	44		U. K.	44	51	
Egypt	20	91		NewZealand	64	74		U. S. A.	1	23, 25	
Finland	358	42		Norway	47	56		Venezuela	58	31	
Germany	49	69		Oman	968	498		AOR-W	874	584	
Greece	30	601		Pakistan	92	82		AOR-E	871	581	
Greenland	299	503		Panama	507	377	TRT	POR	872	582	
Hawaii	1	704	RCA			379	INTEL	IOR	873	583	
		705	ITT	Peru	51	36					

