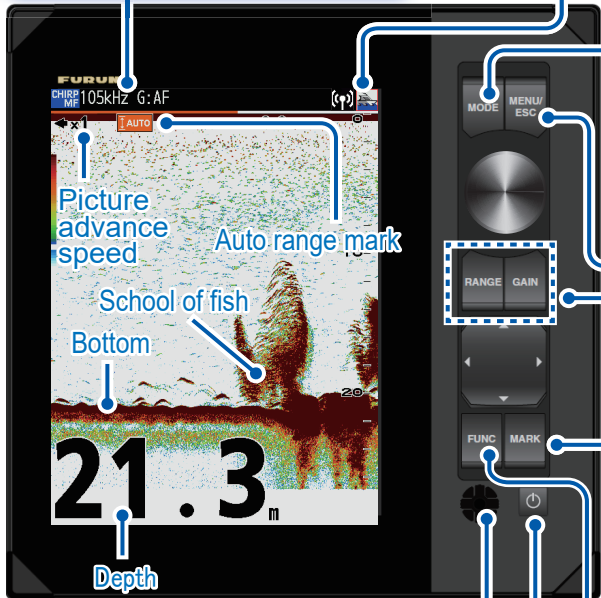


Alarm Icons

- : Fish alarm
- : Voltage alarm (High)
- : Speed alarm
- : Voltage alarm (Low)
- : Arrival alarm
- : Wireless LAN (Use FCV unit as access point)
- : Wireless LAN (Use existing access point)

Display mode, frequency, sensitivity mode/value



How to select display mode

MODE → [MODE] → MODE

MODE	
Mode1:	CHIRP (H)
Mode2:	CHIRP (L)
Mode3:	CHIRP (L) / CHIRP (H)
Mode4:	BL / CHIRP (H)
Mode5:	BL / CHIRP (L)
Mode6:	NAV4 / CHIRP (H)
Mode7:	NAV2 / CHIRP (L)

Select mode

Displayed at the top of the screen:
 CHIRP: CHIRP Transducer, CW: CW Transducer
 HF: High freq. MF: Medium freq. LF: Low freq.
 BL: Bottom Lock, BZ: Bottom Zoom
 MZ: Marker Zoom

Opens/Closes the menu

How to register waypoint

(Navigation connection required)

MARK → [MARK] → MARK → [MENU/ESC]

Move the cross-cursor to the position to be registered

How to use FUNCTION key

How to open the registered setting window

FUNC → Short press → [Pic. Advance]

x8
x4
x2
x1
1/2
1/4
1/8
1/16
Stop

Default state

Rotate to select setting value → Press

How to register an item for instant display

FUNC → Long press → [FUNC Key]

Pic. Advance
Range Shift
Interference
Clutter
Color Erase
White Line
Marker
MPT List
Bottom Zone
Zoom Range
BL Range
ACCU-FISH
CHIRP Preset

Rotate to select the item → Press

How to adjust the brilliance/panel dimmer

BRILL → Short press → [Brilliance/Panel Dimmer]

Brilliance	: 9
Panel Dimmer	: 5
Mode	: Day

Brilliance → Panel Dimmer → Adjust

(Long press: Turn off the power)

How to choose a range

(Disabled when using the bottom discrimination function.)

RANGE → [Range] → Auto Manual

15ft
30ft
60ft
120ft
200ft
400ft
600ft
1000ft

Select mode → Auto → Manual → Press → Range is automatically changed.

How to adjust the gain

GAIN → [Auto Gain]

Off
Fishing
Cruising

Select mode → Fishing → Cruising → Off → Press → Adjust → Gain is automatically adjusted.

Displayed at the top of the screen:
 G: 0 - 100 (Auto Gain: Off)
 G: AF (Auto Gain: Fishing)
 G: AC (Auto Gain: Cruising)