

Radar Controls

BRILL

Rotate: Adjusts the brilliance of the monitor.
Push: Selects a color palette.



GAIN

Adjusts the sensitivity of the radar receiver.

A/C RAIN

Rotate: Suppresses rain clutter.
Push: Toggles between manual and automatic rain clutter adjustment.

A/C SEA

Rotate: Suppresses sea clutter.
Push: Toggles between manual and automatic sea clutter adjustment.

Rotary control for VRM

Adjusts the diameter of the active VRM.

VRM1, VRM2

Activates or deactivates the respective VRM.

Status LED

The color and state of the LED change according to system or alert status.

Power switch

Turns the system on or off.
(This switch does control monitor on/off.)

Rotary control for EBL

Adjusts the active EBL.

EBL1, EBL2

Activates or deactivates the respective EBL.

ALARM ACK

Acknowledges alerts; silences the audio alarm.



USB port (under cover)

For connection of a USB flash memory.
To use the USB port, connect the processor unit to the USB port at the rear side of the control unit, using the optional USB cable.

Trackball module

Operates similar to a PC mouse.

InstantAccess knob

Rotate: Selects the buttons on the InstantAccess bar™.
Push: Activates functions of the buttons on the InstantAccess bar™.

ESC

Goes back one step in current operating sequence on the InstantAccess bar™.

UNDO

Undoes edit or text input when creating a radar map, route, user chart.

RANGE

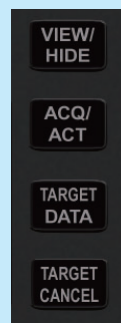
Selects radar range (radar and chart radar modes), chart scale (chart mode).



VIEW/HIDE

Radar mode, chart radar mode: Shows or hides AZ box, Drop mark boxes, Mark box, PI line box, Trial box.

Chart mode: Shows or hides EBLs, InstantAccess bar™, [Overlay/NAV Tools] box, [Route information] box, VRMs.



ACQ/ACT

TT: Acquires cursor-selected target, for target tracking.

AIS: Activates cursor-selected sleeping AIS target.

TARGET DATA

Displays the detailed data for selected TT, AIS target, in the TT/AIS information box.

TARGET CANCEL

TT: Stops tracking cursor-selected tracked target.

AIS: Sleeps cursor-selected activated AIS target. Long-press to erase all displayed TT target data.

See the next page.

Radar Controls (con't)



7
VECTOR
TIME

VECTOR TIME

Sets the vector time (length) for TT and AIS targets.

8
VECTOR
MODE

VECTOR MODE

Sets the vector mode (relative, true) for TT and AIS targets.

9
TARGET
LIST

TARGET LIST

Displays the TT and AIS target list.

1
HL
OFF

HL OFF

Temporarily erases everything except radar echoes when pressed and held down.

2
EBL
OFFSET

EBL OFFSET

Activates or deactivates the offset EBL.

3
MODE

MODE

Selects a presentation mode.

1
HL
OFF

2
EBL
OFFSET

3
MODE

4
OFF
CENTER

5
CU/TM
RESET

6
INDEX
LINE

7
VECTOR
TIME

8
VECTOR
MODE

9
TARGET
LIST

←
TRAIL

0
PANEL

→
MARK

STBY
TX

MENU

CANCEL

ENTER

STBY
TX

STBY/TX

Toggles the radar between standby and TX.

MENU

MENU

Opens, closes the menu.

CANCEL

CANCEL

Cancels the changes made on the currently selected menu.

ENTER

ENTER

Confirms selection on menu.

4
OFF
CENTER

OFF CENTER

Puts sweep origin at the cursor location.

5
CU/TM
RESET

CU/TM RESET

Course-up: Resets heading line to 000°.
True motion: Moves own ship position 75% of the radius in stern direction.

6
INDEX
LINE

INDEX LINE

Short press: Selects an index line.
Long press: Activates or deactivates selected index line.

←
TRAIL

TRAIL

Short press: Turns the echo trail display on or off.
Long press: Resets all trails.

0
PANEL

PANEL

Adjusts the backlighting of the keys.

→
MARK

MARK

Inputs selected mark, at the position selected.

Radar Display Indications

6.00 NM +
/2.00 -
Head up RM

Range/Presentation mode box

- Selects the radar range.
- Selects the presentation mode.



Tuning bar

Shows tuning status except for solid state radar.

REF point
CCRP

REF point box

Selects the reference point (antenna or CCRP) for measurements (range, bearing, etc.) and markers (position, etc.)

Status bar (see page 5)

Cursor position box

This box shows

- Latitude and longitude of the cursor position.
- Range and bearing to the cursor position.
- TTG to the cursor position.

Sensor information, datum box

Shows your ship's heading, heading source, ship's speed, water tracking speed, speed source, course over ground, speed over ground, course and speed source, ship's position, position source, chart datum.

← MENU →

Menu

Drop-down menu with various radar and chart radar functions.

NAV data/Route information box

Provides various navigation data and route information.

InstantAccess bar™ (see page 6)

Quick access to often-used radar, chart radar functions.

Watch
05:18

Watch box

Counts down the time remaining until the buzzer sounds to alert the operator to view the radar picture.

PI
PI 6 OFF
000.0° R
0.000 NM

PI line box

- Adjusts the direction and width of the parallel index lines.
- Activates or deactivates the parallel index lines.

Mark
MAP1

Mark box

Selects the mark to inscribe on the radar display.

Drop 1
085.2° R
6.961 NM

Drop mark 1 box

Shows the bearing and range to the drop mark 1.

EBL 1
019.8° R
EBL 2
300.0° R

EBL1, 2 boxes

Shows the bearing to EBL1, EBL2.

Drop mark 2 box

Shows the bearing and range to the drop mark 2.

VRM 1
7.367 NM
VRM 2
5.339 NM

VRM1, 2 boxes

Shows the range and TTG* to VRM1, VRM2.

*: Function activated from menu.

Chart Radar1
Lost Radar ANT

Alert box

Shows alert message and alert source.

Target List

Target List button

Displays the TT and AIS target list.

Trial
00:00 OFF
000.0° T
0.0 kn
DELAY
0.0 min

Trial maneuver box

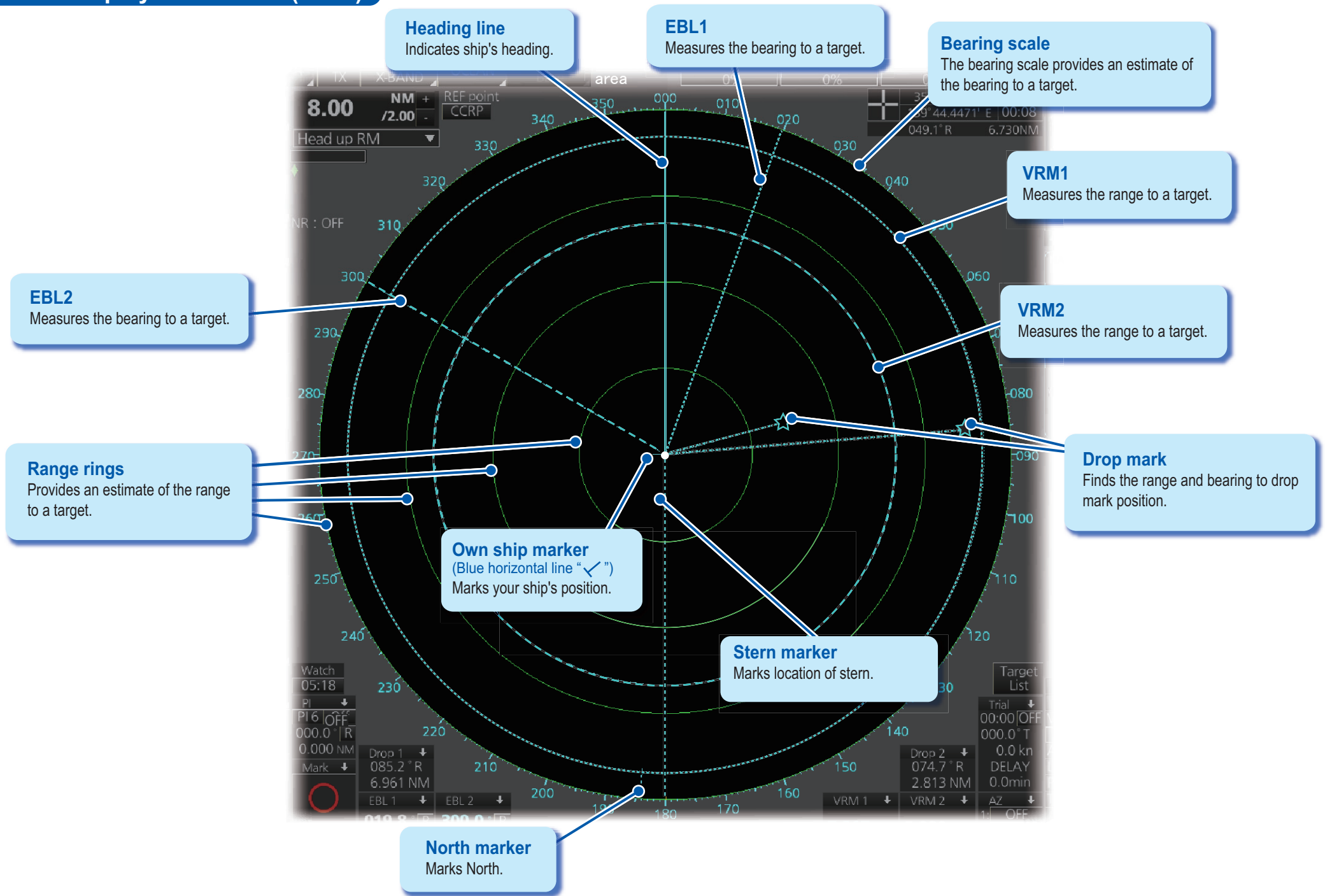
Sets the parameters for the trial maneuver.

AZ
1: OFF
2: OFF

Acquisition zone box

Sets an acquisition zone for TT, AIS.

Radar Display Indications (con't)



Status Bar (radar, chart radar mode)

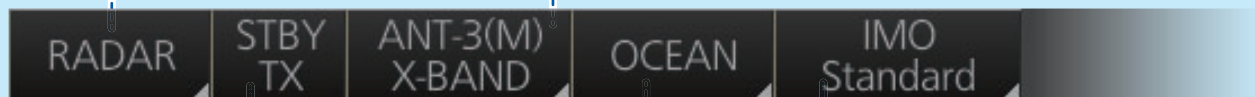
Operating mode

Selects an operating mode: RADAR, CHART for RADAR or CONNING for RADAR*

* Optional specification

Antenna

Selects an antenna.



STBY TX

Toggles the radar between stand-by and transmit.

Chart database

Selects the chart database (IMO base, IMO Primary, IMO Standard or IMO All).

Customize Echo

Presets the radar controls for specific navigation purpose; for example, set up to use the radar in congested waters.

Status Bar



RAIN

Reduces rain clutter.

SEA

Reduces sea clutter.

GAIN

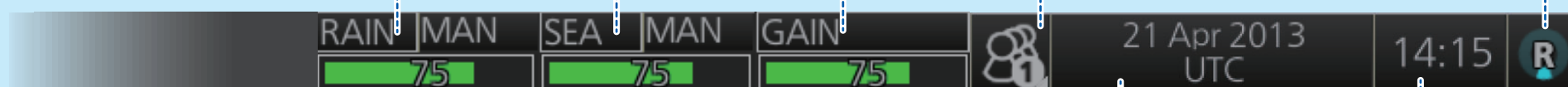
Adjusts the gain of the radar receiver.

User profiles, Settings menu

Manages user profiles; opens the Settings menu.

Working indicator

Rotates clockwise if the system is working properly.



Date

Displays the date; selects the time to use, local or UTC.

Time

Displays the time.

Instant Access Bar™ (radar, chart radar mode)

PULSE M3
Selects the radar pulse length.

***1**
TUNE MAN **TUNE** (other than solid state radar)
Tunes the radar receiver.
TX CH 1 **TX CH** (for solid state radar)
Selects the transmit frequency.

IR OFF **IR**
Activates or deactivates the interference rejector.

ES OFF **ES**
Activates or deactivates the echo stretch.

ACE OFF **Automatic Clutter Elimination (ACE)**
Activates or deactivates the Automatic Clutter Elimination (ACE) function. Automatic Clutter Elimination (ACE) automatically sets the gain, rain and sea clutter controls.

***2**
Automatic Clutter Elimination (ACE) function is off

EAV OFF **EAV**
Activates or deactivates the echo averaging.

Automatic Clutter Elimination (ACE) function is on
EAV OFF **Automatic Clutter Elimination (ACE) mode**
The indication for the EAV button is grayed out.

HL OFF **HL OFF**
Temporarily erases everything but radar echoes.

CU/TM reset **CU/TM reset**
Resets ship's position in course-up and true motion modes.

OWN AIS **OWN AIS**
Shows the [VOYAGE DATA] menu, to set your ship's AIS data.

AIS **AIS message**
Displays screen for "received AIS messages".

Day **Palette**
Selects a color palette.



Radar mode

MAP ON **MAP ON/OFF**
Shows or hides the radar map marks on the radar display, in the radar mode.

Chart OFF **Chart ON/OFF**
Shows or hides the electronic chart.

Chart Disp

Chart radar mode

MAP OFF

Chart ON **Chart ON/OFF**
Shows or hides the electronic chart.

Chart Disp **Chart Disp**
Shows or hides various chart objects.

Coast Line Only	Chart Top Layer	Chart DISP Menu	Sel DISP Object	Chart Legend
-----------------	-----------------	-----------------	-----------------	--------------

--- Show chart information for current position. (Own ship must be centered.)
--- Opens the [SEL DISPLAY OBJECT] menu.
--- Opens the [CHART DISPLAY] menu.
--- Puts the chart objects on the top layer when clicked.
--- Shows only the coastline when clicked.

88 **BRILL**
Adjusts the brilliance of the monitor.

MOB **MOB**
Enters a MOB mark at the current position.

Capture
Takes a screenshot.

UNDO
Restores previous condition in radar map and text input.

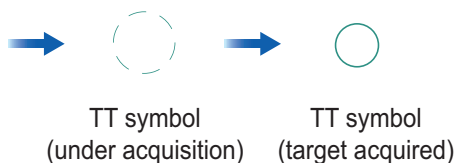
TT Operations

TT symbols

Symbol	Name
	Target under manual acquisition (green)
	Target under automatic acquisition (red)
	Acquired target (green)
	Dangerous target (red)
	Lost target (red)
	Association AIS target (green)
	Dangerous association AIS target (red)

How to manually acquire a target for tracking

Click the radar echo.



How to show a tracked target's data

Click the TT symbol.

TT	
001	
BRG	094.7° T
RNG	4.995NM
TCOG	330.5° T
T SOG	0.00kn
CPA	4.937NM
TCPA	00:00
BCR	>999.9NM
BCT	>99:59

How to stop tracking a target

Right-click the display area to show the context-sensitive menu.

Target Data/ACQ/ACT
Target Cancel
Off Center
EBL Offset
Zoom Set
Area Select
Mark Delete
Mark Copy
Own Ship Offset
REF Mark
Cursor Size

Select [Target Cancel] then click the TT symbol.

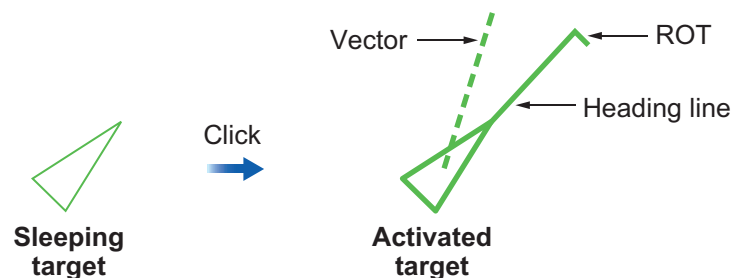
AIS Operations

AIS symbols

Symbol	Name
	Sleeping AIS target (green)
	Activated AIS target (green, thick line)
	Association AIS target (green)
	Dangerous AIS target (red)
	Dangerous association AIS target (red)
	Lost AIS target (red)

How to activate a sleeping target

When you convert a sleeping target to an activated target, the activated target's course and speed are shown with a vector. You can easily judge target movement by monitoring the vector.



How to show an AIS target's data

Click the AIS target symbol.

AIS A	
FURUNO	
BRG 152.1° T	HDG
RNG 6.888NM	040.0° T
COG 040.0° T	ROT
SOG 10.00kn	+000.0° /min
CPA 6.381NM	
TCPA 15:34	
BCR -6.869NM	STATUS
BCT 01:05	Underway
50° 57.0508' N	using
001° 27.9086' E	engine

TT/AIS

The TT/AIS setting box shows or hides the TT and AIS displays, and sets the CPA/TCPA alarm, the past position display, vector time and reference, etc.

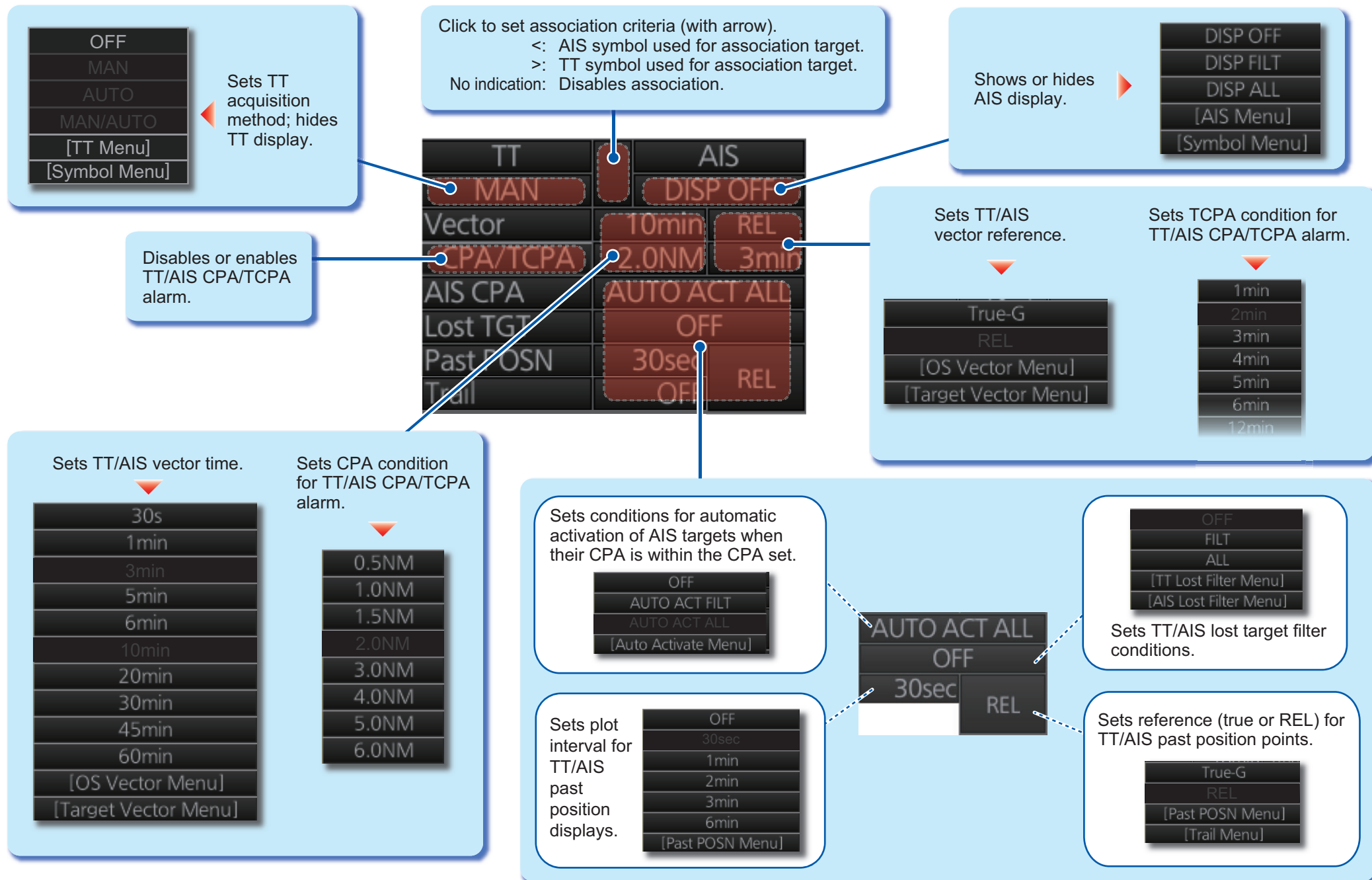
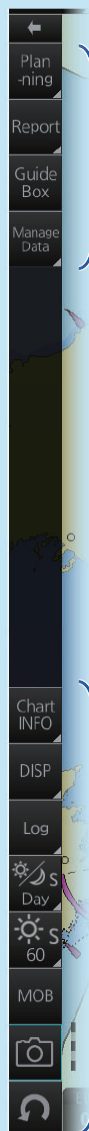


Chart Display Layout

Status bar (see page 10)



InstantAccess bar™
(see page 11)



Upper section

Lower section

Chart scale, presentation mode box

Cursor position box

Sensor information box

HDG	121.8°	GYRO1
SPD	50.0kn	LOG1
	0.3kn	BT
COG	121.5°	LOG1
SOG	10.1kn	
POSN	35°18.956' N	
GPS1	139°48.684' E	

Own ship functions box

Offset
WGS84
Ship off screen

Route information box

Route Information
Route : route1
Plan Speed : 20.0 kn
Plan Course : 206.5°
Course to Steer : 181.1°
XTD Limit : 185.0 m
XTD : 4388.4 m
To WPT : 2
DIST to WOP: 6.95 NM
Time to Go : 0: 8'21"
Turn RAD : 0.80 NM
ROT : ***.°/min
Next WPT : 3
Next Course : 218.1°

Overlay/NAV Tools box

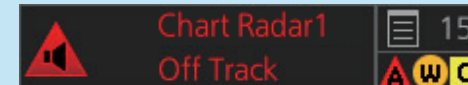
TT/AIS	←	→
TT	OFF	AIS
Vector	6min	REL
CPA/TCPA	OFF	
AIS CPA	OFF	
Lost TGT	OFF	
Past POSN	OFF	REL
✓ SYNC ANT		
TT Source: ANT_1		CCRIP

EBL1 box,
EBL2 box

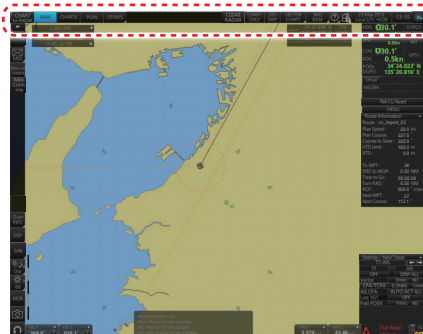
Permanent warning box

VRM1 box,
VRM2 box

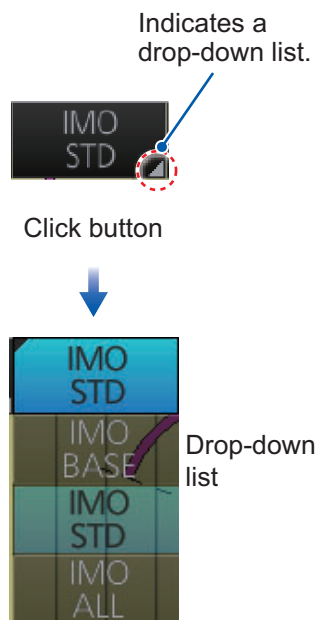
Alert box



Status Bar (chart for radar mode)



How to open a drop-down list



OTHERS Sets system in silent.

PLAN Selects the Voyage planning mode.

CHARTS Goes to the Chart maintenance mode.

NAVI Selects the Voyage navigation mode.

Operating mode Selects an operating mode: RADAR, CHART for RADAR or CONNING for RADAR*
* Optional specification



CLEAR RADAR

Hides radar echoes and TT/AIS symbols. Available only when radar overlay is active, or when there is at least one TT/AIS symbol displayed.

No use.

STD DISP

Restores the IMO standard display.

CHART ONLY

Shows only the chart, when left button is pressed and held down.

User profiles, Settings menu

Manages user profiles; opens the Settings menu.

Displays the operator's manual, chart program no. and system information.

Chart database

Selects the pre-defined presentations of ENC content: IMO BASE, IMO STD or IMO ALL.

Working indicator

Rotates clockwise if the system is working properly.

Time

Displays the time.

Date

Displays the date; selects the time to use, local or UTC.

Upper section (by chart operating mode)

Voyage navigation mode

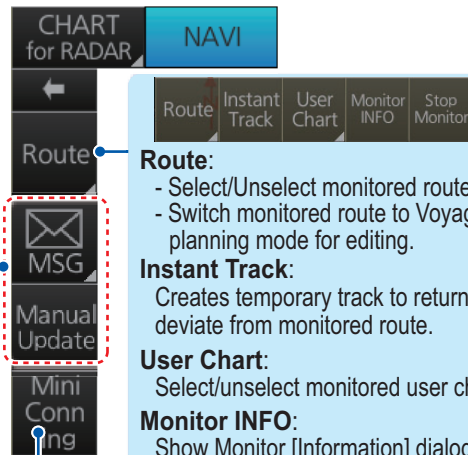
MSG:

Opens the Message dialog box to manage AIS Safety and NAVTEX messages.



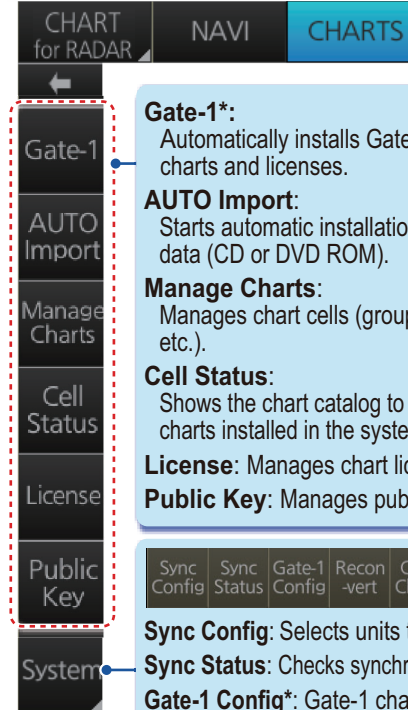
Manual Update:

Opens the Manual Update dialog box to insert chart update symbols manually.



Mini Conning:
Shows or hides the mini conning display.

Chart maintenance mode



Gate-1*:

Automatically installs Gate-1 provided charts and licenses.

AUTO Import:

Starts automatic installation of the chart data (CD or DVD ROM).

Manage Charts:

Manages chart cells (grouping, deleting, etc.).

Cell Status:

Shows the chart catalog to get info about charts installed in the system.

License:

Manages chart licenses.

Public Key:

Manages public keys.

Sync Config:

Selects units to synchronize.

Sync Status:

Checks synchronization status.

Gate-1 Config*:

Gate-1 chart management.

Reconvert:

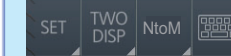
Reconverts SENC data.

Clear Charts:

Clears charts.

*Shown only with Gate-1 connection.

Lower section



SET:

Shows or hides chart features; sets chart alerts.

TWO DISP:

Splits the screen in two, horizontally or vertically.

NtoM:

Displays Notice to Mariners info.



Shows or hides software keyboard.



Chart Legend:

Shows chart legend, with your vessel at the center, in the Voyage navigation mode.

Viewing Dates:

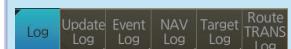
Sets "Display date" and "Update Review" dates.

Chart 1:

Provides overview of chart symbols.

Log:

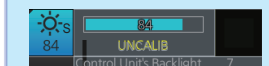
Records user/position events to the event log; accesses various logs.



Selects a color palette.



Adjusts brilliance of monitor and control unit backlighting (chart for radar mode only.)



MOB:

Enters a MOB mark.

Takes a screenshot.



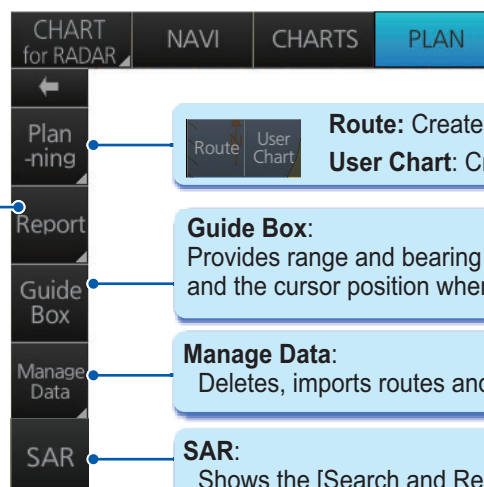
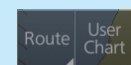
Restores previous condition in route and user chart creation.



Voyage planning mode

Report:

See reports on waypoints and voyage planning related routes and user charts.



Route: Creates a route (see page 12).

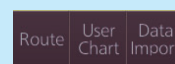
User Chart: Creates a user chart (see page 14).

Guide Box:

Provides range and bearing information between the last waypoint and the cursor position when creating a route.

Manage Data:

Deletes, imports routes and user charts.



SAR:

Shows the [Search and Rescue Settings] dialog box.

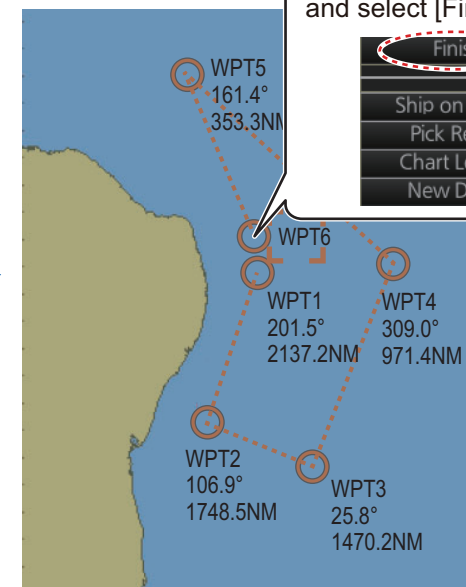
Routes

How to create, check a route

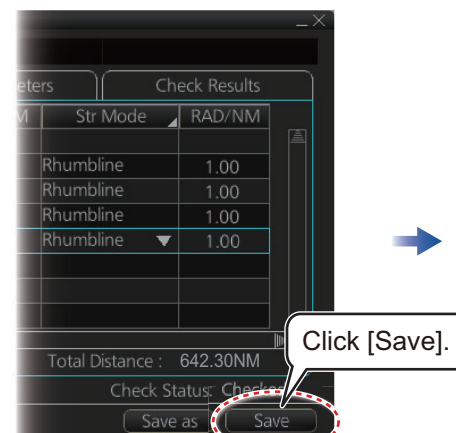
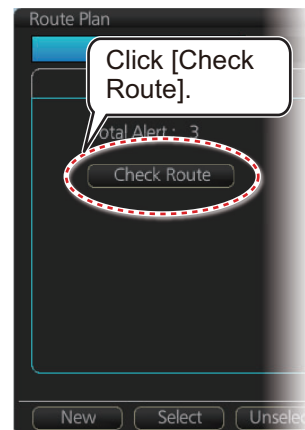
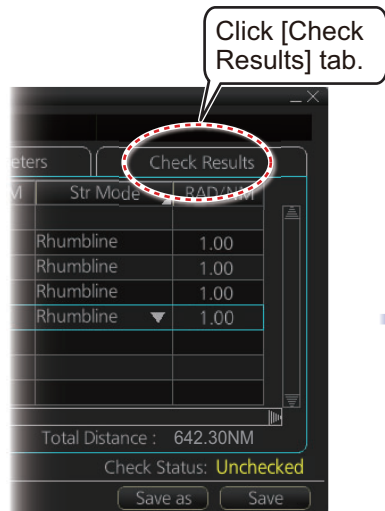
PLAN

Plan-ning

Route

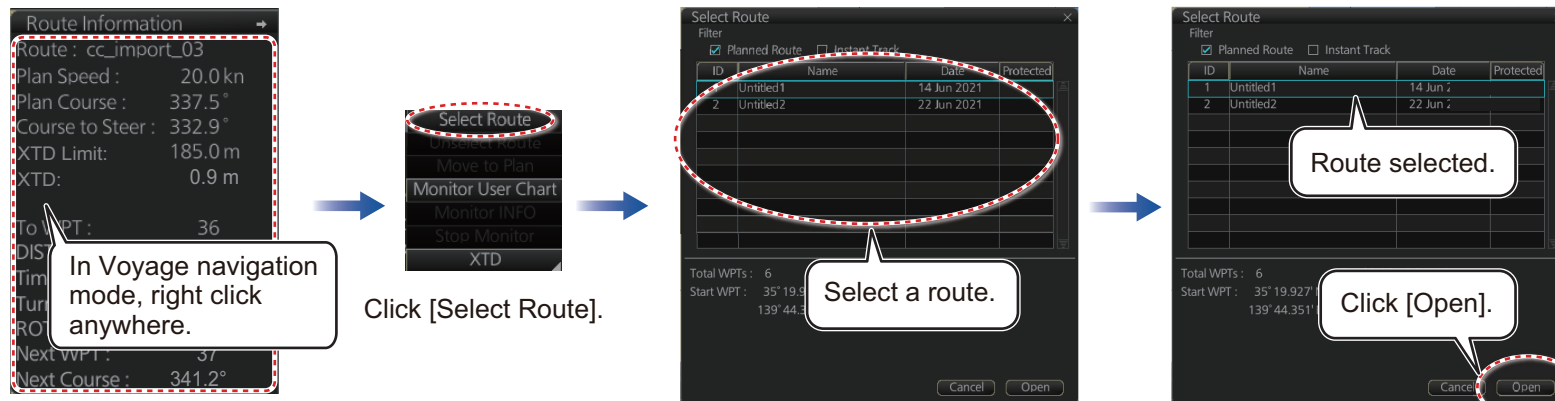


Continue entering waypoints.



Routes (con't)

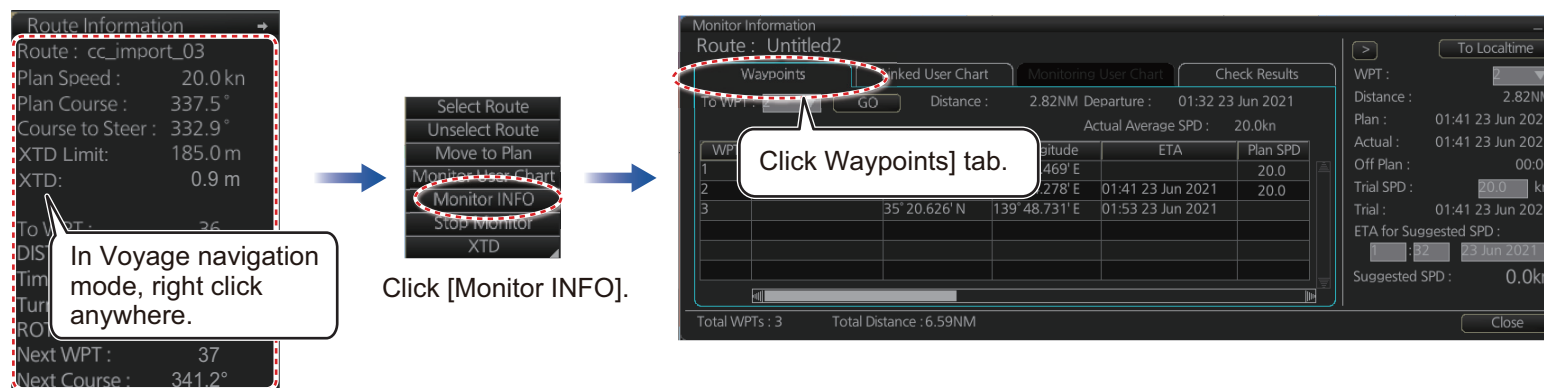
How to select a route to monitor



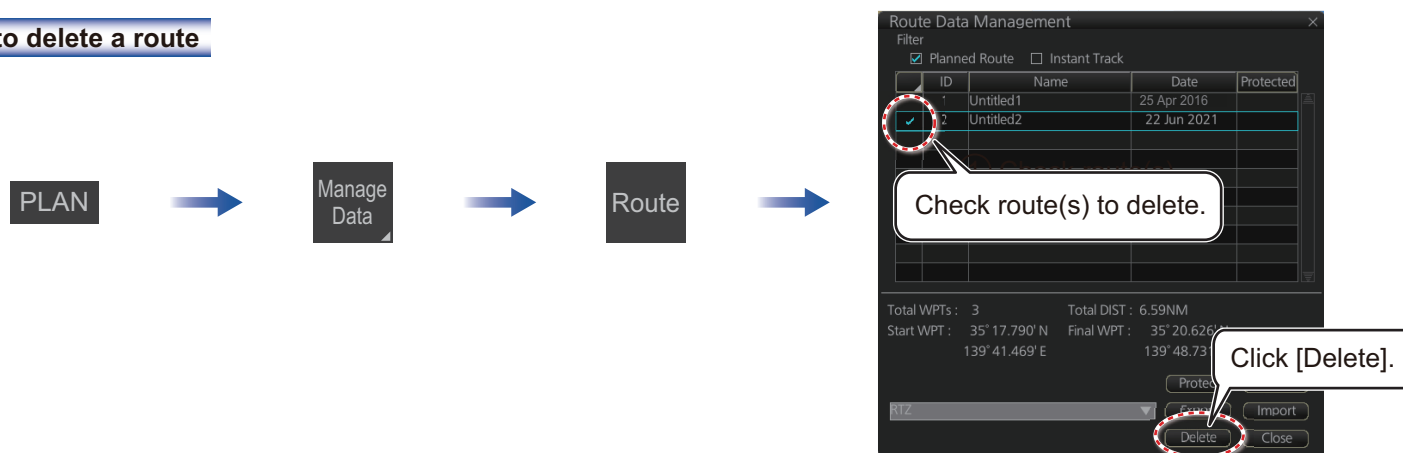
To stop monitoring a route:



How to view route waypoint information

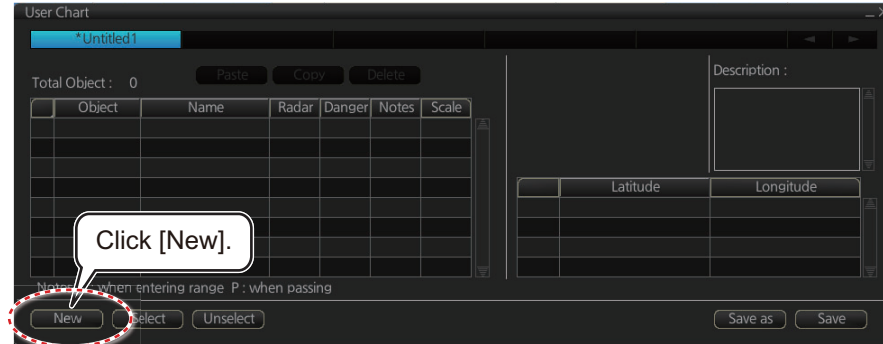


How to delete a route



User Charts

How to create a user chart



Click object to draw.

Tidal:

- Current
- Predicted

Line:

- Coast
- Route
- Nav
- Depth

Clearing line:

- NMT
- NLT

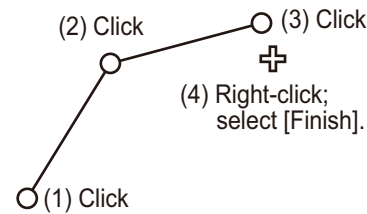
Area

Circle

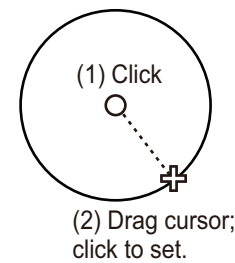
Label:

- Label - Triangle
- Point - Diamond
- Circle - Pin

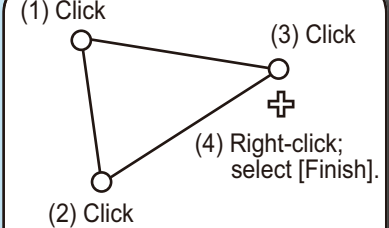
How to create a line



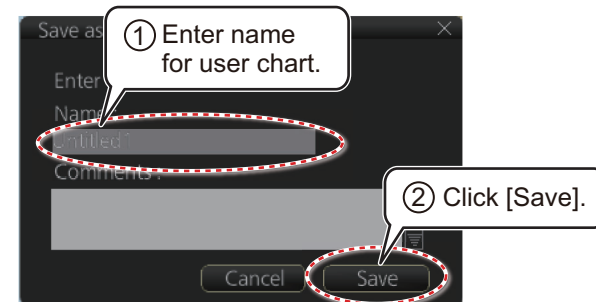
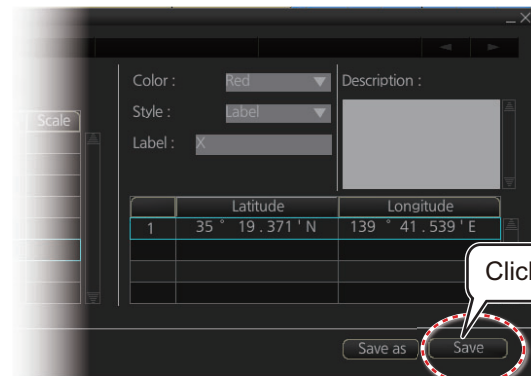
How to create a circle



How to create an area

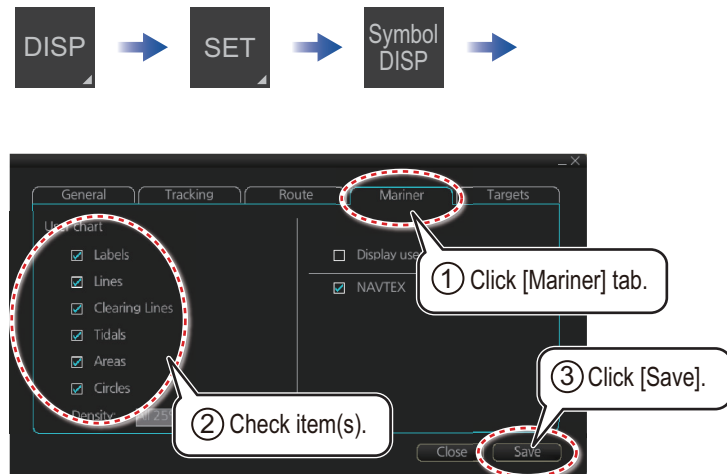


Example objects

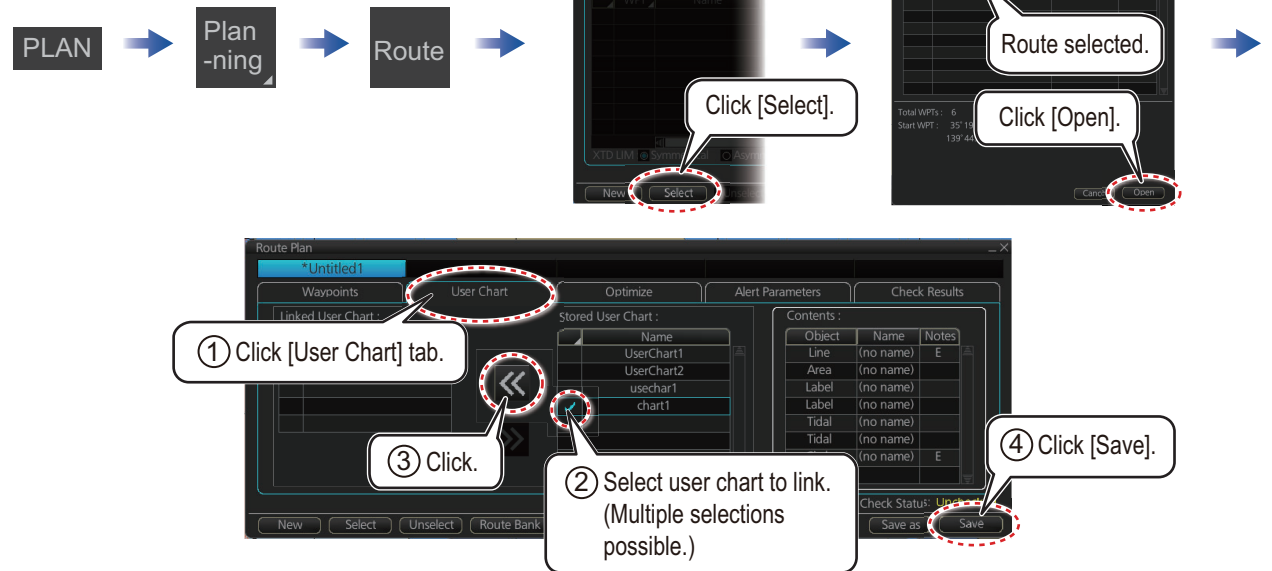


User Charts (con't)

How to select objects to display in user chart

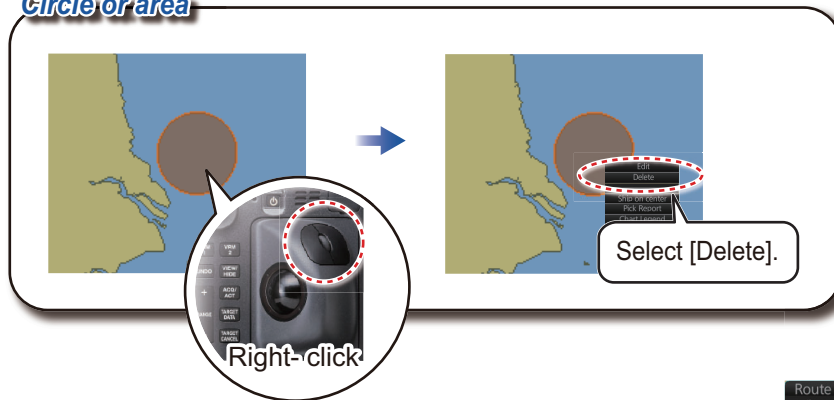


How to link a user chart to a route

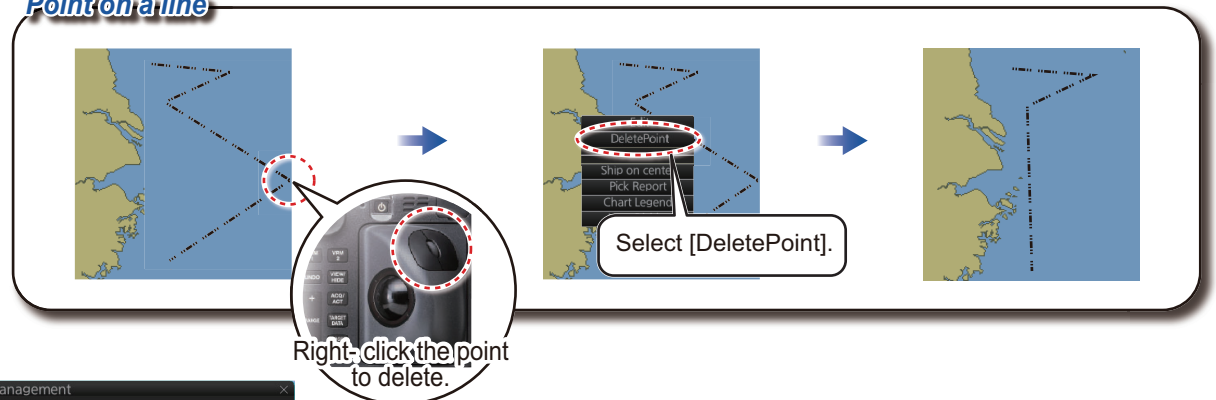


How to delete objects from a user chart

Circle or area



Point on a line



How to delete user charts

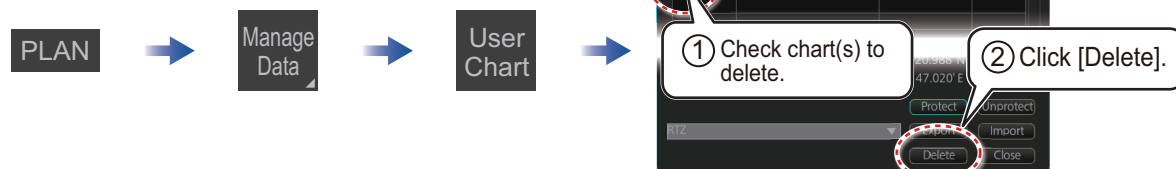


Chart Operations

How to control visibility of chart objects

DISP

SET

Basic
Setting

Control basic
chart settings

Chart
DISP

Control chart
objects

Symbol
DISP

Control
navigational
features

Basic Setting

Light Popup:

Attributes Display:

TM Reset:

General Standard Other Text NtoM

Symbols:

Boundaries:

☐ Four Shades

☐ Full Light Lines

☐ Scale MIN

☐ Shallow Pattern

☐ Shallow Water Dangers

☐ Unknown

☐ Accuracy

☐ Highlight Date Dependent

☐ Highlight INFO

☐ Highlight Document

☐ Contour Labels

☐ LAT/LON Grid

General Standard Other Text NtoM

☐ Drying Line

☐ Buoys, Beacons, Aids to Navigation

☐ Buoy, Beacons, Structures

☐ Buoy, Beacons

☐ Radar

☐ Fog Signals

☐ Others

☐ Lights

☐ Boundaries and Limits

☐ Prohibited and Restricted Areas

☐ Chart Scale Boundaries

☐ Cautionary Notes

☐ Ships' Routing System and Ferry Routes

☐ Archipelagic Sea Lanes

☐ Services

☐ Miscellaneous

General Standard Other Text NtoM

☐ Spot Soundings

☐ Submarine Cables and Pipelines

☐ All Isolated Dangers

☐ Magnetic Variation

☐ Depth Contours

☐ Seabed

☐ Tidal

☐ Natural and Man-made Features

☐ Port Features

☐ Miscellaneous

General Standard Other Text NtoM

☐ Important Text
(Clearances, Bearings, Routes,
Radio Channels)

☐ Names

☐ Light Description

☐ All Other

☐ Nature of Seabed

☐ Magnetic Variation and Swept
Depth

☐ Height of Islet or Land Feature

☐ NtoM

☐ Others

General Standard Other Text NtoM

AIO

☒ Temporary Notice

☒ Preliminary Notice

☒ No Information

C-MAP

☒ Temporary Notice

☒ Preliminary Notice

☒ No Information

General Tracking Route Mariner Targets

Ship Outlines

Ship Outlines:

AIS Outlines:

True outlines shown if
 > limit

Own Ship Limit = 3 mm

AIS Limit = 3 mm

Velocity Vectors

Ship Vectors:

Target Vectors:

Style:

☐ Time Increments

☐ Path Predictor

☐ Radar Antenna

General Tracking Route Mariner Targets

Own Ship Past Tracks

☐ CCRP

☐ Primary

☐ Secondary

☐ Pivot

Style:

Length: min

Labels: min

Events

☐ User Events

☐ Auto Events

☐ Position Events

Show

General Tracking Route Mariner Targets

Monitored Route

☐ XTD Limit

☐ Safety Margin

☐ Leg Marks

☐ True ☐ Relative

☐ Wheel Over Line

Planned Route

☐ XTD Limit

☐ Safety Margin

☐ Leg Marks

☐ True ☐ Relative

☐ Wheel Over Line

General Tracking Route Mariner Targets

User chart

☒ Labels

☒ Lines

☒ Clearing Lines

☒ Tidal

☒ Areas

☒ Circles

Density:

☐ Display user chart symbol name

☒ NAVTEX

General Tracking Route Mariner Targets

Color:

AtoN Symbol Color:

TT Size:

AIS ROT TAG Limit: °/min

TT Label:

AIS Label:

TT Pop-up INFO:

AIS Pop-up INFO:

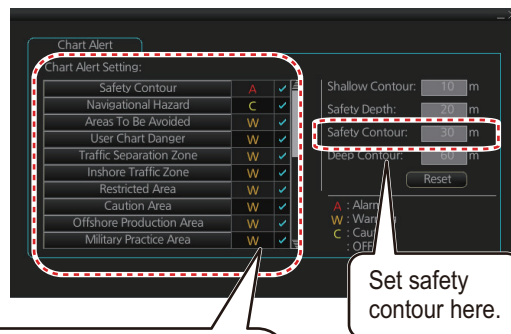
Past Position

TT/AIS Points:

Style:

Chart Operations

How to set safety contours and chart alerts



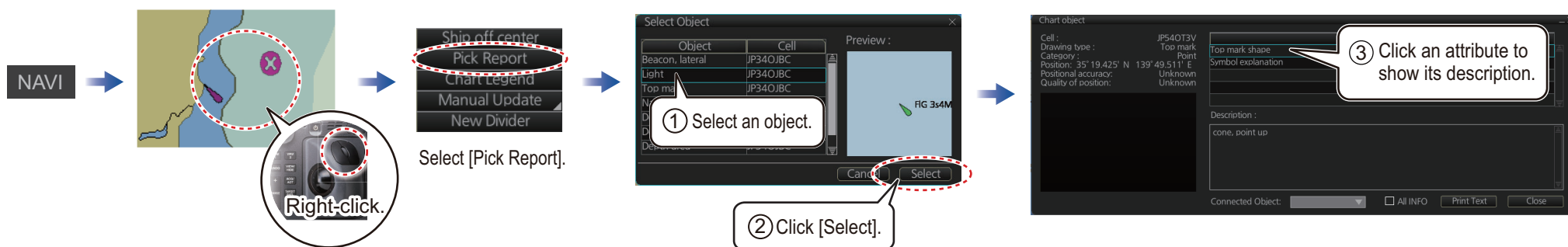
Click to select chart alert type:

- A** (Alarm): Audio+visual indications
- W** (Warning): Visual indication
- C** (Caution): No indication

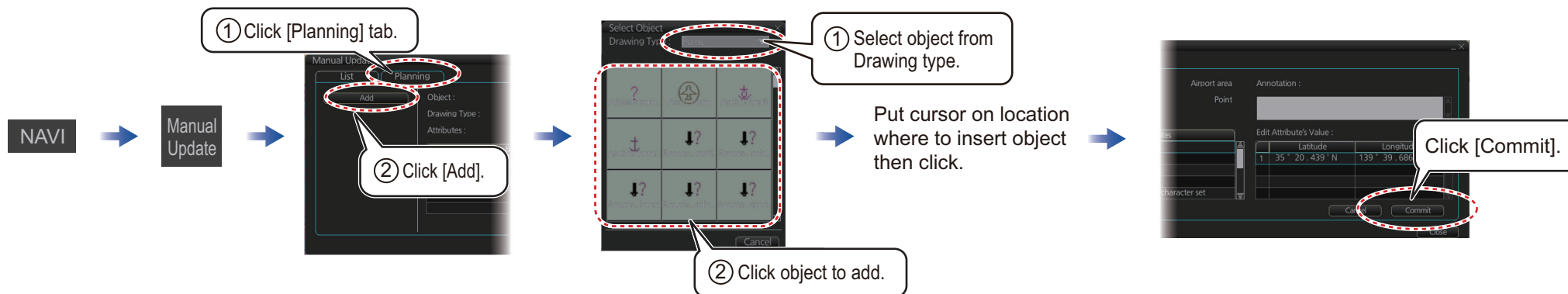
Click icon to switch between **C** and **W** vice versa.

To turn off display of a chart object in route monitoring, remove check mark from alert (alarm, warning, caution).

How to find chart object information (ENC chart)



How to manually insert a "new" chart object



TT/AIS Operations

How to find target info

Click a target to show its information.

TT Info (1/2)

TT No. TT 06

Close

Scroll buttons

Bearing BRG 102.9° T

Range RNG 7.800 NM

Course over ground COG 270.0° T

Speed over ground SOG 10.0 kn

CPA CPA 0.100 NM

TCPA TCPA 00:06

Bow crossing range BCR *** NM

Bow crossing time BCT ***

TT symbols (main)

Symbol (Color)	Name
(Green)	Past position point
(Green)	Target under acquisition
(Green)	Acquired target

AIS Info (1/2)

MMSI MMSI 000001003

Vessel name VESSEL B

Expand

Close

Click to switch level of detail

Scroll buttons

Bearing BRG 141.5° T

Range RNG 74.57 NM

Course over ground COG 90.0° T

Speed over ground SOG 14.0 kn

CPA CPA 28.58 NM

TCPA TCPA -79:29

Bow crossing range BCR 104.0 NM

Bow crossing time BCT >99:59

Position 34° 17.923' N 140° 39.636' E

HDG 90.0° T

ROT +0.0° /min

NAV status: Underway using engine

Navigation status

AIS symbols (main)

Symbol (Color)	Name
(Green)	Past position point
(Green)	Sleeping AIS target
(Green, thick line)	Activated AIS target

How to set up TT and AIS on the TT/AIS page in Overlay/NAV Tools box

Shows or hides TT display.

Disables or enables TT/AIS CPA/TCPA alarm.

Sets TT/AIS lost target alarm conditions.

Sets past position point interval (time).

Sets reference for TT/AIS past position display.

Set association method.

Shows or hides AIS display.

Overlay / NAV Tools

TT/AIS

TT ON

AS DISP OFF

Vector 6min True-G

CPA/TCPA 6.0NM 3min

AIS CPA AUTO ACT FILT

Lost TGT OFF

Past POSN 1min True-G

Sets TT/AIS vector time.

Sets TT/AIS vector reference.

Vector (ex. TT)

Sets CPA and TCPA conditions for TT/AIS CPA/TCPA alarm.

Sets conditions for automatic activation of AIS targets when their CPA is within the CPA set.

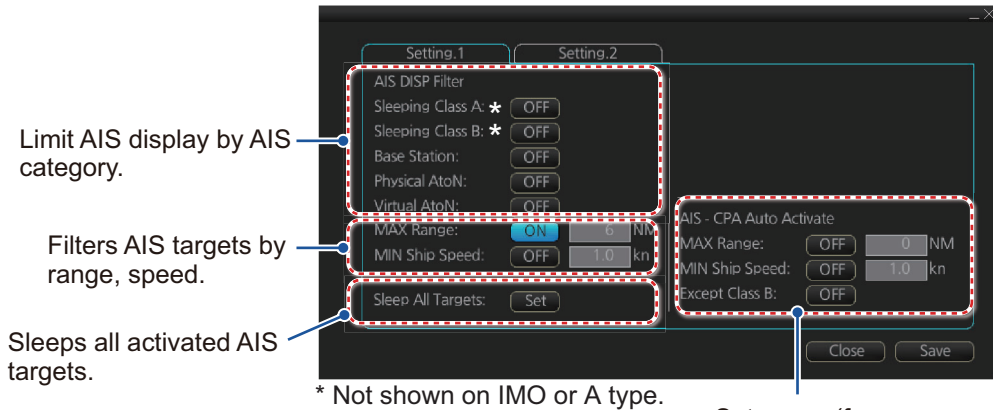
AUTO ACT FILT (ex. AIS)

TT/AIS Operations (con't)

Open the chart menu, select TT/AIS Setting and then Setting. The below menus can also be displayed by clicking the radio button on the pop-up menu that appears when an item other than TT/AIS is selected on the Overlay/NAV Tools box.

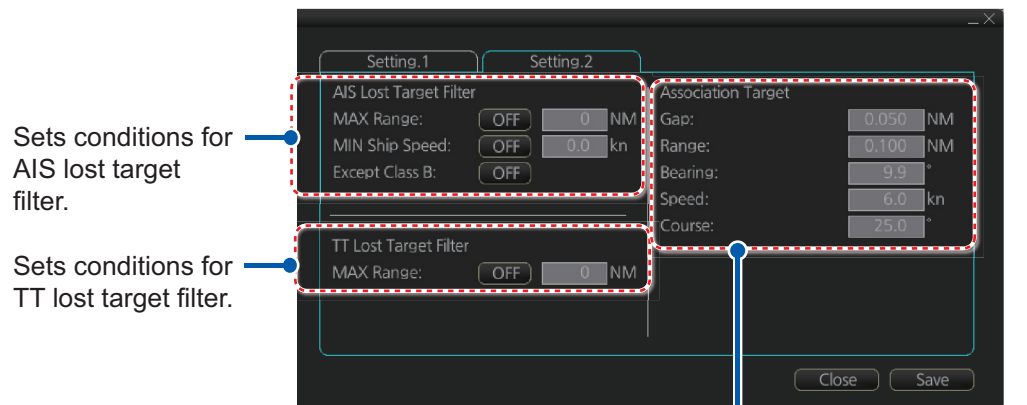


How to filter TT and AIS displays, sleep all targets



Set range (from own ship) to hide vessels beyond the range set.

AIS and TT lost target filters



Alert Icons and Their Meanings

Icon	Alert state	Visual indication
Alert priority: Emergency		
1	Not acknowledged/Not rectified	Red, flashing Presented together with alert text.
Alert priority: Alarm		
2	Not acknowledged/Not rectified	Red, flashing Presented together with alert text.
3	Not acknowledged/Not rectified, Buzzer temporarily silenced	Red, flashing Presented together with alert text.
4	Acknowledged/Not rectified	Red Presented together with alert text.
5	Active - responsibility transferred alarm	Red Presented together with alert text.
6	Not acknowledged/Rectified	Red, flashing Presented together with alert text.
Alert priority: Warning		
7	Not acknowledged/Not rectified	Yellow-orange, flashing Presented together with alert text.
8	Not acknowledged/Not rectified, Buzzer temporarily silenced	Yellow-orange, flashing Presented together with alert text.
9	Acknowledged/Not rectified	Yellow-orange Presented together with alert text.
10	Active - responsibility transferred warning	Yellow-orange Presented together with alert text.
11	Not acknowledged/Rectified	Yellow-orange, flashing Presented together with alert text.
Alert priority: Caution		
12	Caution	Yellow Presented together with alert text.
Alert priority: Indication		
13	Indication	Yellow Presented together with alert text.
Other icons		
14	Acknowledge not allowed for alarm	Red. Presented together with icon number 2, 3 and 6.
15	Acknowledge not allowed for warning	Yellow-orange. Presented together with icon number 7, 8 and 11.

