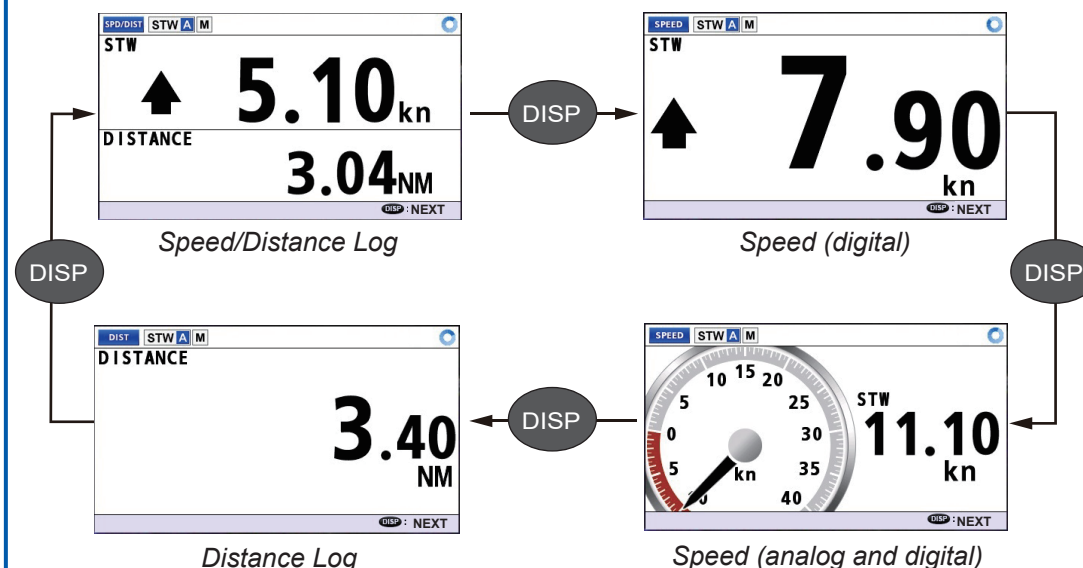




No.	Name	Function
①	BRILL	Shows the brilliance pop-up window.
②	DISP	<ul style="list-style-type: none"> Changes the display mode. Closes all active menu windows and returns to the last used display screen.
③	MENU/ESC	<u>Short press:</u> <ul style="list-style-type: none"> Opens/closes the main menu. Goes back to the main menu from a sub menu. Closes the settings window and cancels any changes. <u>Long press:</u> <ul style="list-style-type: none"> Shows the alert list.
④	POWER	<ul style="list-style-type: none"> Short press: Turns the power on. Long press: Turns the power off.
⑤	DAY/NT	Switches between Daytime display and Nighttime display.
⑥	ENT	<ul style="list-style-type: none"> Opens the menu for the highlighted item. Applies the settings/options selected.
⑦	CursorPad (◀, ▲, ▶, ▼)	<ul style="list-style-type: none"> Highlights a menu item/setting. ▲, ▼: Set numerical value in setting windows. ◀, ▶: Move cursor in setting window.

How to switch screens



How to switch screens

MENU
ESC
Long press

SPD/DIST	STW	A	M
LIST:2	LOG	<EXPORT>	STW *15.60kn
ALERT		TIME [UTC]	
! 0211003-1	System failure	11:23 15/NOV/2018	
! 0211006	Uncertain STW	10:33 15/NOV/2018	
Stop speed measurement for safety.			
! 0211003-1	System failure	MENU HOLD:LIST G	

Alert display

Speed/Distance log display

Display mode

SPD/DIST : Speed data and distance log.
SPEED : Speed mode
DIST : Distance log

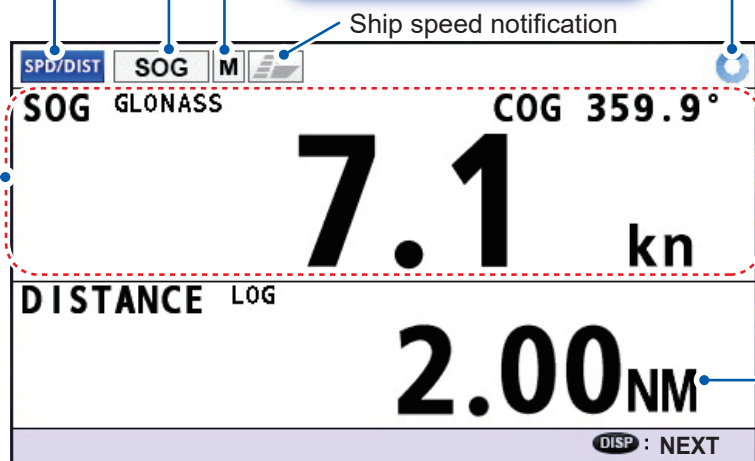
Speed measurement method

STW : Speed Through the Water (Doppler calculation).
SOG : Speed Over the Ground.
STW A : Speed Through the Water, automatic selection.
SOG A : Speed Over the Ground, automatic selection.

Display unit function

M : Main display
S : Sub display

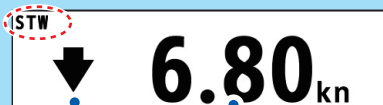
Operational status



Speed

STW

(Speed Through the Water)



Ship's Speed

Direction in which the vessel is moving



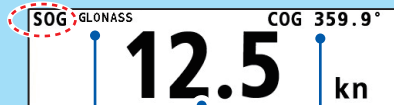
: Forward



: Reverse

SOG

(Speed Over the Ground)

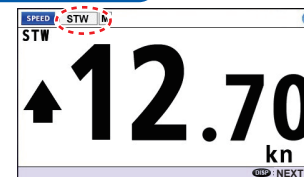


Ship's Speed

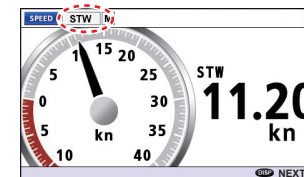
Geodetic System

Course Over the Ground

Speed display



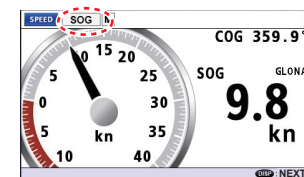
Digital speed display (STW)



Analog/Digital speed display (STW)

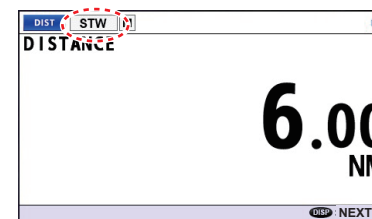


Digital speed display (SOG)

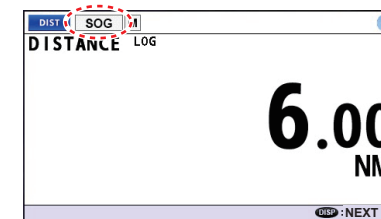


Analog/Digital speed display (SOG)

Distance log display



Distance indication (STW)



Distance indication (SOG)

Alert display

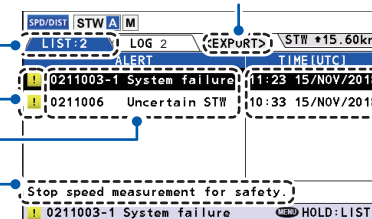
LIST tab, number of active alerts

Alert icon

Alert title

Alert message

Exports alert list and alert log (for serviceman use).



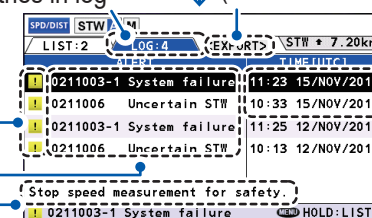
Time, date alert generated. Appears only when time, date are fed from an external navigation device. If there is no external data, "-" appears.

Use ◀, ▶ to switch between the alert log and alert list.

LOG tab, number of entries in log

Exports alert list and alert log (for serviceman use).

Press the DISP key to close the Alert display.



Time, date alert generated. Appears only when time, date are fed from an external navigation device. If there is no external data, "-" appears.