

NAVnet

TZ
touch

NAVnet

TZ2
touch

DFF3D

**Sensor information required
for Marks and Points**

The following tables illustrate which sensors are required for Point Registration, Go to Point, and Event Mark Registration for each type of sounder view of the DFF3D.

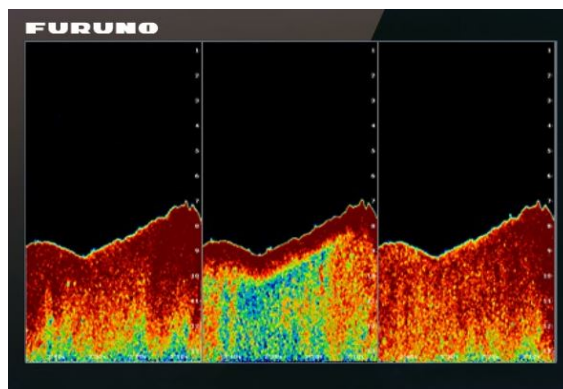
The Triple/Single Beam

Latitude/Longitude/Heading Data: Yes

Item	Starboard	Downward	Port
Point Registration	Yes	Yes	Yes
Go To Point	Yes	Yes	Yes
Event Mark Registration	Yes	Yes	Yes

Latitude/Longitude: Yes Heading Data: No

Item	Starboard	Downward	Port
Point Registration	No	Yes	No
Go To Point	No	Yes	No
Event Mark Registration	Yes	Yes	Yes



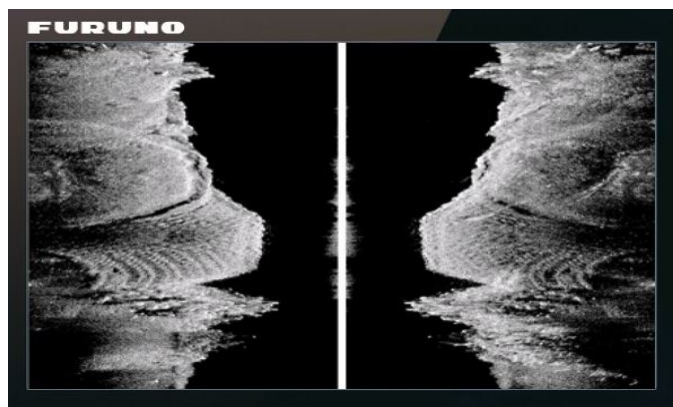
Side Scan View

Latitude/Longitude/Heading Data: Yes

Item	Starboard	Port
Point Registration	Yes	Yes
Go To Point	Yes	Yes
Event Mark Registration	Yes	Yes

Latitude/Longitude: Yes Heading Data: No

Item	Starboard	Port
Point Registration	No	No
Go To Point	No	No
Event Mark Registration	Yes	Yes



Cross Section View

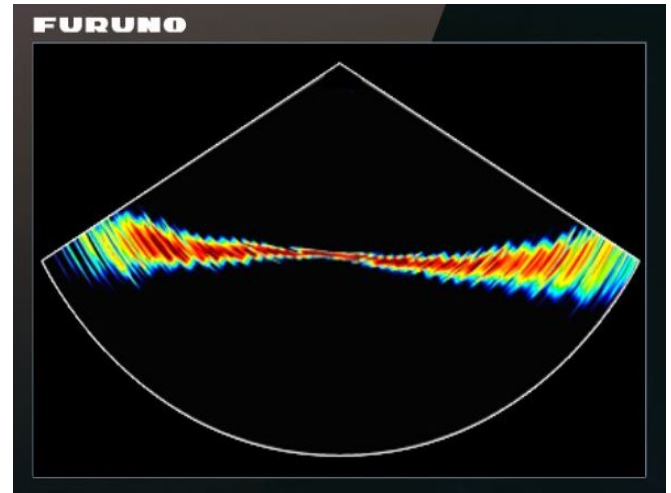
Latitude/Longitude/Heading Data: Yes

Item	Starboard	Port
Point Registration	Yes	Yes
Go To Point	Yes	Yes
Event Mark Registration	Yes	Yes

Latitude/Longitude: Yes

Heading Data: No

Item	Starboard	Port
Point Registration	No	No
Go To Point	No	No
Event Mark Registration	Yes	Yes



3D Sounder History View

Latitude/Longitude/Heading Data: Yes

Item	Starboard	Downward	Port
Point Registration	Yes	Yes	Yes
Go To Point	Yes	Yes	Yes
Event Mark Registration	Yes	Yes	Yes

Latitude/Longitude: Yes

Heading Data: No

Item	Starboard	Downward	Port
Point Registration	No	Yes	No
Go To Point	No	Yes	No
Event Mark Registration	Yes	Yes	Yes

