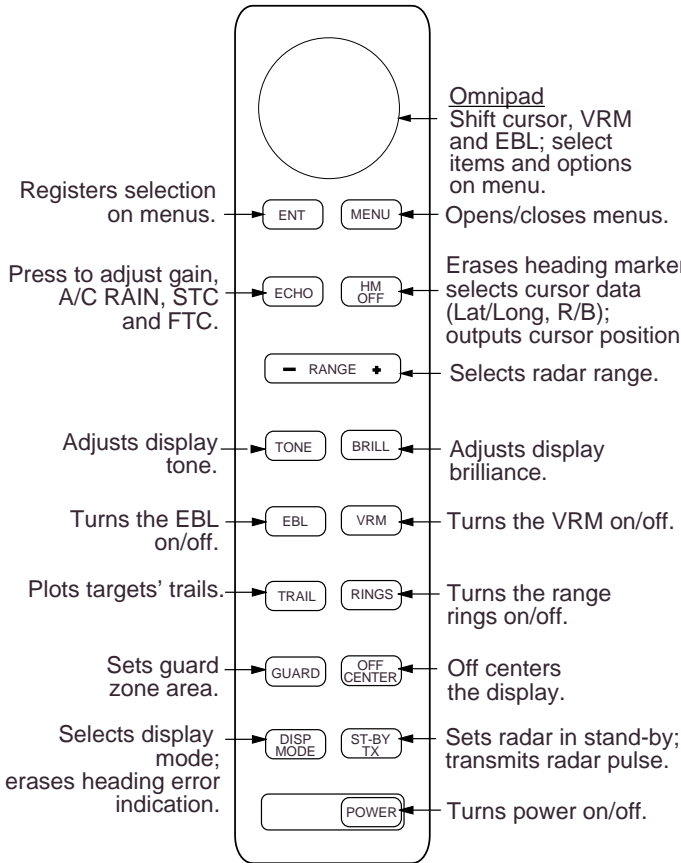


MODEL 851/861

Operator's Guide

The purpose of this manual is to provide the basic operating procedures for Model 851/861. For detailed information, refer to the operator's manual.



Control Panel

Power on/off

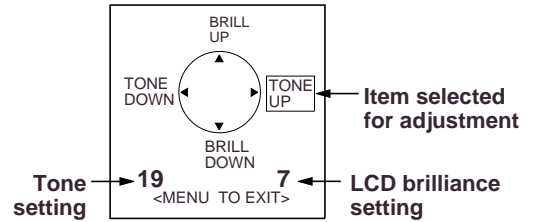
Press [POWER].

Transmitting/stand-by

Press [ST-BY TX].

LCD tone and brilliance

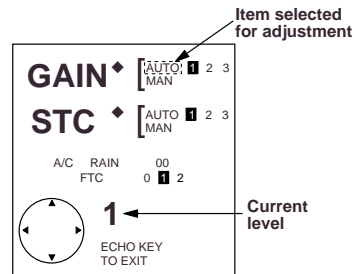
1. Press [TONE] or [BRILL].



2. Press [BRILL] (or [TONE] key) to set level. For fine adjustment, press omnipad at ▲/▼ for brilliance and ◀/▶ for tone.

Adjusting sensitivity

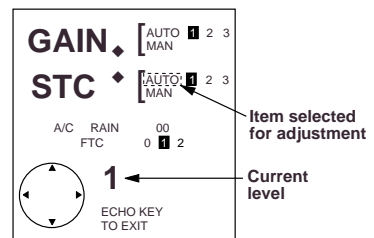
1. Press [ECHO] and select AUTO or MAN in GAIN.



2. Press [ENT].
3. Press the omnipad to set level.

Suppressing sea clutter

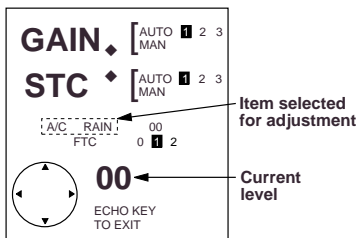
1. Press [ECHO] and select AUTO or MAN in STC.



2. Press [ENT].
3. Press the omnipad to set level.

Suppressing rain clutter

1. Press [ECHO] and select A/C RAIN or FTC.



2. Press [ENT].
3. Press the omnipad to set level.

Shifting the cursor

1. Press the omnipad.

Measuring range by VRM

1. Press [VRM].
2. Press the omnipad to place the VRM on the inside edge of the target.

Measuring bearing by EBL

1. Press [EBL].
2. Press the omnipad to bisect the target with EBL.

Showing/Hiding range rings

Press [RINGS].

Hiding the heading line

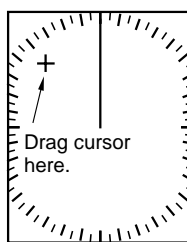
Press [HM OFF].

Echo trails on/off

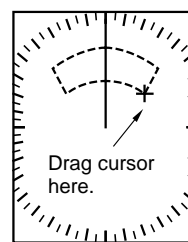
Press [TRAIL]. (Trail brilliance and trail time may be selected on the menu.)

Setting a guard zone

1. Place the cursor at the top left corner for the zone and press [GUARD].
2. Place the cursor at the bottom right corner for the zone and press [GUARD].



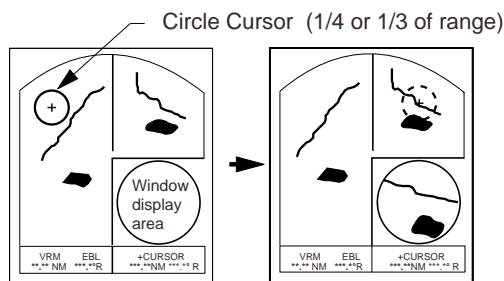
Step 1



Step 2

Zooming up target echoes

1. Press [MENU].
2. Select Zoom on Select Mode & Function menu.
3. Press [DISP MODE] to display the window.
4. Press the omnipad to place the circle cursor on the area to zoom.
5. Press [ENT] to register.



(1) Press [DISP MODE] to select the window display.

(2) Press omnipad to select area to zoom and press [ENT].

The window displays the entire radar picture on the next higher range by selecting "Wide" instead of "Zoom" on the menu.