



MaxSea 2D/3D PBG The ultimate weapon for sport fishing

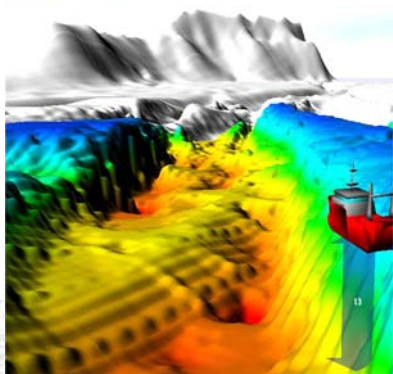
Top performance is not just a matter of chance, but the result of experience, dedicated work and preparation. Combine your expertise and ours with MaxSea 2D/3D PBG for sport fishing. The technology behind this powerful tool is driven from years of research and development in the commercial fishing industry.

State-of-the-art navigation with the best charts

MaxSea offers the most advanced navigation software available for sport fishing. Its ability to seamlessly display both raster and vector charts from many sources allows you to use the best charts available anywhere you are fishing. The ability to overlay **Sea Surface Temperature** and **ocean current** forecasts directly on to these charts with an incredibly accurate **3D display of the bottom contour and structures**, will minimize the time it takes to find where the big game fish are likely to be found feeding.



081



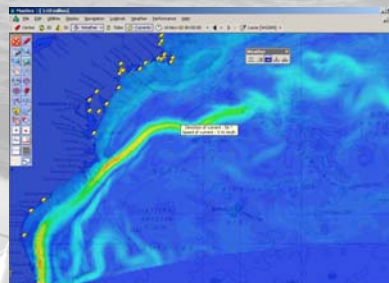
Accurate 3D View of Bottom Contour and Structures

With MaxSea's exclusive "**Personal Bathy Generator**" (PBG) technology, your 3D charts are continuously updated with data from your own depth sounder giving an incredibly accurate view of the bottom. You now be able to find previously unknown edges and structures where bait fish collect without wasting time guessing.

Sea Surface Temperature and Ocean Current Forecasts

MaxSea's easy to use "**Chopper**" allows you to download up-to-date Sea Surface Temperature and ocean current forecasts for any location on the globe via e-mail. Favorable temperature differentials and currents are clearly displayed in color on your chart and are accurately geo-referenced with the vessel's GPS.

This data is **FREE** and your air time is minimized by the Chopper's efficient compression algorithm which reduces the data request and receipt to a few seconds. In addition to Sea Surface Temperature and ocean current forecasts, other useful data to assist in your voyages include wind, waves and even the latest satellite altimetry data. These are all displayed in a clear and simple way to assist in navigation decisions en route to your next hunting grounds. MaxSea can also show what is referred to as a weather "movie" which simulates the weather in motion.



And more...

AIS/ARPA compatible - A big step forward for navigation safety, AIS (Automatic Identification System) and ARPA (Automatic Radar Plotting Aids) provide advanced collision avoidance capabilities.

Centralized console - for on-board electronics including GPS, water temperature sensor, sounder, etc., makes it easier to perform multiple tasks at the same time.

Chart compatibility - Raster (Mapmedia, ARCS, Maptech, BSB/NDI, Sofchart), Vector (S-57, C-Map 93, C-MapNT, DXF, etc.), gives you the option to select the best charts for your destination.

MaxSea - Navigate with Vision