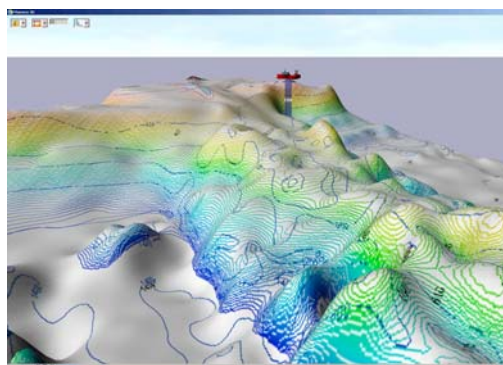




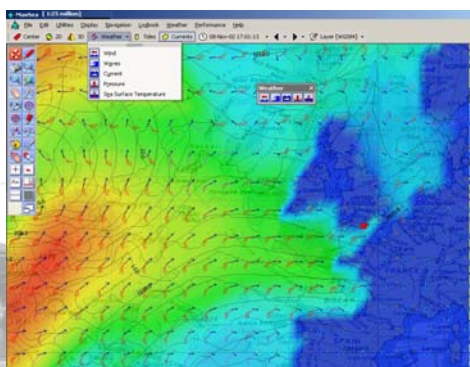
MaxSea Motor SuperYachts

Since 1985, MaxSea equips the most beautiful Yachts of the world.



▪ **The largest chart compatibility**
S57 compatible, MaxSea is compliant with ECDIS S52 specifications.

In addition, where official S57 charts are not available, MaxSea allows you to use the C-map CM93 vector charts, constituting the largest existing worldwide vectorial database. MaxSea reads the popular raster formats of ARCS from BHO and **Mapmedia** which now even offers a **high quality World Folio**. MaxSea also reads the BSB (USA), NDI (Canada), Seafarer (Australia) and Softchart formats.



▪ **A powerful weather overlay**

Weather forecast can be download from the Internet or **received daily by e-mail**. The forecast is displayed on the navigation chart, by easy to read indicators indicating wind direction and displaying wind speed, as well as other weather information (pressure, etc.). The indicators are colour-coded to alert the user for example of high winds, low winds and the ideal cruising and sailing conditions. Open the forecasts in MaxSea, integrate them in your route plan, launch simulations and animations... MaxSea's meteo enhances safety and comfort on board.

▪ **MaxSea 2D/3D**

This fantastic option can be added to your MaxSea SuperYacht /Seafarer version (Motor yachts only).

It allows you to display **any** navigation chart in **2D** (displaying detailed isolines) and in **3 Dimensions**.

▪ **And so much more ...**

- ✓ **easy route planning**, integrated calculation of ETA, tides, etc.
- ✓ **automatic scale change** programming
- ✓ **safety corridor** along the route
- ✓ **a full ARPA radar capability**, with TCPA/CPA and tracking
- ✓ **AIS transponders capability**
- ✓ **full radar overlay** (with specific hardware)
- ✓ **instantaneous current calculation** and display providing optimal analysis of the data of onboard equipment (GPS, Gyro, Log, etc.). MaxSea displays your vessel's course over ground, heading and drift.
- ✓ **a professional unlimited user information layer management**
- ✓ **optional 3D acquisition and display of bathymetric data with Personal Bathy Generator (PBG)**
- ✓ **Network capability**, etc.

▪ **A simple and user friendly interface**

The interface of MaxSea has been kept simple and as graphic as usual. MaxSea is still the most sophisticated and the most elegant navigation software.