

FURUNO®

MAXSEA

MARINE SOFTWARE



FURUNO U.S.A., INC.

4400 NW Pacific Rim Blvd., Camas, WA 98607 • Phone: (360) 834-9300 • Fax: (360) 834-9400 • www.Furuno.com

MaxSea Marine Navigation

Today's captains expect a lot from their navigation systems. MaxSea Navigation Software is the ideal system for captains and crews that demand the best. MaxSea is the only navigation platform that combines intelligent weather with superior raster and vector charting support, hallmarks of MaxSea's superior engineering and marine expertise.



Free NOAA raster charts for the entire U.S. included in every package!

MaxSea is a powerful navigation software program capable of blending and analyzing data from multiple sources in real-time. Features such as multi-screen support and full network compatibility make it, without a doubt, the most accurate and advanced on-board tool of its kind. MaxSea offers simple operation, increased productivity and the comfort of added confidence and safety.

MaxSea Navigator+

This entry-level system was specifically developed for the US market. You can connect your GPS and Autopilot, download/overlay free up-to-date weather and ocean conditions, and perform advanced planning. Begin using Navigator+ right out of the box with the 1,000+ planning charts that are included or use your favorite detailed charts from MapMedia, Maptech, Softcharts, NDI or C-Map NT+/MAX. You can save tracks and mark your favorite spots quickly. Not only does MaxSea provide free access to the most comprehensive weather data available, it gives you the ability to really use it! with one button click, wind, waves, sea surface temperature, tides, chlorophyll and 500 mb pressure analysis can be overlaid onto your nav chart for display while planning or underway.

MaxSea Commander

MaxSea Commander is powerful enough to satisfy the most demanding captain, yet intuitive enough to provide information for the entire crew. Plan your next trip in advance from the comfort of your own home, use it on board for real-time tracking and recording of your route, or add on additional modules to create your custom navigation package. With Commander you receive all the features of Navigator+, and you can also add on powerful modules such as 2D/3D chart viewing, Mobiles and MaxShell. *Also available as NavNet-Commander.*

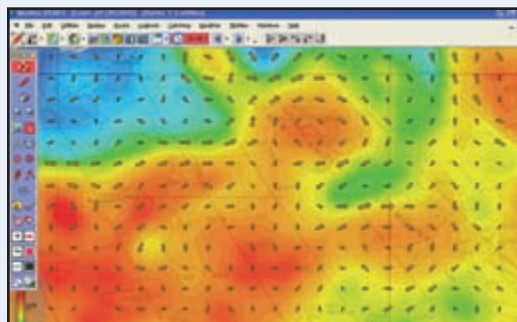
MaxSea Explorer

Wrap up everything in the Navigator+ and Commander, add 2D/3D chart viewing and even update your charts with Explorer with PBG (Personal Bathymetric Generator). As an added feature, you will receive MaxShell or add the Ground Discrimination module, which allows you to see the shape of the ocean floor in great detail. Determine if it consists of gravel, sand, silt, etc., allowing you to quickly identify the type of ground you are over. *Also available as NavNet-Explorer.*

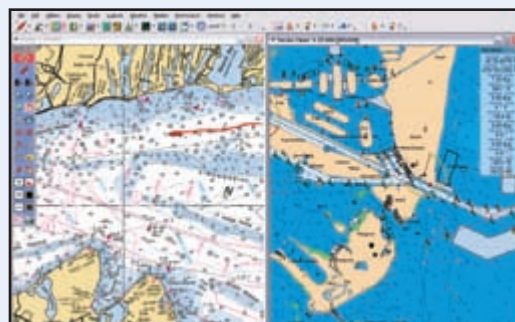
MaxSea Professional

The absolute top of the line in PC Navigation - that's the concept behind MaxSea Professional. Made specifically to meet the needs of commercial fisherman and workboat operations, it is a combination of all the MaxSea packages, including 2D/3D, PBG and more. Professional comes standard with the Performance*, Routing*, Mobiles and Ground Discrimination modules. You also get the added benefit of the Trawl Position and Fleet Tracking module, which allows you to show the actual position & shape of your trawl and track ships. (Third party hardware/software may be required for proper operation). *Also available as NavNet-Professional.*

**Free upon request*

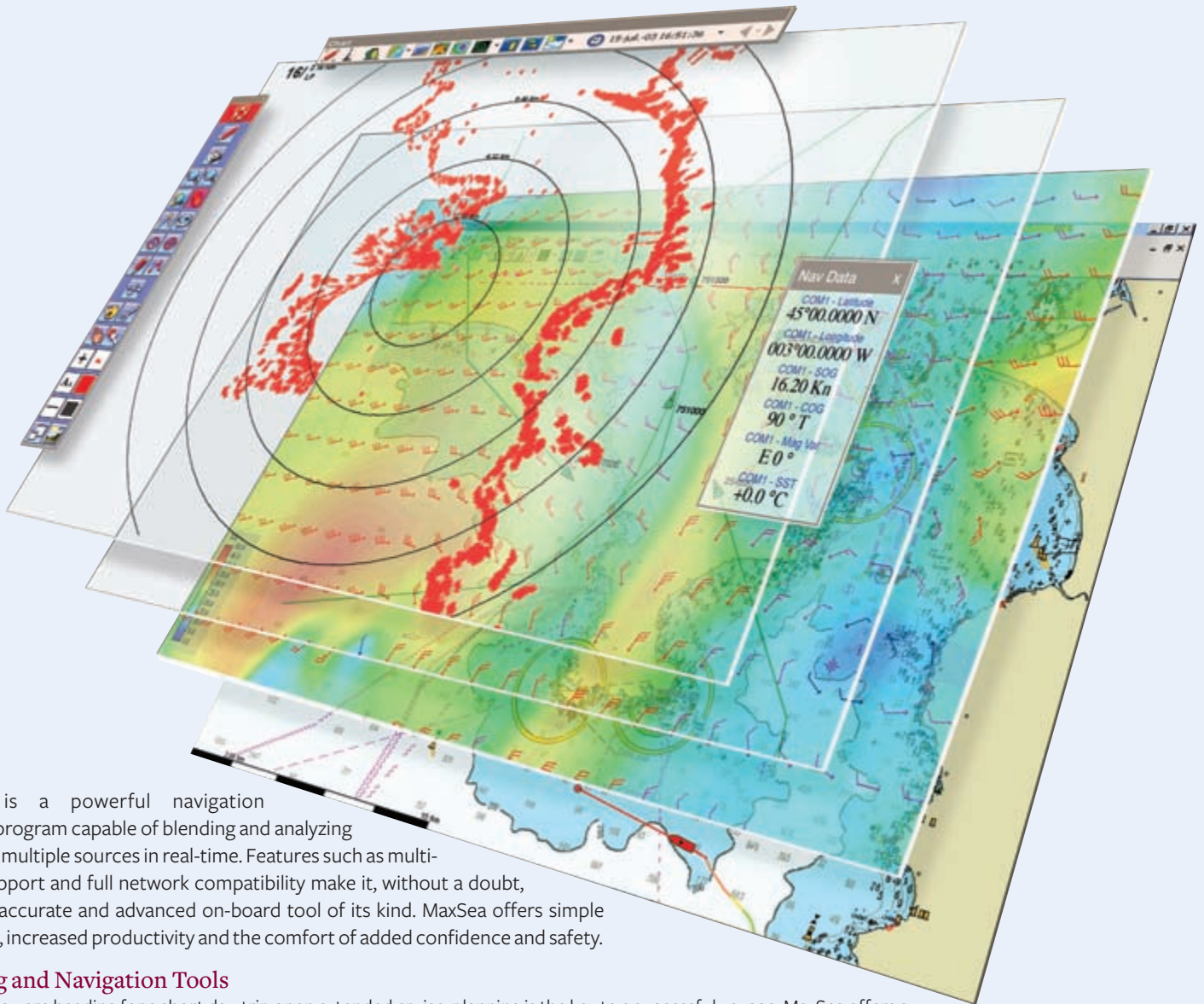


FREE ocean and weather forecasts can be displayed on the chart as a valuable route plotting aid. Wind, waves, pressure, sea surface temperature (SST) and chlorophyll data is available anytime via compressed Email.



Display both raster and vector charts on the screen simultaneously to get all the information that is available for where you are navigating.

State-of-the-art Marine Software that is easy to use!



MaxSea is a powerful navigation software program capable of blending and analyzing data from multiple sources in real-time. Features such as multi-screen support and full network compatibility make it, without a doubt, the most accurate and advanced on-board tool of its kind. MaxSea offers simple operation, increased productivity and the comfort of added confidence and safety.

Planning and Navigation Tools

Whether you are heading for a short day-trip or an extended cruise, planning is the key to a successful voyage. MaxSea offers a variety of planning and navigational tools that are packed with features, while remaining easy to use.

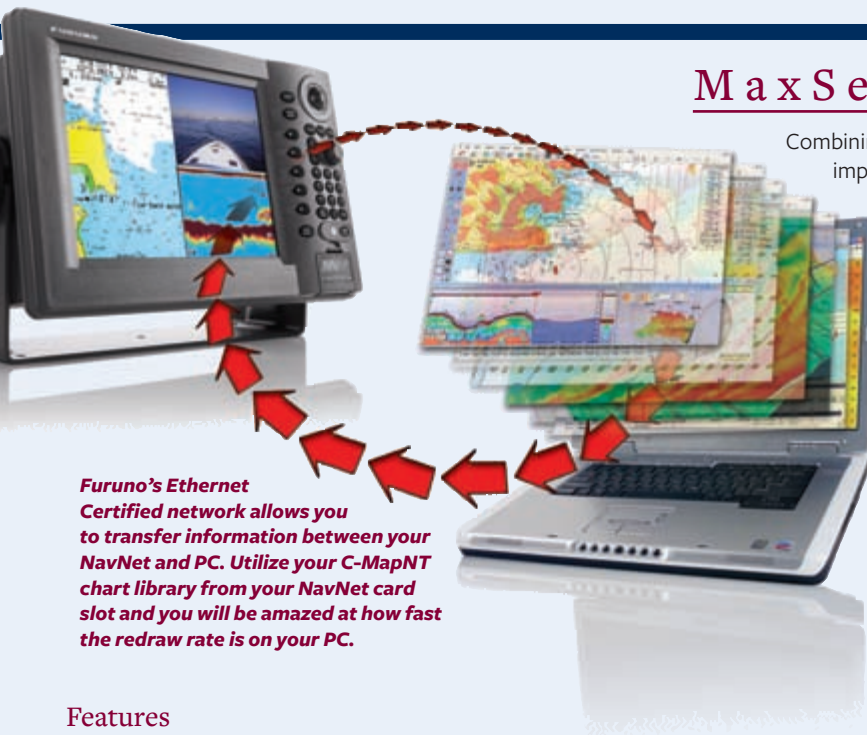
- Tidal height, speed & direction data
- Unlimited waypoints & routes
- ETA & Time to go calculator
- Track recording color using input data
- Navigation logbook
- Day, dusk and night color palettes
- Overlay FREE up-to-date ocean conditions & weather forecasts
- Multiple inputs for GPS, wind sensors, nav equipment, etc.
- North Up/Course Up/Head Up chart orientation
- Unlimited simultaneous user data layer access
- Compatible with multiple monitors
- Full multi-user network capabilities

Unique Overlay System

The unique overlay system in MaxSea optimizes data from both the core MaxSea software and NavNet sensors when you are using the MaxSea-NavNet Software. Using the multiple overlay system, various layers of information can be superimposed on the screen. Each overlay can contain different types of data, such as: tracks, marks, hazards, wrecks, pots, currents, water temperature, Radar targets, depth sounder data, and more. Based on your needs at the moment, a single click can make each layer either visible or invisible — eliminating irrelevant information and clearly showing only the data you require.

MaxSea Marine NavNet

Since 1985, MaxSea Marine Navigation Software has been the world's favorite PC based electronic charting program. Now, Furuno has partnered with MaxSea to produce MaxSea-NavNet, the most powerful navigation system available! Whether you are in need of stand-alone PC charting or want to integrate it with your NavNet system, we have the perfect solution!



Furuno's Ethernet Certified network allows you to transfer information between your NavNet and PC. Utilize your C-MapNT chart library from your NavNet card slot and you will be amazed at how fast the redraw rate is on your PC.

MaxSea-NavNet

Combining NavNet information with MaxSea's charting capabilities creates a dramatic improvement in accuracy & clarity and gives you an amazingly detailed image.

With MaxSea-NavNet, you get all of the features of MaxSea software, plus the added bonus of being able to interface it with your NavNet system to gather data from all of the network sensors. Get GPS/WAAS positioning, Fish Finder or Depth Sounder data, Radar targets and even utilize your current C-MapNT chart card data directly from NavNet's high-speed Ethernet network.

MaxSea-NavNet comes in three versions, NavNet-Commander, NavNet-Explorer and NavNet-Professional. Each version includes all of the features in their MaxSea counterparts, but they also allow you to take full control of your NavNet display, such as radar range, gain, sea clutter control and more. Plan your routes and waypoints in advance on your PC and transfer them easily to your NavNet. Other capabilities such as ARPA Radar and AIS target tracking can be monitored by NavNet-Commander when optional equipment is installed or interfaced to your NavNet system.

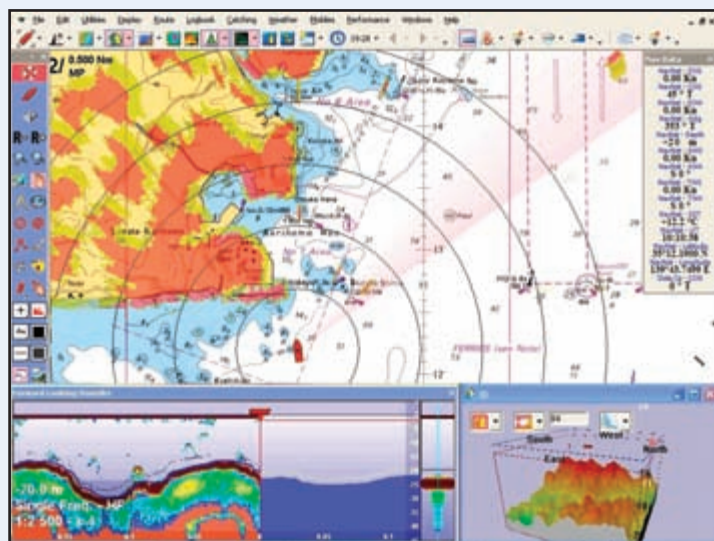
Features

- ▶ Compatible with NavNet vx2 and NavNet1
- ▶ NavNet Data Exchange - Waypoints, Routes, Time, L/L, SOG, COG
- ▶ Overlay radar targets onto chart (requires heading sensor)
- ▶ Utilize C-MapNT and/or MAX charts from NavNet to PC via Ethernet network
- ▶ Seamless electronic chart navigation and plotting using raster, vector and 3D Bathymetric charts
- ▶ Display fish finder data from Network Sounder
- ▶ Forward Looking Depth Profile (FLDP)*
- ▶ Simultaneous 2D and 3D electronic chart viewing*
- ▶ Continuously update 3D chart data utilizing Personal Bathymetric Generator (PBG) and Network Sounder**
- ▶ Optional Mobiles Module allows you to display ARPA, AIS and fish buoys when optional equipment is installed†

*Standard with NavNet-Explorer and optional for NavNet-Commander

**Standard with NavNet-Explorer and not available for NavNet-Commander

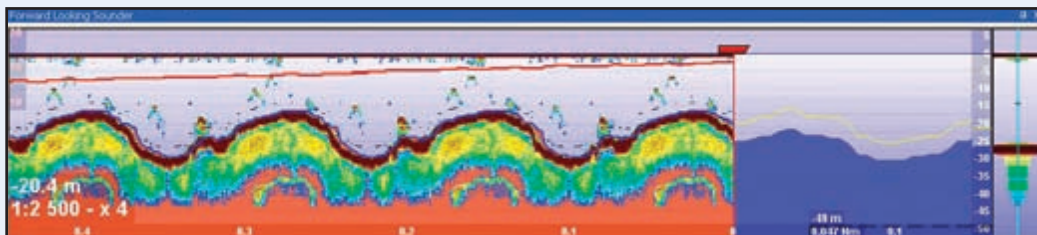
†AIS targets requires an AIS receiver to be connected



With MaxSea-NavNet you can bring NavNet network information directly onto your PC. This split screen display shows radar targets being overlaid onto a chart, a Forward Looking Depth Profile and a 3D presentation of the seabed.

The Forward Looking Depth Profile utilizes the NavNet Network Sounder to compare real-time sounder returns to known bathymetric data forward of your vessel. This effectively allows the captain to see the bottom ahead of the boat to avoid shallow water.

When the PBG module is active in Explorer, you can monitor real-time updating of bathymetric data in a 2D perspective.



MaxSea NavNet-Commander

Take the most powerful chart plotting software available and combine it with the most advanced electronics package on the market, and what you get is NavNet-Commander! NavNet-Commander integrates seamlessly with Furuno's NavNet system via NavNet's Ethernet connection. Now you can bring all of the valuable information from your NavNet unit such as Radar Overlay, echo sounder, Chart data (C-Map only)*, weather fax and more directly to your PC! With Commander you receive all the features of Navigator+, and you can also add on powerful modules such as 2D/3D chart viewing, Mobiles and MaxShell.

MaxSea NavNet-Explorer

MaxSea NavNet-Explorer takes the very best of the popular MaxSea NavNet-Commander package and bundles it with the powerful 2D/3D and Personal Bathymetric Generator modules. Also included is MaxShell, our exclusive Windows Desktop Management software, which provides security for your vital programs while MaxSea is running. You also have the option of adding the Ground Discrimination module, which allows you to see the shape of the ocean floor in great detail. Determine if it consists of gravel, sand, silt, etc., allowing you to quickly identify the type of ground you are over.

MaxSea NavNet-Professional

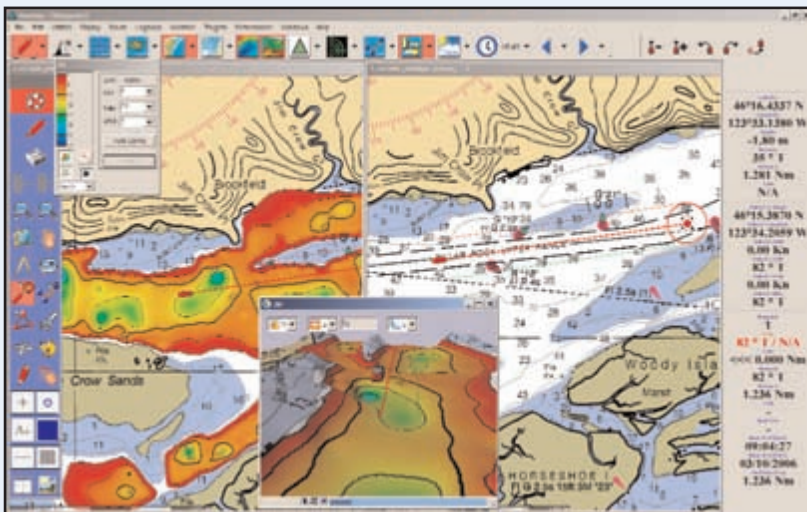
Simply put, you get it all with MaxSea NavNet-Professional - every feature offered in any MaxSea NavNet product including AIS and ARPA target tracking, routing* and performance* modules, 2D/3D displays, Personal Bathymetric Generator and Ground Discrimination Module, as well as NavNet interface capability. MaxSea NavNet Professional has it all. Made specifically to meet the needs of commercial fisherman and workboat operations, you also get the added benefit of the Trawl Position and Fleet Tracking module, which allows you to show the actual position & shape of your trawl and track ships. (Third party hardware/software may be required for proper operation).

*Free upon request

Combine any MaxSea software package with a NavNet Black Box system and you will have the most powerful navigation network available, with your choice of screen size! Whether you select a super-bright 15", 17" or 21" display or utilize your own marine monitor, you are sure to have the networked navigational system of your dreams.



MaxSea's Mobiles Module allows Commander and Explorer to display ARPA (Automatic Radar Plotting Aids), AIS (Automatic Identification System) targets and fish buoy tracking. When connected to a system that is equipped with ARPA or AIS, you will be able to display their targets with a vector for each course overlaid on your screen.



With MaxSea's exclusive 2D/3D PBG (Personal Bathymetric Generator), your charts are continuously updated with data from your own depth sounder, giving an incredibly accurate view of the bottom. You can now find previously unknown pinnacles and obstacles where bait fish collect without wasting time guessing.

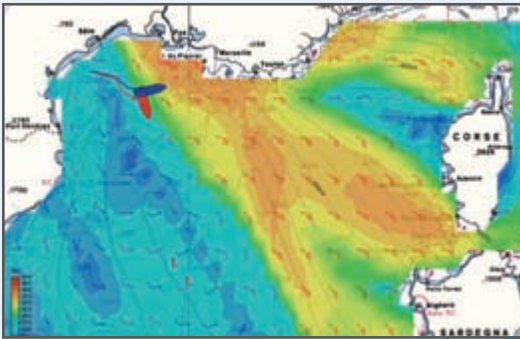


With Professional's 2D/3D Trawl Position, you can display information about your position on a data palette, and show the actual position and shape of your trawl in both 2D and 3D displays. Trawl position info can be captured in your logbook automatically for a detailed record. You can also save a track of your trawl and analyze it along with ship's track for a detailed analysis of your fishing tactics.

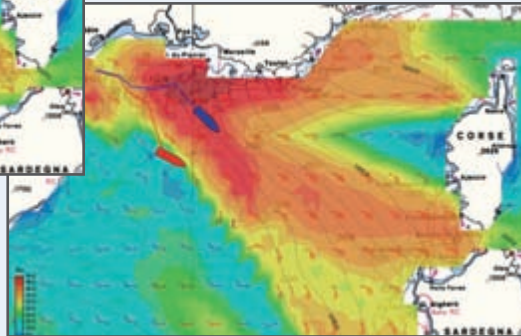
MaxSea makes navigating in inclement weather a breeze with the Weather Routing Module, the most advanced on-board weather routing system available. MaxSea uses weather forecasts and the performance characteristics of your individual boat to calculate the fastest way to reach your destination, or the safest and most comfortable route - you choose!

MaxSea Weather Routing in action:

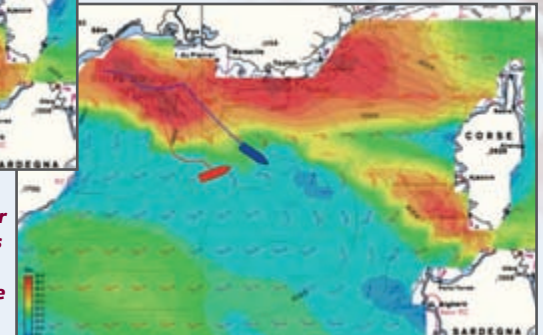
On Thursday morning, two identical boats leave Cap d'Agde, heading for Ajaccio. On the Sea Breeze (red boat), a family of four is out for a pleasure cruise. On the Speedy (blue boat), we have an experienced crew of racers, out for a bit of sport. The weather is fine with calm seas and the wind blowing a steady 7 knots along the coast. However, after downloading the latest weather updates our sailors can see that the forecast calls for over 40 knot winds expected in certain areas. On the Sea Breeze, there's no question that they want to avoid those winds - the software works out a route for them that will steer clear of the windy areas and make sure that everyone stays safe, comfortable and happy. The crew of the Speedy, however, want to get to Corsica as quickly as possible. The software will calculate the best route for both vessels, one tailored for maximum performance, the other for maximum safety.



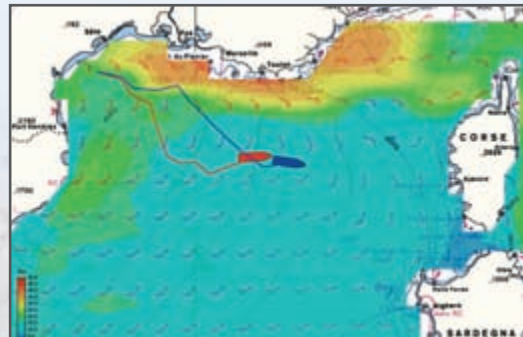
Thursday, 13:00:
The routes divide. Speedy heads east towards the depression, while Sea Breeze heads south and calmly runs alongside it.



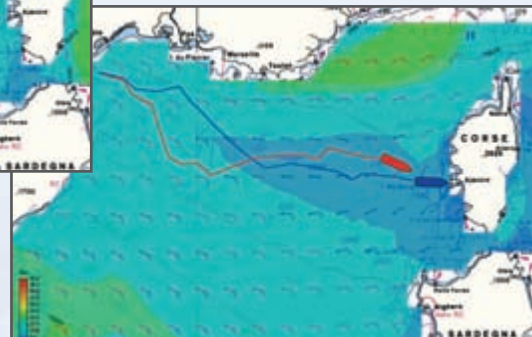
Thursday, 20:00:
With over 40 knots of wind, Speedy is shaken for several hours - nothing too serious, as the winds won't last, but it's challenging. Meanwhile, Sea Breeze, runs alongside the depression where the wind velocity never exceeds 20 knots.



Friday, 00:00:
The heavy weather is over. Speedy is well ahead. Sea Breeze continues to run alongside the front.



Friday, 05:00:
The wind has died down, and the two yachts follow a direct route.



Saturday, 23:00:
Speedy arrives in port on Saturday at 23:00. Sea Breeze arrives 4.5 hours later. One has voluntarily coped with strong winds, while the other has avoided them entirely.

Add-on Modules

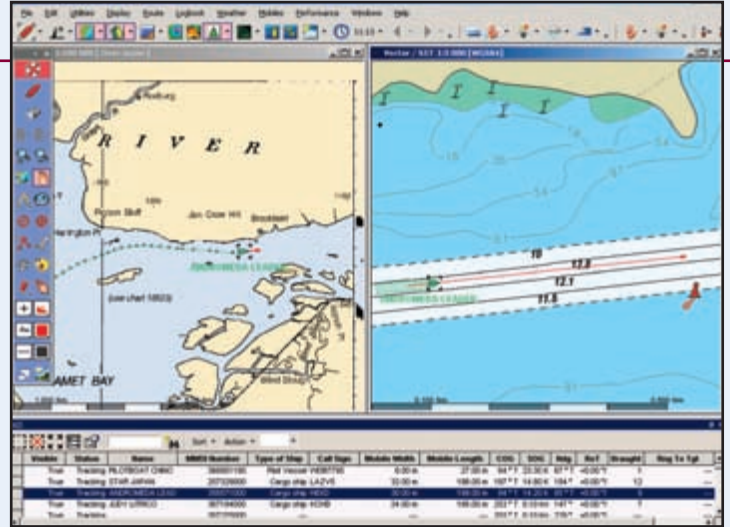
The true power of MaxSea Commander and Explorer is their flexibility to be customized. With specific add-on modules you will be able to build a software package that meets your specific needs and budget.

Mobiles Module (Available for Commander and Explorer)

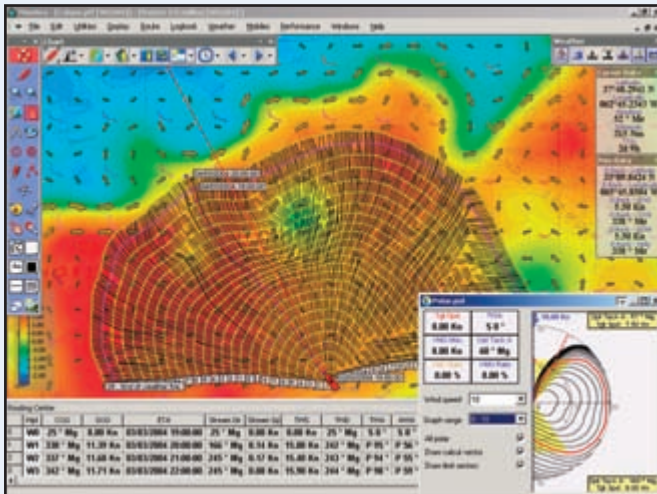
The Mobiles Module allows Commander and Explorer to display ARPA (Automatic Radar Plotting Aids), AIS (Automatic Identification System) targets and fish buoy tracking. When connected to a system that is equipped with ARPA or AIS, you will be able to display their targets with a vector for each course overlaid on your navigation screen. MaxSea interfaces with all ECDIS and NMEA compliant serial connections and pilot ports.

2D/3D Module (Optional for Commander, Standard with Explorer and Professional)

The 2D/3D Module has the ability to seamlessly display in 3D both raster and vector charts from many sources. The ability to overlay sea surface temperature and ocean current forecasts directly on to these charts with an accurate 3D display of the bottom minimizes the time it takes to find where the big game fish are likely to be feeding.



When MaxSea or MaxSea-NavNet is connected to an AIS receiver, you will be able to track multiple AIS targets to gather information on each vessel. Use your PC keyboard as an MKD to send an AIS message to other AIS equipped vessels.



The Weather Routing Module is not only for racing applications, but also aids cruising sailors in navigating safely by avoiding strong winds.

Weather Routing Module

(Optional for Commander and Explorer, Standard with Professional)

The Routing Module is the most advanced on-board weather routing system available. Since 1986, every winner of the Volvo Around the World/Whitbread, BOC and Vendee Globe Races, has used this powerful tool to help them win. MaxSea uses weather forecasts and the performance characteristics of your individual boat to calculate the fastest way to reach your destination.

Sailing Performance Module (Optional for Commander and Explorer)

The Performance Module adds powerful tools for sailing vessels, including upwind and downwind laylines displayed on the chart (continuously corrected for changes in true wind direction and current), and advanced manipulation of performance data. It not only gives you the information you need for optimal sailing, but also the ability to accurately predict upcoming conditions based on the analysis and identification of trends in wind speed, wind direction and barometric pressure.

Ground Discrimination Module (Optional for Explorer, Standard for Professional)

Along with seeing the shape of the ocean floor in great detail, MaxSea can also show you what it consists of: gravel, sand, silt, etc. giving you comprehensive bottom discrimination and seabed classification when connected to a third party ground discrimination unit. Built-in presets allow you to quickly identify the type of ground you are over, plus you can configure MaxSea for custom seabed classifications depending on the species you are fishing. (Requires 3rd party hardware)

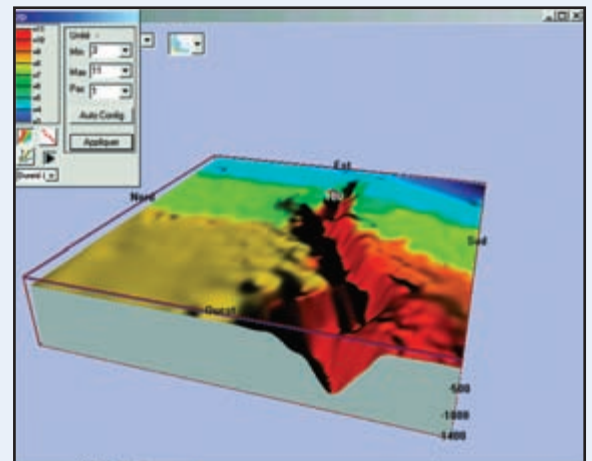
MaxShell Module (Optional for Commander, Standard with Explorer and Professional)

MaxShell delivers the awesome power of MaxSea PC-based navigation wrapped in plotter-like simplicity, by insulating you from the unfriendly eccentricities of the Windows operating system. MaxShell insures simplicity, reliability, automatic backup and security.

PBG (Personal Bathymetric Generator)

(Standard with Explorer and Professional)

With MaxSea Explorer's exclusive PBG (Personal Bathymetric Generator), your 3D charts are continuously updated with data from your own depth sounder, giving an incredibly accurate view of the bottom. You can now find previously unknown pinnacles and obstacles where bait fish collect without wasting time guessing.



With the Ground Discrimination Module, you can head for your favorite spot and assign a color to match the exact bottom type you are searching for, telling you when to drop your fishing gear.

The Tool Palette

The graphical tool palette makes the software even more user-friendly. The palette can be customized. Use large or small buttons, display all functions or only those essential to navigation, fishing, or the specific task at hand. Even configure the tool palette to suit your specific needs:

- According to onboard conditions (number of crew, sea conditions, state of emergency, etc.)
- According to your skill level, personal preference and comfort zone

Activation Buttons

- Man Over Board
- Tracking On/Off
- PBG On/Off
- Radar Range In / Radar Range Out
- Tracking On/Off
- Zoom Out

Navigation Tools

- Change chart scale
- Pan charts and access chart data
- Calculate headings, distances and EBL/VRM
- Create waypoint
- Go To
- Create routes
- Insert a waypoint or a point in a line
- Cut a line or track in two parts

Selection & Modification Tools

- Remove information
- Select and move an object, point or waypoint
- Select & display info about a specific object

Plotting Object Definition

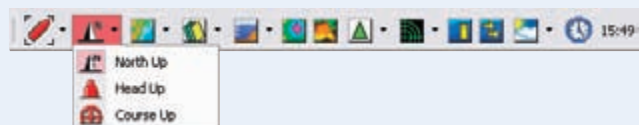
- Choose plotting symbol
- Choose plotting object type
- Choose plotting font size
- Choose plotting color
- Choose plotting line width
- Choose plotting pattern

Additional Display Options

- Day, night, dusk display
- Chart desktop mode

The Chart Palette

A few clicks is all it takes to display the chart in North Up/Course Up modes and to call up tide, current, weather, radar and depth profile.



MaxSea Commander, Explorer & Professional Features

Standard Features	Commander	Explorer	Professional
Waypoints/Routes/Autopilot exchange	•	•	•
Seamless electronic chart navigation/plotting	•	•	•
Simultaneous 2 dimensional (2D) and 3 dimensional (3D) electronic chart viewing and manipulation	optional	•	•
Personal Bathymetric Generator (PBG) Update 3D in real time	n/a	•	•
Ground Discrimination Software module (requires 3rd party hardware - SeaScan/RoxAnn)	n/a	optional	•
Advanced unlimited simultaneous user data layer access	•	•	•
Loran TD display	•	•	•
Track recording	•	•	•
Advanced event recording	•	•	•
Worldwide Tidal Data (tidal height)	•	•	•
Navigation Logbook Software module	•	•	•
Weather Overlay Software module	•	•	•
Mobiles module (ARPA, AIS, GPS Buoys) & AIS Minimum Keyboard Display (MKD)	optional	optional	•
MaxShell Windows Desktop Manager	optional	•	•
Worldwide Electronic Planning Chart	•	•	•
2D/3D Trawl Position and Fleet Tracking	n/a	n/a	•

NavNet-Commander, -Explorer & -Professional Features

Standard Features	Commander	Explorer	Professional
NavNet data exchange (Time, L/L, SOG, COG, etc.)	•	•	•
Radar Overlay	•	•	•
Fish finder echoes	•	•	•
Forward Looking Depth Profile	optional	•	•

System Requirements

Your PC must meet the following system requirements in order to work with MaxSea and MaxSea-NavNet. Please verify these requirements before installing.

- Windows 2000 SP4 or XP* (*not for use with Media Center or XP 64 Bit Edition)
- Pentium M = 1GHz Processor (Pentium 4 = 2.8GHz recommended)
- CD-ROM drive - for installing software and charts
- Serial or USB port(s) - for connecting navigation equipment (An adapter must be used for USB connection - non-NavNet version only)
- Parallel or USB port for hardware key
- 700 MB of hard drive space for software (up to 5 GB for charts)
- Graphic card:128MB - Compatible with DirectX9c
- Ethernet 10/100 Base-T connection
- Memory requirements

Operating	System Memory
Windows® 2000	256 MB (512 MB Recommended)
Windows® XP	512 MB (1024 MB Recommended)

- Note about system requirements:
For the best performance we advise you to follow the "recommended" guidelines. MaxSea and MaxSea-NavNet are advanced software programs which make good use of faster computers with more memory.