



# MaxSea, the essential tool for lobster fishing

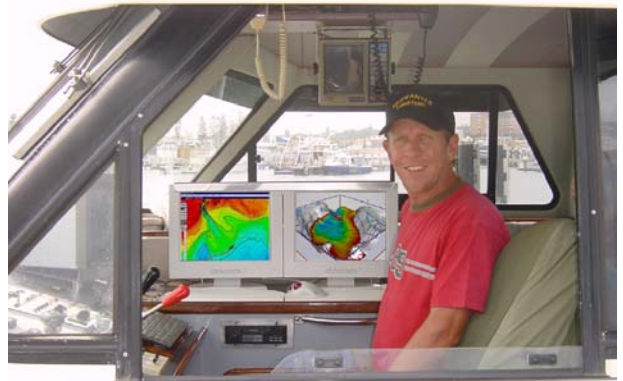
"As any lobsterman knows, as more areas are closed and the season is shortened, you have less and less room for error. In today's day and age, you can't afford to work below your maximum potential even for a minute. It is therefore more important than ever to have powerful tools that will allow you to maximize your efficiency. MaxSea is designed with this in mind, and will help you optimize your fishing efforts saving you both time and money.



Miraculous catch with MaxSea

- **2D/ 3D imaging of the bottom will help you maximize your profits!**

MaxSea 2D/ 3D makes it possible to view the seabed with amazing detail. Instantly, you can see the depths as well as the bathymetric make-up of the bottom. By tying into your depth-echo sounder, you can then utilize PBG (personal bathymetric generator) to make corrections to your existing bathymetric charts with precision down to 1.5 meters. This will allow you to make real-time decisions based upon what the bottom looks like at that exact moment!! Today, the average PBG user has increased their profit margin by 30% (money saved on fuel as well as larger earnings from increased catch)!



PBG: a revolution...

- **Coupled with Sea Scan, MaxSea shows the make-up of the seabed**

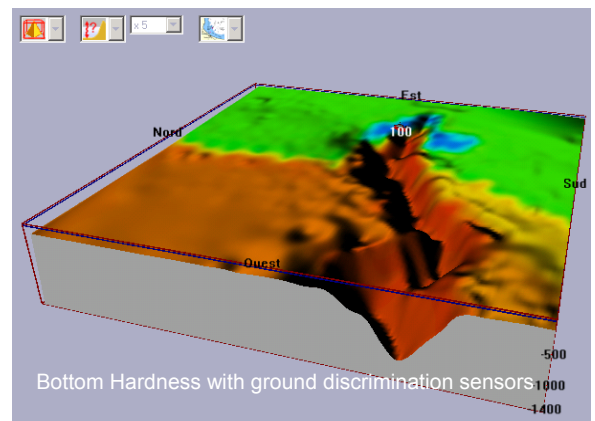
With Sea Scan connected to your sounder and MaxSea, you will be able to determine, roughness and hardness of the bottom, as well as classify the bottom according to type (rock, sand, mud, etc.) The data that you collect can be displayed in both 2D and 3D and can be an invaluable tool for lobstermen and fishermen alike.

- **Precise data recording**

MaxSea has a maximum resolution of 1.5 M by 1.5 M meaning that you will develop an extremely accurate picture of the bottom and thus be able to very accurately know the position of your traps. MaxSea has an "Events" function which will allow you to place a mark on the chart when your trap is dropped in the water with a single key strike. This series of marks can then be converted to a series of waypoints and the autopilot function can then easily follow this active course. This will allow you to minimize searching for traps and thus save fuel and time.

- **An easy to use, decision making tool.**

Thanks to its advanced functions, MaxSea provides you with the most accurate and up to date information for your fishing grounds. MaxSea's flexibility on chart formats (raster or vector), versatility of host computers (laptops, desktop, marine computer, etc.), and user friendly platform make it the smart choice over any plotter out there. With MaxSea on board, you will not only return more quickly to port saving time and money, but you will also be able to beat the competition in and get the best price for your lobsters!!



Developed by Informatique & Mer S.A. since 1985, MaxSea is today the uncontested world leader of the navigation software.