

Iceradar FICE-100

Find the best route
through ice!

Observe
ice conditions
by radar

Hybrid ice radar



FURUNO FINLAND OY

Increase safety

Visualizes ice structures. Discovers the optimum route to go through ice.

Shows the track in bad visibility.

Usable ice detection up to 4 NM.

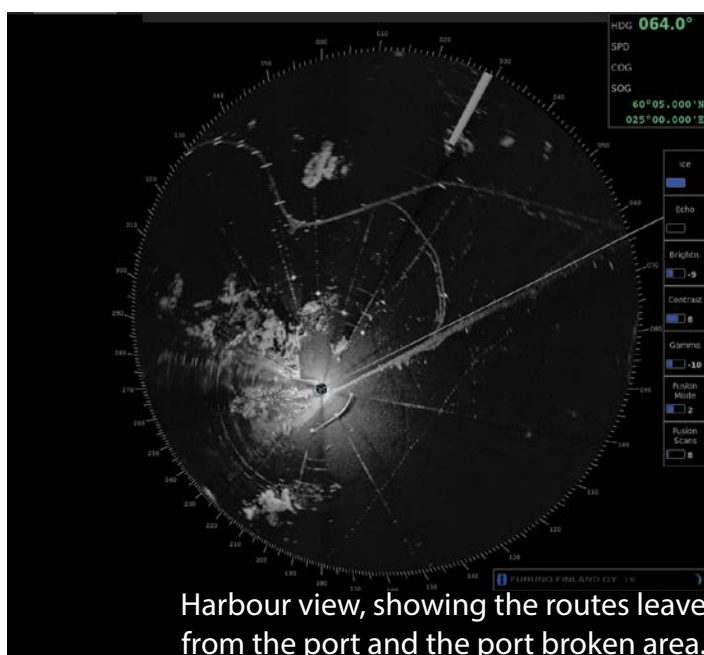
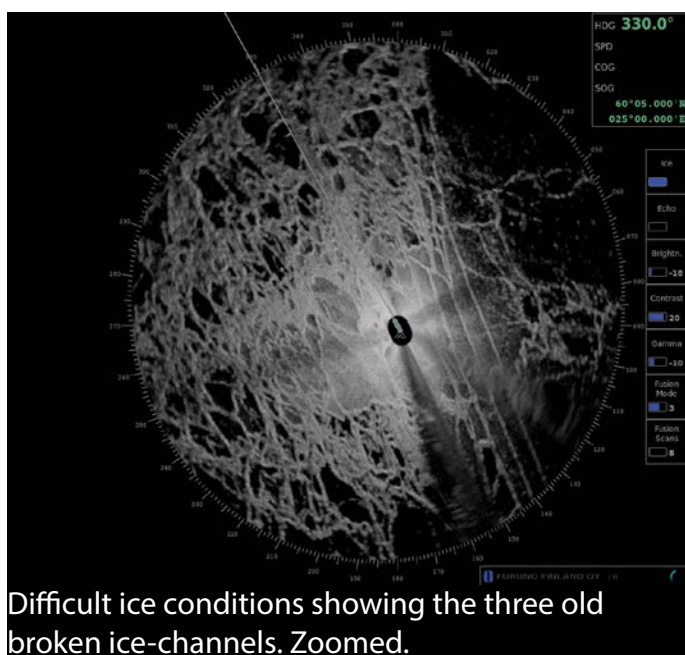
Improves stability of the ice picture compared to the radar.

Ice radar displays the ice conditions

The FICE-100 removes the image noise and the fine structures of the ice will become more visible. Hybrid ice radar captures the raw radar signal from the ARPA processor.

The result is a stable image that includes the fine details found in the radar echos.

It is a supplementary system for the specific task of observing ice conditions by radar.



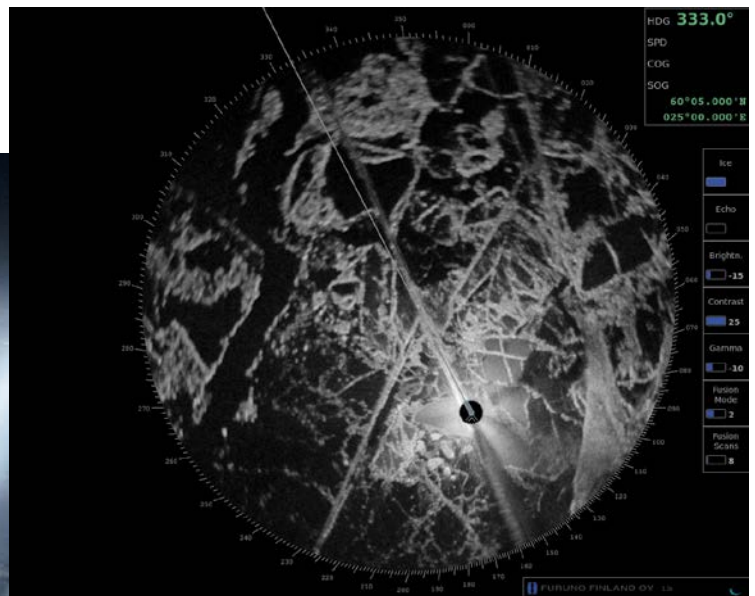
Use less power

Vessels can find the old rifts, clean ice and channels done by icebreakers and other vessels.

The vessel uses much less power and saves fuel and time!

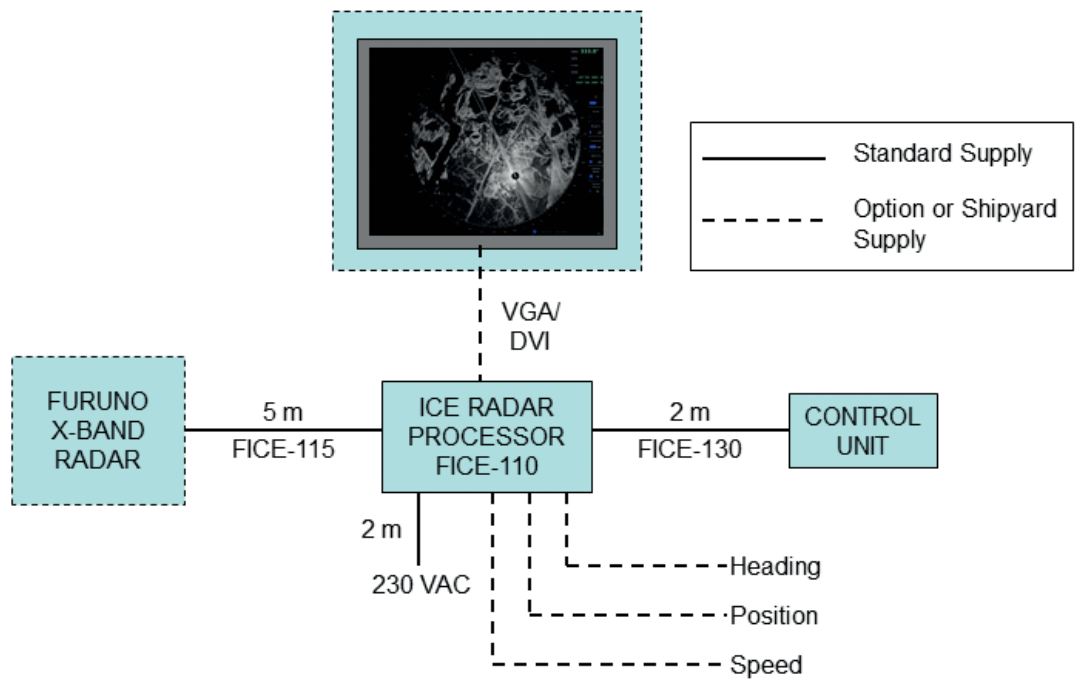
Enhanced functionalities: FICE-100 is an alternative to IR camera.

FICE-100 can also display official ENC chart material. Chart can be overlaid with ice radar picture.



A clear broken ice-channel in the direction of 333.0

Interconnection diagram



SPECIFICATIONS		EQUIPMENT LIST	
General	Ice radar processor - marine rack computer	Standard	1. FICE-110 Ice radar processor
	Power supply 100 - 230 VAC		2. FICE-115 5 m Ice radar cable
	Trackball control unit		3. FICE-130 2 m Control unit cable
	High resolution high bandwidth digitizer		4. Standard spare parts and installation materials
	Ice radar display outputs DVI and VGA		
Input signals	Radar signals	Option	1. Ice radar display w. cable (Specify when ordering)
	- radar video and trigger		
	- azimuth and heading line signals		
	- standard cable length is 5 meters		
	Heading, position and speed		

Your Furuno contact: