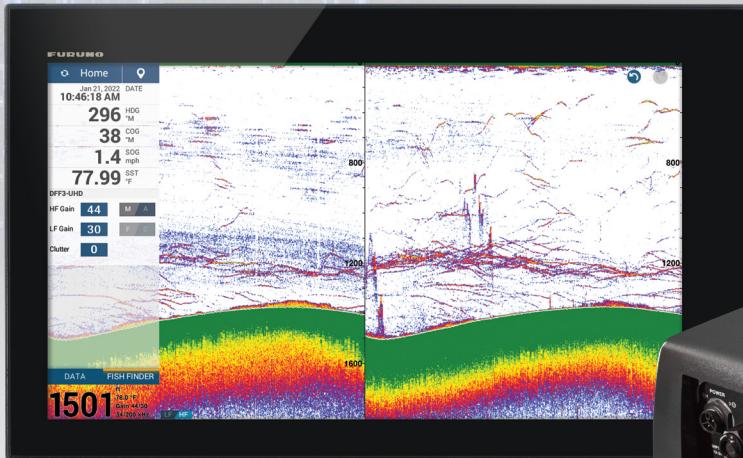




UNLEASHED: HIGH POWER 2kW/3kW TruEcho CHIRP™ NETWORK FISH FINDER

The **DFF3-UHD** High Power TruEcho CHIRP™ Fish Finder for NavNet TZtouch3 delivers the ability to see fish and bottom structure deeper and clearer than ever before. Furuno's superior digital signal processing interprets echoes from fish and underwater structures with unparalleled clarity, accuracy, and resolution, at unprecedented depths - we're talking maximum depth scales down to 15,000 feet!

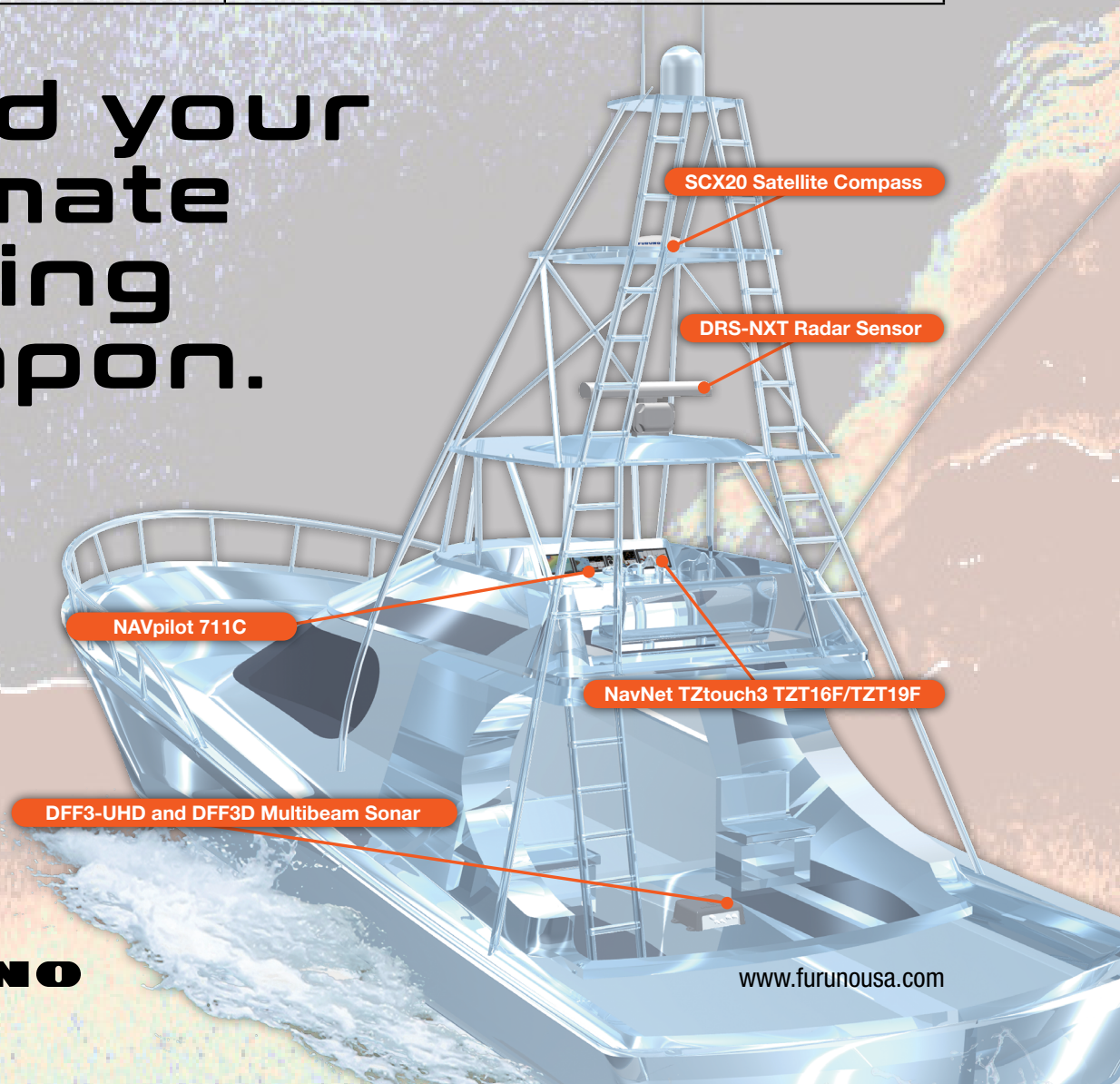


- 2 kW or 3 kW Power Output
- Transmits across Low, Medium, and High CHIRP frequency ranges
- High Power = greater resolution and depth capability at all ranges
- Compatible with NavNet TZtouch3 as well as NavNet TZtouch2 TZT2BB Black Box MFD
- Gathers more expansive and higher-quality data than comparable tone pulse Fish Finders
- Find and catch more of your target species, game fish and baitfish, even when they're tightly schooled or near the seafloor
- A-Scope feature and programmable Fish, Depth, or Temp Alarms
- Enhanced automatic cruising or fishing modes to suit your style of boating

DFF3-UHD High Power TruEcho CHIRP™ Fish Finder

TX Type	Dual Band CHIRP and CW
Output Power	CHIRP: Max. 3 kW CW: 2/3 kW
Max. Range Scale	4572 m 15,000 ft
Frequency	25 to 242 kHz
BT-5 for 5/10 kHz CW Transducer	Compatible
Interconnection	Connect to MFD Network via Ethernet
Networked MFDs	NavNet TZtouch3 (v3+ software) NavNet TZT2BB (v9+ software)
Power Supply	12-24 VDC
Power Consumption	3.0-1.6 A
Protection Level	IP55
Dimensions	380 x 120 x 299 mm 15 x 4.72 x 11.78 in
Weight	3.6 kg. 7.94 lbs.

Build your ultimate fishing weapon.



FURUNO

www.furunousa.com