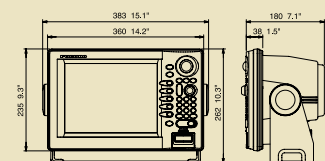


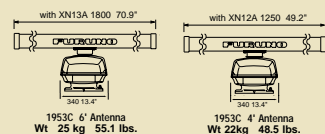
FURUNO NAVNET 1953C

- 1953C — 72 n.m. 12kW, 4' open array antenna, 1.85' horizontal beam width *
- 1953C — 72 n.m. 12kW, 6' open array antenna, 1.2' horizontal beam width *
- Head-Up, Course-Up, True Motion, Course-up True Motion and North-Up modes
- Over 50 different display modes to choose from when connected with optional GPS receiver ant. and Network Sounder
- Automatic gain, tuning and sea-clutter controls easily clear up radar images on the screen
- Dual EBL (Electronic Bearing Lines) and dual EVRM (Electronic Variable Range Markers) give distance and compass bearing to target
- Six customizable "Hot Pages" allows you to create the display views you use the most
- Versatile display modes including: Course Plot, Alphanumeric Nav Data, Steering and 3-D Highway modes
- Overlay Radar targets on top of the Chart (appropriate heading sensor required)
- True color Radar shows 6 levels of color density on targets for better tracking of weather
- Watchman and Guard Zone Feature help alert you to potential danger
- Optional external video input/output
- Optional BBGPS 12 channel GPS or DGPS receiver
- Optional BBFF1 Network Sounder with 600W or 1kW output power
- ARP11 auto plotter option provides automatic target plotting for up to 10 targets
- Store up to 8,000 points for ship's track and marks, 1,000 waypoints and 200 planned routes

FURUNO 1953C DISPLAY DIMENSIONS



Wt 6.0 kg 13.2 lbs.



1953C 6' Antenna
Wt 25 kg 55.1 lbs.

1953C 4' Antenna
Wt 22kg 48.5 lbs.



Now with twice the power - 12kW **10.4" COLOR LCD RADAR**

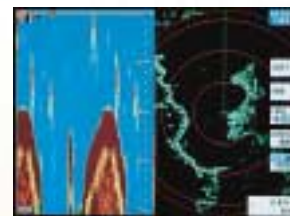
When it comes to desirable features, user interface and screen definition, the Furuno 1953C & 1953C/NT are the cream of the crop. These rugged, waterproof units offer professional features that meet the needs of serious mariners.

This Radar/Chart Plotter has a sunlight viewable 10.4" color LCD display and is engineered around a powerful X-Band transmitter that cuts through all types of weather. In fact, because this is a TRUE color Radar that shows 6 levels of target density, you can use this Radar to track storms. The Chart Plotter is a full function plotter with a variety of display modes to view. You also can choose between two units that accept either Furuno and Navionics® or C-Map/NT mini-chart cards.

Like other members of the NavNet family, this Radar/Chart Plotter can be used as a stand-alone system or as part of an Ethernet network with multiple displays. You can also opt for the optional video input and output.



Using the optional #008-523-070 video interface kit, you can show external video on the 1953C in full screen or picture in picture.



There are more than 50 different display modes to choose from when all of the components are connected to NavNet.



www.Furuno.com

* Requires Power Supply Unit PSU-005