

B258

1kW
Dual Frequency



Fathomable fish-finding.

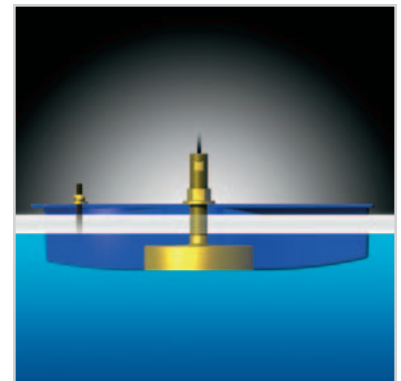
The Clear Choice

This new 1 kW transducer makes 600 W fishfinders perform like their more powerful big brothers—especially at 50 kHz. The B258 is 25 times more sensitive than a single element 50/200 kHz transducer. How does it do it? The B258 uses Airmar's new and unique ceramic-element construction. The resulting narrow beams will clearly distinguish individual fish and bottom fish from their habitat at up to 2,200 feet.

Streamlined Performance

Maximize performance by installing the B258 with our custom fit high-performance fairing. At speeds over 30 knots, screen displays show clear images and a clean bottom trace.

- Supersedes B256 transducer, with significant increase in performance at 50 kHz.
- Recommended for sport fishing boats above 26' (8m) and small to mid size commercial fishing boats.
- Includes temperature sensor
- Transducer ID option

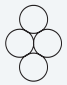


B258

1kW
Dual Frequency

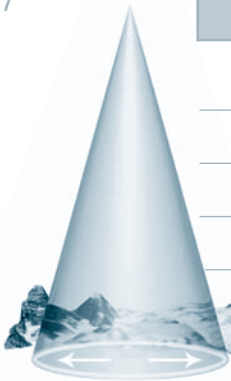
Technical Information

Specifications

Frequencies:	Number of Elements & Configuration	Beam Width: (@-3dB)	Rated RMS Power: (W)	TVR:	RVR:
50/200kHz-B1q		15°x21°	1kW	161dB	-174dB
		3°x5°	1kW	173dB	-183dB

Weight:	3.6 kg (7.9 lb.)		50kHz	200kHz
Hull Deadrise Angle:	Up to 25° with fairing	FOM:	-17	-9
		Q:	9	15

Size of Viewable Area Based on Depth



Depth	50kHz	200kHz
100'	25' x 40'	5' x 9'
400'	98' x 163'	20' x 35'
800'	197' x 325'	42' x 70'
1,000'	245' x 407'	52' x 87'

Comparison Chart

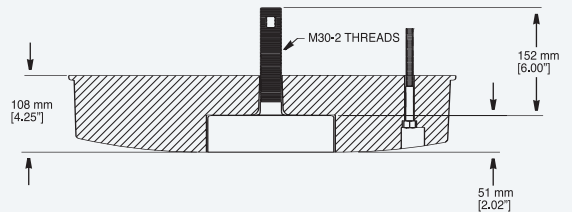
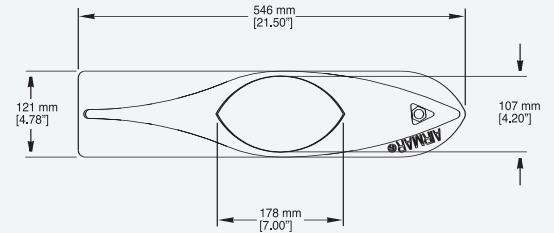


The chart compares a dual frequency single element 600W transducer to the higher performance transducer models.

Model	Power	Rating	Performance Increase
B744V	600W	Good	Benchmark model for comparison
B258	1kW	Better	25 times more sensitive at 50kHz 16 times more sensitive at 200kHz
B260	1kW	Best	50 times more sensitive at 50kHz 13 times more sensitive at 200kHz
R99	2kW	Superb	200 times more sensitive at 50kHz 32 times more sensitive at 200kHz

Dimensions

B258 transducer with High Performance fairing



Performance



Depth Range

50/200kHz	
441m – 647m 1500' – 2200'	206m – 294m 700' – 1000'