

Contact: Jeff Kauzlaric, Furuno Advertising & Communications Dept.
 Phone: (360) 834-9300 Fax: (360) 834-9400
 Email: JeffK@Furuno.com

FURUNO'S NEW RD33 DATA ORGANIZER MAKES DISPLAYING NMEA2000 NAV DATA EASIER THAN EVER BEFORE

Camas, WA – October 28, 2010. As the NMEA2000 protocol becomes more prevalent in new installations, it has become apparent that a new “standard” in an NMEA2000 data repeater was necessary. Furuno has stepped up to the plate with a redesign of their extremely popular, award winning RD30 Nav Data Organizer. The new RD33 takes the advanced features of the RD30, adds more new data pages and wraps it all up in a compact, waterproof unit that features a 4.3” color LCD display.



The RD33 features a visually appealing fresh new look to cosmetically match Furuno's NavNet 3D displays. The unit combines a user-friendly set of buttons along with a bright, high-resolution color LCD. Because of its high resolution (480 x 272), you can display numerical and graphical data in easy-to-read formats that you can see from a distance. You can customize the format of the screen from a full-screen that shows large numbers to a 6-way split screen presentation.

The RD33 accepts a wide variety of navigational data from the NMEA2000 backbone of your vessel and displays them in either a numerical or graphical format. You can display information such as:

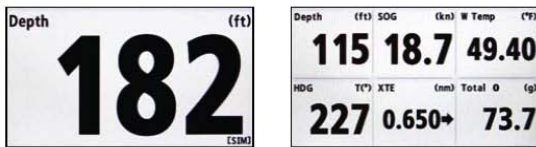
<p>Data To Be Displayed</p> <p>Depth Depth</p> <p>Speed Speed Through Water, Maximum /Average Speed Through Water, Speed Over Ground, Maximum/Average Speed Over Ground, Velocity Made Good, Trip, Odometer</p> <p>Timer Stopwatch, Timer</p> <p>Wind Wind Speed, Maximum True Wind Speed, Wind Angle, Low Apparent Wind Angle, High Apparent Wind Angle, Beaufort Wind, Ground Wind</p>	<p>Heading Heading, Heading Average, Locked Heading, Next Tack, Course Over Ground, Course Made Good, Distance Made Good, Rate Of Turn</p> <p>Navigation Bearing, Locked Bearing, Range to Destination, Cross Track Error, Waypoint No., Waypoint Name, Position, Course Over Ground, Speed Over Ground, Satellites, Roll/Pitch, Roll, Pitch, Destination, Estimated Time of Arrival, Time, ETA Date, Time Difference, Laylines</p> <p>Environment Voltage, Time, Date, Water Temperature, Air Temperature, Air Pressure, Humidity, Wind Chill, Dew Point</p>	<p>Autopilot Rudder Angle</p> <p>Engine Fuel Information, Fuel Rate, Engine RPM, Engine Trim, Boost, Engine Temperature, Engine Hours, Oil Press, Oil Temperature, Coolant, Engine Load</p> <p>Fishery Current Speed, Current Direction</p>
---	---	---

Page 2 – Furuno’s RD33 NMEA2000 Nav Data Repeater

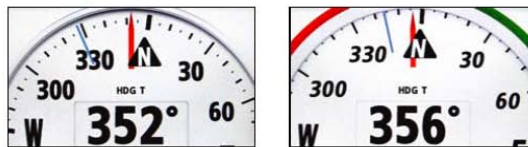
In addition to being able to plug the RD33 into an existing NMEA2000 network, it can also be a stand-alone precision depth gauge by simply connecting one of Furuno’s NMEA2000 Smart Sensors to it. The Smart Sensor operates at 235kHz to provide solid performance at high speeds, shallow depths and even in turbulent water all while displaying precise depth in water as shallow as 2 feet and temperature to 0.02 degrees Fahrenheit. This frequency will not interfere with most other Fish Finders, especially those running at 200kHz. The RD33 also features various alarm settings for the following parameters: Temp (accurate to .01 degrees), Depth, Speed, Arrival, Anchor, XTE, Trip, Odometer, Timer and Countdown Timer. The RD33 also functions as a unique, bi-directional protocol converter between NMEA2000 and NMEA0183. Use the RD33 to display and convert existing NMEA0183 GPS, Navigation, Wind, and Depth Sensors over the NMEA2000 protocol, saving hundreds or even thousands of dollars in retrofit costs. It also has the capability to convert Loran TD’s to Lat/Lon.

The most noticeable improvement to the RD33 is its high-contrast, color 4.3” display. This compact, sunlight viewable unit displays your navigational data like never before seen! You can customize your screen or use pre-configured screens as shown below:

NAV data



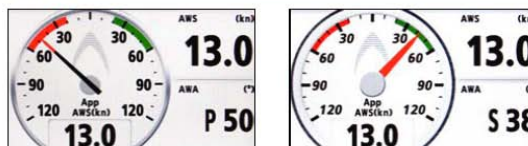
Heading



SOG



Wind



Roll & Pitch



Rate of Turn



You can have a virtually unlimited number of RD33’s networked together, so you can conveniently mount a RD33 wherever you need one. For the money, you will be hard pressed to find a more valuable piece of electronics than the RD33 for your boat. For more information on Furuno’s RD33, contact: Furuno U.S.A., 4400 N.W. Pacific Rim Blvd., Camas, WA 98607. Phone: (360) 834-9300.

www.FurunoUSA.com.