

Contact: Jeff Kauzlaric, Furuno Advertising & Communications Dept.
Phone: (360) 834-9300 Fax: (360) 834-9400
Email: JeffK@Furuno.com

Furuno Introduces New Stand-Alone Radar The 1835/19x5 Color LCD Radar Series

Camas, WA – October 29, 2009. While Furuno is celebrating its 34th consecutive "Best Radar" award from the National Marine Electronics Association (NMEA), they're certainly not resting on their laurels. Furuno continues to work hard on what customers are asking for with the development of new and innovative products. The latest example is their all-new 1835/19x5 Color LCD Radar series.



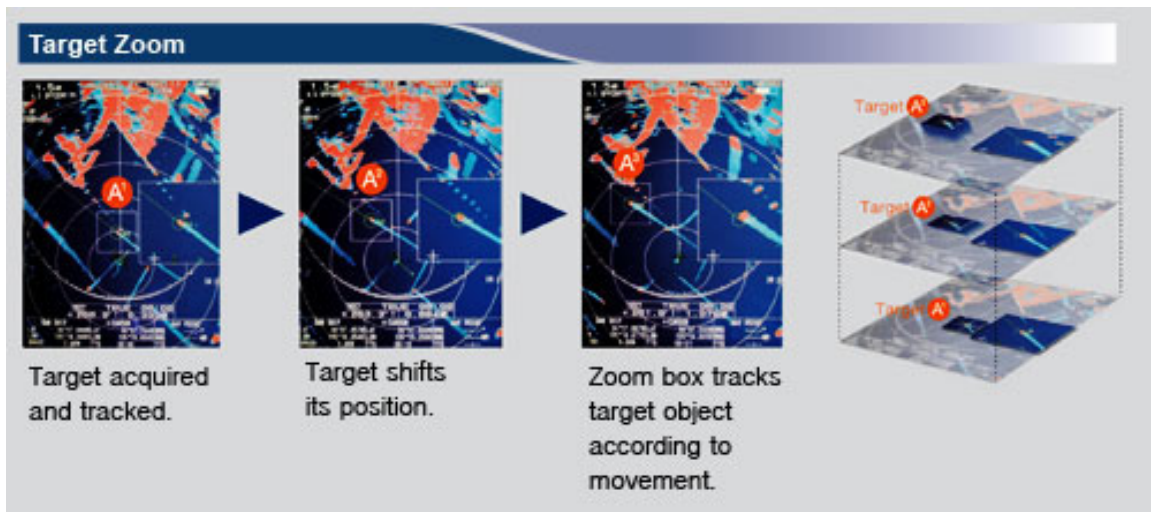
For over 10 years, recreational and commercial customers alike have grown to appreciate and rely on the unparalleled performance and reliability of Furuno's renowned series of 10" CRT Radars (1832, 1932MK2, 1942MK2). While Multi-Function displays seem to take the majority of ink in the press today, demand has been rising for a stand-alone Radar series of similar size and power, paired with a brighter, high resolution, color LCD display. Even though Multi-Function products offer this type of display, there is still a large contingent of vessel operators that desire the simplicity and dedicated functionality of a stand-alone Radar.

The crisp, new 10.4" Color LCD Display tops a list of great new features found in this latest series of Radars. Furuno's unique "True View" is a new display mode based on the head-up mode with a sophisticated smoothing effect added. It

Page 2 – Furuno’s 1835/19x5 Stand-Alone Color LCD Radar

eliminates any delay in picture update when you make a quick turn. The radar image is smoothly rotated and follows quick heading changes even between the sweeps. In the True View mode, there is no time lag between the radar image and what’s happening on the water around the boat. You also get enhanced auto tuning, gain and anti-clutter control with a dedicated rotary knob for straightforward operation.

As with many of Furuno’s new Radars, the 1835/19x5 series comes standard with the ability to display up to 100 simultaneous AIS targets when an optional AIS receiver is connected. Add on the optional ARP11 and you will enable the Radars 10 target ARPA (Automatic Radar Plotting Aid). A target can be shown in a zoom display while its detailed movements are tracked by AIS or ARPA. A conventional zoom function is available as well. These Radars also feature true color targets, and utilize different colors according to the target strengths. This is extremely helpful in discriminating target echoes from clutter.



The 1835 comes standard with a 4 kW, 24” Radome, the 1935 comes with a 4 kW, 3.5’ Open Array and the 1945 comes with a 6 kW, 4’ Open Array. They have the capability of displaying from 1/8 N.M. to 36 N.M., 48 N.M. and 64 N.M.

-- more --

Page 3 – Furuno’s 1835/19x5 Stand-Alone Color LCD Radar

respectively. Cosmetically, they have a “Family Look” matched to the Furuno FCV295 Fish Finder and as mentioned earlier, they feature easy to use knobs and buttons. The displays are IP55 Waterproof, so they can be used in either an enclosed bridge or an open helm station.

For customers who have the older 1832/19x2MK2 Radars, there will be the future ability to retrofit and upgrade to the new displays. When it comes to building a Radar that you can depend on in every weather condition, Furuno’s commercial grade construction is one you can trust. When you install a new 1835/19x5 Radar on your vessel, you might just be installing the 35th consecutive “Best Radar” from Furuno!

For more information on 1835/19x5 Radar Series or Furuno’s full line of award winning marine electronics, contact: Furuno U.S.A., 4400 N.W. Pacific Rim Blvd., Camas, WA 98607. Phone: (360) 834-9300. Fax: (360) 834-9400. Online boaters can also check out Furuno U.S.A.’s Internet Web site (www.FurunoUSA.com).

###