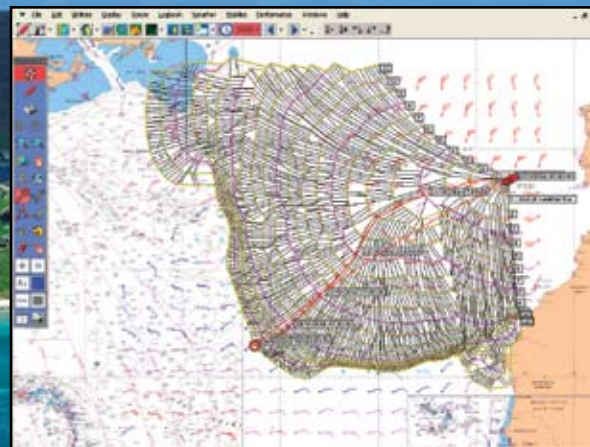


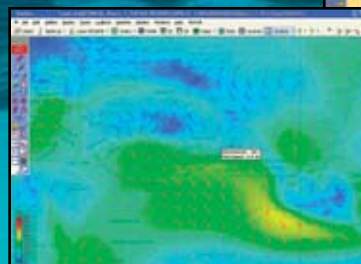
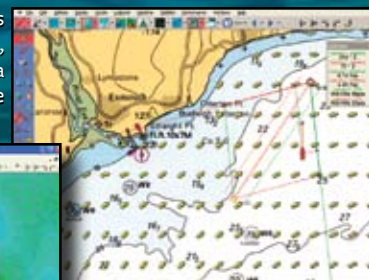
# MAXSEA

MARINE SOFTWARE



The Weather Routing Module aids in navigating safely by avoiding strong winds. For more weather routing capabilities, add the Sail Performance module which can automatically create polar tables for you as you sail.

Free ocean and weather forecasts can be displayed on the chart. Wind, waves, currents, pressure and sea surface temp (SST) data is available anytime via Email.



**NEW!**  
**VERSION 12.5**

Includes **FREE**  
NOAA high quality  
raster charts for  
entire U.S.



#### Utilizes the following cartography:

- C-Map NT+
- C-Map NT MAX
- C-Map CM93
- Maptech/BSB charts
- Mapmedia Bathy Data (3D)

Includes FREE NOAA Charts of U.S.

### **Different boats. Different captains. One suite package.**

Are you planning a leisurely sailing trip and want to avoid winds in excess of 20 knots? With MaxSea, all you have to do is select the maximum wind force you want to sail in and the routing module will calculate a route that will avoid winds greater than what was specified. Or create pre-selected zones to avoid certain dangers, such as shallow water or danger zones, to create a much safer route.

All versions of MaxSea come with FREE, unlimited weather forecasts and oceanic data access — world wide — 24 hours a day. Visit your local Furuno dealer for a demonstration on how MaxSea navigational software allows you to easily plan your trip, even before you leave the safety of your dock.

RADAR FISH FINDERS SONAR NAVIGATION COMMUNICATION AUTOPILOTS SOFTWARE

**MaxSea-NavNet also available for connecting to any Furuno NavNet system.**

[www.Furuno.com](http://www.Furuno.com)

**FURUNO**  
The most trusted name in marine electronics!