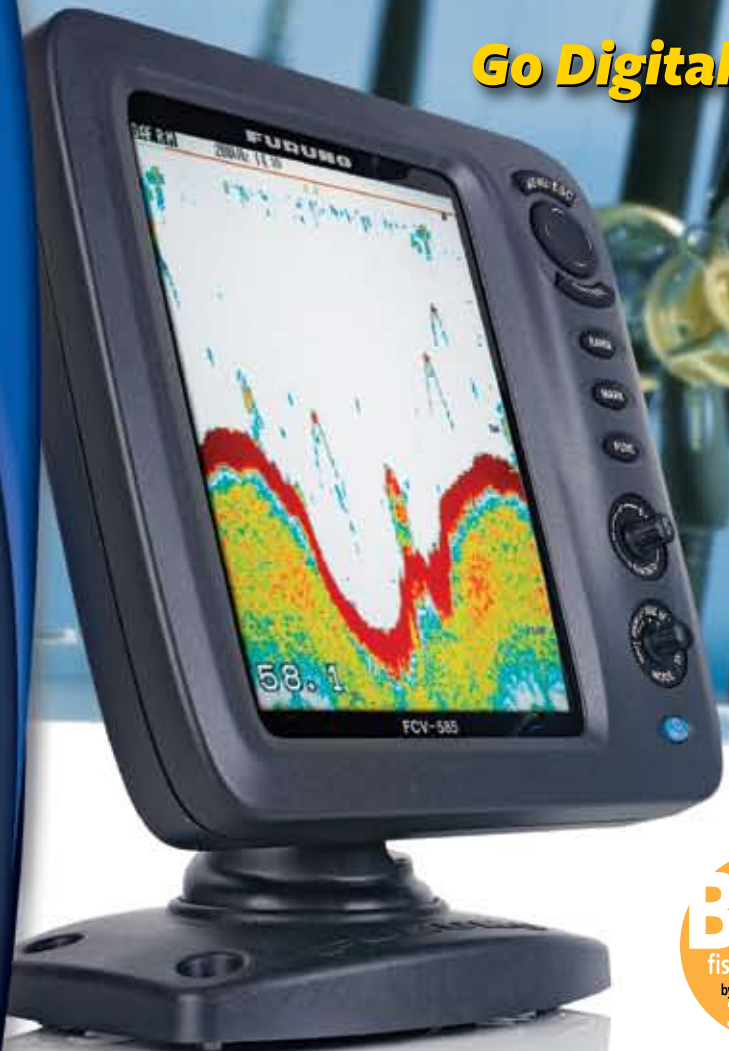
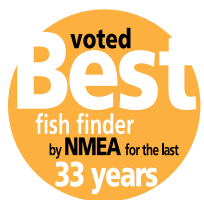


After 33 years of awards, how can our Fishfinders get any better?

Go Digital with Furuno and find out!



NEW! FCV585 - 1kW OR 600W
DUAL-FREQUENCY 50/200 kHz
8.4" SUNLIGHT VIEWABLE LCD



NEW! FCV620 - 600W
DUAL-FREQUENCY 50/200 kHz
5.6" SUNLIGHT VIEWABLE LCD

CATCH EVEN MORE FISH WITH OUR NEW DSP TECHNOLOGY!

You've probably heard about digital fish finders, but aren't quite sure what the difference is. The main difference is the filtering capabilities and auto adjustments. Our new DSP (Digital Signal Processing) technology adjusts the picture by filtering out items that you don't need to see, while enhancing the fish targets! But even the best digital filter won't help unless you start with a solid base, such as Furuno's renowned fish finder technology. Anyone who knows fishing will tell you that if you want the best fish finder, you need to go with Furuno. You'll wonder how you ever managed without it!

MAIN CONTROLS

Opens menus, escapes current operation, moves cursor and saves settings.

RANGE KEY

Opens display range setting window.

MARK KEY

Records the position of an echo as a waypoint on a plotter.

FUNCTION KEY

Opens a user defined function window.

GAIN CONTROL KNOB

Easy-grip knob allows user to change gain when in manual mode. Auto Cruising and Auto Fishing Gain Modes available.

MODE CONTROL KNOB

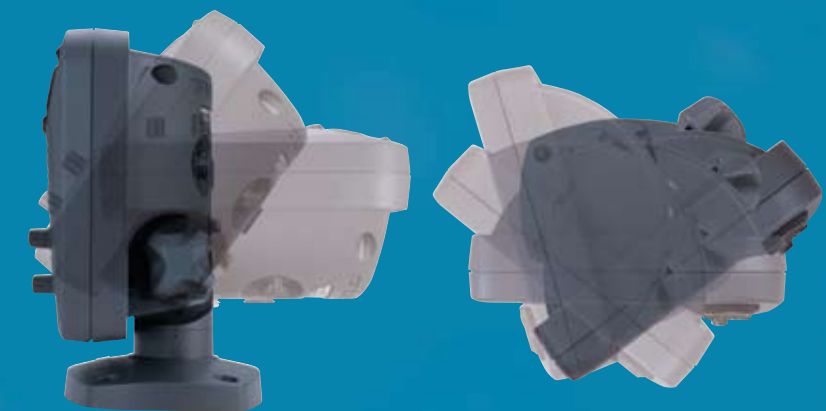
Easy-grip knob allows user to change modes from Navdata, Zoom, Low Frequency, Dual Frequency and High Frequency.



FCV585 & FCV620 FEATURES INCLUDE:

- Dual-Frequency 50/200 kHz
- 8/16/64 Color Echo Presentations
- Hands free adjustments of gain, clutter & output power through digital filtering
- Selectable Auto Fishing or Cruising Modes
- Customized NAV data display*
- 8 Range Scales to 2,500 feet
- New DSP Filter makes the picture clearer and easier to discriminate between baitfish and larger target species
- High output power of 600W on FCV620; 1kW or 600W on FCV585
- Audio and visual alarms for water depth, fish echoes and water temperature*
- Wide variety of transducer options

*appropriate sensors required



The gimbal mount allows the display to swivel around when desktop mounted. You can adjust the angle of the display so that the optimum viewing angle can be easily achieved. When flush mounting, all that is needed is a 5" hole-saw to make the cut-out for installation.

RADAR

FISH FINDERS

SONAR

NAVIGATION

COMMUNICATION

AUTOPILOTS

HUGE REBATE SAVINGS!!!

We are offering big savings on a variety of Furuno equipment. See your dealer or visit us at www.Furuno.com for details.

www.Furuno.com

FURUNO

The most trusted name in marine electronics!