

The Complete Weather Solution Only From Furuno!



COMING SOON!

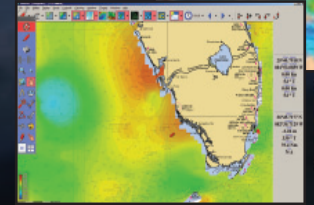
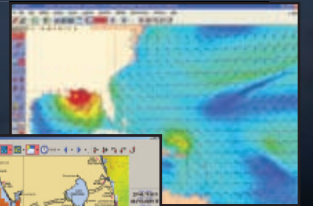


Sirius Weather Features

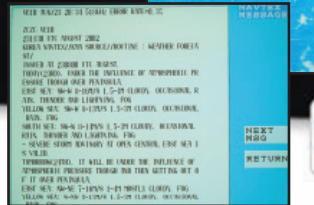
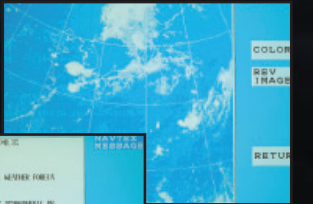
- Up-to-the-minute weather forecasting at sea
- Satellite Sea Surface Temps
- Animated NOWRad® weather radar forecasts
- Pressure isobars and frontal boundaries
- Squall lines & surface pressure
- Wind forecasts using wind barbs or arrows
- Marine text forecasts
- Lightning strike reports & storm tracking
- Buoy reports
- Wave height forecasts
- Available for C-Map versions of NavNet vx2 7", 10.4" and Black Box systems

Note: Features may change with final release

MaxSea-NavNet software allows you to download regional and worldwide weather data for FREE, showing wind, waves, currents, pressure, sea surface temperature and chlorophyll as shown on the picture below. This is perfect for coastal or offshore travel.



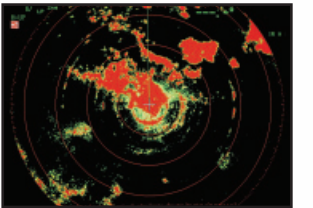
NavNet's FAX30 Weather Fax is an excellent tool for anyone heading offshore who needs high quality, high resolution weather updates and satellite images. For added convenience, it also receives and stores up to 130 NAVTEX messages.



Furuno is proud to announce that we are teaming up with Sirius to bring live, up-to-date weather forecast information to NavNet vx2 systems. The weather information is obtained from the weather industry's leading experts and is delivered via the Furuno BBWX1 digital receiver through Sirius' Marine Weather services. Now you will have the ability to receive high-quality and comprehensive weather forecast information directly overlaid onto your C-Map Max charts.

Unlike other manufacturers, Furuno has taken weather information to the next level, so that you can have a **Complete Weather Solution** on your NavNet vx2! Sirius Marine Weather is excellent for inland and coastal applications, but for anyone who travels offshore and worldwide, Furuno offers the FAX30 Weather Fax. It plugs directly into NavNet vx2 to display satellite photos and NAVTEX messages on the screen. Furuno's MaxSea-NavNet package allows you to download FREE worldwide weather & oceanic data, including chlorophyll data. Finally, add on the new PB100 weather station with a RD30 display and you can now show the current weather at your exact location.

NavNet vx2 delivers a 1-2 punch for detecting weather. Start with overlaying Sirius weather on a C-Map MAX chart as shown to the left. Then switch to NavNet's TRUE color Radar that shows the strength of storm cells with different color levels.



RD30 with PB100 Weather Sensor



Combine Furuno's popular RD30 Nav Data Repeater with the PB100 Weather Station, and display current weather information in a large, easy-to-read format. Display apparent & true wind speed/direction, barometric pressure, air temperature, relative humidity, GPS Lat/Lon, and Compass heading.

RADAR

FISH FINDERS

SONAR

NAVIGATION

COMMUNICATION

AUTOPILOTS

SOFTWARE