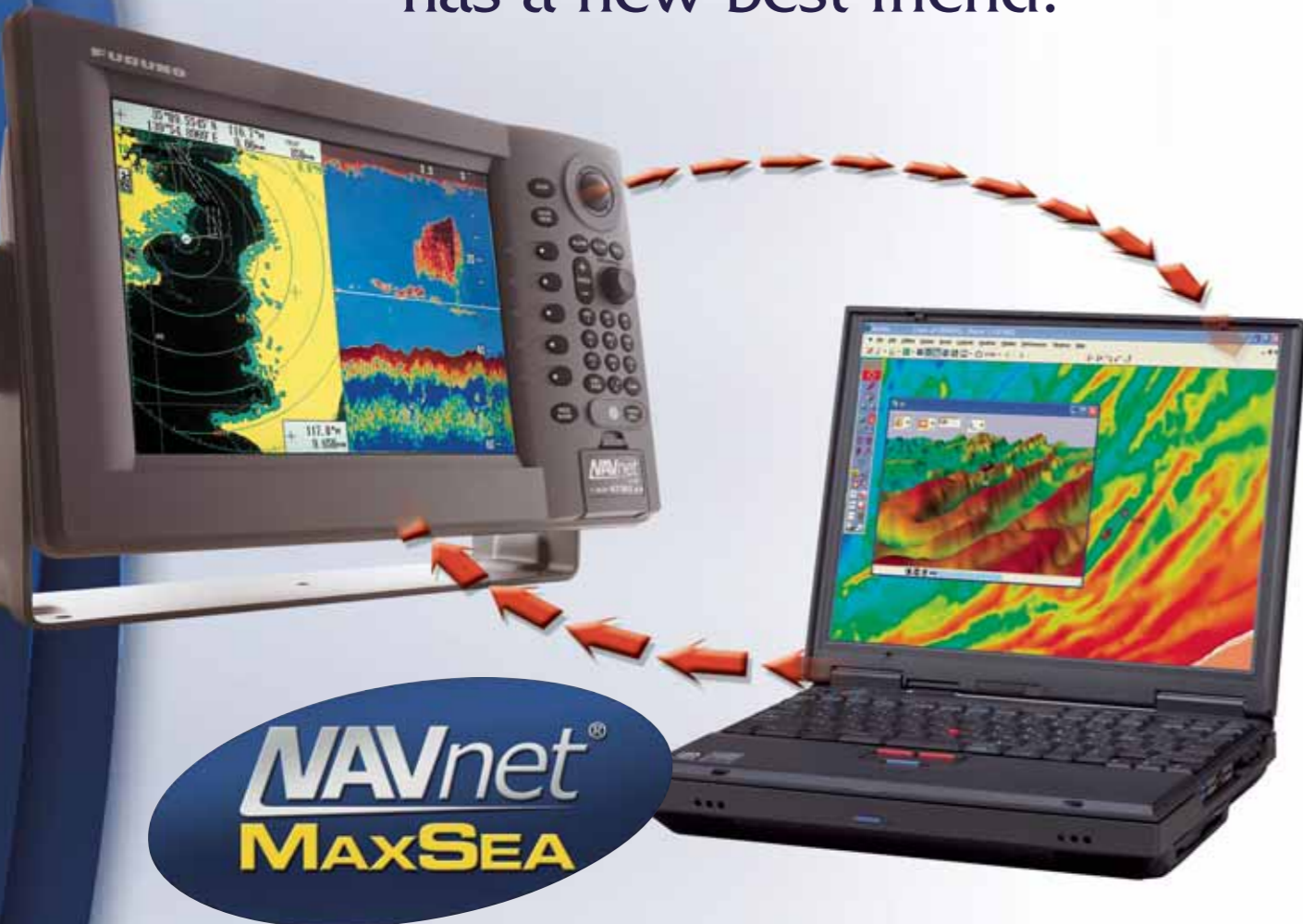


The best kept secret in marine software has a new best friend.

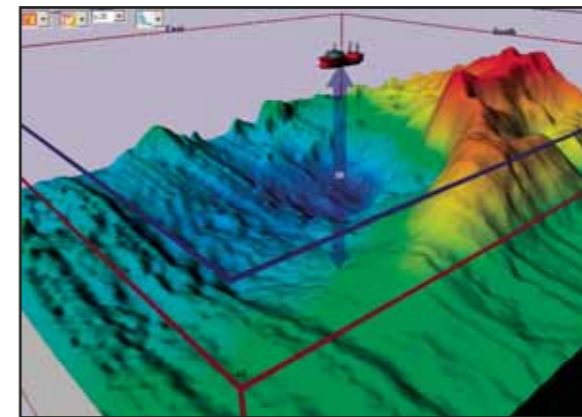


Introducing MaxSea-NavNet Marine Software

The most powerful marine software can now interface directly with your NavNet system, creating a breakthrough in marine navigation. Whether you use it for racing sailboats, cruising, sport fishing, workboats or commercial fishing, this package can be customized to meet and exceed your needs.

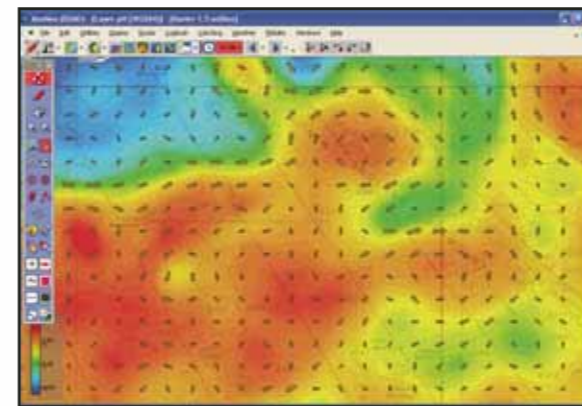
Out of the box, you will be able to navigate more efficiently with its seamless chart displays that utilize either raster or vector cartography, overlay weather forecast and ocean data, record events, display world wide tidal data and much more. When you need additional features, you simply add on modules such as real-time three dimensional images of the seabed, ARPA Radar target tracking, AIS target tracking and the list keeps going. Once connected to the NavNet network, you can also overlay Radar targets onto the charts, receive fish finder data and other navigation information.

For more detailed information on MaxSea-NavNet, visit your local Furuno dealer or visit our web site at Furuno.com.



PBG (Personal Bathymetric Generator)

The PBG module, when used in conjunction with the 2D/3D module, records the position and the depth as the boat proceeds along its course to create real-time 2D and 3D charts with pinpoint accuracy. With PBG, the bathymetric display is further enhanced when your fish finder is interfaced. You will now see you favorite fishing spots from a whole new perspective, as well as chart dangerous reefs and wrecks.



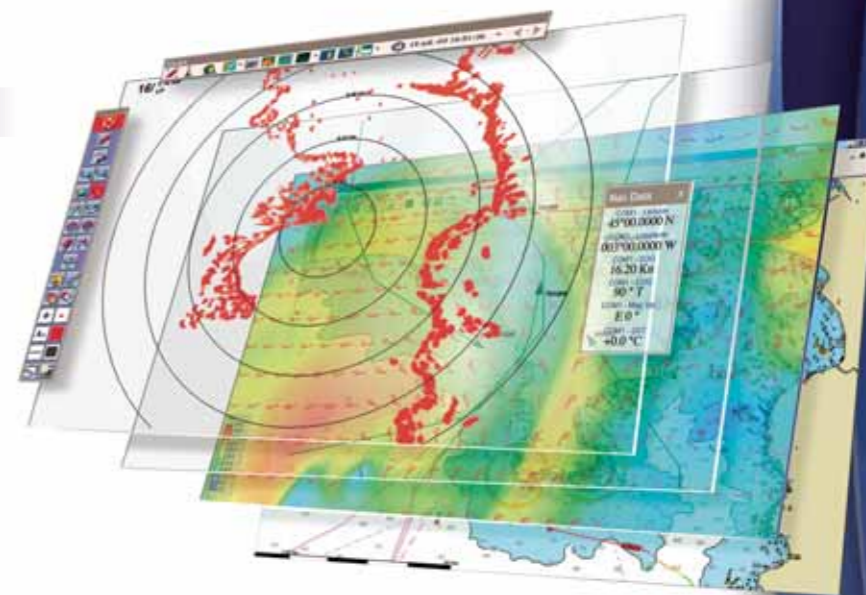
FREE Weather Forecasts

You read that right! Free ocean and weather information forecasts can be graphically displayed on the charts, making it a valuable aid for economic and timely routing and navigation planning.

Data such as wind, waves, currents, 500 mb pressure analysis, altimetry and water temperature for the entire world is available at any time via compressed Emails. Combine this information with the PBG (Personal Bathymetric Generator) and you will have the ultimate fishing and navigation tool!

Unique Overlay System

Using the multiple overlay system, various layers of information can be superimposed on your computer screen. Each overlay can contain different types of data, such as tracks, marks, hazards, wrecks, ports, currents, water temperature, etc. Based on the needs of the moment, a single click can make each layer visible or invisible, eliminating irrelevant information and clearly showing only what you want to see.



MaxSea-NavNet is capable of combining and analyzing data from multiple sources in real-time. Fully integrated into the NavNet system through a high-speed Ethernet network, MaxSea-NavNet facilitates the complete integration between the PC and the NavNet Network! Stand-alone MaxSea packages also available.



RADAR

FISH FINDERS

SONAR

NAVIGATION

COMMUNICATION

AUTOPILOTS

Get your Furuno apparel and product info at www.Furuno.com

FURUNO
The most trusted name in marine electronics!