

DATA : 1953C NAVNET

RADAR POWER: 12 KW

ANTENNA: 4' OR 6' OPEN ARRAY

RANGE: 1/8 TO 72 N.M.

FULL FEATURED CHART PLOTTER

SUNLIGHT VIEWABLE COLOR LCD

VIDEO INPUT/OUTPUT OPTION

CHART WITH RADAR OVERLAY



HI TECH AND HIGH POWER

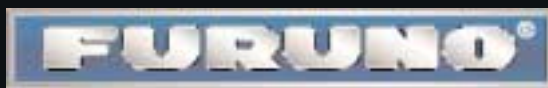
When it comes to desirable features, user interface and screen definition, the Furuno 1953C is the cream of the crop. This rugged, waterproof unit offers professional features that meet the needs of serious mariners.

This Radar/Chart Plotter has a sunlight viewable 10.4" color LCD display and is engineered around a powerful X-Band transmitter that cuts through all types of weather. In fact, because this is a TRUE color Radar that shows 6 levels of target density, you can use this Radar to track storms. The Chart Plotter is a full function plotter with a variety of display modes to view. You can even overlay Radar targets onto a chart. Choose between two units that accept either Furuno and Navionics or C-MapNT mini chart cards.

The 1953C is part of the NavNet family. The entire NavNet line includes a variety of display sizes and output power. Select from displays in 7", 10" or 10.4" and power output from 2.2kW all the way to the new 12kW. Use them as stand-alone systems or as part of an Ethernet network with multiple displays.

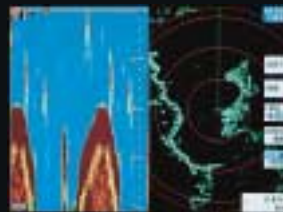
Each unit comes standard with an infrared remote control. Other options available include video input and output, 600W/1kW Network Sounder and GPS receiver. Put Furuno's hi tech, reliable power to work for you today.

www.Furuno.com



Everything else is a compromise!

10.4" COLOR LCD RADAR



There are more than 50 different display modes to choose from when all of the components are connected to NavNet.



Using the optional #008-523-070 video interface kit, you can show external video on the 1953C in full screen or picture in picture.