

We're There For The Long Haul.



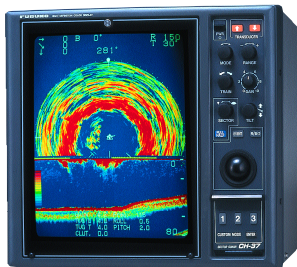
Nina Fisheries trawler **DONALILLIANA**

You're There For The Big Haul!

For more than 50 years, Furuno has helped commercial fisherman find more fish than any other brand. That's why more of today's commercial fisherman rely on Furuno. From compact LCD fish finders to leading-edge sonar technology, Furuno can meet the demand of any fisherman.

Furuno utilizes the ultimate in advanced transducer technology. This results in highly detailed images of canyon walls, high spots, bottom habitat, bait schools and even carpet fish. Plus, Furuno has recently introduced their Phased Array Transducer Technology on the new CH-37 Sonar, which utilizes multiple transducers providing you with the ultimate in speed, precision and definition. Furuno's Phased Array Technology gives the CH-37 the fastest scan rate of any other searchlight scanning sonar on the market. On the 1,500 foot range, it scans a full 360° in an amazing 8.6 seconds. And when you combine this technology with the standard true electronic stabilizer, even in the roughest seas, well, it becomes the ultimate sonar.

The CH-37's high resolution, color 15" display shows vivid and clear underwater images in Full-circle, Searchlight Vertical fan or 3D Bottom Profile Graphics. Whether you're fishing on a trawler, a seiner or any other type of vessel, the CH-37 is the clear choice in leading edge sonar technology! Available in either 60, 113 or 162 kHz.



Demand the Best!™



www.Furuno.com

FURUNO USA, INC. • 4400 NW PACIFIC RIM BLVD. • CAMAS, WA 98607-9408 • PHONE: 360-834-9300 • FAX: 360-834-9400

Furuno's
CH-37
sonar is
a true
workhorse.



"The ability to use a sonar in rough sea conditions is critical. We must have equipment that can handle what the Bering Sea throws at us. Furuno's CH-37 has proven it has what it takes. Fish detection, dual mode capabilities (forward looking and vertical profile), faster useable scan speeds and being *highly stabilized* are what really sold me. Now I can catch fish that I might have missed before!"

Capt. Bob Desautel

Nina Fisheries trawler **DONA LILLIANA**
Operating the CH-37 at 113 kHz.

