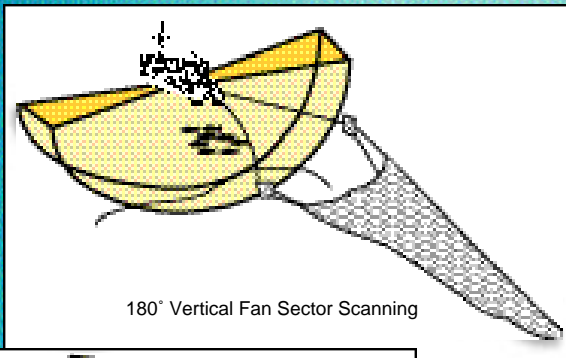
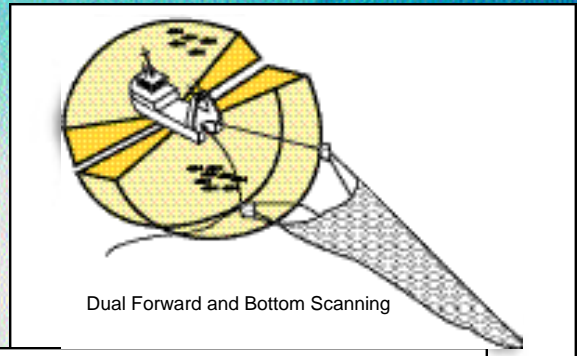


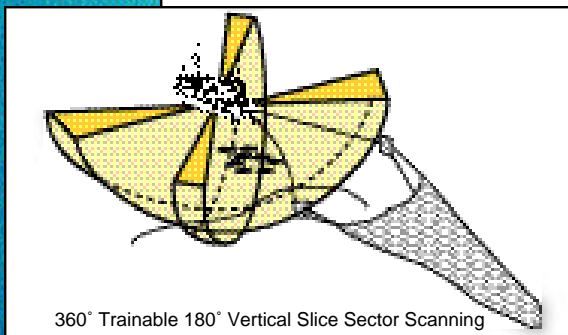
How do you like your fish, sliced or diced?



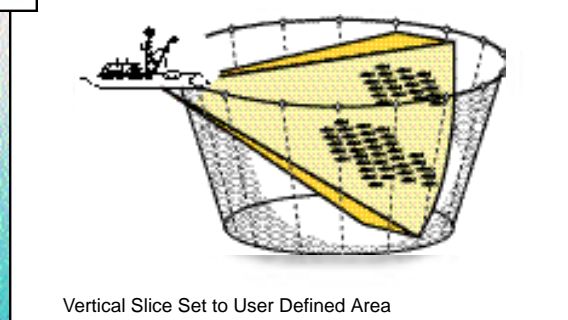
180° Vertical Fan Sector Scanning



Dual Forward and Bottom Scanning



360° Trainable 180° Vertical Slice Sector Scanning



Vertical Slice Set to User Defined Area

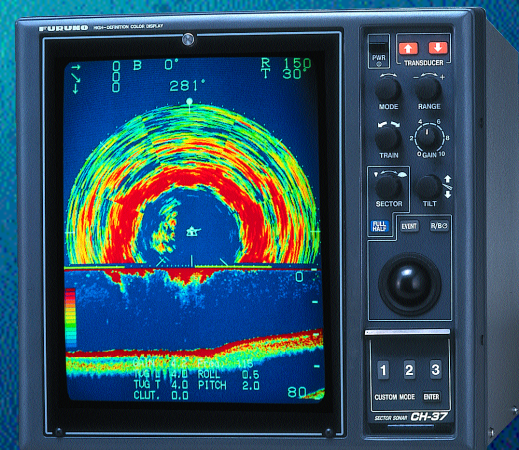
It's in the bag!

Introducing Furuno's Phased Array Transducer Technology.

Imagine a sonar so versatile it combines the detection capability of a searchlight sonar with the speed of an Omni all for the same low cost of an ordinary searchlight sonar! You just thought of Furuno's CH-37, the *world's only* Phased Array Sector Scan Sonar. It lets you choose from forward, vertical, searchlight or even a dual forward and bottom profile mode.

The CH-37 incorporates Furuno's Phased Array technology, which utilizes multiple transducers providing you with the ultimate in speed, precision and definition. Furuno's Phased Array Technology gives the CH37 the fastest scan rate of any other searchlight scanning sonar on the market. On the 1,500 foot range, it scans a full 360° in an amazing 8.6 seconds Which means you have time to change course, and that's money in the net! And when you combine this technology with the standard true electronic stabilizer, even in the roughest seas, well, it becomes the ultimate sonar.

The CH-37's high resolution, color 15" display shows vivid and clear underwater images in Full-circle, Searchlight Vertical fan or 3D Bottom Profile Graphics. Whether you're fishing on a trawler, a seiner or any other type of vessel, the CH-37 is the clear choice in leading edge sonar technology! Available in either 60, 113 or 162 kHz.



Demand the Best!™



www.Furuno.com

FURUNO USA, INC. • 4400 NW PACIFIC RIM BLVD. • CAMAS, WA 98607-9408 • PHONE: 360-834-9400 • FAX: 360-834-9400