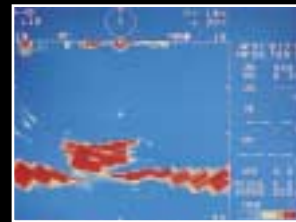


The Next Generation of Sonar Technology



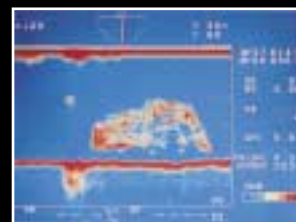
Vertical Slice Mode

A vertical view forward and aft, surface to surface, showing an expanded vertical slice of fish school distribution on the selected bearing.



Full Circle/Vertical Slice Mode

Find fish targets and bottom structure all around the vessel, while displaying a vertical distribution slice simultaneously on the same screen.



Depth Sounder Mode

Stabilized against vessel motion, the depth sounder mode has tilt and train capability for forward or side looking advantage.



Full Circle & Video Plotter

The full circle sonar plus video plotter mode shows a full sonar image and references your vessels position and events to help keep you "on target".



Introducing the new Furuno CH-250 Searchlight Sonar. It has 1,200 Watts (9,600 P-P) of transmitter power in either 60, 88 or 150 kHz operating frequencies. The CH-250 utilizes true electronic stabilization for rock steady operation in severe weather conditions. You can specify whether you want it in a "Black Box" configuration and supply your own monitor or in the standard waterproof 10.4" color TFT LCD display. When it comes to scanning, you have your choice of 8 display modes, with easy to understand graphics showing tilt angle and depth. When it comes to finding fish, there's nothing better. Call your local Furuno dealer today for more information on this new generation of sonars.

